

Converting Colors

Hex(E6CCCF)

Have a look what the booklet for
Hex(E6CCCF) contains.

Hex(E6CCCF)	3
<i>Conversions</i>	4
<i>Details</i>	6
<i>Harmonies</i>	11
<i>Previews</i>	23
<i>Color Blindness Simulation</i>	26
<i>CSS Examples</i>	29

Color

Hex(E6CCCF)

Conversions

Conversions Part 1

Format	Color
Hex	E6CCCF
RGB	230, 204, 207
RGB Percent	90%, 80%, 81%
CMY	0.0980, 0.2000, 0.1882
CMYK	0.00, 0.11, 0.10, 0.10
HSL	353°, 34%, 85%
HSV	353°, 11%, 90%
XYZ	65.4885, 64.5137, 68.0323
YIQ	212.1160, 14.5330, 6.4450

Conversions

Conversions Part 2

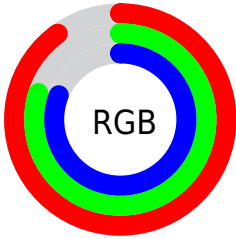
Format	Color
R _Y B	230, 204, 207
Decimal	15125711
CIE Lab	84.23, 9.58, 1.83
CIE LCh	84, 9.754, 10.835
Yxy	64.5137, 0.3307, 0.3258
Android (android.graphics.Color)	4293315791 (0xFFE6CCCF)
YUV	212.1160, -2.5222, 15.6843
Hunter-Lab	80.3204, 4.9775, 6.0050

Details

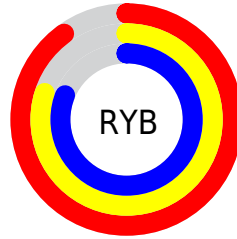
The Hex color **E6CCCF** is a light color, and the websafe version is hex **CCCCCC**. A complement of this color would be **CCE6E3**, and the grayscale version is **D4D4D4**.

A 20% lighter version of the original color is **FFFFFF**, and **AE9699** is the 20% darker color. If you saturate the color by 10%, you get **E6B5BB**, and if you desaturate by 10%, it is **E6E3E3**.

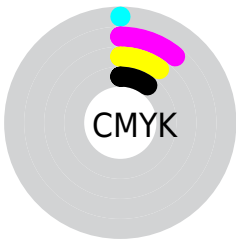
Distribution



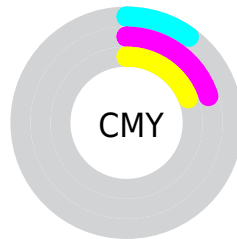
- Red (90%)
- Green (80%)
- Blue (81%)



- Red (90%)
- Yellow (80%)
- Blue (81%)



- Cyan (0%)
- Magenta (11%)
- Yellow (10%)
- Black (10%)



- Cyan (10%)
- Magenta (20%)
- Yellow (19%)

Brightness & Saturation Gradients

These gradients show how the Hex color E6CCCF changes by changing the brightness by 10 percent. The first figure shows a shift by +10% for each color and the second figure -10%.

Similar to the brightness gradients but the following saturation gradients show a change of the Hex color E6CCCF by changing the saturation by 10% instead.

 E6CCCF

 E6CCCF

FFFFFF

 CAB1B3

 AE9699

 947C7F

 7A6366

 614B4E

 493437

 321F22

 1E080B

 000000

 E6CCCF

 E6CCCF

 E6B5BB

 E6E3E3

 E69EA6

 E6FAF8

 E68792

 E6FFFF

 E6707E

 E65969

 E64255

 E62B41

 E6142C

 E6001B

Harmonies

Analogous

The Analogous color harmony consists of three colors that are next to each other on the color wheel.



E1CDD8



E6CCCF



E5CDC6

Triad

The Triadic color harmony groups three colors that are evenly spaced from another and form a triangle on the color wheel.



E6CCCF



CCD5C4



C2D5E3

Complementary

The Complementary color scheme is a pair of colors which are on the opposite of each other on the color wheel.



E6CCCF



CCE6E3

Split Complementary

Split-complementary colors differ from the complementary color scheme. The scheme consists of three colors, the original color and two neighbors of the complement color.



BCD7DE



E6CCCF



C2D7CC

Square

The Square scheme is like the rectangle color scheme, but the four colors are evenly spaced on the color wheel.



E6CCCF



D6D3C0



BCD8D5



CDD2E4

Rectangle

The Rectangle color scheme consists of four colors that form a rectangle on the color wheel.



E6CCCF



E2CFC2



BCD8D5



C0D6E2

Sweetspot

The Sweet Spot groups the original color and five complimentary colors.



E6CCCF



FFF7F8



E3CCE6



807A7B



000000



808080

Same Dimension

The Same Dimension uses a secret algorithm to generate beautiful new colors.



E6CCCF



FFDBDF



E6D6CC



736769



B30015



330006

Inverse Universe

The Inverse Universe completely reimagines the original color for something new.



E6CCCF



FFDBDF



CCDCE6



736769



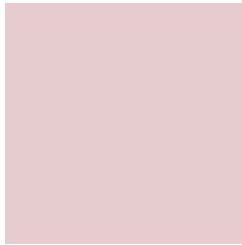
B30015



330006

Previews

White Background



This preview shows how the Hex color E6CCCF looks on a white background.

Color Contrast Check

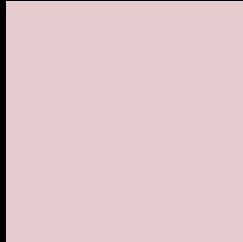
Large Text (above 18pt) WCAG AA × Fail

Any Text WCAG AA × Fail

Large Text (above 18pt) WCAG AAA × Fail

Any Text WCAG AAA × Fail

Black Background



This preview shows how the Hex color E6CCCF looks on a black background.

Color Contrast Check

Large Text (above 18pt) WCAG AA ✓ Pass

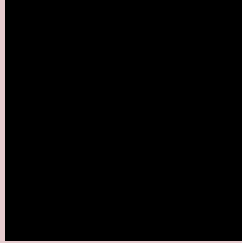
Any Text WCAG AA ✓ Pass

Large Text (above 18pt) WCAG AAA ✓ Pass

Any Text WCAG AAA ✓ Pass

If you want to check with other color combinations, try the [Color Contrast Checker](#).

Hex E6CCCF Background



This preview shows how black text looks on a background with the Hex color E6CCCF.

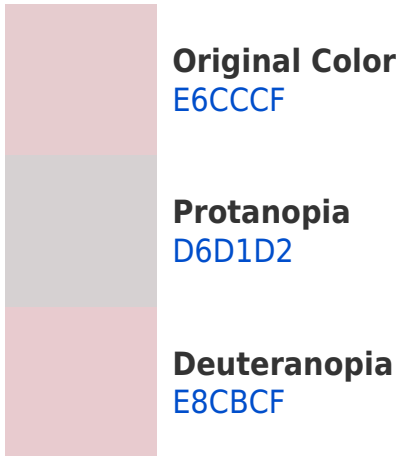


This preview shows how white text looks on a background with the Hex color E6CCCF.

Color Blindness Simulation

Color vision deficiency is a very complex topic, and I could not describe the different causes any better than Wikipedia does, so if you want to learn more, you should check out their [article about color blindness](#).

Dichromacy



Trichromacy



Original Color
E6CCCF

Protanomaly
DCCFD1

Deuteranomaly
E7CBCF

Tritanomaly
E7CBD6

Monochromacy



Original Color
E6CCCF

Achromatopsia
D4D4D4

Achromatomaly
DBD1D2

CSS Examples

Text

The CSS property to change the color of the text to Hex E6CCCF is called "color". The color property can be set on classes, ids or directly on the HTML element.

This example shows how text in the color #E6CCCF looks like.

```
.text, #text, p{  
    color:#E6CCCF  
}
```

If you want to add a text shadow in that color use the text-shadow property, you can generate a text shadow directly with our [CSS Text Shadow Generator](#).

Here you see how black text with a 4 pixel #E6CCCF colored shadow looks like.

```
.shadow{ text-shadow: 4px 4px 2px #E6CCCF
}
```

Border

The CSS property to change the border of an element to Hex E6CCCF is called "border". The border property can be set on classes, ids or directly on the HTML element.

This example shows the color as border, it can be applied via the CSS property "border" or "border-color".

```
.border, #border, table{ border:4px solid
#E6CCCF }
```

If only the border color should be changed use the property `border-color`.

```
.border{ border-color:#E6CCCF }
```

If you want to add a box shadow in that color use:

Here you see how a box with a 4 pixel #E6CCCF colored shadow looks like.

```
.boxshadow{ -moz-box-shadow:4px 4px 4px  
4px #E6CCCF; -webkit-box-shadow:4px 4px  
4px 4px #E6CCCF; box-shadow:4px 4px 4px  
4px #E6CCCF }
```

Background

The CSS property to change the background color of an element to Hex E6CCCF is called "background". The background property can be set on classes, ids or directly on the HTML element.

```
.background, #background, body{  
background:#E6CCCF }
```

If only the background color should be changed can be used:

```
.background{ background-color:#E6CCCF }
```

This example shows the color as background, it is applied via the CSS property "background".

To optimize and compress your CSS code, you can use our [online CSS compressor and optimizer](#) based on csstidy. If you want to create a linear or radial gradient as background or border, check our [CSS Gradient Generator](#).

Hey! You found this booklet interesting? Support Converting Colors with the new Membership Option!

The pro membership hides all ads, plus gives you double the colors in the color bucket, and more awesome pro features!

[Learn more, Memberships starting at \\$2.50/m!](#)

**Follow me
on Twitter!**

@ConvertingColor