

Converting Colors

Hex(E6CDC6)

Have a look what the booklet for
Hex(E6CDC6) contains.

Hex(E6CDC6)	3
<i>Conversions</i>	4
<i>Details</i>	6
<i>Harmonies</i>	11
<i>Previews</i>	23
<i>Color Blindness Simulation</i>	26
<i>CSS Examples</i>	29

Color

Hex(E6CDC6)

Conversions

Conversions Part 1

Format	Color
Hex	E6CDC6
RGB	230, 205, 198
RGB Percent	90%, 80%, 78%
CMY	0.0980, 0.1961, 0.2235
CMYK	0.00, 0.11, 0.14, 0.10
HSL	13°, 39%, 84%
HSV	13°, 14%, 90%
XYZ	64.6575, 64.5629, 62.4801
YIQ	211.6770, 17.1470, 3.1230

Conversions

Conversions Part 2

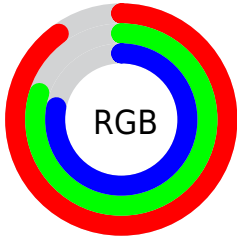
Format	Color
R _Y B	230, 207, 198
Decimal	15125958
CIE Lab	84.26, 7.59, 6.66
CIE LCh	84, 10.102, 41.255
Yxy	64.5629, 0.3373, 0.3368
Android (android.graphics.Color)	4293316038 (0xFFE6CDC6)
YUV	211.6770, -6.7428, 16.0693
Hunter-Lab	80.3510, 3.0225, 10.1424

Details

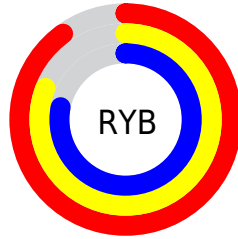
The Hex color **E6CDC6** is a light color, and the websafe version is hex **CCCCCC**. A complement of this color would be **C6DFE6**, and the grayscale version is **D4D4D4**.

A 20% lighter version of the original color is **FFFFFF**, and **AE9790** is the 20% darker color. If you saturate the color by 10%, you get **E6BBAF**, and if you desaturate by 10%, it is **E6DFDD**.

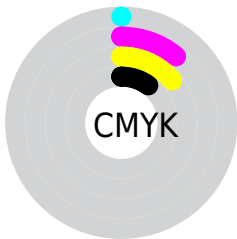
Distribution



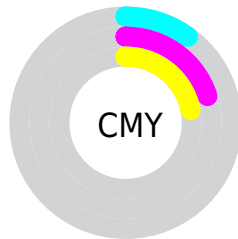
- Red (90%)
- Green (80%)
- Blue (78%)



- Red (90%)
- Yellow (81%)
- Blue (78%)



- Cyan (0%)
- Magenta (11%)
- Yellow (14%)
- Black (10%)



- Cyan (10%)
- Magenta (20%)
- Yellow (22%)

Brightness & Saturation Gradients

These gradients show how the Hex color E6CDC6 changes by changing the brightness by 10 percent. The first figure shows a shift by +10% for each color and the second figure -10%.

Similar to the brightness gradients but the following saturation gradients show a change of the Hex color E6CDC6 by changing the saturation by 10% instead.

 E6CDC6

FFFFFF

 E6CDC6

 CAB2AB


 AE9790

 937D77

 79645E

 604C46

 483530

 31201B

 1E0900

 000000

 E6CDC6

 E6CDC6

 E6BBAF

 E6DFDD

 E6A998

 E6F1F4

 E69781

 E6FFFF

 E6856A

 E67353

 E6613C

 E64F25

 E63D0E

 E63200

Harmonies

Analogous

The Analogous color harmony consists of three colors that are next to each other on the color wheel.



E7CCCF



E6CDC6



E0D0C0

Triad

The Triadic color harmony groups three colors that are evenly spaced from another and form a triangle on the color wheel.



E6CDC6



C1D7CC



CDD2E5

Complementary

The Complementary color scheme is a pair of colors which are on the opposite of each other on the color wheel.



E6CDC6



C6DFE6

Split Complementary

Split-complementary colors differ from the complementary color scheme. The scheme consists of three colors, the original color and two neighbors of the complement color.



C2D5E4



E6CDC6



BBD8D6

Square

The Square scheme is like the rectangle color scheme, but the four colors are evenly spaced on the color wheel.



E6CDC6



CBD6C4



BCD7DE



D9CFE1

Rectangle

The Rectangle color scheme consists of four colors that form a rectangle on the color wheel.



E6CDC6



DAD2BF



BCD7DE



C9D3E5

Sweetspot

The Sweet Spot groups the original color and five complimentary colors.



E6CDC6



FFF7F5



E6C6DF



807B79



000000



808080

Same Dimension

The Same Dimension uses a secret algorithm to generate beautiful new colors.



E6CDC6



FFDDD4



E6DDC6



736A67



B32700



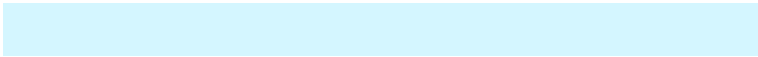
330B00

Inverse Universe

The Inverse Universe completely reimagines the original color for something new.



C6DFE6



D4F6FF



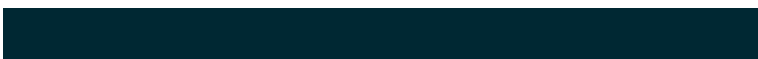
C6CFE6



677073



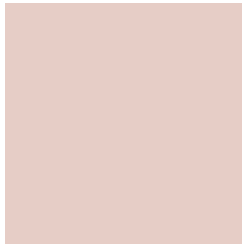
008BB3



002833

Previews

White Background



This preview shows how the Hex color E6CDC6 looks on a white background.

Color Contrast Check

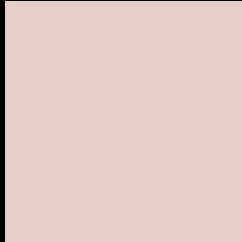
Large Text (above 18pt) WCAG AA × Fail

Any Text WCAG AA × Fail

Large Text (above 18pt) WCAG AAA × Fail

Any Text WCAG AAA × Fail

Black Background



This preview shows how the Hex color E6CDC6 looks on a black background.

Color Contrast Check

Large Text (above 18pt) WCAG AA ✓ Pass

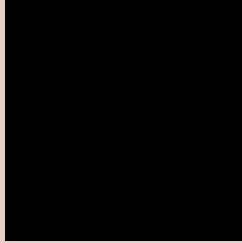
Any Text WCAG AA ✓ Pass

Large Text (above 18pt) WCAG AAA ✓ Pass

Any Text WCAG AAA ✓ Pass

If you want to check with other color combinations, try the [Color Contrast Checker](#).

Hex E6CDC6 Background



This preview shows how black text looks on a background with the Hex color E6CDC6.

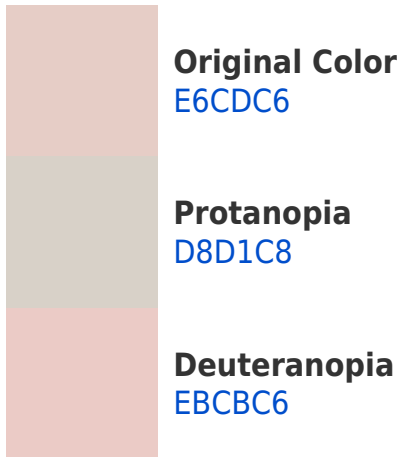


This preview shows how white text looks on a background with the Hex color E6CDC6.

Color Blindness Simulation

Color vision deficiency is a very complex topic, and I could not describe the different causes any better than Wikipedia does, so if you want to learn more, you should check out their [article about color blindness](#).

Dichromacy



Trichromacy



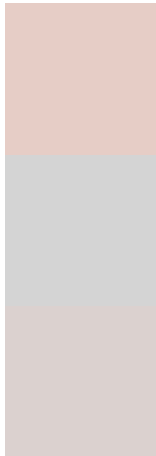
Original Color
E6CDC6

Protanomaly
DDD0C7

Deuteranomaly
E9CCC6

Tritanomaly
E8CBD3

Monochromacy



Original Color
E6CDC6

Achromatopsia
D4D4D4

Achromatomaly
DBD1CF

CSS Examples

Text

The CSS property to change the color of the text to Hex E6CDC6 is called "color". The color property can be set on classes, ids or directly on the HTML element.

This example shows how text in the color #E6CDC6 looks like.

```
.text, #text, p{  
    color:#E6CDC6  
}
```

If you want to add a text shadow in that color use the text-shadow property, you can generate a text shadow directly with our [CSS Text Shadow Generator](#).

Here you see how black text with a 4 pixel #E6CDC6 colored shadow looks like.

```
.shadow{ text-shadow: 4px 4px 2px #E6CDC6
}
```

Border

The CSS property to change the border of an element to Hex E6CDC6 is called "border". The border property can be set on classes, ids or directly on the HTML element.

This example shows the color as border, it can be applied via the CSS property "border" or "border-color".

```
.border, #border, table{ border:4px solid
#E6CDC6 }
```

If only the border color should be changed use the property `border-color`.

```
.border{ border-color:#E6CDC6 }
```

If you want to add a box shadow in that color use:

Here you see how a box with a 4 pixel #E6CDC6 colored shadow looks like.

```
.boxshadow{ -moz-box-shadow:4px 4px 4px  
4px #E6CDC6; -webkit-box-shadow:4px 4px  
4px 4px #E6CDC6; box-shadow:4px 4px 4px  
4px #E6CDC6 }
```

Background

The CSS property to change the background color of an element to Hex E6CDC6 is called "background". The background property can be set on classes, ids or directly on the HTML element.

```
.background, #background, body{  
background:#E6CDC6 }
```

If only the background color should be changed can be used:

```
.background{ background-color:#E6CDC6 }
```

This example shows the color as background, it is applied via the CSS property "background".

To optimize and compress your CSS code, you can use our [online CSS compressor and optimizer](#) based on csstidy. If you want to create a linear or radial gradient as background or border, check our [CSS Gradient Generator](#).

Hey! You found this booklet interesting? Support Converting Colors with the new Membership Option!

The pro membership hides all ads, plus gives you double the colors in the color bucket, and more awesome pro features!

[Learn more, Memberships starting at \\$2.50/m!](#)

**Follow me
on Twitter!**

@ConvertingColor