

Converting Colors

Hex(E6CDD7)

Have a look what the booklet for
Hex(E6CDD7) contains.

Hex(E6CDD7)	3
<i>Conversions</i>	4
<i>Details</i>	6
<i>Harmonies</i>	11
<i>Previews</i>	23
<i>Color Blindness Simulation</i>	26
<i>CSS Examples</i>	29

Color

Hex(E6CDD7)

Conversions

Conversions Part 1

Format	Color
Hex	E6CDD7
RGB	230, 205, 215
RGB Percent	90%, 80%, 84%
CMY	0.0980, 0.1961, 0.1569
CMYK	0.00, 0.11, 0.07, 0.10
HSL	336°, 33%, 85%
HSV	336°, 11%, 90%
XYZ	66.7302, 65.3919, 73.3948
YIQ	213.6150, 11.6900, 8.4100

Conversions

Conversions Part 2

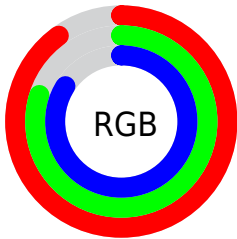
Format	Color
R _Y B	230, 205, 215
Decimal	15125975
CIE Lab	84.69, 10.40, -1.77
CIE LCh	85, 10.551, 350.369
Yxy	65.3919, 0.3247, 0.3182
Android (android.graphics.Color)	4293316055 (0xFFE6CDD7)
YUV	213.6150, 0.6828, 14.3696
Hunter-Lab	80.8653, 5.7843, 2.7930

Details

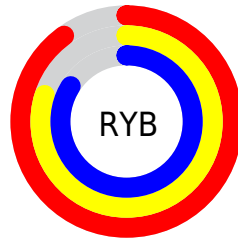
The Hex color **E6CDD7** is a light color, and the websafe version is hex **CCCCCC**. A complement of this color would be **CDE6DC**, and the grayscale version is **D6D6D6**.

A 20% lighter version of the original color is **FFFFFF**, and **AE97A0** is the 20% darker color. If you saturate the color by 10%, you get **E6B6C9**, and if you desaturate by 10%, it is **E6E4E5**.

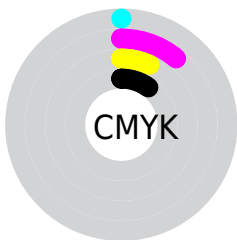
Distribution



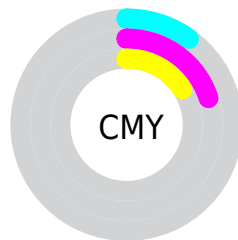
- Red (90%)
- Green (80%)
- Blue (84%)



- Red (90%)
- Yellow (80%)
- Blue (84%)



- Cyan (0%)
- Magenta (11%)
- Yellow (7%)
- Black (10%)



- Cyan (10%)
- Magenta (20%)
- Yellow (16%)

Brightness & Saturation Gradients

These gradients show how the Hex color E6CDD7 changes by changing the brightness by 10 percent. The first figure shows a shift by +10% for each color and the second figure -10%.

Similar to the brightness gradients but the following saturation gradients show a change of the Hex color E6CDD7 by changing the saturation by 10% instead.

 E6CDD7

 E6CDD7

FFFFFF

 CAB2BB

 AE97A0

 947D86

 7A646D

 614C55

 49353D

 322028

 1E0913

 000000

 E6CDD7

 E6CDD7

 E6B6C9

 E6E4E5

 E69FBB

 E6FBF3

 E688AE

 E6FFFF

 E671A0

 E65A92

 E64384

 E62C76

 E61569

 E6005C

Harmonies

Analogous

The Analogous color harmony consists of three colors that are next to each other on the color wheel.



DDCFE0



E6CDD7



E9CD CD

Triad

The Triadic color harmony groups three colors that are evenly spaced from another and form a triangle on the color wheel.



E6CDD7



D4D5C1



BDD8E2

Complementary

The Complementary color scheme is a pair of colors which are on the opposite of each other on the color wheel.



E6CDD7



CDE6DC

Split Complementary

Split-complementary colors differ from the complementary color scheme. The scheme consists of three colors, the original color and two neighbors of the complement color.



BBD9DA



E6CDD7



C9D8C6

Square

The Square scheme is like the rectangle color scheme, but the four colors are evenly spaced on the color wheel.



E6CDD7



DFD2C0



BFD9D0



C6D5E7

Rectangle

The Rectangle color scheme consists of four colors that form a rectangle on the color wheel.



E6CDD7



E8CEC7



BFD9D0



BCD9E0

Sweetspot

The Sweet Spot groups the original color and five complimentary colors.



E6CDD7



FFF7FA



DCCDE6



807A7C



000000



808080

Same Dimension

The Same Dimension uses a secret algorithm to generate beautiful new colors.



E6CDD7



FFDEEB



E6D0CD



73676C



B30047



330014

Inverse Universe

The Inverse Universe completely reimagines the original color for something new.



E6CDD7



FFDEEB



CDE3E6



73676C



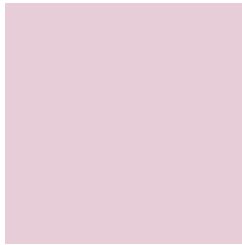
B30047



330014

Previews

White Background



This preview shows how the Hex color E6CDD7 looks on a white background.

Color Contrast Check

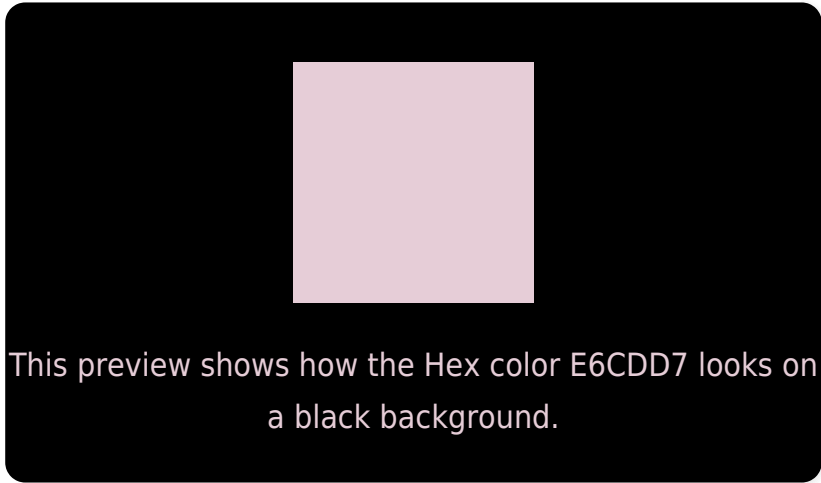
Large Text (above 18pt) WCAG AA × Fail

Any Text WCAG AA × Fail

Large Text (above 18pt) WCAG AAA × Fail

Any Text WCAG AAA × Fail

Black Background



Color Contrast Check

Large Text (above 18pt) WCAG AA ✓ Pass

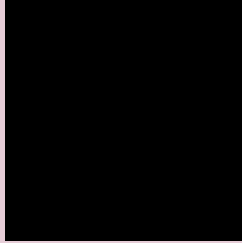
Any Text WCAG AA ✓ Pass

Large Text (above 18pt) WCAG AAA ✓ Pass

Any Text WCAG AAA ✓ Pass

If you want to check with other color combinations, try the [Color Contrast Checker](#).

Hex E6CDD7 Background



This preview shows how black text looks on a background with the Hex color E6CDD7.

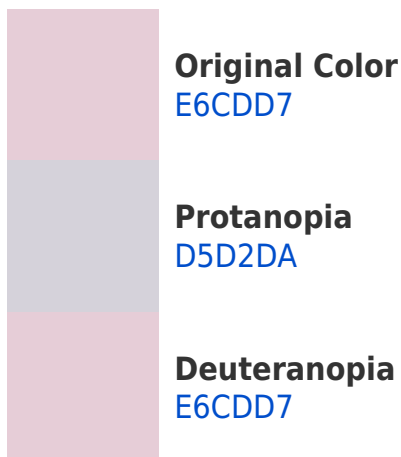


This preview shows how white text looks on a background with the Hex color E6CDD7.

Color Blindness Simulation

Color vision deficiency is a very complex topic, and I could not describe the different causes any better than Wikipedia does, so if you want to learn more, you should check out their [article about color blindness](#).

Dichromacy



Trichromacy



Original Color
E6CDD7

Protanomaly
DBD0D9

Deuteranomaly
E6CDD7

Tritanomaly
E7CCDA

Monochromacy



Original Color
E6CDD7

Achromatopsia
D6D6D6

Achromatomaly
DCD3D6

CSS Examples

Text

The CSS property to change the color of the text to Hex E6CDD7 is called "color". The color property can be set on classes, ids or directly on the HTML element.

This example shows how text in the color #E6CDD7 looks like.

```
.text, #text, p{  
    color:#E6CDD7  
}
```

If you want to add a text shadow in that color use the text-shadow property, you can generate a text shadow directly with our [CSS Text Shadow Generator](#).

Here you see how black text with a 4 pixel #E6CDD7 colored shadow looks like.

```
.shadow{ text-shadow: 4px 4px 2px #E6CDD7
}
```

Border

The CSS property to change the border of an element to Hex E6CDD7 is called "border". The border property can be set on classes, ids or directly on the HTML element.

This example shows the color as border, it can be applied via the CSS property "border" or "border-color".

```
.border, #border, table{ border:4px solid
#E6CDD7 }
```

If only the border color should be changed use the property `border-color`.

```
.border{ border-color:#E6CDD7 }
```

If you want to add a box shadow in that color use:

Here you see how a box with a 4 pixel #E6CDD7 colored shadow looks like.

```
.boxshadow{ -moz-box-shadow:4px 4px 4px  
4px #E6CDD7; -webkit-box-shadow:4px 4px  
4px 4px #E6CDD7; box-shadow:4px 4px 4px  
4px #E6CDD7 }
```

Background

The CSS property to change the background color of an element to Hex E6CDD7 is called "background". The background property can be set on classes, ids or directly on the HTML element.

```
.background, #background, body{  
background:#E6CDD7 }
```

If only the background color should be changed can be used:

```
.background{ background-color:#E6CDD7 }
```

This example shows the color as background, it is applied via the CSS property "background".

To optimize and compress your CSS code, you can use our [online CSS compressor and optimizer](#) based on csstidy. If you want to create a linear or radial gradient as background or border, check our [CSS Gradient Generator](#).

Hey! You found this booklet interesting? Support Converting Colors with the new Membership Option!

The pro membership hides all ads, plus gives you double the colors in the color bucket, and more awesome pro features!

[Learn more, Memberships starting at \\$2.50/m!](#)

**Follow me
on Twitter!**

@ConvertingColor