

Converting Colors

Hex(E6CFBD)

Have a look what the booklet for
Hex(E6CFBD) contains.

Hex(E6CFBD)	3
<i>Conversions</i>	4
<i>Details</i>	6
<i>Harmonies</i>	11
<i>Previews</i>	23
<i>Color Blindness Simulation</i>	26
<i>CSS Examples</i>	29

Color

Hex(E6CFBD)

Conversions

Conversions Part 1

Format	Color
Hex	E6CFBD
RGB	230, 207, 189
RGB Percent	90%, 81%, 74%
CMY	0.0980, 0.1882, 0.2588
CMYK	0.00, 0.10, 0.18, 0.10
HSL	26°, 45%, 82%
HSV	26°, 18%, 90%
XYZ	64.1313, 65.1228, 57.3340
YIQ	211.8250, 19.4860, -0.7220

Conversions

Conversions Part 2

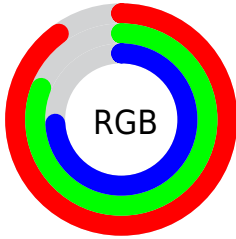
Format	Color
R _Y B	230, 221, 189
Decimal	15126461
CIE Lab	84.55, 5.15, 11.85
CIE LCh	85, 12.925, 66.507
Yxy	65.1228, 0.3437, 0.3490
Android (android.graphics.Color)	4293316541 (0xFFE6CFBD)
YUV	211.8250, -11.2527, 15.9395
Hunter-Lab	80.6987, 0.6313, 14.3653

Details

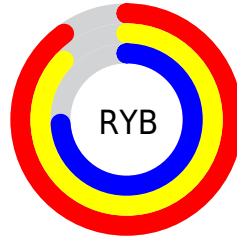
The Hex color **E6CFBD** is a light color, and the websafe version is hex **CCCCCC**. A complement of this color would be **BDD4E6**, and the grayscale version is **D4D4D4**.

A 20% lighter version of the original color is **FFFFFF5**, and **AE9988** is the 20% darker color. If you saturate the color by 10%, you get **E6C2A6**, and if you desaturate by 10%, it is **E6DCD4**.

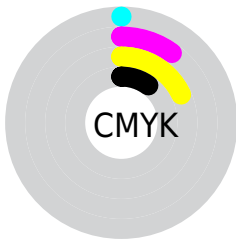
Distribution



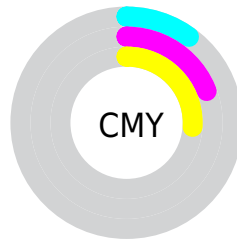
- Red (90%)
- Green (81%)
- Blue (74%)



- Red (90%)
- Yellow (87%)
- Blue (74%)



- Cyan (0%)
- Magenta (10%)
- Yellow (18%)
- Black (10%)



- Cyan (10%)
- Magenta (19%)
- Yellow (26%)

Brightness & Saturation Gradients

These gradients show how the Hex color E6CFBD changes by changing the brightness by 10 percent. The first figure shows a shift by +10% for each color and the second figure -10%.

Similar to the brightness gradients but the following saturation gradients show a change of the Hex color E6CFBD by changing the saturation by 10% instead.

 E6CFBD

 E6CFBD

FFFFFFF

 CAB3A2

 FFFFFF5

 AE9988

 937F6E

 796656

 604E3F

 483729

 312214

 1C0C00

 000000

 E6CFBD

 E6CFBD

 E6C2A6

 E6DCD4

 E6B58F

 E6E9EB

 E6A878

 E6F6FF

 E69B61

 E6FFFF

 E68E4A

 E68233

 E6751C

 E66805

 E66500

Harmonies

Analogous

The Analogous color harmony consists of three colors that are next to each other on the color wheel.



EDCCC5



E6CFBD



DAD3BB

Triad

The Triadic color harmony groups three colors that are evenly spaced from another and form a triangle on the color wheel.



E6CFBD



B6DAD5



D9CFE7

Complementary

The Complementary color scheme is a pair of colors which are on the opposite of each other on the color wheel.



E6CFBD



BDD4E6

Split Complementary

Split-complementary colors differ from the complementary color scheme. The scheme consists of three colors, the original color and two neighbors of the complement color.



C9D3EB



E6CFBD



B5D9E1

Square

The Square scheme is like the rectangle color scheme, but the four colors are evenly spaced on the color wheel.



E6CFBD



BFD9C9



BCD7E9



E6CCDD

Rectangle

The Rectangle color scheme consists of four colors that form a rectangle on the color wheel.



E6CFBD



D1D6BD



BCD7E9



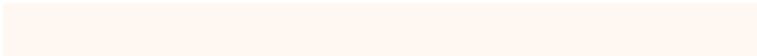
D4D0E9

Sweetspot

The Sweet Spot groups the original color and five complimentary colors.



E6CFBD



FFF8F2



E6BDD4



807B78



000000



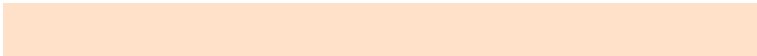
808080

Same Dimension

The Same Dimension uses a secret algorithm to generate beautiful new colors.



E6CFBD



FFE1C9



E6E3BD



736C67



B34E00



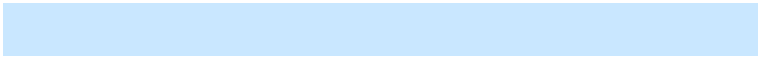
331600

Inverse Universe

The Inverse Universe completely reimagines the original color for something new.



BDD4E6



C9E7FF



BDC0E6



676E73



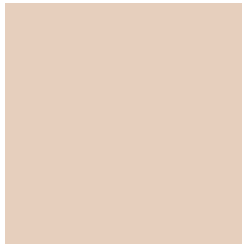
0064B3



001D33

Previews

White Background



This preview shows how the Hex color E6CFBD looks on a white background.

Color Contrast Check

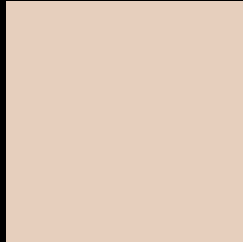
Large Text (above 18pt) WCAG AA × Fail

Any Text WCAG AA × Fail

Large Text (above 18pt) WCAG AAA × Fail

Any Text WCAG AAA × Fail

Black Background



This preview shows how the Hex color E6CFBD looks on a black background.

Color Contrast Check

Large Text (above 18pt) WCAG AA ✓ Pass

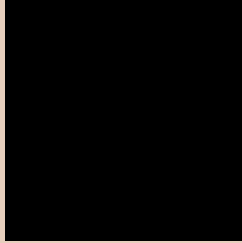
Any Text WCAG AA ✓ Pass

Large Text (above 18pt) WCAG AAA ✓ Pass

Any Text WCAG AAA ✓ Pass

If you want to check with other color combinations, try the [Color Contrast Checker](#).

Hex E6CFBD Background



This preview shows how black text looks on a background with the Hex color E6CFBD.

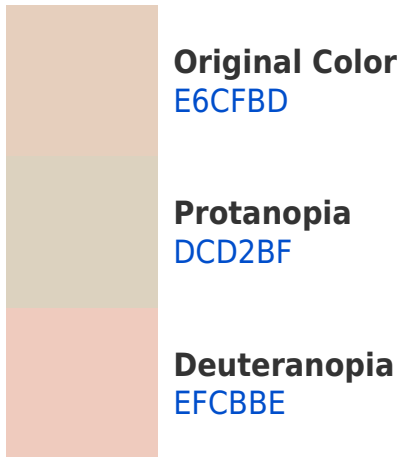


This preview shows how white text looks on a background with the Hex color E6CFBD.

Color Blindness Simulation

Color vision deficiency is a very complex topic, and I could not describe the different causes any better than Wikipedia does, so if you want to learn more, you should check out their [article about color blindness](#).

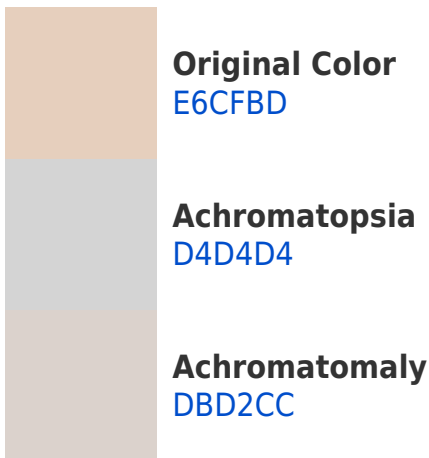
Dichromacy



Trichromacy



Monochromacy



CSS Examples

Text

The CSS property to change the color of the text to Hex E6CFBD is called "color". The color property can be set on classes, ids or directly on the HTML element.

This example shows how text in the color #E6CFBD looks like.

```
.text, #text, p{  
    color:#E6CFBD  
}
```

If you want to add a text shadow in that color use the text-shadow property, you can generate a text shadow directly with our [CSS Text Shadow Generator](#).

Here you see how black text with a 4 pixel #E6CFBD colored shadow looks like.

```
.shadow{ text-shadow: 4px 4px 2px #E6CFBD
}
```

Border

The CSS property to change the border of an element to Hex E6CFBD is called "border". The border property can be set on classes, ids or directly on the HTML element.

This example shows the color as border, it can be applied via the CSS property "border" or "border-color".

```
.border, #border, table{ border:4px solid
#E6CFBD }
```

If only the border color should be changed use the property `border-color`.

```
.border{ border-color:#E6CFBD }
```

If you want to add a box shadow in that color use:

Here you see how a box with a 4 pixel #E6CFBD colored shadow looks like.

```
.boxshadow{ -moz-box-shadow:4px 4px 4px  
4px #E6CFBD; -webkit-box-shadow:4px 4px  
4px 4px #E6CFBD; box-shadow:4px 4px 4px  
4px #E6CFBD }
```

Background

The CSS property to change the background color of an element to Hex E6CFBD is called "background". The background property can be set on classes, ids or directly on the HTML element.

```
.background, #background, body{  
background:#E6CFBD }
```

If only the background color should be changed can be used:

```
.background{ background-color:#E6CFBD }
```

This example shows the color as background, it is applied via the CSS property "background".

To optimize and compress your CSS code, you can use our [online CSS compressor and optimizer](#) based on csstidy. If you want to create a linear or radial gradient as background or border, check our [CSS Gradient Generator](#).

Hey! You found this booklet interesting? Support Converting Colors with the new Membership Option!

The pro membership hides all ads, plus gives you double the colors in the color bucket, and more awesome pro features!

[Learn more, Memberships starting at \\$2.50/m!](#)

**Follow me
on Twitter!**

@ConvertingColor