

Converting Colors

Hex(E6CFC5)

Have a look what the booklet for
Hex(E6CFC5) contains.

Hex(E6CFC5)	3
<i>Conversions</i>	4
<i>Details</i>	6
<i>Harmonies</i>	11
<i>Previews</i>	23
<i>Color Blindness Simulation</i>	26
<i>CSS Examples</i>	29

Color

Hex(E6CFC5)

Conversions

Conversions Part 1

Format	Color
Hex	E6CFC5
RGB	230, 207, 197
RGB Percent	90%, 81%, 77%
CMY	0.0980, 0.1882, 0.2275
CMYK	0.00, 0.10, 0.14, 0.10
HSL	18°, 40%, 84%
HSV	18°, 14%, 90%
XYZ	65.0240, 65.4799, 62.0351
YIQ	212.7370, 16.9180, 1.7660

Conversions

Conversions Part 2

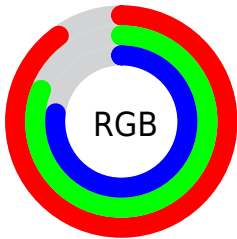
Format	Color
R _Y B	230, 211, 197
Decimal	15126469
CIE Lab	84.73, 6.39, 7.87
CIE LCh	85, 10.137, 50.942
Yxy	65.4799, 0.3377, 0.3401
Android (android.graphics.Color)	4293316549 (0xFFE6CFC5)
YUV	212.7370, -7.7583, 15.1397
Hunter-Lab	80.9196, 1.8266, 11.1905

Details

The Hex color **E6CFC5** is a light color, and the websafe version is hex **CCCCCC**. A complement of this color would be **C5DCE6**, and the grayscale version is **D5D5D5**.

A 20% lighter version of the original color is **FFFFFFE**, and **AE998F** is the 20% darker color. If you saturate the color by 10%, you get **E6BFAE**, and if you desaturate by 10%, it is **E6DFDC**.

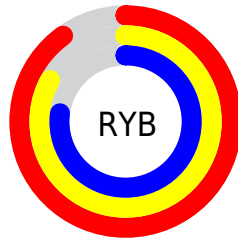
Distribution



Red (90%)

Green (81%)

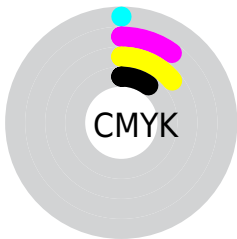
Blue (77%)



Red (90%)

Yellow (83%)

Blue (77%)

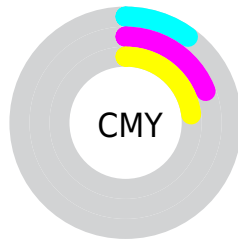


Cyan (0%)

Magenta (10%)

Yellow (14%)

Black (10%)



Cyan (10%)

Magenta (19%)

Yellow (23%)

Brightness & Saturation Gradients

These gradients show how the Hex color E6CFC5 changes by changing the brightness by 10 percent. The first figure shows a shift by +10% for each color and the second figure -10%.

Similar to the brightness gradients but the following saturation gradients show a change of the Hex color E6CFC5 by changing the saturation by 10% instead.

 E6CFC5

 E6CFC5

FFFFFF

 CAB3AA

FFFFFFE

 AE998F

 937F76

 7A665D

 604E45

 48372F

 31221A

 1E0B00

 000000

 E6CFC5

 E6CFC5

 E6BFAE

 E6DFDC

 E6AF97

 E6EFF3

 E69F80

 E6FFFF

 E68F69

 E67F52

 E66F3B

 E65F24

 E64F0D

 E64600

Harmonies

Analogous

The Analogous color harmony consists of three colors that are next to each other on the color wheel.



E9CDCD



E6CFC5



DFD2C1

Triad

The Triadic color harmony groups three colors that are evenly spaced from another and form a triangle on the color wheel.



E6CFC5



C0D9D0



D2D2E5

Complementary

The Complementary color scheme is a pair of colors which are on the opposite of each other on the color wheel.



E6CFC5



C5DCE6

Split Complementary

Split-complementary colors differ from the complementary color scheme. The scheme consists of three colors, the original color and two neighbors of the complement color.



C6D5E6



E6CFC5



BCD9DA

Square

The Square scheme is like the rectangle color scheme, but the four colors are evenly spaced on the color wheel.



E6CFC5



C9D8C7



BED8E2



DDCFE0

Rectangle

The Rectangle color scheme consists of four colors that form a rectangle on the color wheel.



E6CFC5



D8D4C1



BED8E2



CED3E6

Sweetspot

The Sweet Spot groups the original color and five complimentary colors.



E6CFC5



FFF8F5



E6C5DC



807B79



000000



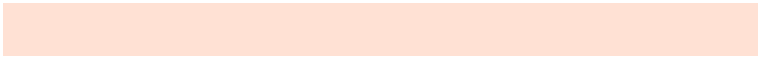
808080

Same Dimension

The Same Dimension uses a secret algorithm to generate beautiful new colors.



E6CFC5



FFE1D4



E6DFC5



736B67



B33600



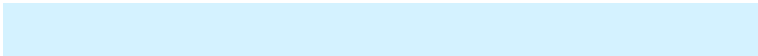
330F00

Inverse Universe

The Inverse Universe completely reimagines the original color for something new.



C5DCE6



D4F2FF



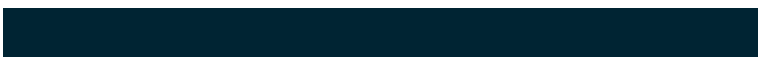
C5CCE6



676F73



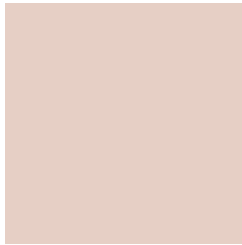
007CB3



002433

Previews

White Background



This preview shows how the Hex color E6CFC5 looks on a white background.

Color Contrast Check

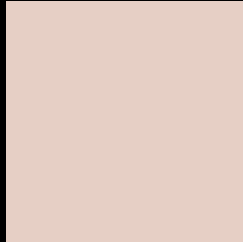
Large Text (above 18pt) WCAG AA × Fail

Any Text WCAG AA × Fail

Large Text (above 18pt) WCAG AAA × Fail

Any Text WCAG AAA × Fail

Black Background



This preview shows how the Hex color E6CFC5 looks on a black background.

Color Contrast Check

Large Text (above 18pt) WCAG AA ✓ Pass

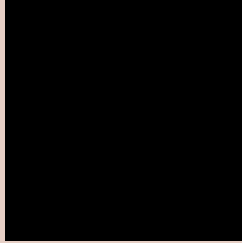
Any Text WCAG AA ✓ Pass

Large Text (above 18pt) WCAG AAA ✓ Pass

Any Text WCAG AAA ✓ Pass

If you want to check with other color combinations, try the [Color Contrast Checker](#).

Hex E6CFC5 Background



This preview shows how black text looks on a background with the Hex color E6CFC5.

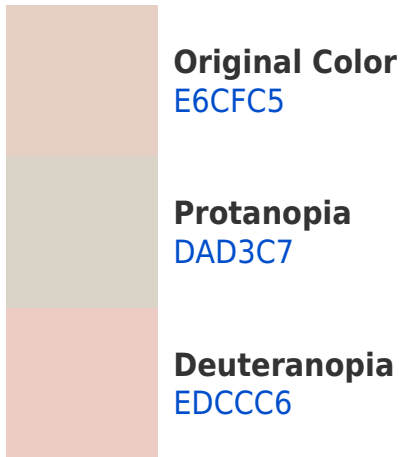


This preview shows how white text looks on a background with the Hex color E6CFC5.

Color Blindness Simulation

Color vision deficiency is a very complex topic, and I could not describe the different causes any better than Wikipedia does, so if you want to learn more, you should check out their [article about color blindness](#).

Dichromacy



Trichromacy



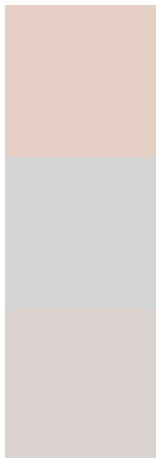
Original Color
E6CFC5

Protanomaly
DED2C6

Deuteranomaly
EACDC6

Tritanomaly
E8CDD4

Monochromacy



Original Color
E6CFC5

Achromatopsia
D5D5D5

Achromatomaly
DBD3CF

CSS Examples

Text

The CSS property to change the color of the text to Hex E6CFC5 is called "color". The color property can be set on classes, ids or directly on the HTML element.

This example shows how text in the color #E6CFC5 looks like.

```
.text, #text, p{  
    color:#E6CFC5  
}
```

If you want to add a text shadow in that color use the text-shadow property, you can generate a text shadow directly with our [CSS Text Shadow Generator](#).

Here you see how black text with a 4 pixel #E6CFC5 colored shadow looks like.

```
.shadow{ text-shadow: 4px 4px 2px #E6CFC5 }  
}
```

Border

The CSS property to change the border of an element to Hex E6CFC5 is called "border". The border property can be set on classes, ids or directly on the HTML element.

This example shows the color as border, it can be applied via the CSS property "border" or "border-color".

```
.border, #border, table{ border:4px solid #E6CFC5 }  
}
```

If only the border color should be changed use the property `border-color`.

```
.border{ border-color:#E6CFC5 }
```

If you want to add a box shadow in that color use:

Here you see how a box with a 4 pixel #E6CFC5 colored shadow looks like.

```
.boxshadow{ -moz-box-shadow:4px 4px 4px  
4px #E6CFC5; -webkit-box-shadow:4px 4px  
4px 4px #E6CFC5; box-shadow:4px 4px 4px  
4px #E6CFC5 }
```

Background

The CSS property to change the background color of an element to Hex E6CFC5 is called "background". The background property can be set on classes, ids or directly on the HTML element.

```
.background, #background, body{  
background:#E6CFC5 }
```

If only the background color should be changed can be used:

```
.background{ background-color:#E6CFC5 }
```

This example shows the color as background, it is applied via the CSS property "background".

To optimize and compress your CSS code, you can use our [online CSS compressor and optimizer](#) based on csstidy. If you want to create a linear or radial gradient as background or border, check our [CSS Gradient Generator](#).

Hey! You found this booklet interesting? Support Converting Colors with the new Membership Option!

The pro membership hides all ads, plus gives you double the colors in the color bucket, and more awesome pro features!

[Learn more, Memberships starting at \\$2.50/m!](#)

**Follow me
on Twitter!**

@ConvertingColor