

# Converting Colors

Hex(E6D0D8)

Have a look what the booklet for  
Hex(E6D0D8) contains.

<b>Hex(E6D0D8)</b> .....	3
<i><b>Conversions</b></i> .....	4
<i><b>Details</b></i> .....	6
<i><b>Harmonies</b></i> .....	11
<i><b>Previews</b></i> .....	23
<i><b>Color Blindness Simulation</b></i> .....	26
<i><b>CSS Examples</b></i> .....	29

# **Color**

**Hex(E6D0D8)**

# Conversions

## Conversions Part 1

Format	Color
Hex	E6D0D8
RGB	230, 208, 216
RGB Percent	90%, 82%, 85%
CMY	0.0980, 0.1843, 0.1529
CMYK	0.00, 0.10, 0.06, 0.10
HSL	338°, 31%, 86%
HSV	338°, 10%, 90%
XYZ	67.5837, 66.8926, 74.3153
YIQ	215.4900, 10.5440, 7.1520

# Conversions

## Conversions Part 2

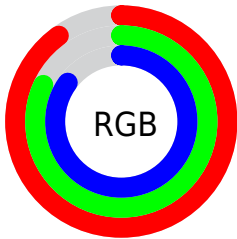
Format	Color
R <sub>Y</sub> B	230, 208, 216
Decimal	15126744
CIE Lab	85.45, 8.99, -1.18
CIE LCh	85, 9.071, 352.543
Yxy	66.8926, 0.3237, 0.3204
Android (android.graphics.Color)	4293316824 (0xFFE6D0D8)
YUV	215.4900, 0.2514, 12.7253
Hunter-Lab	81.7879, 4.3708, 3.3786

# Details

The Hex color **E6D0D8** is a light color, and the websafe version is hex **CCCCCC**. A complement of this color would be **D0E6DE**, and the grayscale version is **D7D7D7**.

A 20% lighter version of the original color is **FFFFFF**, and **AE9AA1** is the 20% darker color. If you saturate the color by 10%, you get **E6B9C9**, and if you desaturate by 10%, it is **E6E7E7**.

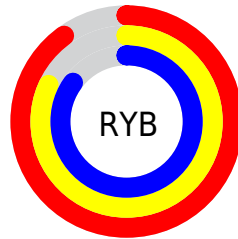
# Distribution



Red (90%)

Green (82%)

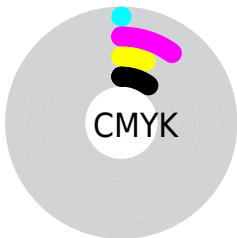
Blue (85%)



Red (90%)

Yellow (82%)

Blue (85%)

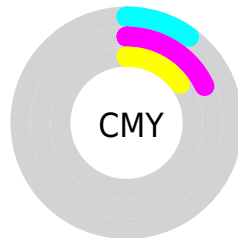


Cyan (0%)

Magenta (10%)

Yellow (6%)

Black (10%)



Cyan (10%)

Magenta (18%)

Yellow (15%)

# Brightness & Saturation Gradients

These gradients show how the Hex color E6D0D8 changes by changing the brightness by 10 percent. The first figure shows a shift by +10% for each color and the second figure -10%.

Similar to the brightness gradients but the following saturation gradients show a change of the Hex color E6D0D8 by changing the saturation by 10% instead.



 E6D0D8

FFFFFF

 E6D0D8

 CAB4BC

 AE9AA1

 948087

 7A676E

 614F55

 49383E

 322228

 1E0D14

 000000

 E6D0D8

 E6D0D8

 E6B9C9

 E6E7E7

 E6A2BB

 E6FEF5

 E68BAC

 E6FFFF

 E6749D

 E65D8F

 E64680

 E62F72

 E61863

 E60154

# Harmonies

## Analogous

The Analogous color harmony consists of three colors that are next to each other on the color wheel.



DFD1E0



E6D0D8



E8D0CF

# Triad

The Triadic color harmony groups three colors that are evenly spaced from another and form a triangle on the color wheel.



E6D0D8



D6D7C6



C3D9E3

# Complementary

The Complementary color scheme is a pair of colors which are on the opposite of each other on the color wheel.



E6D0D8



D0E6DE

# Split Complementary

Split-complementary colors differ from the complementary color scheme. The scheme consists of three colors, the original color and two neighbors of the complement color.



C1DBDC



E6D0D8



CCD9CB

# Square

The Square scheme is like the rectangle color scheme, but the four colors are evenly spaced on the color wheel.



E6D0D8



DFD4C5



C4DBD3



CAD7E6

# Rectangle

The Rectangle color scheme consists of four colors that form a rectangle on the color wheel.



E6D0D8



E7D1CA



C4DBD3



C1DAE1



# Sweetspot

The Sweet Spot groups the original color and five complimentary colors.



E6D0D8



FFF7FA



DED0E6



807A7C



000000



808080



# Same Dimension

The Same Dimension uses a secret algorithm to generate beautiful new colors.



E6D0D8



FFE3ED



E6D3D0



73676B



B30041



330013



# Inverse Universe

The Inverse Universe completely reimagines the original color for something new.



E6D0D8



FFE3ED



D0E3E6



73676B



B30041

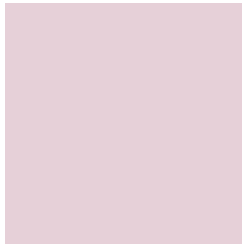


330013



# Previews

## White Background



This preview shows how the Hex color E6D0D8 looks on a white background.

## Color Contrast Check

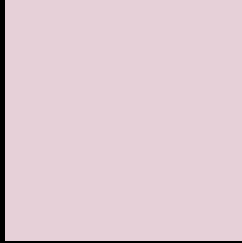
Large Text (above 18pt) WCAG AA × Fail

Any Text WCAG AA × Fail

Large Text (above 18pt) WCAG AAA × Fail

Any Text WCAG AAA × Fail

# Black Background



This preview shows how the Hex color E6D0D8 looks on a black background.

## Color Contrast Check

Large Text (above 18pt) WCAG AA ✓ Pass

Any Text WCAG AA ✓ Pass

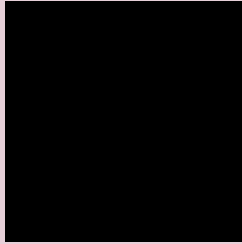
Large Text (above 18pt) WCAG AAA ✓ Pass

Any Text WCAG AAA ✓ Pass

If you want to check with other color combinations, try the [Color Contrast Checker](#).



## Hex E6D0D8 Background



This preview shows how black text looks on a background with the Hex color E6D0D8.

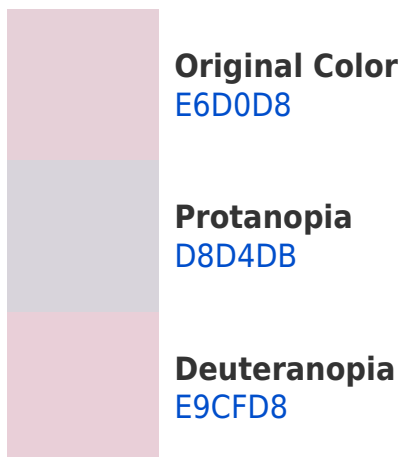


This preview shows how white text looks on a background with the Hex color E6D0D8.

# Color Blindness Simulation

Color vision deficiency is a very complex topic, and I could not describe the different causes any better than Wikipedia does, so if you want to learn more, you should check out their [article about color blindness](#).

## Dichromacy





**Tritanopia**  
E7CFDF

# Trichromacy



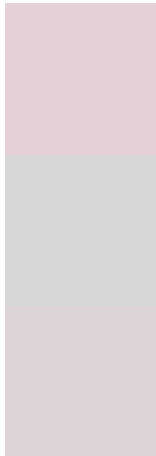
**Original Color**  
E6D0D8

**Protanomaly**  
DDD3DA

**Deuteranomaly**  
E8CFD8

**Tritanomaly**  
E7CFDC

# Monochromacy



**Original Color**  
E6D0D8

**Achromatopsia**  
D7D7D7

**Achromatomaly**  
DCD4D7

# CSS Examples

## Text

The CSS property to change the color of the text to Hex E6D0D8 is called "color". The color property can be set on classes, ids or directly on the HTML element.

This example shows how text in the color #E6D0D8 looks like.

```
.text, #text, p{  
    color:#E6D0D8  
}
```

If you want to add a text shadow in that color use the text-shadow property, you can generate a text shadow directly with our [CSS Text Shadow Generator](#).

Here you see how black text with a 4 pixel #E6D0D8 colored shadow looks like.

```
.shadow{ text-shadow: 4px 4px 2px #E6D0D8
}
```

## Border

The CSS property to change the border of an element to Hex E6D0D8 is called "border". The border property can be set on classes, ids or directly on the HTML element.

This example shows the color as border, it can be applied via the CSS property "border" or "border-color".

```
.border, #border, table{ border:4px solid
#E6D0D8 }
```

If only the border color should be changed use the property `border-color`.

```
.border{ border-color:#E6D0D8 }
```

If you want to add a box shadow in that color use:

Here you see how a box with a 4 pixel #E6D0D8 colored shadow looks like.

```
.boxshadow{ -moz-box-shadow:4px 4px 4px  
4px #E6D0D8; -webkit-box-shadow:4px 4px  
4px 4px #E6D0D8; box-shadow:4px 4px 4px  
4px #E6D0D8 }
```

# Background

The CSS property to change the background color of an element to Hex E6D0D8 is called "background". The background property can be set on classes, ids or directly on the HTML element.

```
.background, #background, body{  
background:#E6D0D8 }
```

If only the background color should be changed can be used:

```
.background{ background-color:#E6D0D8 }
```

This example shows the color as background, it is applied via the CSS property "background".

To optimize and compress your CSS code, you can use our [online CSS compressor and optimizer](#) based on csstidy. If you want to create a linear or radial gradient as background or border, check our [CSS Gradient Generator](#).



Hey! You found this booklet interesting? Support Converting Colors with the new Membership Option!

The pro membership hides all ads, plus gives you double the colors in the color bucket, and more awesome pro features!

**[Learn more, Memberships starting at \\$2.50/m!](#)**

**Follow me  
on Twitter!**

@ConvertingColor