

Converting Colors

Hex(E73D70)

Have a look what the booklet for
Hex(E73D70) contains.

Hex(E73D70)	3
<i>Conversions</i>	4
<i>Details</i>	6
<i>Harmonies</i>	11
<i>Previews</i>	23
<i>Color Blindness Simulation</i>	26
<i>CSS Examples</i>	29

Color

Hex(E73D70)

Conversions

Conversions Part 1

Format	Color
Hex	E73D70
RGB	231, 61, 112
RGB Percent	91%, 24%, 44%
CMY	0.0941, 0.7608, 0.5608
CMYK	0.00, 0.74, 0.52, 0.09
HSL	342°, 78%, 57%
HSV	342°, 74%, 91%
XYZ	37.5484, 21.4963, 17.4994
YIQ	117.6440, 84.9490, 51.9010

Conversions

Conversions Part 2

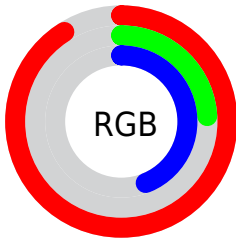
Format	Color
R _Y B	231, 61, 112
Decimal	15154544
CIE Lab	53.49, 67.36, 11.07
CIE LCh	53, 68.262, 9.332
Yxy	21.4963, 0.4905, 0.2808
Android (android.graphics.Color)	4293344624 (0xFFE73D70)
YUV	117.6440, -2.7825, 99.4132
Hunter-Lab	46.3641, 63.4228, 10.0767

Details

The Hex color **E73D70** is a dark color, and the websafe version is hex **CC3366**. The color can be described as middle washed rose. A complement of this color would be **3DE7B4**, and the grayscale version is **767676**.

A 20% lighter version of the original color is **FF79A3**, and **A90041** is the 20% darker color. If you saturate the color by 10%, you get **E72660**, and if you desaturate by 10%, it is **E75480**.

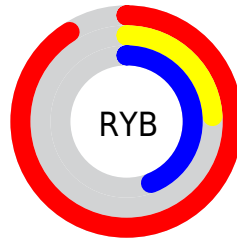
Distribution



Red (91%)

Green (24%)

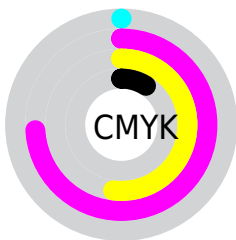
Blue (44%)



Red (91%)

Yellow (24%)

Blue (44%)

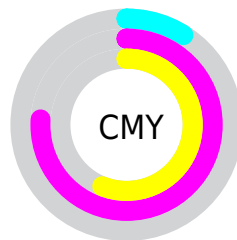


Cyan (0%)

Magenta (74%)

Yellow (52%)

Black (9%)



Cyan (9%)

Magenta (76%)

Yellow (56%)

Brightness & Saturation Gradients

These gradients show how the Hex color E73D70 changes by changing the brightness by 10 percent. The first figure shows a shift by +10% for each color and the second figure -10%.

Similar to the brightness gradients but the following saturation gradients show a change of the Hex color E73D70 by changing the saturation by 10% instead.

 E73D70

 E73D70

FFFFFF

 C81558

 FF79A3

 A90041

 FF96BE

 8B002B

 FFB3DA

 6D0017

 FFD1F7

 500002

 FFEFFF

 310002

 000000

 E73D70

 E73D70

 E72660

 E75480

 E70F50

 E76B90

 E70045

 E782A1

 E799B1

 E7B1C1

 E7C8D1

 E7DFE1

 E7F6F1

 E7FFFF

Harmonies

Analogous

The Analogous color harmony consists of three colors that are next to each other on the color wheel.



D349AB



E73D70



DC5238

Triad

The Triadic color harmony groups three colors that are evenly spaced from another and form a triangle on the color wheel.



E73D70



479013



0091EE

Complementary

The Complementary color scheme is a pair of colors which are on the opposite of each other on the color wheel.



E73D70



3DE7B4

Split Complementary

Split-complementary colors differ from the complementary color scheme. The scheme consists of three colors, the original color and two neighbors of the complement color.



0099C9



E73D70



009854

Square

The Square scheme is like the rectangle color scheme, but the four colors are evenly spaced on the color wheel.



E73D70



898300



009A91



0081F5

Rectangle

The Rectangle color scheme consists of four colors that form a rectangle on the color wheel.



E73D70



C8650F



009A91



0095E5

Sweetspot

The Sweet Spot groups the original color and five complimentary colors.



E73D70



FFC7D8



B43DE7



805E68



000000



808080

Same Dimension

The Same Dimension uses a secret algorithm to generate beautiful new colors.



E73D70



FF1F62



E75F3D



73676B



B30036



33000F

Inverse Universe

The Inverse Universe completely reimagines the original color for something new.



E73D70



FF1F62



3DC5E7



73676B



B30036



33000F

Previews

White Background



This preview shows how the Hex color E73D70 looks on a white background.

Color Contrast Check

Large Text (above 18pt) WCAG AA ✓ Pass

Any Text WCAG AA × Fail

Large Text (above 18pt) WCAG AAA × Fail

Any Text WCAG AAA × Fail

Black Background



Color Contrast Check

Large Text (above 18pt) WCAG AA ✓ Pass

Any Text WCAG AA ✓ Pass

Large Text (above 18pt) WCAG AAA ✓ Pass

Any Text WCAG AAA × Fail

If you want to check with other color combinations, try the [Color Contrast Checker](#).

Hex E73D70 Background



This preview shows how black text looks on a background with the Hex color E73D70.




This preview shows how white text looks on a background with the Hex color E73D70.

Color Blindness Simulation

Color vision deficiency is a very complex topic, and I could not describe the different causes any better than Wikipedia does, so if you want to learn more, you should check out their [article about color blindness](#).

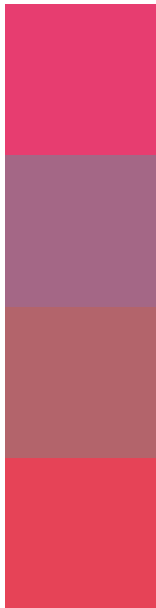
Dichromacy





Tritanopia
E54649

Trichromacy



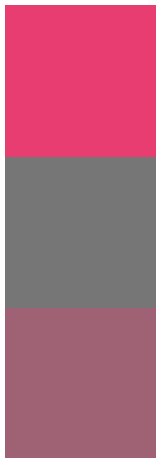
Original Color
E73D70

Protanomaly
A46786

Deuteranomaly
B3646B

Tritanomaly
E64357

Monochromacy



Original Color
E73D70

Achromatopsia
767676

Achromatomaly
9F6174

CSS Examples

Text

The CSS property to change the color of the text to Hex E73D70 is called "color". The color property can be set on classes, ids or directly on the HTML element.

This example shows how text in the color #E73D70 looks like.

```
.text, #text, p{  
    color:#E73D70  
}
```

If you want to add a text shadow in that color use the text-shadow property, you can generate a text shadow directly with our [CSS Text Shadow Generator](#).

Here you see how black text with a 4 pixel #E73D70 colored shadow looks like.

```
.shadow{ text-shadow: 4px 4px 2px #E73D70
}
```

Border

The CSS property to change the border of an element to Hex E73D70 is called "border". The border property can be set on classes, ids or directly on the HTML element.

This example shows the color as border, it can be applied via the CSS property "border" or "border-color".

```
.border, #border, table{ border:4px solid
#E73D70 }
```

If only the border color should be changed use the property `border-color`.

```
.border{ border-color:#E73D70 }
```

If you want to add a box shadow in that color use:

Here you see how a box with a 4 pixel #E73D70 colored shadow looks like.

```
.boxshadow{ -moz-box-shadow:4px 4px 4px  
4px #E73D70; -webkit-box-shadow:4px 4px  
4px 4px #E73D70; box-shadow:4px 4px 4px  
4px #E73D70 }
```

Background

The CSS property to change the background color of an element to Hex E73D70 is called "background". The background property can be set on classes, ids or directly on the HTML element.

```
.background, #background, body{  
background:#E73D70 }
```

If only the background color should be changed can be used:

```
.background{ background-color:#E73D70 }
```

This example shows the color as background, it is applied via the CSS property "background".

To optimize and compress your CSS code, you can use our [online CSS compressor and optimizer](#) based on csstidy. If you want to create a linear or radial gradient as background or border, check our [CSS Gradient Generator](#).

Hey! You found this booklet interesting? Support Converting Colors with the new Membership Option!

The pro membership hides all ads, plus gives you double the colors in the color bucket, and more awesome pro features!

[Learn more, Memberships starting at \\$2.50/m!](#)

**Follow me
on Twitter!**

@ConvertingColor