

Converting Colors

Hex(E74975)

Have a look what the booklet for
Hex(E74975) contains.

| | |
|--|----|
| Hex(E74975) | 3 |
| <i>Conversions</i> | 4 |
| <i>Details</i> | 6 |
| <i>Harmonies</i> | 11 |
| <i>Previews</i> | 23 |
| <i>Color Blindness Simulation</i> | 26 |
| <i>CSS Examples</i> | 29 |

Color

Hex(E74975)

Conversions

Conversions Part 1

| Format | Color |
|---------------|----------------------------|
| Hex | E74975 |
| RGB | 231, 73, 117 |
| RGB Percent | 91%, 29%, 46% |
| CMY | 0.0941, 0.7137, 0.5412 |
| CMYK | 0.00, 0.68, 0.49, 0.09 |
| HSL | 343°, 77%, 60% |
| HSV | 343°, 68%, 91% |
| XYZ | 38.5484, 23.0384, 19.2447 |
| YIQ | 125.2580, 80.0440, 47.1800 |

Conversions

Conversions Part 2

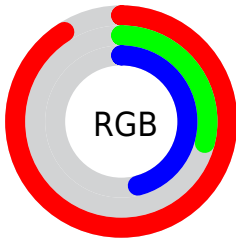
| Format | Color |
|-------------------------------------|-------------------------------|
| R_{YB} | 231, 73, 117 |
| Decimal | 15157621 |
| CIE _{Lab} | 55.11, 63.59, 10.37 |
| CIE _{LCh} | 55, 64.429, 9.259 |
| Yxy | 23.0384, 0.4769, 0.2850 |
| Android (android.graphics.Color) | 4293347701 (0xFFE74975) |
| YUV | 125.2580, -4.0712, 92.7357 |
| Hunter-Lab | 47.9983, 59.3600, 9.8267 |

Details

The Hex color **E74975** is a dark color, and the websafe version is hex **CC3366**. The color can be described as middle muted rose. A complement of this color would be **49E7BB**, and the grayscale version is **7D7D7D**.

A 20% lighter version of the original color is **FF83A9**, and **AA0045** is the 20% darker color. If you saturate the color by 10%, you get **E73264**, and if you desaturate by 10%, it is **E76086**.

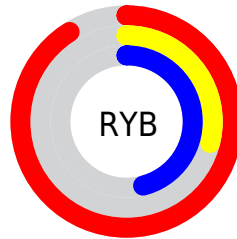
Distribution



Red (91%)

Green (29%)

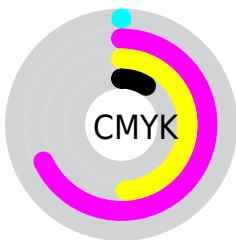
Blue (46%)



Red (91%)

Yellow (29%)

Blue (46%)

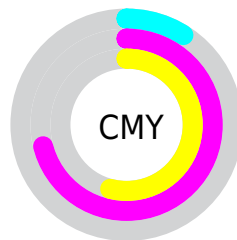


Cyan (0%)

Magenta (68%)

Yellow (49%)

Black (9%)



Cyan (9%)

Magenta (71%)

Yellow (54%)

Brightness & Saturation Gradients

These gradients show how the Hex color E74975 changes by changing the brightness by 10 percent. The first figure shows a shift by +10% for each color and the second figure -10%.

Similar to the brightness gradients but the following saturation gradients show a change of the Hex color E74975 by changing the saturation by 10% instead.

 E74975

 E74975

FFFFFF

 C8285D

 FF83A9

 AA0045

 FFA0C4

 8C002F

 FFBCE0

 6E001B

 FFDAFC

 510001

 FFF7FF

 340002

 000000

 E74975

 E74975

 E73264

 E76086

 E71B54

 E77796

 E70443

 E78EA7

 E70040

 E7A5B8

 E7BCC8

 E7D4D9

 E7EBEA

 E7FFFA

 E7FFFF

Harmonies

Analogous

The Analogous color harmony consists of three colors that are next to each other on the color wheel.



D353AD



E74975



DD5A40

Triad

The Triadic color harmony groups three colors that are evenly spaced from another and form a triangle on the color wheel.



E74975



519422



0095EC

Complementary

The Complementary color scheme is a pair of colors which are on the opposite of each other on the color wheel.



E74975



49E7BB

Split Complementary

Split-complementary colors differ from the complementary color scheme. The scheme consists of three colors, the original color and two neighbors of the complement color.



009CCA



E74975



009B5A

Square

The Square scheme is like the rectangle color scheme, but the four colors are evenly spaced on the color wheel.



E74975



8E8700



009E94



0085F3

Rectangle

The Rectangle color scheme consists of four colors that form a rectangle on the color wheel.



E74975



CA6B1E



009E94



0098E4

Sweetspot

The Sweet Spot groups the original color and five complimentary colors.



E74975



FFC9D8



BA49E7



806069



000000



808080

Same Dimension

The Same Dimension uses a secret algorithm to generate beautiful new colors.



E74975



FF2E68



E76B49



73676A



B30032



33000E

Inverse Universe

The Inverse Universe completely reimagines the original color for something new.



E74975



FF2E68



49C5E7



73676A



B30032



33000E

Previews

White Background



This preview shows how the Hex color E74975 looks on a white background.

Color Contrast Check

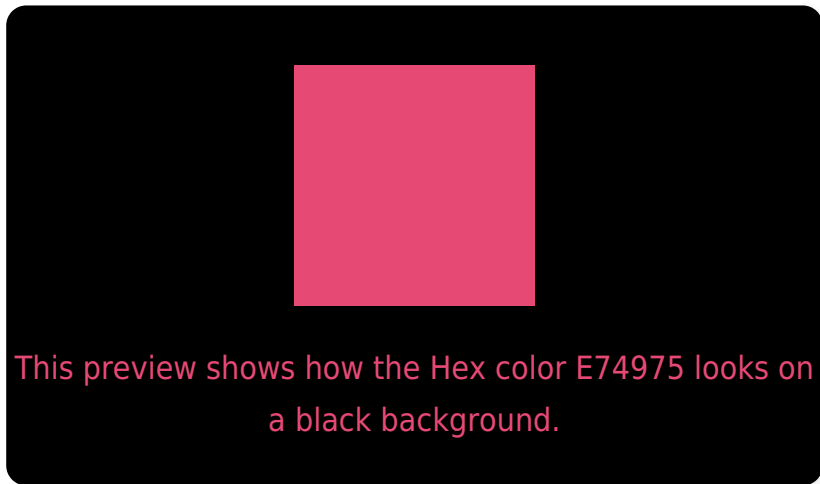
Large Text (above 18pt) WCAG AA ✓ Pass

Any Text WCAG AA × Fail

Large Text (above 18pt) WCAG AAA × Fail

Any Text WCAG AAA × Fail

Black Background



Color Contrast Check

Large Text (above 18pt) WCAG AA ✓ Pass

Any Text WCAG AA ✓ Pass

Large Text (above 18pt) WCAG AAA ✓ Pass

Any Text WCAG AAA × Fail

If you want to check with other color combinations, try the [Color Contrast Checker](#).

Hex E74975 Background



This preview shows how black text looks on a background with the Hex color E74975.



This preview shows how white text looks on a background with the Hex color E74975.

Color Blindness Simulation

Color vision deficiency is a very complex topic, and I could not describe the different causes any better than Wikipedia does, so if you want to learn more, you should check out their [article about color blindness](#).

Dichromacy

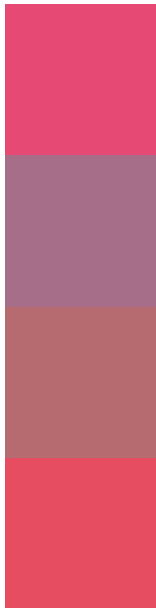


Original Color
E74975

Protanopia
828395

Deuteranopia
997F6D

Trichromacy



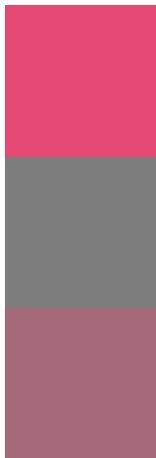
Original Color
E74975

Protanomaly
A76E89

Deuteranomaly
B56B70

Tritanomaly
E64D60

Monochromacy



Original Color
E74975

Achromatopsia
7D7D7D

Achromatomaly
A46A7A

CSS Examples

Text

The CSS property to change the color of the text to Hex E74975 is called "color". The color property can be set on classes, ids or directly on the HTML element.

This example shows how text in the color #E74975 looks like.

```
.text, #text, p{  
    color:#E74975  
}
```

If you want to add a text shadow in that color use the text-shadow property, you can generate a text shadow directly with our [CSS Text Shadow Generator](#).

Here you see how black text with a 4 pixel #E74975 colored shadow looks like.

```
.shadow{ text-shadow: 4px 4px 2px #E74975 }  
}
```

Border

The CSS property to change the border of an element to Hex E74975 is called "border". The border property can be set on classes, ids or directly on the HTML element.

This example shows the color as border, it can be applied via the CSS property "border" or "border-color".

```
.border, #border, table{ border:4px solid #E74975 }  
}
```

If only the border color should be changed use the property `border-color`.

```
.border{ border-color:#E74975 }
```

If you want to add a box shadow in that color use:

Here you see how a box with a 4 pixel #E74975 colored shadow looks like.

```
.boxshadow{ -moz-box-shadow:4px 4px 4px  
4px #E74975; -webkit-box-shadow:4px 4px  
4px 4px #E74975; box-shadow:4px 4px 4px  
4px #E74975 }
```

Background

The CSS property to change the background color of an element to Hex E74975 is called "background". The background property can be set on classes, ids or directly on the HTML element.

```
.background, #background, body{  
background:#E74975 }
```

If only the background color should be changed can be used:

```
.background{ background-color:#E74975 }
```

This example shows the color as background, it is applied via the CSS property "background".

To optimize and compress your CSS code, you can use our [online CSS compressor and optimizer](#) based on csstidy. If you want to create a linear or radial gradient as background or border, check our [CSS Gradient Generator](#).

Hey! You found this booklet interesting? Support Converting Colors with the new Membership Option!

The pro membership hides all ads, plus gives you double the colors in the color bucket, and more awesome pro features!

[Learn more, Memberships starting at \\$2.50/m!](#)

**Follow me
on Twitter!**

@ConvertingColor