

Converting Colors

Hex(E78C68)

Have a look what the booklet for
Hex(E78C68) contains.

| | |
|--|----|
| Hex(E78C68) | 3 |
| <i>Conversions</i> | 4 |
| <i>Details</i> | 6 |
| <i>Harmonies</i> | 11 |
| <i>Previews</i> | 23 |
| <i>Color Blindness Simulation</i> | 26 |
| <i>CSS Examples</i> | 29 |

Color

Hex(E78C68)

Conversions

Conversions Part 1

| Format | Color |
|---------------|---------------------------|
| Hex | E78C68 |
| RGB | 231, 140, 104 |
| RGB Percent | 91%, 55%, 41% |
| CMY | 0.0941, 0.4510, 0.5922 |
| CMYK | 0.00, 0.39, 0.55, 0.09 |
| HSL | 17°, 73%, 66% |
| HSV | 17°, 55%, 91% |
| XYZ | 44.8318, 36.7446, 17.8262 |
| YIQ | 163.1050, 65.7920, 8.0960 |

Conversions

Conversions Part 2

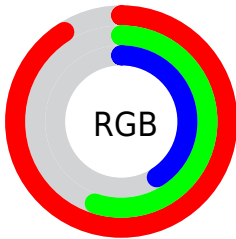
| Format | Color |
|-------------------------------------|--------------------------------|
| R _Y B | 231, 154, 104 |
| Decimal | 15174760 |
| CIE Lab | 67.08, 31.09, 33.84 |
| CIE LCh | 67, 45.950, 47.427 |
| Yxy | 36.7446, 0.4510, 0.3697 |
| Android (android.graphics.Color) | 4293364840 (0xFFE78C68) |
| YUV | 163.1050, -29.1388, 59.5439 |
| Hunter-Lab | 60.6173, 25.9360, 24.9962 |

Details

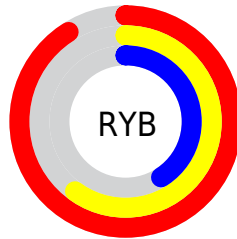
The Hex color **E78C68** is a light color, and the websafe version is hex **FF9966**. A complement of this color would be **68C3E7**, and the grayscale version is **A3A3A3**.

A 20% lighter version of the original color is **FFC29C**, and **AB5938** is the 20% darker color. If you saturate the color by 10%, you get **E77B51**, and if you desaturate by 10%, it is **E79D7F**.

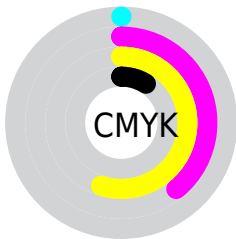
Distribution



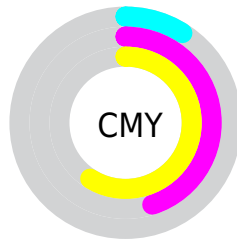
- Red (91%)
- Green (55%)
- Blue (41%)



- Red (91%)
- Yellow (60%)
- Blue (41%)



- Cyan (0%)
- Magenta (39%)
- Yellow (55%)
- Black (9%)



- Cyan (9%)
- Magenta (45%)
- Yellow (59%)

Brightness & Saturation Gradients

These gradients show how the Hex color E78C68 changes by changing the brightness by 10 percent. The first figure shows a shift by +10% for each color and the second figure -10%.

Similar to the brightness gradients but the following saturation gradients show a change of the Hex color E78C68 by changing the saturation by 10% instead.

 E78C68

 E78C68

FFFFFF

 C9724F

 FFC29C

 AB5938

 FFDFB7

 8E4021

 FFFBD2

 72280B

 FFFFEF

 560F00

 3A0000

 200001

 000000

 E78C68

 E78C68

 E77B51

 E79D7F

 E76B3A

 E7AD96

 E75A23

 E7BEAD

 E74A0C

 E7CEC4

 E74100

 E7DFDB

 E7EFF3

 E7FFFF

Harmonies

Analogous

The Analogous color harmony consists of three colors that are next to each other on the color wheel.



F2828D



E78C68



CB9B51

Triad

The Triadic color harmony groups three colors that are evenly spaced from another and form a triangle on the color wheel.



E78C68



32B790



8B9FF2

Complementary

The Complementary color scheme is a pair of colors which are on the opposite of each other on the color wheel.



E78C68



68C3E7

Split Complementary

Split-complementary colors differ from the complementary color scheme. The scheme consists of three colors, the original color and two neighbors of the complement color.



2AADF3



E78C68



00B9BB

Square

The Square scheme is like the rectangle color scheme, but the four colors are evenly spaced on the color wheel.



E78C68



76B269



00B5DF



C58FDC

Rectangle

The Rectangle color scheme consists of four colors that form a rectangle on the color wheel.



E78C68



B3A44F



00B5DF



72A4F5

Sweetspot

The Sweet Spot groups the original color and five complimentary colors.



E78C68



FFE2D6



E768C3



806E67



000000



808080

Same Dimension

The Same Dimension uses a secret algorithm to generate beautiful new colors.



E78C68



FF8657



E7CB68



736B67



B33300



330E00

Inverse Universe

The Inverse Universe completely reimagines the original color for something new.



68C3E7



57CFFF



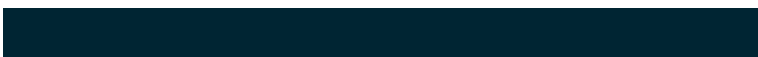
6884E7



676F73



0080B3



002533

Previews

White Background



This preview shows how the Hex color E78C68 looks on a white background.

Color Contrast Check

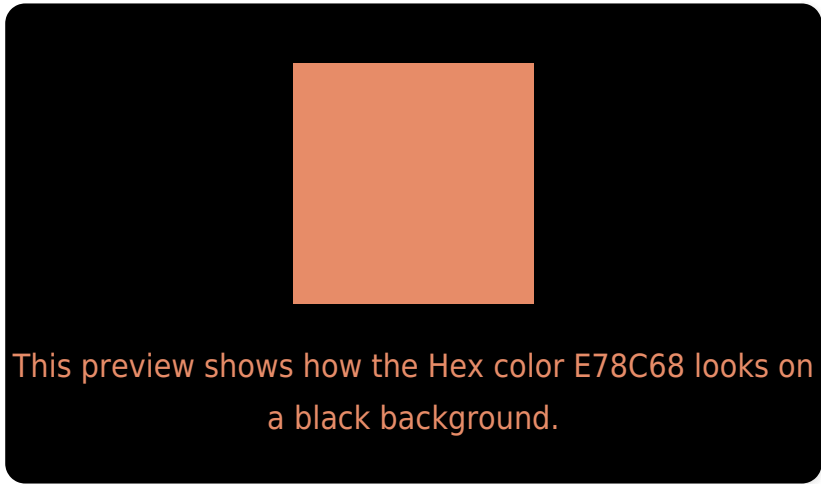
Large Text (above 18pt) WCAG AA × Fail

Any Text WCAG AA × Fail

Large Text (above 18pt) WCAG AAA × Fail

Any Text WCAG AAA × Fail

Black Background



Color Contrast Check

Large Text (above 18pt) WCAG AA ✓ Pass

Any Text WCAG AA ✓ Pass

Large Text (above 18pt) WCAG AAA ✓ Pass

Any Text WCAG AAA ✓ Pass

If you want to check with other color combinations, try the [Color Contrast Checker](#).

Hex E78C68 Background



This preview shows how black text looks on a background with the Hex color E78C68.




This preview shows how white text looks on a background with the Hex color E78C68.

Color Blindness Simulation

Color vision deficiency is a very complex topic, and I could not describe the different causes any better than Wikipedia does, so if you want to learn more, you should check out their [article about color blindness](#).

Dichromacy



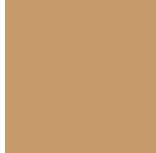


Tritanopia
EA8791

Trichromacy



Original Color
E78C68



Protanomaly
C59B6E



Deuteranomaly
D29666

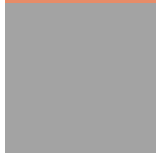


Tritanomaly
E98982

Monochromacy



Original Color
E78C68



Achromatopsia
A3A3A3



Achromatomaly
BC9B8E

CSS Examples

Text

The CSS property to change the color of the text to Hex E78C68 is called "color". The color property can be set on classes, ids or directly on the HTML element.

This example shows how text in the color #E78C68 looks like.

```
.text, #text, p{  
    color:#E78C68  
}
```

If you want to add a text shadow in that color use the text-shadow property, you can generate a text shadow directly with our [CSS Text Shadow Generator](#).

Here you see how black text with a 4 pixel #E78C68 colored shadow looks like.

```
.shadow{ text-shadow: 4px 4px 2px #E78C68
}
```

Border

The CSS property to change the border of an element to Hex E78C68 is called "border". The border property can be set on classes, ids or directly on the HTML element.

This example shows the color as border, it can be applied via the CSS property "border" or "border-color".

```
.border, #border, table{ border:4px solid
#E78C68 }
```

If only the border color should be changed use the property `border-color`.

```
.border{ border-color:#E78C68 }
```

If you want to add a box shadow in that color use:

Here you see how a box with a 4 pixel #E78C68 colored shadow looks like.

```
.boxshadow{ -moz-box-shadow:4px 4px 4px  
4px #E78C68; -webkit-box-shadow:4px 4px  
4px 4px #E78C68; box-shadow:4px 4px 4px  
4px #E78C68 }
```

Background

The CSS property to change the background color of an element to Hex E78C68 is called "background". The background property can be set on classes, ids or directly on the HTML element.

```
.background, #background, body{  
background:#E78C68 }
```

If only the background color should be changed can be used:

```
.background{ background-color:#E78C68 }
```

This example shows the color as background, it is applied via the CSS property "background".

To optimize and compress your CSS code, you can use our [online CSS compressor and optimizer](#) based on csstidy. If you want to create a linear or radial gradient as background or border, check our [CSS Gradient Generator](#).

Hey! You found this booklet interesting? Support Converting Colors with the new Membership Option!

The pro membership hides all ads, plus gives you double the colors in the color bucket, and more awesome pro features!

[Learn more, Memberships starting at \\$2.50/m!](#)

**Follow me
on Twitter!**

@ConvertingColor