

# Converting Colors

Hex(E7A6B3)

Have a look what the booklet for  
Hex(E7A6B3) contains.

<b>Hex(E7A6B3)</b> .....	3
<i><b>Conversions</b></i> .....	4
<i><b>Details</b></i> .....	6
<i><b>Harmonies</b></i> .....	11
<i><b>Previews</b></i> .....	23
<i><b>Color Blindness Simulation</b></i> .....	26
<i><b>CSS Examples</b></i> .....	29

# **Color**

**Hex(E7A6B3)**

# Conversions

## Conversions Part 1

Format	Color
Hex	E7A6B3
RGB	231, 166, 179
RGB Percent	91%, 65%, 70%
CMY	0.0941, 0.3490, 0.2980
CMYK	0.00, 0.28, 0.23, 0.09
HSL	348°, 58%, 78%
HSV	348°, 28%, 91%
XYZ	54.7279, 47.5160, 48.9349
YIQ	186.9170, 34.5670, 17.8230

# Conversions

## Conversions Part 2

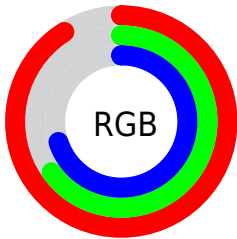
Format	Color
R <sub>Y</sub> B	231, 166, 179
Decimal	15181491
CIE Lab	74.52, 25.80, 2.87
CIE LCh	75, 25.961, 6.347
Yxy	47.5160, 0.3620, 0.3143
Android (android.graphics.Color)	4293371571 (0xFFE7A6B3)
YUV	186.9170, -3.9031, 38.6608
Hunter-Lab	68.9319, 21.0878, 6.1622

# Details

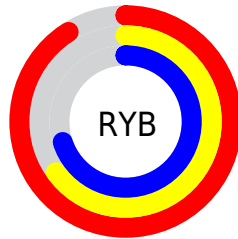
The Hex color **E7A6B3** is a light color, and the websafe version is hex **CC9999**. A complement of this color would be **A6E7DA**, and the grayscale version is **BBBBBB**.

A 20% lighter version of the original color is **FFDDEB**, and **AE717E** is the 20% darker color. If you saturate the color by 10%, you get **E78FA1**, and if you desaturate by 10%, it is **E7BDC5**.

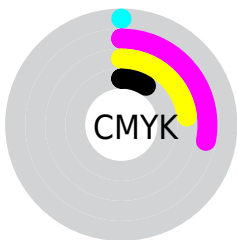
# Distribution



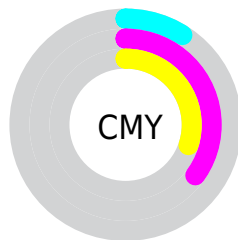
- Red (91%)
- Green (65%)
- Blue (70%)



- Red (91%)
- Yellow (65%)
- Blue (70%)



- Cyan (0%)
- Magenta (28%)
- Yellow (23%)
- Black (9%)



- Cyan (9%)
- Magenta (35%)
- Yellow (30%)

# Brightness & Saturation Gradients

These gradients show how the Hex color E7A6B3 changes by changing the brightness by 10 percent. The first figure shows a shift by +10% for each color and the second figure -10%.

Similar to the brightness gradients but the following saturation gradients show a change of the Hex color E7A6B3 by changing the saturation by 10% instead.



 E7A6B3

 E7A6B3

FFFFFF

 CA8B98

 FFDDEB

 AE717E

 FFFAFF

 935865

 78404E

 5E2937

 451222

 2E000B

 060000

 000000

 E7A6B3

 E7A6B3

 E78FA1

 E7BDC5

 E7788E

 E7D4D8

 E7617C

 E7EBEA

 E74A69

 E7FFFD

 E73357

 E7FFFF

 E71B44

 E70432

 E7002E

# Harmonies

## Analogous

The Analogous color harmony consists of three colors that are next to each other on the color wheel.



DAA9CB



E7A6B3



E6A99C

# Triad

The Triadic color harmony groups three colors that are evenly spaced from another and form a triangle on the color wheel.



E7A6B3



A9BE90



82BFE2

# Complementary

The Complementary color scheme is a pair of colors which are on the opposite of each other on the color wheel.



E7A6B3



A6E7DA

# Split Complementary

Split-complementary colors differ from the complementary color scheme. The scheme consists of three colors, the original color and two neighbors of the complement color.



72C3D3



E7A6B3



8EC3A3

# Square

The Square scheme is like the rectangle color scheme, but the four colors are evenly spaced on the color wheel.



E7A6B3



C4B788



78C5BC



A1B8E6

# Rectangle

The Rectangle color scheme consists of four colors that form a rectangle on the color wheel.



E7A6B3



DFAD90



78C5BC



7BC1DE



# Sweetspot

The Sweet Spot groups the original color and five complimentary colors.



E7A6B3



FFEBEF



DAA6E7



807375



000000



808080



# Same Dimension

The Same Dimension uses a secret algorithm to generate beautiful new colors.



E7A6B3



FFA8BA



E7BAA6



73676A



B30024



33000A



# Inverse Universe

The Inverse Universe completely reimagines the original color for something new.



E7A6B3



FFA8BA



A6D3E7



73676A



B30024



33000A



# Previews

## White Background



This preview shows how the Hex color E7A6B3 looks on a white background.

## Color Contrast Check

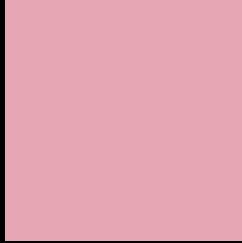
Large Text (above 18pt) WCAG AA × Fail

Any Text WCAG AA × Fail

Large Text (above 18pt) WCAG AAA × Fail

Any Text WCAG AAA × Fail

# Black Background



This preview shows how the Hex color E7A6B3 looks on a black background.

## Color Contrast Check

Large Text (above 18pt) WCAG AA ✓ Pass

Any Text WCAG AA ✓ Pass

Large Text (above 18pt) WCAG AAA ✓ Pass

Any Text WCAG AAA ✓ Pass

If you want to check with other color combinations, try the [Color Contrast Checker](#).



## Hex E7A6B3 Background



This preview shows how black text looks on a background with the Hex color E7A6B3.



This preview shows how white text looks on a background with the Hex color E7A6B3.

# Color Blindness Simulation

Color vision deficiency is a very complex topic, and I could not describe the different causes any better than Wikipedia does, so if you want to learn more, you should check out their [article about color blindness](#).

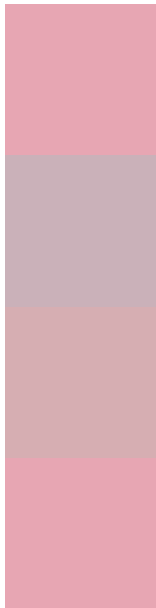
## Dichromacy





**Tritanopia**  
E7A6B3

# Trichromacy



**Original Color**  
E7A6B3

**Protanomaly**  
CAB1B9

**Deuteranomaly**  
D6AEB2

**Tritanomaly**  
E7A6B3

# Monochromacy



**Original Color**  
E7A6B3

**Achromatopsia**  
BBBBBB

**Achromatomaly**  
CBB3B8

# CSS Examples

## Text

The CSS property to change the color of the text to Hex E7A6B3 is called "color". The color property can be set on classes, ids or directly on the HTML element.

This example shows how text in the color #E7A6B3 looks like.

```
.text, #text, p{  
    color:#E7A6B3  
}
```

If you want to add a text shadow in that color use the text-shadow property, you can generate a text shadow directly with our [CSS Text Shadow Generator](#).

Here you see how black text with a 4 pixel #E7A6B3 colored shadow looks like.

```
.shadow{ text-shadow: 4px 4px 2px #E7A6B3
}
```

## Border

The CSS property to change the border of an element to Hex E7A6B3 is called "border". The border property can be set on classes, ids or directly on the HTML element.

This example shows the color as border, it can be applied via the CSS property "border" or "border-color".

```
.border, #border, table{ border:4px solid
#E7A6B3 }
```

If only the border color should be changed use the property `border-color`.

```
.border{ border-color:#E7A6B3 }
```

If you want to add a box shadow in that color use:

Here you see how a box with a 4 pixel #E7A6B3 colored shadow looks like.

```
.boxshadow{ -moz-box-shadow:4px 4px 4px  
4px #E7A6B3; -webkit-box-shadow:4px 4px  
4px 4px #E7A6B3; box-shadow:4px 4px 4px  
4px #E7A6B3 }
```

# Background

The CSS property to change the background color of an element to Hex E7A6B3 is called "background". The background property can be set on classes, ids or directly on the HTML element.

```
.background, #background, body{  
background:#E7A6B3 }
```

If only the background color should be changed can be used:

```
.background{ background-color:#E7A6B3 }
```

This example shows the color as background, it is applied via the CSS property "background".

To optimize and compress your CSS code, you can use our [online CSS compressor and optimizer](#) based on csstidy. If you want to create a linear or radial gradient as background or border, check our [CSS Gradient Generator](#).



Hey! You found this booklet interesting? Support Converting Colors with the new Membership Option!

The pro membership hides all ads, plus gives you double the colors in the color bucket, and more awesome pro features!

**[Learn more, Memberships starting at \\$2.50/m!](#)**

**Follow me  
on Twitter!**

@ConvertingColor