

Converting Colors

Hex(E7B8C1)

Have a look what the booklet for
Hex(E7B8C1) contains.

Hex(E7B8C1)	3
<i>Conversions</i>	4
<i>Details</i>	6
<i>Harmonies</i>	11
<i>Previews</i>	23
<i>Color Blindness Simulation</i>	26
<i>CSS Examples</i>	29

Color

Hex(E7B8C1)

Conversions

Conversions Part 1

Format	Color
Hex	E7B8C1
RGB	231, 184, 193
RGB Percent	91%, 72%, 76%
CMY	0.0941, 0.2784, 0.2431
CMYK	0.00, 0.20, 0.16, 0.09
HSL	349°, 49%, 81%
HSV	349°, 20%, 91%
XYZ	59.7211, 55.1202, 57.9437
YIQ	199.0790, 25.1230, 12.7630

Conversions

Conversions Part 2

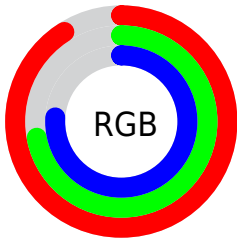
Format	Color
RYB	231, 184, 193
Decimal	15186113
CIELab	79.11, 18.29, 1.91
CIELCh	79, 18.393, 5.961
Yxy	55.1202, 0.3456, 0.3190
Android (android.graphics.Color)	4293376193 (0xFFE7B8C1)
YUV	199.0790, -2.9969, 27.9947
Hunter-Lab	74.2430, 13.6605, 5.6966

Details

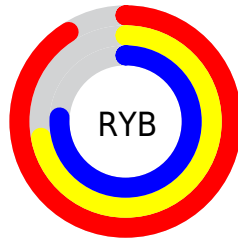
The Hex color **E7B8C1** is a light color, and the websafe version is hex **FFCCCC**. A complement of this color would be **B8E7DE**, and the grayscale version is **C7C7C7**.

A 20% lighter version of the original color is **FFF0F9**, and **AF838C** is the 20% darker color. If you saturate the color by 10%, you get **E7A1AE**, and if you desaturate by 10%, it is **E7CFD4**.

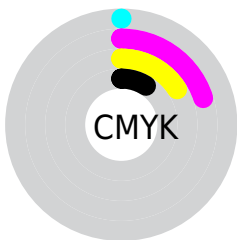
Distribution



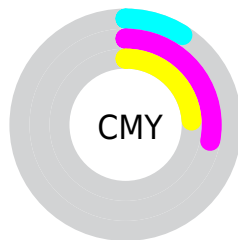
- Red (91%)
- Green (72%)
- Blue (76%)



- Red (91%)
- Yellow (72%)
- Blue (76%)



- Cyan (0%)
- Magenta (20%)
- Yellow (16%)
- Black (9%)



- Cyan (9%)
- Magenta (28%)
- Yellow (24%)

Brightness & Saturation Gradients

These gradients show how the Hex color E7B8C1 changes by changing the brightness by 10 percent. The first figure shows a shift by +10% for each color and the second figure -10%.

Similar to the brightness gradients but the following saturation gradients show a change of the Hex color E7B8C1 by changing the saturation by 10% instead.

 E7B8C1

FFFFFF

 FFF0F9

 E7B8C1

 CB9DA6

 AF838C

 946972

 7A515A

 603A42

 48232C

 300E18

 1C0001

 000000

 E7B8C1

 E7B8C1

 E7A1AE

 E7CFD4

 E78A9C

 E7E6E6

 E77389

 E7FDF9

 E75C76

 E7FFFF

 E74564

 E72D51

 E7163E

 E7002C

Harmonies

Analogous

The Analogous color harmony consists of three colors that are next to each other on the color wheel.



DDBAD2



E7B8C1



E7BAB1

Triad

The Triadic color harmony groups three colors that are evenly spaced from another and form a triangle on the color wheel.



E7B8C1



BBC9A8



A1C9E3

Complementary

The Complementary color scheme is a pair of colors which are on the opposite of each other on the color wheel.



E7B8C1



B8E7DE

Split Complementary

Split-complementary colors differ from the complementary color scheme. The scheme consists of three colors, the original color and two neighbors of the complement color.



97CDD7



E7B8C1



A8CDB5

Square

The Square scheme is like the rectangle color scheme, but the four colors are evenly spaced on the color wheel.



E7B8C1



CEC4A2



9ACEC7



B5C4E6

Rectangle

The Rectangle color scheme consists of four colors that form a rectangle on the color wheel.



E7B8C1



E2BCA8



9ACEC7



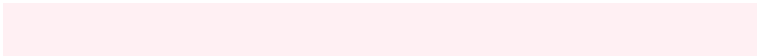
9DCBE0

Sweetspot

The Sweet Spot groups the original color and five complimentary colors.



E7B8C1



FFF0F3



DEB8E7



807778



000000



808080

Same Dimension

The Same Dimension uses a secret algorithm to generate beautiful new colors.



E7B8C1



FFC2CE



E7C6B8



736769



B30022



33000A

Inverse Universe

The Inverse Universe completely reimagines the original color for something new.



E7B8C1



FFC2CE



B8D9E7



736769



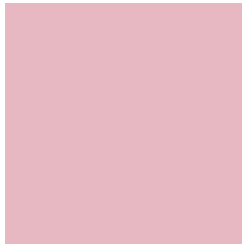
B30022



33000A

Previews

White Background



This preview shows how the Hex color E7B8C1 looks on a white background.

Color Contrast Check

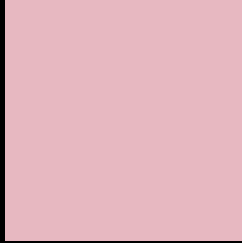
Large Text (above 18pt) WCAG AA × Fail

Any Text WCAG AA × Fail

Large Text (above 18pt) WCAG AAA × Fail

Any Text WCAG AAA × Fail

Black Background



This preview shows how the Hex color E7B8C1 looks on a black background.

Color Contrast Check

Large Text (above 18pt) WCAG AA ✓ Pass

Any Text WCAG AA ✓ Pass

Large Text (above 18pt) WCAG AAA ✓ Pass

Any Text WCAG AAA ✓ Pass

If you want to check with other color combinations, try the [Color Contrast Checker](#).

Hex E7B8C1 Background



This preview shows how black text looks on a background with the Hex color E7B8C1.



This preview shows how white text looks on a background with the Hex color E7B8C1.

Color Blindness Simulation

Color vision deficiency is a very complex topic, and I could not describe the different causes any better than Wikipedia does, so if you want to learn more, you should check out their [article about color blindness](#).

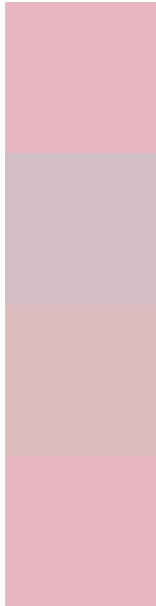
Dichromacy





Tritanopia
E8B7C5

Trichromacy



Original Color
E7B8C1

Protanomaly
D3BFC5

Deuteranomaly
DEBCC0

Tritanomaly
E8B7C4

Monochromacy



Original Color
E7B8C1

Achromatopsia
C7C7C7

Achromatomaly
D3C2C5

CSS Examples

Text

The CSS property to change the color of the text to Hex E7B8C1 is called "color". The color property can be set on classes, ids or directly on the HTML element.

This example shows how text in the color #E7B8C1 looks like.

```
.text, #text, p{  
    color:#E7B8C1  
}
```

If you want to add a text shadow in that color use the text-shadow property, you can generate a text shadow directly with our [CSS Text Shadow Generator](#).

Here you see how black text with a 4 pixel #E7B8C1 colored shadow looks like.

```
.shadow{ text-shadow: 4px 4px 2px #E7B8C1  
}
```

Border

The CSS property to change the border of an element to Hex E7B8C1 is called "border". The border property can be set on classes, ids or directly on the HTML element.

This example shows the color as border, it can be applied via the CSS property "border" or "border-color".

```
.border, #border, table{ border:4px solid  
#E7B8C1 }
```

If only the border color should be changed use the property `border-color`.

```
.border{ border-color:#E7B8C1 }
```

If you want to add a box shadow in that color use:

Here you see how a box with a 4 pixel #E7B8C1 colored shadow looks like.

```
.boxshadow{ -moz-box-shadow:4px 4px 4px  
4px #E7B8C1; -webkit-box-shadow:4px 4px  
4px 4px #E7B8C1; box-shadow:4px 4px 4px  
4px #E7B8C1 }
```

Background

The CSS property to change the background color of an element to Hex E7B8C1 is called "background". The background property can be set on classes, ids or directly on the HTML element.

```
.background, #background, body{  
background:#E7B8C1 }
```

If only the background color should be changed can be used:

```
.background{ background-color:#E7B8C1 }
```

This example shows the color as background, it is applied via the CSS property "background".

To optimize and compress your CSS code, you can use our [online CSS compressor and optimizer](#) based on csstidy. If you want to create a linear or radial gradient as background or border, check our [CSS Gradient Generator](#).

Hey! You found this booklet interesting? Support Converting Colors with the new Membership Option!

The pro membership hides all ads, plus gives you double the colors in the color bucket, and more awesome pro features!

[Learn more, Memberships starting at \\$2.50/m!](#)

**Follow me
on Twitter!**

@ConvertingColor