

# Converting Colors

Hex(E7B8E7)

Have a look what the booklet for  
Hex(E7B8E7) contains.

<b>Hex(E7B8E7)</b> .....	3
<i><b>Conversions</b></i> .....	4
<i><b>Details</b></i> .....	6
<i><b>Harmonies</b></i> .....	11
<i><b>Previews</b></i> .....	23
<i><b>Color Blindness Simulation</b></i> .....	26
<i><b>CSS Examples</b></i> .....	29

# **Color**

**Hex(E7B8E7)**

# Conversions

## Conversions Part 1

Format	Color
Hex	E7B8E7
RGB	231, 184, 231
RGB Percent	91%, 72%, 91%
CMY	0.0941, 0.2784, 0.0941
CMYK	0.00, 0.20, 0.00, 0.09
HSL	300°, 49%, 81%
HSV	300°, 20%, 91%
XYZ	64.5193, 57.0394, 83.2105
YIQ	203.4110, 12.9250, 24.5810

# Conversions

## Conversions Part 2

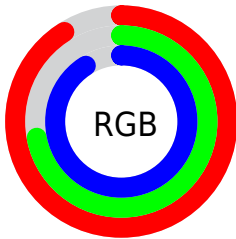
<b>Format</b>	<b>Color</b>
R <sub>Y</sub> B	231, 184, 231
Decimal	15186151
CIE Lab	80.20, 24.76, -16.99
CIE LCh	80, 30.031, 325.550
Yxy	57.0394, 0.3151, 0.2786
Android (android.graphics.Color)	4293376231 (0xFFE7B8E7)
YUV	203.4110, 13.6014, 24.1956
Hunter-Lab	75.5244, 20.3218, -12.4568

# Details

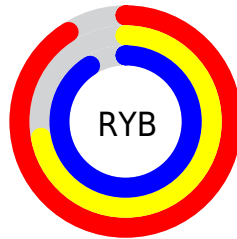
The Hex color **E7B8E7** is a light color, and the websafe version is hex **FFCCFF**. A complement of this color would be **B8E7B8**, and the grayscale version is **CBCBCB**.

A 20% lighter version of the original color is **FFF0FF**, and **AF83AF** is the 20% darker color. If you saturate the color by 10%, you get **E7A1E7**, and if you desaturate by 10%, it is **E7CFE7**.

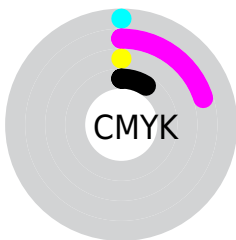
# Distribution



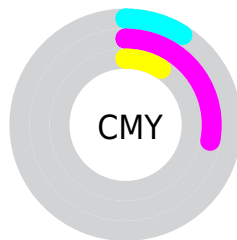
- Red (91%)
- Green (72%)
- Blue (91%)



- Red (91%)
- Yellow (72%)
- Blue (91%)



- Cyan (0%)
- Magenta (20%)
- Yellow (0%)
- Black (9%)



- Cyan (9%)
- Magenta (28%)
- Yellow (9%)

# Brightness & Saturation Gradients

These gradients show how the Hex color E7B8E7 changes by changing the brightness by 10 percent. The first figure shows a shift by +10% for each color and the second figure -10%.

Similar to the brightness gradients but the following saturation gradients show a change of the Hex color E7B8E7 by changing the saturation by 10% instead.



 E7B8E7

FFFFFF

 FFF0FF

 E7B8E7

 CB9DCB

 AF83AF

 946995

 7A517B

 603962

 48224A

 310C33

 1F001F

 000000

 E7B8E7

 E7B8E7

 E7A1E7

 E7CFE7

 E78AE7

 E7E6E7

 E773E7

 E7FDE7

 E75CE7

 E7FFE7

 E745E7

 E72DE7

 E716E7

 E700E7

# Harmonies

## Analogous

The Analogous color harmony consists of three colors that are next to each other on the color wheel.



C6C1F9



E7B8E7



FBB3CC

# Triad

The Triadic color harmony groups three colors that are evenly spaced from another and form a triangle on the color wheel.



E7B8E7



DFC48F



72D6DE

# Complementary

The Complementary color scheme is a pair of colors which are on the opposite of each other on the color wheel.



E7B8E7



B8E7B8

# Split Complementary

Split-complementary colors differ from the complementary color scheme. The scheme consists of three colors, the original color and two neighbors of the complement color.



84D6C2



E7B8E7



C2CD94

# Square

The Square scheme is like the rectangle color scheme, but the four colors are evenly spaced on the color wheel.



E7B8E7



F5BA9A



A2D3A6



7CD2F4

# Rectangle

The Rectangle color scheme consists of four colors that form a rectangle on the color wheel.



E7B8E7



FFB3B9



A2D3A6



76D7D5



# Sweetspot

The Sweet Spot groups the original color and five complimentary colors.



E7B8E7



FFF0FF



B8B8E7



807780



000000



808080



# Same Dimension

The Same Dimension uses a secret algorithm to generate beautiful new colors.



E7B8E7



FFC2FF



E7B8D0



736773



B300B3



330033



# Inverse Universe

The Inverse Universe completely reimagines the original color for something new.



E7B8E7



FFC2FF



B8E7D0



736773



B300B3

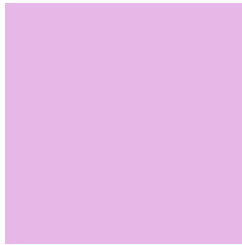


330033



# Previews

## White Background



This preview shows how the Hex color E7B8E7 looks on a white background.

## Color Contrast Check

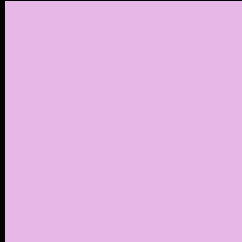
Large Text (above 18pt) WCAG AA × Fail

Any Text WCAG AA × Fail

Large Text (above 18pt) WCAG AAA × Fail

Any Text WCAG AAA × Fail

# Black Background



This preview shows how the Hex color E7B8E7 looks on a black background.

## Color Contrast Check

Large Text (above 18pt) WCAG AA ✓ Pass

Any Text WCAG AA ✓ Pass

Large Text (above 18pt) WCAG AAA ✓ Pass

Any Text WCAG AAA ✓ Pass

If you want to check with other color combinations, try the [Color Contrast Checker](#).



## Hex E7B8E7 Background



This preview shows how black text looks on a background with the Hex color E7B8E7.

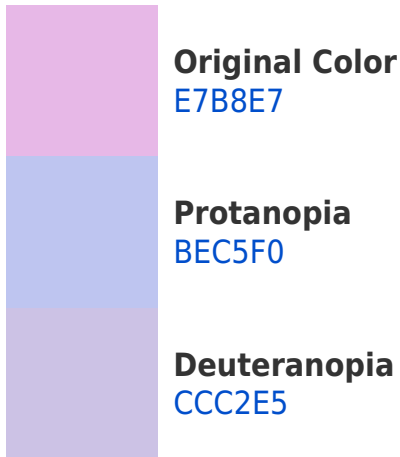


This preview shows how white text looks on a background with the Hex color E7B8E7.

# Color Blindness Simulation

Color vision deficiency is a very complex topic, and I could not describe the different causes any better than Wikipedia does, so if you want to learn more, you should check out their [article about color blindness](#).

## Dichromacy





# Trichromacy



**Original Color**  
E7B8E7



**Protanomaly**  
CDC0ED



**Deuteranomaly**  
D6BEE6

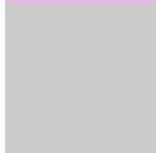


**Tritanomaly**  
E4BBD6

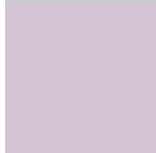
# Monochromacy



**Original Color**  
E7B8E7



**Achromatopsia**  
CBCBCB



**Achromatomaly**  
D5C4D5

# CSS Examples

## Text

The CSS property to change the color of the text to Hex E7B8E7 is called "color". The color property can be set on classes, ids or directly on the HTML element.

This example shows how text in the color #E7B8E7 looks like.

```
.text, #text, p{  
    color:#E7B8E7  
}
```

If you want to add a text shadow in that color use the text-shadow property, you can generate a text shadow directly with our [CSS Text Shadow Generator](#).

Here you see how black text with a 4 pixel #E7B8E7 colored shadow looks like.

```
.shadow{ text-shadow: 4px 4px 2px #E7B8E7
}
```

## Border

The CSS property to change the border of an element to Hex E7B8E7 is called "border". The border property can be set on classes, ids or directly on the HTML element.

This example shows the color as border, it can be applied via the CSS property "border" or "border-color".

```
.border, #border, table{ border:4px solid
#E7B8E7 }
```

If only the border color should be changed use the property `border-color`.

```
.border{ border-color:#E7B8E7 }
```

If you want to add a box shadow in that color use:

Here you see how a box with a 4 pixel #E7B8E7 colored shadow looks like.

```
.boxshadow{ -moz-box-shadow:4px 4px 4px  
4px #E7B8E7; -webkit-box-shadow:4px 4px  
4px 4px #E7B8E7; box-shadow:4px 4px 4px  
4px #E7B8E7 }
```

# Background

The CSS property to change the background color of an element to Hex E7B8E7 is called "background". The background property can be set on classes, ids or directly on the HTML element.

```
.background, #background, body{  
background:#E7B8E7 }
```

If only the background color should be changed can be used:

```
.background{ background-color:#E7B8E7 }
```

This example shows the color as background, it is applied via the CSS property "background".

To optimize and compress your CSS code, you can use our [online CSS compressor and optimizer](#) based on csstidy. If you want to create a linear or radial gradient as background or border, check our [CSS Gradient Generator](#).



Hey! You found this booklet interesting? Support Converting Colors with the new Membership Option!

The pro membership hides all ads, plus gives you double the colors in the color bucket, and more awesome pro features!

**[Learn more, Memberships starting at \\$2.50/m!](#)**

**Follow me  
on Twitter!**

@ConvertingColor