

Converting Colors

Hex(E7BBB1)

Have a look what the booklet for
Hex(E7BBB1) contains.

Hex(E7BBB1)	3
<i>Conversions</i>	4
<i>Details</i>	6
<i>Harmonies</i>	11
<i>Previews</i>	23
<i>Color Blindness Simulation</i>	26
<i>CSS Examples</i>	29

Color

Hex(E7BBB1)

Conversions

Conversions Part 1

Format	Color
Hex	E7BBB1
RGB	231, 187, 177
RGB Percent	91%, 73%, 69%
CMY	0.0941, 0.2667, 0.3059
CMYK	0.00, 0.19, 0.23, 0.09
HSL	11°, 53%, 80%
HSV	11°, 23%, 91%
XYZ	58.6611, 55.7039, 49.2551
YIQ	199.0160, 29.4340, 6.2180

Conversions

Conversions Part 2

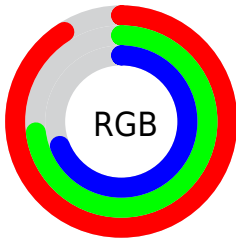
Format	Color
R _Y B	231, 189, 177
Decimal	15186865
CIE Lab	79.44, 14.30, 11.03
CIE LCh	79, 18.062, 37.639
Yxy	55.7039, 0.3585, 0.3404
Android (android.graphics.Color)	4293376945 (0xFFE7BBB1)
YUV	199.0160, -10.8539, 28.0500
Hunter-Lab	74.6350, 9.6849, 13.1163

Details

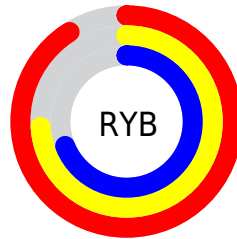
The Hex color **E7BBB1** is a light color, and the websafe version is hex **FFCCCC**. A complement of this color would be **B1DDE7**, and the grayscale version is **C7C7C7**.

A 20% lighter version of the original color is **FFF3E9**, and **AF867C** is the 20% darker color. If you saturate the color by 10%, you get **E7A89A**, and if you desaturate by 10%, it is **E7CEC8**.

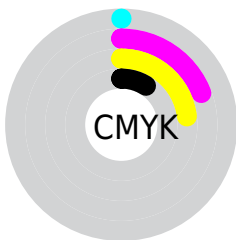
Distribution



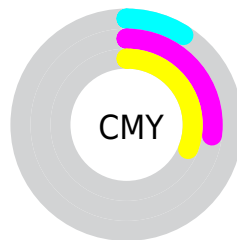
- Red (91%)
- Green (73%)
- Blue (69%)



- Red (91%)
- Yellow (74%)
- Blue (69%)



- Cyan (0%)
- Magenta (19%)
- Yellow (23%)
- Black (9%)



- Cyan (9%)
- Magenta (27%)
- Yellow (31%)

Brightness & Saturation Gradients

These gradients show how the Hex color E7BBB1 changes by changing the brightness by 10 percent. The first figure shows a shift by +10% for each color and the second figure -10%.

Similar to the brightness gradients but the following saturation gradients show a change of the Hex color E7BBB1 by changing the saturation by 10% instead.

 E7BBB1

 E7BBB1

FFFFFF

 CAA096

 FFF3E9

 AF867C

 936C64

 79544C

 5F3D35

 472720

 2F1208

 180001

 000000

 E7BBB1

 E7BBB1

 E7A89A

 E7CEC8

 E79583

 E7E1DF

 E7836C

 E7F3F6

 E77055

 E7FFFF

 E75D3E

 E74A26

 E7370F

 E72B00

Harmonies

Analogous

The Analogous color harmony consists of three colors that are next to each other on the color wheel.



E8B9C1



E7BBB1



DEBFA6

Triad

The Triadic color harmony groups three colors that are evenly spaced from another and form a triangle on the color wheel.



E7BBB1



A8CEB8



B8C5E6

Complementary

The Complementary color scheme is a pair of colors which are on the opposite of each other on the color wheel.



E7BBB1



B1DDE7

Split Complementary

Split-complementary colors differ from the complementary color scheme. The scheme consists of three colors, the original color and two neighbors of the complement color.



A4CAE3



E7BBB1



9BCFC9

Square

The Square scheme is like the rectangle color scheme, but the four colors are evenly spaced on the color wheel.



E7BBB1



BBCAAA



99CED9



CDBFDF

Rectangle

The Rectangle color scheme consists of four colors that form a rectangle on the color wheel.



E7BBB1



D4C3A3



99CED9



B1C7E6

Sweetspot

The Sweet Spot groups the original color and five complimentary colors.



E7BBB1



FFF0ED



E7B1DD



807775



000000



808080

Same Dimension

The Same Dimension uses a secret algorithm to generate beautiful new colors.



E7BBB1



FFC5B8



E7D6B1



736967



B32100



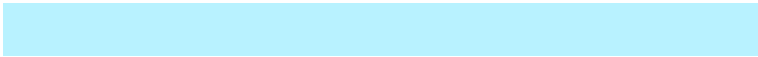
330900

Inverse Universe

The Inverse Universe completely reimagines the original color for something new.



B1DDE7



B8F2FF



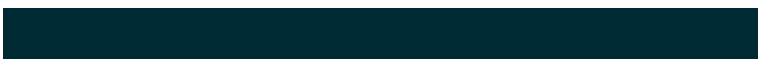
B1C2E7



677173



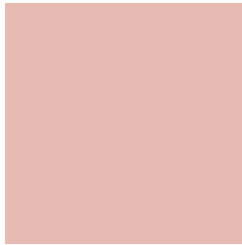
0091B3



002A33

Previews

White Background



This preview shows how the Hex color E7BBB1 looks on a white background.

Color Contrast Check

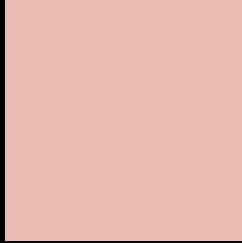
Large Text (above 18pt) WCAG AA × Fail

Any Text WCAG AA × Fail

Large Text (above 18pt) WCAG AAA × Fail

Any Text WCAG AAA × Fail

Black Background



This preview shows how the Hex color E7BBB1 looks on a black background.

Color Contrast Check

Large Text (above 18pt) WCAG AA ✓ Pass

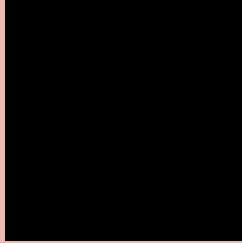
Any Text WCAG AA ✓ Pass

Large Text (above 18pt) WCAG AAA ✓ Pass

Any Text WCAG AAA ✓ Pass

If you want to check with other color combinations, try the [Color Contrast Checker](#).

Hex E7BBB1 Background



This preview shows how black text looks on a background with the Hex color E7BBB1.



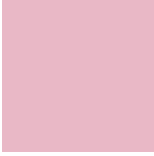
This preview shows how white text looks on a background with the Hex color E7BBB1.

Color Blindness Simulation

Color vision deficiency is a very complex topic, and I could not describe the different causes any better than Wikipedia does, so if you want to learn more, you should check out their [article about color blindness](#).

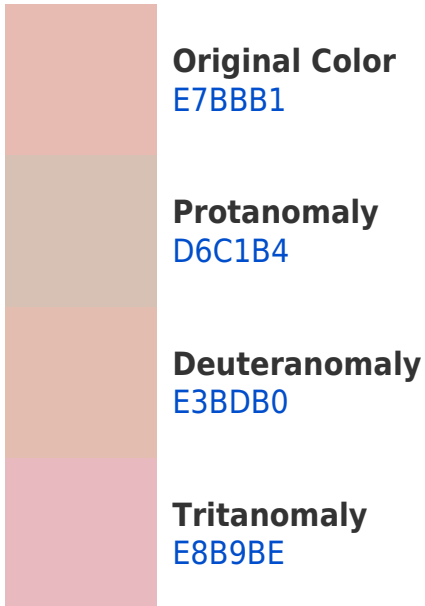
Dichromacy



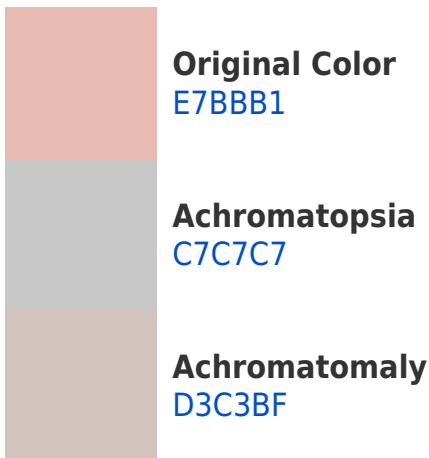


Tritanopia
E9B8C6

Trichromacy



Monochromacy



CSS Examples

Text

The CSS property to change the color of the text to Hex E7BBB1 is called "color". The color property can be set on classes, ids or directly on the HTML element.

This example shows how text in the color #E7BBB1 looks like.

```
.text, #text, p{  
    color:#E7BBB1  
}
```

If you want to add a text shadow in that color use the text-shadow property, you can generate a text shadow directly with our [CSS Text Shadow Generator](#).

Here you see how black text with a 4 pixel #E7BBB1 colored shadow looks like.

```
.shadow{ text-shadow: 4px 4px 2px #E7BBB1
}
```

Border

The CSS property to change the border of an element to Hex E7BBB1 is called "border". The border property can be set on classes, ids or directly on the HTML element.

This example shows the color as border, it can be applied via the CSS property "border" or "border-color".

```
.border, #border, table{ border:4px solid
#E7BBB1 }
```

If only the border color should be changed use the property `border-color`.

```
.border{ border-color:#E7BBB1 }
```

If you want to add a box shadow in that color use:

Here you see how a box with a 4 pixel #E7BBB1 colored shadow looks like.

```
.boxshadow{ -moz-box-shadow:4px 4px 4px  
4px #E7BBB1; -webkit-box-shadow:4px 4px  
4px 4px #E7BBB1; box-shadow:4px 4px 4px  
4px #E7BBB1 }
```

Background

The CSS property to change the background color of an element to Hex E7BBB1 is called "background". The background property can be set on classes, ids or directly on the HTML element.

```
.background, #background, body{  
background:#E7BBB1 }
```

If only the background color should be changed can be used:

```
.background{ background-color:#E7BBB1 }
```

This example shows the color as background, it is applied via the CSS property "background".

To optimize and compress your CSS code, you can use our [online CSS compressor and optimizer](#) based on csstidy. If you want to create a linear or radial gradient as background or border, check our [CSS Gradient Generator](#).

Hey! You found this booklet interesting? Support Converting Colors with the new Membership Option!

The pro membership hides all ads, plus gives you double the colors in the color bucket, and more awesome pro features!

[Learn more, Memberships starting at \\$2.50/m!](#)

**Follow me
on Twitter!**

@ConvertingColor