

# Converting Colors

Hex(E7BFB3)

Have a look what the booklet for  
Hex(E7BFB3) contains.

|  |    |
|--|----|
| <b>Hex(E7BFB3)</b> .....                       | 3  |
| <i><b>Conversions</b></i> .....                | 4  |
| <i><b>Details</b></i> .....                    | 6  |
| <i><b>Harmonies</b></i> .....                  | 11 |
| <i><b>Previews</b></i> .....                   | 23 |
| <i><b>Color Blindness Simulation</b></i> ..... | 26 |
| <i><b>CSS Examples</b></i> .....               | 29 |

# **Color**

**Hex(E7BFB3)**

# Conversions

## Conversions Part 1

| Format      | Color                     |
|-------------|---------------------------|
| Hex         | E7BFB3                    |
| RGB         | 231, 191, 179             |
| RGB Percent | 91%, 75%, 70%             |
| CMY         | 0.0941, 0.2510, 0.2980    |
| CMYK        | 0.00, 0.17, 0.23, 0.09    |
| HSL         | 14°, 52%, 80%             |
| HSV         | 14°, 23%, 91%             |
| XYZ         | 59.7225, 57.5052, 50.5997 |
| YIQ         | 201.5920, 27.6920, 4.7480 |

# Conversions

## Conversions Part 2

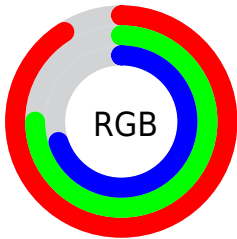
| Format                              | Color  |
|-------------------------------------|--|
| <a href="#">RYB</a>                 | <a href="#">231, 195, 179</a>                                |
| Decimal                             | <a href="#">15187891</a>                                     |
| CIELab                              | <a href="#">80.46, 12.47, 11.40</a>                          |
| CIELCh                              | <a href="#">80, 16.894, 42.441</a>                           |
| Yxy                                 | <a href="#">57.5052, 0.3559, 0.3426</a>                      |
| Android<br>(android.graphics.Color) | <a href="#">4293377971</a><br>( <a href="#">0xFFE7BFB3</a> ) |
| YUV                                 | <a href="#">201.5920, -11.1379, 25.7908</a>                  |
| Hunter-Lab                          | <a href="#">75.8322, 7.8733, 13.5207</a>                     |

# Details

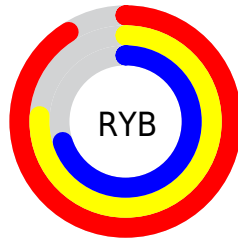
The Hex color **E7BFB3** is a light color, and the websafe version is hex **FFCCCC**. A complement of this color would be **B3DBE7**, and the grayscale version is **CACACA**.

A 20% lighter version of the original color is **FFF7EB**, and **AF8A7E** is the 20% darker color. If you saturate the color by 10%, you get **E7AD9C**, and if you desaturate by 10%, it is **E7D1CA**.

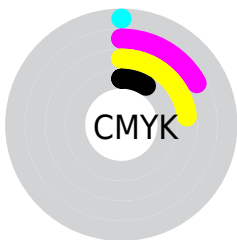
# Distribution



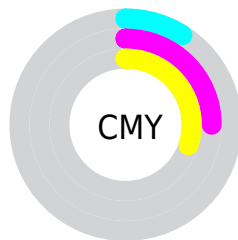
- Red (91%)
- Green (75%)
- Blue (70%)



- Red (91%)
- Yellow (76%)
- Blue (70%)



- Cyan (0%)
- Magenta (17%)
- Yellow (23%)
- Black (9%)



- Cyan (9%)
- Magenta (25%)
- Yellow (30%)

# Brightness & Saturation Gradients

These gradients show how the Hex color E7BFB3 changes by changing the brightness by 10 percent. The first figure shows a shift by +10% for each color and the second figure -10%.

Similar to the brightness gradients but the following saturation gradients show a change of the Hex color E7BFB3 by changing the saturation by 10% instead.



 E7BFB3

FFFFFF

 FFF7EB

 E7BFB3

 CBA498

 AF8A7E

 947065


 79584D

 604037

 472A21

 30150B

 1B0000

 000000

 E7BFB3

 E7BFB3

 E7AD9C

 E7D1CA

 E79B85

 E7E3E1

 E78A6E

 E7F4F8

 E77857

 E7FFFF

 E7663F

 E75428

 E74311

 E73500

# Harmonies

## Analogous

The Analogous color harmony consists of three colors that are next to each other on the color wheel.



E9BDC1



E7BFB3



DDC3AA

# Triad

The Triadic color harmony groups three colors that are evenly spaced from another and form a triangle on the color wheel.



E7BFB3



ABD0BE



BFC7E6

# Complementary

The Complementary color scheme is a pair of colors which are on the opposite of each other on the color wheel.



E7BFB3



B3DBE7

# Split Complementary

Split-complementary colors differ from the complementary color scheme. The scheme consists of three colors, the original color and two neighbors of the complement color.



ACCCE5



E7BFB3



A0D1CE

# Square

The Square scheme is like the rectangle color scheme, but the four colors are evenly spaced on the color wheel.



E7BFB3



BBCDB0



A0CFDC



D3C2DF

# Rectangle

The Rectangle color scheme consists of four colors that form a rectangle on the color wheel.



E7BFB3



D3C7A8



A0CFDC



B8C9E7



# Sweetspot

The Sweet Spot groups the original color and five complimentary colors.



E7BFB3



FFF1ED



E7B3DC



807875



000000



808080



# Same Dimension

The Same Dimension uses a secret algorithm to generate beautiful new colors.



E7BFB3



FFCABA



E7D8B3



736A67



B32900



330C00

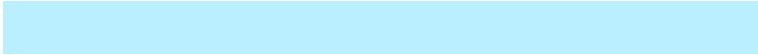


# Inverse Universe

The Inverse Universe completely reimagines the original color for something new.



B3DBE7



BAEFFF



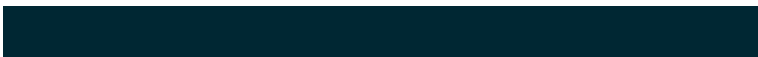
B3C2E7



677073



0089B3

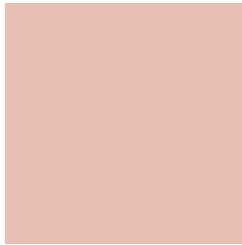


002733



# Previews

## White Background



This preview shows how the Hex color E7BFB3 looks on a white background.

## Color Contrast Check

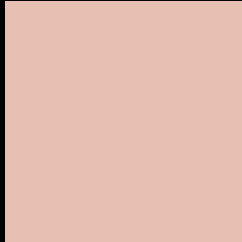
Large Text (above 18pt) WCAG AA × Fail

Any Text WCAG AA × Fail

Large Text (above 18pt) WCAG AAA × Fail

Any Text WCAG AAA × Fail

# Black Background



This preview shows how the Hex color E7BFB3 looks on a black background.

## Color Contrast Check

Large Text (above 18pt) WCAG AA ✓ Pass

Any Text WCAG AA ✓ Pass

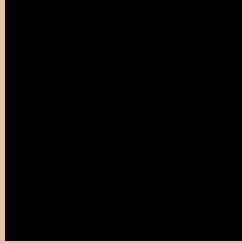
Large Text (above 18pt) WCAG AAA ✓ Pass

Any Text WCAG AAA ✓ Pass

If you want to check with other color combinations, try the [Color Contrast Checker](#).



## Hex E7BFB3 Background



This preview shows how black text looks on a background with the Hex color E7BFB3.

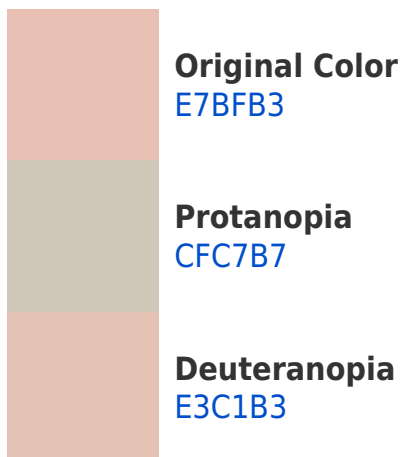


This preview shows how white text looks on a background with the Hex color E7BFB3.

# Color Blindness Simulation

Color vision deficiency is a very complex topic, and I could not describe the different causes any better than Wikipedia does, so if you want to learn more, you should check out their [article about color blindness](#).

## Dichromacy





# Trichromacy



**Original Color**  
E7BFB3

**Protanomaly**  
D8C4B6

**Deuteranomaly**  
E4C0B3

**Tritanomaly**  
E9BDC2

# Monochromacy



**Original Color**  
E7BFB3

**Achromatopsia**  
CACACA

**Achromatomaly**  
D5C6C2

# CSS Examples

## Text

The CSS property to change the color of the text to Hex E7BFB3 is called "color". The color property can be set on classes, ids or directly on the HTML element.

This example shows how text in the color #E7BFB3 looks like.

```
.text, #text, p{  
    color:#E7BFB3  
}
```

If you want to add a text shadow in that color use the text-shadow property, you can generate a text shadow directly with our [CSS Text Shadow Generator](#).

Here you see how black text with a 4 pixel #E7BFB3 colored shadow looks like.

```
.shadow{ text-shadow: 4px 4px 2px #E7BFB3
}
```

## Border

The CSS property to change the border of an element to Hex E7BFB3 is called "border". The border property can be set on classes, ids or directly on the HTML element.

This example shows the color as border, it can be applied via the CSS property "border" or "border-color".

```
.border, #border, table{ border:4px solid
#E7BFB3 }
```

If only the border color should be changed use the property `border-color`.

```
.border{ border-color:#E7BFB3 }
```

If you want to add a box shadow in that color use:

Here you see how a box with a 4 pixel #E7BFB3 colored shadow looks like.

```
.boxshadow{ -moz-box-shadow:4px 4px 4px  
4px #E7BFB3; -webkit-box-shadow:4px 4px  
4px 4px #E7BFB3; box-shadow:4px 4px 4px  
4px #E7BFB3 }
```

# Background

The CSS property to change the background color of an element to Hex E7BFB3 is called "background". The background property can be set on classes, ids or directly on the HTML element.

```
.background, #background, body{  
background:#E7BFB3 }
```

If only the background color should be changed can be used:

```
.background{ background-color:#E7BFB3 }
```

This example shows the color as background, it is applied via the CSS property "background".

To optimize and compress your CSS code, you can use our [online CSS compressor and optimizer](#) based on csstidy. If you want to create a linear or radial gradient as background or border, check our [CSS Gradient Generator](#).



Hey! You found this booklet interesting? Support Converting Colors with the new Membership Option!

The pro membership hides all ads, plus gives you double the colors in the color bucket, and more awesome pro features!

**[Learn more, Memberships starting at \\$2.50/m!](#)**

**Follow me  
on Twitter!**

@ConvertingColor