

# Converting Colors

Hex(E7C1AE)

Have a look what the booklet for  
Hex(E7C1AE) contains.

<b>Hex(E7C1AE)</b> .....	3
<b><i>Conversions</i></b> .....	4
<b><i>Details</i></b> .....	6
<b><i>Harmonies</i></b> .....	11
<b><i>Previews</i></b> .....	23
<b><i>Color Blindness Simulation</i></b> .....	26
<b><i>CSS Examples</i></b> .....	29

# **Color**

**Hex(E7C1AE)**

# Conversions

## Conversions Part 1

Format	Color
Hex	E7C1AE
RGB	231, 193, 174
RGB Percent	91%, 76%, 68%
CMY	0.0941, 0.2431, 0.3176
CMYK	0.00, 0.16, 0.25, 0.09
HSL	20°, 54%, 79%
HSV	20°, 25%, 91%
XYZ	59.6649, 58.1848, 48.1305
YIQ	202.1960, 28.7470, 2.1470

# Conversions

## Conversions Part 2

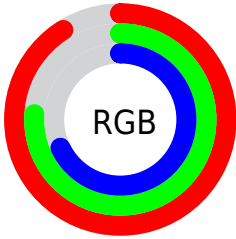
Format	Color
R <sub>Y</sub> B	231, 203, 174
Decimal	15188398
CIE Lab	80.84, 10.70, 14.62
CIE LCh	81, 18.112, 53.797
Yxy	58.1848, 0.3595, 0.3506
Android (android.graphics.Color)	4293378478 (0xFFE7C1AE)
YUV	202.1960, -13.9006, 25.2611
Hunter-Lab	76.2790, 6.1333, 15.9845

# Details

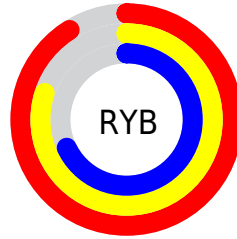
The Hex color **E7C1AE** is a light color, and the websafe version is hex **FFCCCC**. A complement of this color would be **AED4E7**, and the grayscale version is **CACACA**.

A 20% lighter version of the original color is **FFF9E5**, and **AF8B7A** is the 20% darker color. If you saturate the color by 10%, you get **E7B297**, and if you desaturate by 10%, it is **E7D0C5**.

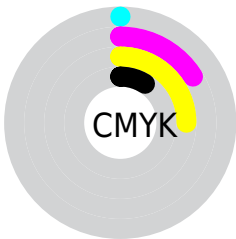
# Distribution



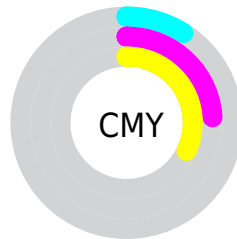
- Red (91%)
- Green (76%)
- Blue (68%)



- Red (91%)
- Yellow (80%)
- Blue (68%)



- Cyan (0%)
- Magenta (16%)
- Yellow (25%)
- Black (9%)



- Cyan (9%)
- Magenta (24%)
- Yellow (32%)

# Brightness & Saturation Gradients

These gradients show how the Hex color E7C1AE changes by changing the brightness by 10 percent. The first figure shows a shift by +10% for each color and the second figure -10%.

Similar to the brightness gradients but the following saturation gradients show a change of the Hex color E7C1AE by changing the saturation by 10% instead.



 E7C1AE

 E7C1AE

FFFFFF

 CBA693

 FFF9E5

 AF8B7A

 947261

 795949

 604232

 472C1D

 301704

 190000

 000000

 E7C1AE

 E7C1AE

 E7B297

 E7D0C5

 E7A280

 E7E0DC

 E79369

 E7EFF3

 E78352

 E7FFFF

 E7743B

 E76523

 E7550C

 E74D00

# Harmonies

## Analogous

The Analogous color harmony consists of three colors that are next to each other on the color wheel.



EDBEBC



E7C1AE



DAC6A7

# Triad

The Triadic color harmony groups three colors that are evenly spaced from another and form a triangle on the color wheel.



E7C1AE



A4D2C4



C7C6E8

# Complementary

The Complementary color scheme is a pair of colors which are on the opposite of each other on the color wheel.



E7C1AE



AED4E7

# Split Complementary

Split-complementary colors differ from the complementary color scheme. The scheme consists of three colors, the original color and two neighbors of the complement color.



B2CBEA



E7C1AE



9CD2D6

# Square

The Square scheme is like the rectangle color scheme, but the four colors are evenly spaced on the color wheel.



E7C1AE



B4D0B4



A1D0E3



DCC0DD

# Rectangle

The Rectangle color scheme consists of four colors that form a rectangle on the color wheel.



E7C1AE



CECAA8



A1D0E3



C0C7E9



# Sweetspot

The Sweet Spot groups the original color and five complimentary colors.



E7C1AE



FFF3ED



E7AED4



807975



000000



808080



# Same Dimension

The Same Dimension uses a secret algorithm to generate beautiful new colors.



E7C1AE



FFCCB3



E7DDAE



736B67



B33B00



331100

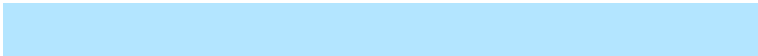


# Inverse Universe

The Inverse Universe completely reimagines the original color for something new.



AED4E7



B3E5FF



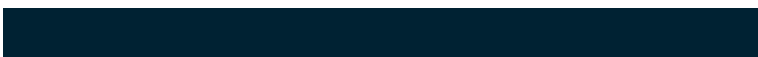
AEB8E7



676F73



0077B3

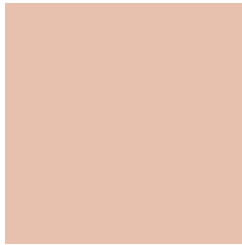


002233



# Previews

## White Background



This preview shows how the Hex color E7C1AE looks on a white background.

## Color Contrast Check

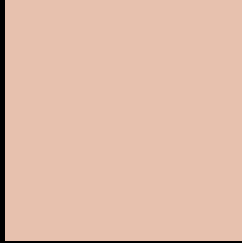
Large Text (above 18pt) WCAG AA × Fail

Any Text WCAG AA × Fail

Large Text (above 18pt) WCAG AAA × Fail

Any Text WCAG AAA × Fail

# Black Background



This preview shows how the Hex color E7C1AE looks on a black background.

## Color Contrast Check

Large Text (above 18pt) WCAG AA ✓ Pass

Any Text WCAG AA ✓ Pass

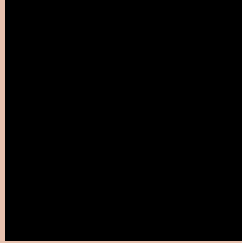
Large Text (above 18pt) WCAG AAA ✓ Pass

Any Text WCAG AAA ✓ Pass

If you want to check with other color combinations, try the [Color Contrast Checker](#).



## Hex E7C1AE Background



This preview shows how black text looks on a background with the Hex color E7C1AE.

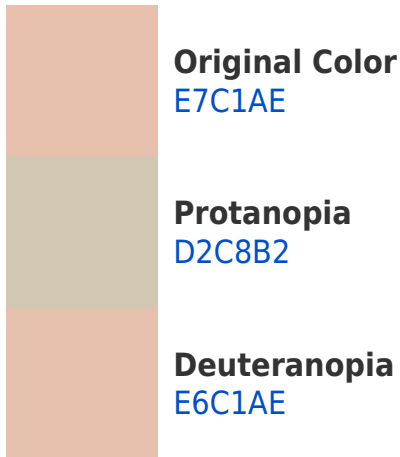


This preview shows how white text looks on a background with the Hex color E7C1AE.

# Color Blindness Simulation

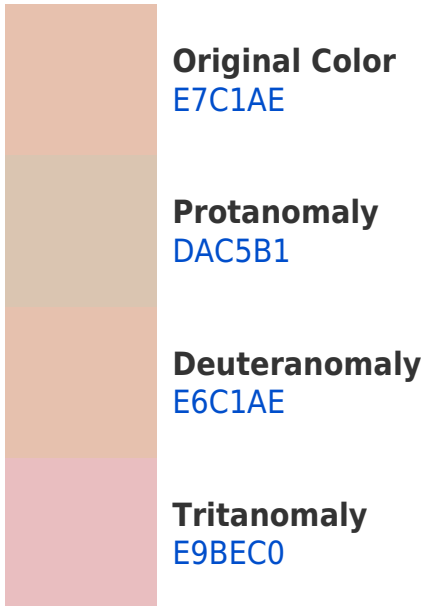
Color vision deficiency is a very complex topic, and I could not describe the different causes any better than Wikipedia does, so if you want to learn more, you should check out their [article about color blindness](#).

## Dichromacy

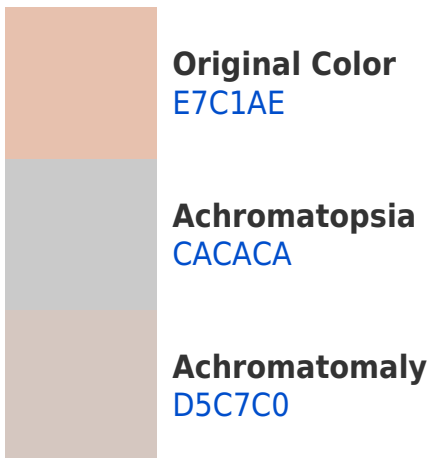




# Trichromacy



# Monochromacy



# CSS Examples

## Text

The CSS property to change the color of the text to Hex E7C1AE is called "color". The color property can be set on classes, ids or directly on the HTML element.

This example shows how text in the color #E7C1AE looks like.

```
.text, #text, p{  
    color:#E7C1AE  
}
```

If you want to add a text shadow in that color use the text-shadow property, you can generate a text shadow directly with our [CSS Text Shadow Generator](#).

Here you see how black text with a 4 pixel #E7C1AE colored shadow looks like.

```
.shadow{ text-shadow: 4px 4px 2px #E7C1AE
}
```

## Border

The CSS property to change the border of an element to Hex E7C1AE is called "border". The border property can be set on classes, ids or directly on the HTML element.

This example shows the color as border, it can be applied via the CSS property "border" or "border-color".

```
.border, #border, table{ border:4px solid
#E7C1AE }
```

If only the border color should be changed use the property `border-color`.

```
.border{ border-color:#E7C1AE }
```

If you want to add a box shadow in that color use:

Here you see how a box with a 4 pixel #E7C1AE colored shadow looks like.

```
.boxshadow{ -moz-box-shadow:4px 4px 4px  
4px #E7C1AE; -webkit-box-shadow:4px 4px  
4px 4px #E7C1AE; box-shadow:4px 4px 4px  
4px #E7C1AE }
```

# Background

The CSS property to change the background color of an element to Hex E7C1AE is called "background". The background property can be set on classes, ids or directly on the HTML element.

```
.background, #background, body{  
background:#E7C1AE }
```

If only the background color should be changed can be used:

```
.background{ background-color:#E7C1AE }
```

This example shows the color as background, it is applied via the CSS property "background".

To optimize and compress your CSS code, you can use our [online CSS compressor and optimizer](#) based on csstidy. If you want to create a linear or radial gradient as background or border, check our [CSS Gradient Generator](#).



Hey! You found this booklet interesting? Support Converting Colors with the new Membership Option!

The pro membership hides all ads, plus gives you double the colors in the color bucket, and more awesome pro features!

**[Learn more, Memberships starting at \\$2.50/m!](#)**

**Follow me  
on Twitter!**

@ConvertingColor