

Converting Colors

Hex(E7C1B2)

Have a look what the booklet for
Hex(E7C1B2) contains.

Hex(E7C1B2)	3
<i>Conversions</i>	4
<i>Details</i>	6
<i>Harmonies</i>	11
<i>Previews</i>	23
<i>Color Blindness Simulation</i>	26
<i>CSS Examples</i>	29

Color

Hex(E7C1B2)

Conversions

Conversions Part 1

Format	Color
Hex	E7C1B2
RGB	231, 193, 178
RGB Percent	91%, 76%, 70%
CMY	0.0941, 0.2431, 0.3020
CMYK	0.00, 0.16, 0.23, 0.09
HSL	17°, 52%, 80%
HSV	17°, 23%, 91%
XYZ	60.0608, 58.3432, 50.2153
YIQ	202.6520, 27.4630, 3.3910

Conversions

Conversions Part 2

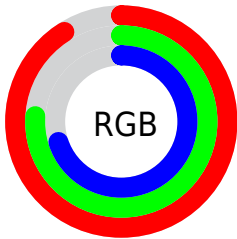
Format	Color
R _Y B	231, 199, 178
Decimal	15188402
CIE Lab	80.93, 11.26, 12.60
CIE LCh	81, 16.900, 48.198
Yxy	58.3432, 0.3562, 0.3460
Android (android.graphics.Color)	4293378482 (0xFFE7C1B2)
YUV	202.6520, -12.1534, 24.8612
Hunter-Lab	76.3827, 6.6874, 14.4897

Details

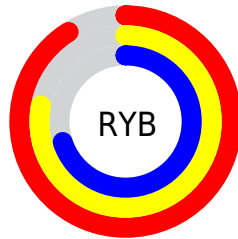
The Hex color **E7C1B2** is a light color, and the websafe version is hex **FFCCCC**. A complement of this color would be **B2D8E7**, and the grayscale version is **CBCBCB**.

A 20% lighter version of the original color is **FFF9EA**, and **AF8B7D** is the 20% darker color. If you saturate the color by 10%, you get **E7B09B**, and if you desaturate by 10%, it is **E7D2C9**.

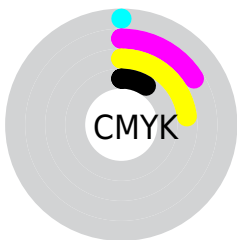
Distribution



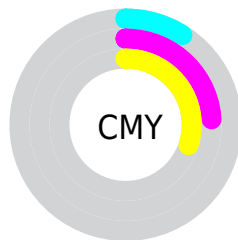
- Red (91%)
- Green (76%)
- Blue (70%)



- Red (91%)
- Yellow (78%)
- Blue (70%)



- Cyan (0%)
- Magenta (16%)
- Yellow (23%)
- Black (9%)



- Cyan (9%)
- Magenta (24%)
- Yellow (30%)

Brightness & Saturation Gradients

These gradients show how the Hex color E7C1B2 changes by changing the brightness by 10 percent. The first figure shows a shift by +10% for each color and the second figure -10%.

Similar to the brightness gradients but the following saturation gradients show a change of the Hex color E7C1B2 by changing the saturation by 10% instead.

 E7C1B2

 E7C1B2

FFFFFF

 CBA697

 FFF9EA

 AF8B7D

 947264

 79594C

 604236

 472C20

 30170A

 1A0000

 000000

 E7C1B2

 E7C1B2

 E7B09B

 E7D2C9

 E7A084

 E7E2E0

 E78F6D

 E7F3F7

 E77F56

 E7FFFF

 E76E3F

 E75E27

 E74D10

 E74100

Harmonies

Analogous

The Analogous color harmony consists of three colors that are next to each other on the color wheel.



EBBEC0



E7C1B2



DCC6AA

Triad

The Triadic color harmony groups three colors that are evenly spaced from another and form a triangle on the color wheel.



E7C1B2



A9D2C2



C4C7E7

Complementary

The Complementary color scheme is a pair of colors which are on the opposite of each other on the color wheel.



E7C1B2



B2D8E7

Split Complementary

Split-complementary colors differ from the complementary color scheme. The scheme consists of three colors, the original color and two neighbors of the complement color.



B0CCE7



E7C1B2



A0D2D2

Square

The Square scheme is like the rectangle color scheme, but the four colors are evenly spaced on the color wheel.



E7C1B2



B9CFB4



A3D0E0



D7C2DE

Rectangle

The Rectangle color scheme consists of four colors that form a rectangle on the color wheel.



E7C1B2



D1C9AA



A3D0E0



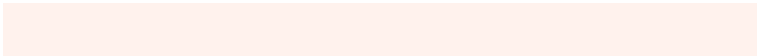
BDC9E8

Sweetspot

The Sweet Spot groups the original color and five complimentary colors.



E7C1B2



FFF2ED



E7B2D9



807875



000000



808080

Same Dimension

The Same Dimension uses a secret algorithm to generate beautiful new colors.



E7C1B2



FFCCB8



E7DBB2



736B67



B33300



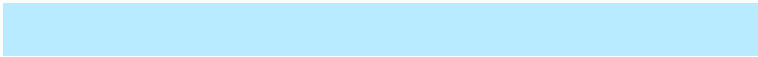
330E00

Inverse Universe

The Inverse Universe completely reimagines the original color for something new.



B2D8E7



B8EBFF



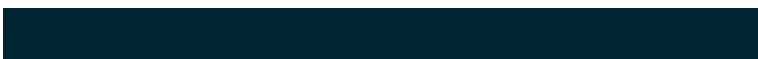
B2BEE7



677073



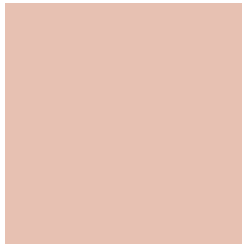
0080B3



002533

Previews

White Background



This preview shows how the Hex color E7C1B2 looks on a white background.

Color Contrast Check

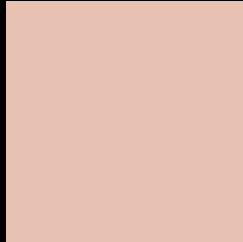
Large Text (above 18pt) WCAG AA × Fail

Any Text WCAG AA × Fail

Large Text (above 18pt) WCAG AAA × Fail

Any Text WCAG AAA × Fail

Black Background



This preview shows how the Hex color E7C1B2 looks on a black background.

Color Contrast Check

Large Text (above 18pt) WCAG AA ✓ Pass

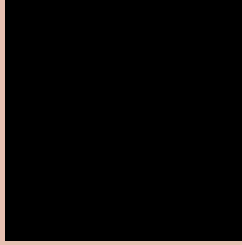
Any Text WCAG AA ✓ Pass

Large Text (above 18pt) WCAG AAA ✓ Pass

Any Text WCAG AAA ✓ Pass

If you want to check with other color combinations, try the [Color Contrast Checker](#).

Hex E7C1B2 Background



This preview shows how black text looks on a background with the Hex color E7C1B2.

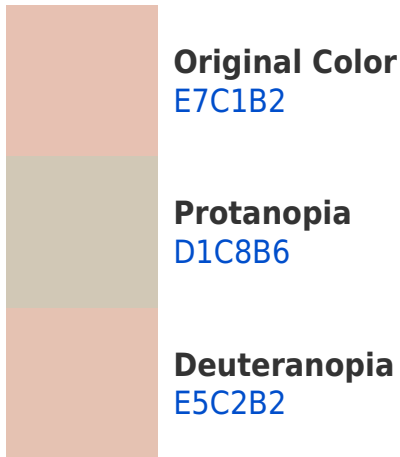


This preview shows how white text looks on a background with the Hex color E7C1B2.

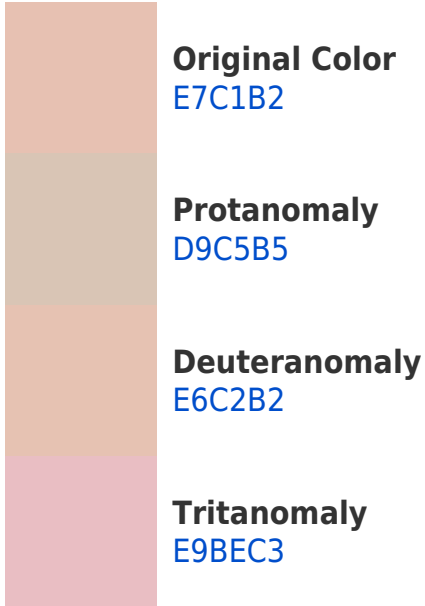
Color Blindness Simulation

Color vision deficiency is a very complex topic, and I could not describe the different causes any better than Wikipedia does, so if you want to learn more, you should check out their [article about color blindness](#).

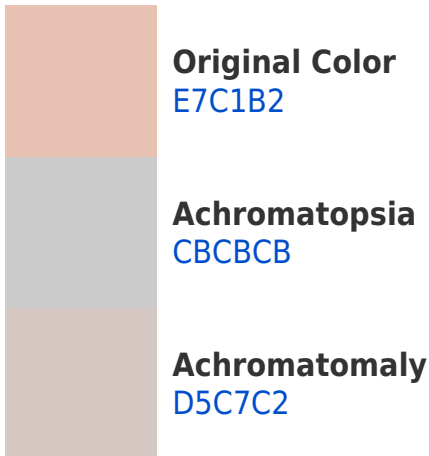
Dichromacy



Trichromacy



Monochromacy



CSS Examples

Text

The CSS property to change the color of the text to Hex E7C1B2 is called "color". The color property can be set on classes, ids or directly on the HTML element.

This example shows how text in the color #E7C1B2 looks like.

```
.text, #text, p{  
    color:#E7C1B2  
}
```

If you want to add a text shadow in that color use the text-shadow property, you can generate a text shadow directly with our [CSS Text Shadow Generator](#).

Here you see how black text with a 4 pixel #E7C1B2 colored shadow looks like.

```
.shadow{ text-shadow: 4px 4px 2px #E7C1B2
}
```

Border

The CSS property to change the border of an element to Hex E7C1B2 is called "border". The border property can be set on classes, ids or directly on the HTML element.

This example shows the color as border, it can be applied via the CSS property "border" or "border-color".

```
.border, #border, table{ border:4px solid
#E7C1B2 }
```

If only the border color should be changed use the property `border-color`.

```
.border{ border-color:#E7C1B2 }
```

If you want to add a box shadow in that color use:

Here you see how a box with a 4 pixel #E7C1B2 colored shadow looks like.

```
.boxshadow{ -moz-box-shadow:4px 4px 4px  
4px #E7C1B2; -webkit-box-shadow:4px 4px  
4px 4px #E7C1B2; box-shadow:4px 4px 4px  
4px #E7C1B2 }
```

Background

The CSS property to change the background color of an element to Hex E7C1B2 is called "background". The background property can be set on classes, ids or directly on the HTML element.

```
.background, #background, body{  
background:#E7C1B2 }
```

If only the background color should be changed can be used:

```
.background{ background-color:#E7C1B2 }
```

This example shows the color as background, it is applied via the CSS property "background".

To optimize and compress your CSS code, you can use our [online CSS compressor and optimizer](#) based on csstidy. If you want to create a linear or radial gradient as background or border, check our [CSS Gradient Generator](#).

Hey! You found this booklet interesting? Support Converting Colors with the new Membership Option!

The pro membership hides all ads, plus gives you double the colors in the color bucket, and more awesome pro features!

[Learn more, Memberships starting at \\$2.50/m!](#)

**Follow me
on Twitter!**

@ConvertingColor