

Converting Colors

Hex(E7C2BA)

Have a look what the booklet for
Hex(E7C2BA) contains.

Hex(E7C2BA)	3
<i>Conversions</i>	4
<i>Details</i>	6
<i>Harmonies</i>	11
<i>Previews</i>	23
<i>Color Blindness Simulation</i>	26
<i>CSS Examples</i>	29

Color

Hex(E7C2BA)

Conversions

Conversions Part 1

Format	Color
Hex	E7C2BA
RGB	231, 194, 186
RGB Percent	91%, 76%, 73%
CMY	0.0941, 0.2392, 0.2706
CMYK	0.00, 0.16, 0.19, 0.09
HSL	11°, 48%, 82%
HSV	11°, 19%, 91%
XYZ	61.1097, 59.1177, 54.6444
YIQ	204.1510, 24.6200, 5.3560

Conversions

Conversions Part 2

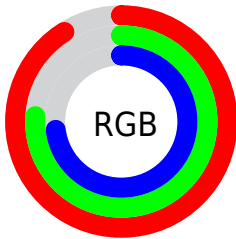
Format	Color
R _Y B	231, 196, 186
Decimal	15188666
CIE Lab	81.36, 11.91, 8.92
CIE LCh	81, 14.877, 36.833
Yxy	59.1177, 0.3495, 0.3381
Android (android.graphics.Color)	4293378746 (0xFFE7C2BA)
YUV	204.1510, -8.9484, 23.5466
Hunter-Lab	76.8880, 7.3157, 11.6841

Details

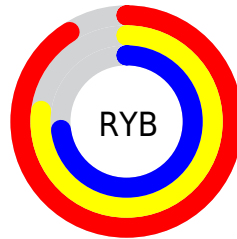
The Hex color **E7C2BA** is a light color, and the websafe version is hex **FFCCCC**. A complement of this color would be **BADFE7**, and the grayscale version is **CCCCCC**.

A 20% lighter version of the original color is **FFBF2**, and **AF8C85** is the 20% darker color. If you saturate the color by 10%, you get **E7AFA3**, and if you desaturate by 10%, it is **E7D5D1**.

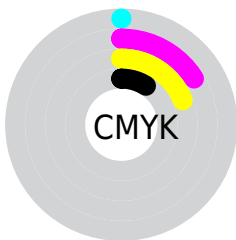
Distribution



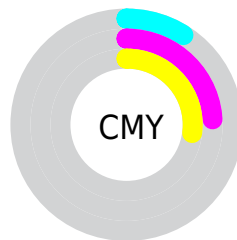
- Red (91%)
- Green (76%)
- Blue (73%)



- Red (91%)
- Yellow (77%)
- Blue (73%)



- Cyan (0%)
- Magenta (16%)
- Yellow (19%)
- Black (9%)



- Cyan (9%)
- Magenta (24%)
- Yellow (27%)

Brightness & Saturation Gradients

These gradients show how the Hex color E7C2BA changes by changing the brightness by 10 percent. The first figure shows a shift by +10% for each color and the second figure -10%.

Similar to the brightness gradients but the following saturation gradients show a change of the Hex color E7C2BA by changing the saturation by 10% instead.

 E7C2BA

 E7C2BA

FFFFFF

 CBA79F

 FFFBF2

 AF8C85

 94736C

 7A5A53

 60433C

 482C27

 301712

 1C0000

 000000

 E7C2BA

 E7C2BA

 E7AFA3

 E7D5D1

 E79C8C

 E7E8E8

 E78975

 E7FBFF

 E7765E

 E7FFFF

 E76346

 E7502F

 E73D18

 E72A01

 E72900

Harmonies

Analogous

The Analogous color harmony consists of three colors that are next to each other on the color wheel.



E7C1C7



E7C2BA



DFC6B1

Triad

The Triadic color harmony groups three colors that are evenly spaced from another and form a triangle on the color wheel.



E7C2BA



B3D1BF



BFCAE5

Complementary

The Complementary color scheme is a pair of colors which are on the opposite of each other on the color wheel.



E7C2BA



BADFE7

Split Complementary

Split-complementary colors differ from the complementary color scheme. The scheme consists of three colors, the original color and two neighbors of the complement color.



AFCFE3



E7C2BA



A9D2CD

Square

The Square scheme is like the rectangle color scheme, but the four colors are evenly spaced on the color wheel.



E7C2BA



C2CEB4



A7D1DA



D1C6E0

Rectangle

The Rectangle color scheme consists of four colors that form a rectangle on the color wheel.



E7C2BA



D7C9AF



A7D1DA



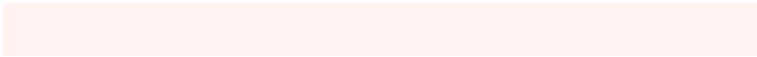
B9CCE6

Sweetspot

The Sweet Spot groups the original color and five complimentary colors.



E7C2BA



FFF2F0



E7BAE0



807877



000000



808080

Same Dimension

The Same Dimension uses a secret algorithm to generate beautiful new colors.



E7C2BA



FFCFC4



E7D8BA



736967



B32000



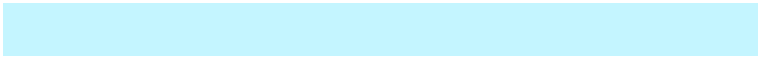
330900

Inverse Universe

The Inverse Universe completely reimagines the original color for something new.



BADFE7



C4F5FF



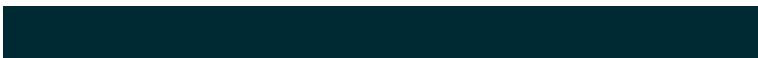
BAC9E7



677173



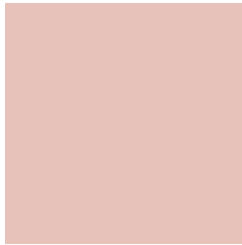
0093B3



002A33

Previews

White Background



This preview shows how the Hex color E7C2BA looks on a white background.

Color Contrast Check

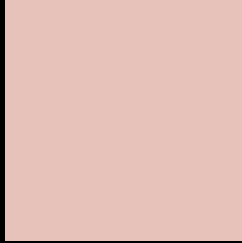
Large Text (above 18pt) WCAG AA × Fail

Any Text WCAG AA × Fail

Large Text (above 18pt) WCAG AAA × Fail

Any Text WCAG AAA × Fail

Black Background



This preview shows how the Hex color E7C2BA looks on a black background.

Color Contrast Check

Large Text (above 18pt) WCAG AA ✓ Pass

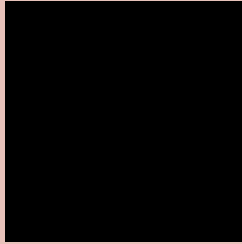
Any Text WCAG AA ✓ Pass

Large Text (above 18pt) WCAG AAA ✓ Pass

Any Text WCAG AAA ✓ Pass

If you want to check with other color combinations, try the [Color Contrast Checker](#).

Hex E7C2BA Background



This preview shows how black text looks on a background with the Hex color E7C2BA.

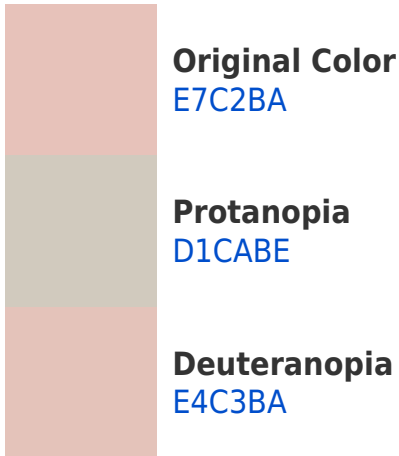


This preview shows how white text looks on a background with the Hex color E7C2BA.

Color Blindness Simulation

Color vision deficiency is a very complex topic, and I could not describe the different causes any better than Wikipedia does, so if you want to learn more, you should check out their [article about color blindness](#).

Dichromacy





Tritanopia
E9BFCE

Trichromacy



Original Color
E7C2BA

Protanomaly
D9C7BD

Deuteranomaly
E5C3BA

Tritanomaly
E8C0C7

Monochromacy



Original Color
E7C2BA

Achromatopsia
CCCCCC

Achromatomaly
D6C8C5

CSS Examples

Text

The CSS property to change the color of the text to Hex E7C2BA is called "color". The color property can be set on classes, ids or directly on the HTML element.

This example shows how text in the color #E7C2BA looks like.

```
.text, #text, p{  
    color:#E7C2BA  
}
```

If you want to add a text shadow in that color use the text-shadow property, you can generate a text shadow directly with our [CSS Text Shadow Generator](#).

Here you see how black text with a 4 pixel #E7C2BA colored shadow looks like.

```
.shadow{ text-shadow: 4px 4px 2px #E7C2BA
}
```

Border

The CSS property to change the border of an element to Hex E7C2BA is called "border". The border property can be set on classes, ids or directly on the HTML element.

This example shows the color as border, it can be applied via the CSS property "border" or "border-color".

```
.border, #border, table{ border:4px solid
#E7C2BA }
```

If only the border color should be changed use the property `border-color`.

```
.border{ border-color:#E7C2BA }
```

If you want to add a box shadow in that color use:

Here you see how a box with a 4 pixel #E7C2BA colored shadow looks like.

```
.boxshadow{ -moz-box-shadow:4px 4px 4px  
4px #E7C2BA; -webkit-box-shadow:4px 4px  
4px 4px #E7C2BA; box-shadow:4px 4px 4px  
4px #E7C2BA }
```

Background

The CSS property to change the background color of an element to Hex E7C2BA is called "background". The background property can be set on classes, ids or directly on the HTML element.

```
.background, #background, body{  
background:#E7C2BA }
```

If only the background color should be changed can be used:

```
.background{ background-color:#E7C2BA }
```

This example shows the color as background, it is applied via the CSS property "background".

To optimize and compress your CSS code, you can use our [online CSS compressor and optimizer](#) based on csstidy. If you want to create a linear or radial gradient as background or border, check our [CSS Gradient Generator](#).

Hey! You found this booklet interesting? Support Converting Colors with the new Membership Option!

The pro membership hides all ads, plus gives you double the colors in the color bucket, and more awesome pro features!

[Learn more, Memberships starting at \\$2.50/m!](#)

**Follow me
on Twitter!**

@ConvertingColor