

Converting Colors

Hex(E7C3C7)

Have a look what the booklet for
Hex(E7C3C7) contains.

Hex(E7C3C7)	3
<i>Conversions</i>	4
<i>Details</i>	6
<i>Harmonies</i>	11
<i>Previews</i>	23
<i>Color Blindness Simulation</i>	26
<i>CSS Examples</i>	29

Color

Hex(E7C3C7)

Conversions

Conversions Part 1

Format	Color
Hex	E7C3C7
RGB	231, 195, 199
RGB Percent	91%, 76%, 78%
CMY	0.0941, 0.2353, 0.2196
CMYK	0.00, 0.16, 0.14, 0.09
HSL	353°, 43%, 84%
HSV	353°, 16%, 91%
XYZ	62.7789, 60.1427, 62.3327
YIQ	206.2200, 20.1720, 8.8760

Conversions

Conversions Part 2

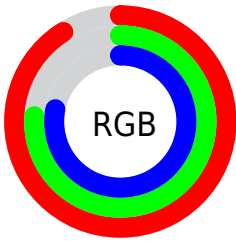
Format	Color
R _Y B	231, 195, 199
Decimal	15188935
CIE Lab	81.92, 13.39, 2.75
CIE LCh	82, 13.670, 11.621
Yxy	60.1427, 0.3389, 0.3246
Android (android.graphics.Color)	4293379015 (0xFFE7C3C7)
YUV	206.2200, -3.5595, 21.7321
Hunter-Lab	77.5517, 8.7821, 6.6314

Details

The Hex color **E7C3C7** is a light color, and the websafe version is hex **FFCCCC**. A complement of this color would be **C3E7E3**, and the grayscale version is **CECECE**.

A 20% lighter version of the original color is **FFFCFF**, and **AF8D91** is the 20% darker color. If you saturate the color by 10%, you get **E7ACB2**, and if you desaturate by 10%, it is **E7DADC**.

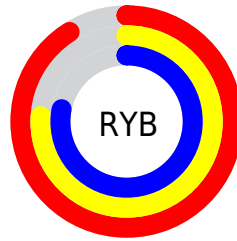
Distribution



Red (91%)

Green (76%)

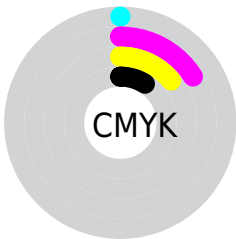
Blue (78%)



Red (91%)

Yellow (76%)

Blue (78%)

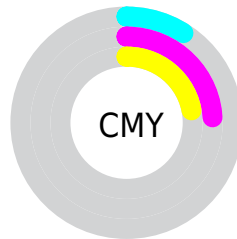


Cyan (0%)

Magenta (16%)

Yellow (14%)

Black (9%)



Cyan (9%)

Magenta (24%)

Yellow (22%)

Brightness & Saturation Gradients

These gradients show how the Hex color E7C3C7 changes by changing the brightness by 10 percent. The first figure shows a shift by +10% for each color and the second figure -10%.

Similar to the brightness gradients but the following saturation gradients show a change of the Hex color E7C3C7 by changing the saturation by 10% instead.

 E7C3C7

 E7C3C7

FFFFFF

 CBA8AC

 FFFCFF


 AF8D91

 947478

 7A5B5F

 614347

 492D31

 31181C

 1F0001

 000000

 E7C3C7

 E7C3C7

 E7ACB2

 E7DADC

 E7959E

 E7F1F0

 E77E89

 E7FFFF

 E76775

 E74F60

 E7384C

 E72137

 E70A23

 E7001A

Harmonies

Analogous

The Analogous color harmony consists of three colors that are next to each other on the color wheel.



E1C4D4



E7C3C7



E6C5BB

Triad

The Triadic color harmony groups three colors that are evenly spaced from another and form a triangle on the color wheel.



E7C3C7



C2D0B8



B5CFE4

Complementary

The Complementary color scheme is a pair of colors which are on the opposite of each other on the color wheel.



E7C3C7



C3E7E3

Split Complementary

Split-complementary colors differ from the complementary color scheme. The scheme consists of three colors, the original color and two neighbors of the complement color.



ACD2DC



E7C3C7



B5D3C3

Square

The Square scheme is like the rectangle color scheme, but the four colors are evenly spaced on the color wheel.



E7C3C7



D1CCB3



ACD3D0



C4CBE5

Rectangle

The Rectangle color scheme consists of four colors that form a rectangle on the color wheel.



E7C3C7



E1C7B6



ACD3D0



B1D0E2

Sweetspot

The Sweet Spot groups the original color and five complimentary colors.



E7C3C7



FFF2F4



E3C3E7



807879



000000



808080

Same Dimension

The Same Dimension uses a secret algorithm to generate beautiful new colors.



E7C3C7



FFCFD4



E7D1C3



736769



B30014



330006

Inverse Universe

The Inverse Universe completely reimagines the original color for something new.



E7C3C7



FFCFD4



C3D9E7



736769



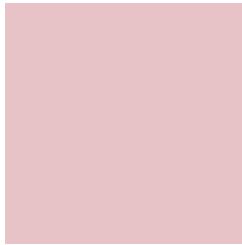
B30014



330006

Previews

White Background



This preview shows how the Hex color E7C3C7 looks on a white background.

Color Contrast Check

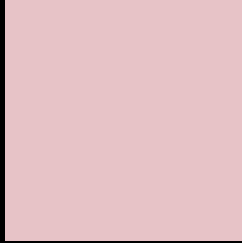
Large Text (above 18pt) WCAG AA × Fail

Any Text WCAG AA × Fail

Large Text (above 18pt) WCAG AAA × Fail

Any Text WCAG AAA × Fail

Black Background



This preview shows how the Hex color E7C3C7 looks on a black background.

Color Contrast Check

Large Text (above 18pt) WCAG AA ✓ Pass

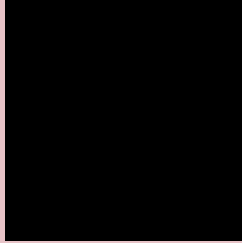
Any Text WCAG AA ✓ Pass

Large Text (above 18pt) WCAG AAA ✓ Pass

Any Text WCAG AAA ✓ Pass

If you want to check with other color combinations, try the [Color Contrast Checker](#).

Hex E7C3C7 Background



This preview shows how black text looks on a background with the Hex color E7C3C7.

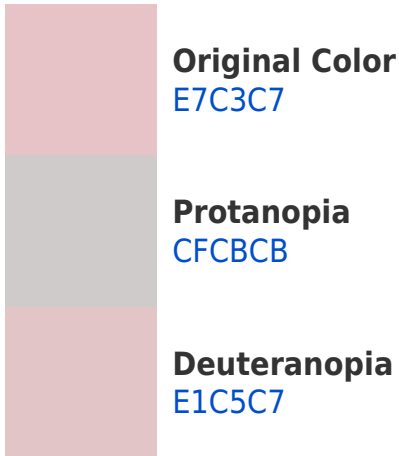


This preview shows how white text looks on a background with the Hex color E7C3C7.

Color Blindness Simulation

Color vision deficiency is a very complex topic, and I could not describe the different causes any better than Wikipedia does, so if you want to learn more, you should check out their [article about color blindness](#).

Dichromacy





Tritanopia
E8C1D1

Trichromacy



Original Color
E7C3C7

Protanomaly
D8C8CA

Deuteranomaly
E3C4C7

Tritanomaly
E8C2CD

Monochromacy



Original Color
E7C3C7

Achromatopsia
CECECE

Achromatomaly
D7CACB

CSS Examples

Text

The CSS property to change the color of the text to Hex E7C3C7 is called "color". The color property can be set on classes, ids or directly on the HTML element.

This example shows how text in the color #E7C3C7 looks like.

```
.text, #text, p{  
    color:#E7C3C7  
}
```

If you want to add a text shadow in that color use the text-shadow property, you can generate a text shadow directly with our [CSS Text Shadow Generator](#).

Here you see how black text with a 4 pixel #E7C3C7 colored shadow looks like.

```
.shadow{ text-shadow: 4px 4px 2px #E7C3C7
}
```

Border

The CSS property to change the border of an element to Hex E7C3C7 is called "border". The border property can be set on classes, ids or directly on the HTML element.

This example shows the color as border, it can be applied via the CSS property "border" or "border-color".

```
.border, #border, table{ border:4px solid
#E7C3C7 }
```

If only the border color should be changed use the property `border-color`.

```
.border{ border-color:#E7C3C7 }
```

If you want to add a box shadow in that color use:

Here you see how a box with a 4 pixel #E7C3C7 colored shadow looks like.

```
.boxshadow{ -moz-box-shadow:4px 4px 4px  
4px #E7C3C7; -webkit-box-shadow:4px 4px  
4px 4px #E7C3C7; box-shadow:4px 4px 4px  
4px #E7C3C7 }
```

Background

The CSS property to change the background color of an element to Hex E7C3C7 is called "background". The background property can be set on classes, ids or directly on the HTML element.

```
.background, #background, body{  
background:#E7C3C7 }
```

If only the background color should be changed can be used:

```
.background{ background-color:#E7C3C7 }
```

This example shows the color as background, it is applied via the CSS property "background".

To optimize and compress your CSS code, you can use our [online CSS compressor and optimizer](#) based on csstidy. If you want to create a linear or radial gradient as background or border, check our [CSS Gradient Generator](#).

Hey! You found this booklet interesting? Support Converting Colors with the new Membership Option!

The pro membership hides all ads, plus gives you double the colors in the color bucket, and more awesome pro features!

[Learn more, Memberships starting at \\$2.50/m!](#)

**Follow me
on Twitter!**

@ConvertingColor