

# Converting Colors

Hex(E7C4B8)

Have a look what the booklet for  
Hex(E7C4B8) contains.

<b>Hex(E7C4B8)</b> .....	3
<i><b>Conversions</b></i> .....	4
<i><b>Details</b></i> .....	6
<i><b>Harmonies</b></i> .....	11
<i><b>Previews</b></i> .....	23
<i><b>Color Blindness Simulation</b></i> .....	26
<i><b>CSS Examples</b></i> .....	29

# **Color**

**Hex(E7C4B8)**

# Conversions

## Conversions Part 1

<b>Format</b>	<b>Color</b>
Hex	E7C4B8
RGB	231, 196, 184
RGB Percent	91%, 77%, 72%
CMY	0.0941, 0.2314, 0.2784
CMYK	0.00, 0.15, 0.20, 0.09
HSL	15°, 49%, 81%
HSV	15°, 20%, 91%
XYZ	61.3467, 59.9295, 53.6816
YIQ	205.0970, 24.7120, 3.6880

# Conversions

## Conversions Part 2

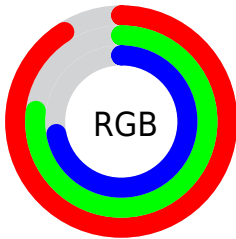
Format	Color
R <sub>Y</sub> B	231, 200, 184
Decimal	15189176
CIE Lab	81.80, 10.55, 10.62
CIE LCh	82, 14.973, 45.190
Yxy	59.9295, 0.3506, 0.3425
Android (android.graphics.Color)	4293379256 (0xFFE7C4B8)
YUV	205.0970, -10.4008, 22.7169
Hunter-Lab	77.4141, 5.9772, 13.0762

# Details

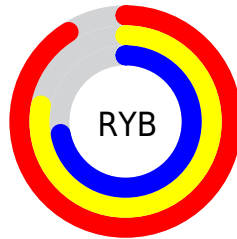
The Hex color **E7C4B8** is a light color, and the websafe version is hex **FFCCCC**. A complement of this color would be **B8DBE7**, and the grayscale version is **CDCDCD**.

A 20% lighter version of the original color is **FFFDF0**, and **AF8E83** is the 20% darker color. If you saturate the color by 10%, you get **E7B3A1**, and if you desaturate by 10%, it is **E7D5CF**.

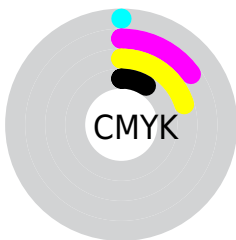
# Distribution



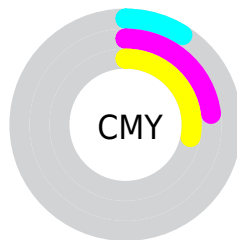
- Red (91%)
- Green (77%)
- Blue (72%)



- Red (91%)
- Yellow (78%)
- Blue (72%)



- Cyan (0%)
- Magenta (15%)
- Yellow (20%)
- Black (9%)



- Cyan (9%)
- Magenta (23%)
- Yellow (28%)

# Brightness & Saturation Gradients

These gradients show how the Hex color E7C4B8 changes by changing the brightness by 10 percent. The first figure shows a shift by +10% for each color and the second figure -10%.

Similar to the brightness gradients but the following saturation gradients show a change of the Hex color E7C4B8 by changing the saturation by 10% instead.



 E7C4B8

 E7C4B8

FFFFFF

 CBA99D

 FFFDF0

 AF8E83

 94756A

 7A5C52

 60443B

 482E25

 301910

 1C0000

 000000

 E7C4B8

 E7C4B8

 E7B3A1

 E7D5CF

 E7A28A

 E7E6E6

 E79073

 E7F8FD

 E77F5C

 E7FFFF

 E76E45

 E75D2D

 E74C16

 E73B00

# Harmonies

## Analogous

The Analogous color harmony consists of three colors that are next to each other on the color wheel.



E9C2C5



E7C4B8



DEC8B1

# Triad

The Triadic color harmony groups three colors that are evenly spaced from another and form a triangle on the color wheel.



E7C4B8



B1D3C4



C5CAE6

# Complementary

The Complementary color scheme is a pair of colors which are on the opposite of each other on the color wheel.



E7C4B8



B8DBE7

# Split Complementary

Split-complementary colors differ from the complementary color scheme. The scheme consists of three colors, the original color and two neighbors of the complement color.



B4CFE6



E7C4B8



A8D4D2

# Square

The Square scheme is like the rectangle color scheme, but the four colors are evenly spaced on the color wheel.



E7C4B8



BFD1B7



A9D2DF



D7C6DF

# Rectangle

The Rectangle color scheme consists of four colors that form a rectangle on the color wheel.



E7C4B8



D4CBB0



A9D2DF



BFCCE7



# Sweetspot

The Sweet Spot groups the original color and five complimentary colors.



E7C4B8



FFF4F0



E7B8DB



807977



000000



808080



# Same Dimension

The Same Dimension uses a secret algorithm to generate beautiful new colors.



E7C4B8



FFD1C2



E7DBB8



736A67



B32E00



330D00

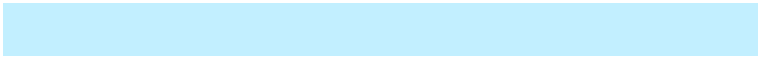


# Inverse Universe

The Inverse Universe completely reimagines the original color for something new.



B8DBE7



C2EFFF



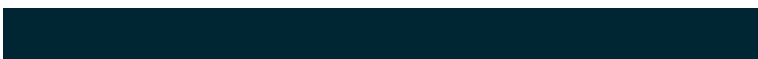
B8C4E7



677073



0085B3

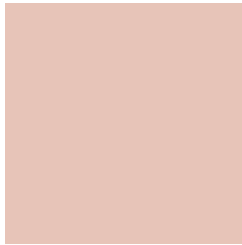


002633



# Previews

## White Background



This preview shows how the Hex color E7C4B8 looks on a white background.

## Color Contrast Check

Large Text (above 18pt) WCAG AA × Fail

Any Text WCAG AA × Fail

Large Text (above 18pt) WCAG AAA × Fail

Any Text WCAG AAA × Fail

# Black Background



This preview shows how the Hex color E7C4B8 looks on a black background.

## Color Contrast Check

Large Text (above 18pt) WCAG AA ✓ Pass

Any Text WCAG AA ✓ Pass

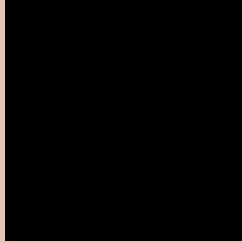
Large Text (above 18pt) WCAG AAA ✓ Pass

Any Text WCAG AAA ✓ Pass

If you want to check with other color combinations, try the [Color Contrast Checker](#).



## Hex E7C4B8 Background



This preview shows how black text looks on a background with the Hex color E7C4B8.

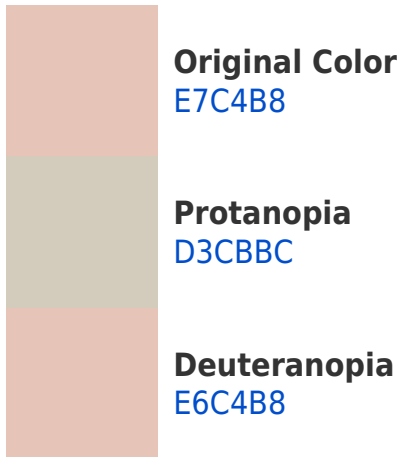


This preview shows how white text looks on a background with the Hex color E7C4B8.

# Color Blindness Simulation

Color vision deficiency is a very complex topic, and I could not describe the different causes any better than Wikipedia does, so if you want to learn more, you should check out their [article about color blindness](#).

## Dichromacy





# Trichromacy



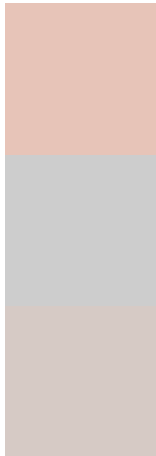
**Original Color**  
E7C4B8

**Protanomaly**  
DAC8BB

**Deuteranomaly**  
E6C4B8

**Tritanomaly**  
E9C1C7

# Monochromacy



**Original Color**  
E7C4B8

**Achromatopsia**  
CDCDCD

**Achromatomaly**  
D6CAC5

# CSS Examples

## Text

The CSS property to change the color of the text to Hex E7C4B8 is called "color". The color property can be set on classes, ids or directly on the HTML element.

This example shows how text in the color #E7C4B8 looks like.

```
.text, #text, p{  
    color:#E7C4B8  
}
```

If you want to add a text shadow in that color use the text-shadow property, you can generate a text shadow directly with our [CSS Text Shadow Generator](#).

Here you see how black text with a 4 pixel #E7C4B8 colored shadow looks like.

```
.shadow{ text-shadow: 4px 4px 2px #E7C4B8  
}
```

## Border

The CSS property to change the border of an element to Hex E7C4B8 is called "border". The border property can be set on classes, ids or directly on the HTML element.

This example shows the color as border, it can be applied via the CSS property "border" or "border-color".

```
.border, #border, table{ border:4px solid  
#E7C4B8 }
```

If only the border color should be changed use the property `border-color`.

```
.border{ border-color:#E7C4B8 }
```

If you want to add a box shadow in that color use:

Here you see how a box with a 4 pixel #E7C4B8 colored shadow looks like.

```
.boxshadow{ -moz-box-shadow:4px 4px 4px  
4px #E7C4B8; -webkit-box-shadow:4px 4px  
4px 4px #E7C4B8; box-shadow:4px 4px 4px  
4px #E7C4B8 }
```

# Background

The CSS property to change the background color of an element to Hex E7C4B8 is called "background". The background property can be set on classes, ids or directly on the HTML element.

```
.background, #background, body{  
background:#E7C4B8 }
```

If only the background color should be changed can be used:

```
.background{ background-color:#E7C4B8 }
```

This example shows the color as background, it is applied via the CSS property "background".

To optimize and compress your CSS code, you can use our [online CSS compressor and optimizer](#) based on csstidy. If you want to create a linear or radial gradient as background or border, check our [CSS Gradient Generator](#).



Hey! You found this booklet interesting? Support Converting Colors with the new Membership Option!

The pro membership hides all ads, plus gives you double the colors in the color bucket, and more awesome pro features!

**[Learn more, Memberships starting at \\$2.50/m!](#)**

**Follow me  
on Twitter!**

@ConvertingColor