

# Converting Colors

Hex(E7C4BA)

Have a look what the booklet for  
Hex(E7C4BA) contains.

<b>Hex(E7C4BA)</b> .....	3
<i><b>Conversions</b></i> .....	4
<i><b>Details</b></i> .....	6
<i><b>Harmonies</b></i> .....	11
<i><b>Previews</b></i> .....	23
<i><b>Color Blindness Simulation</b></i> .....	26
<i><b>CSS Examples</b></i> .....	29

# **Color**

**Hex(E7C4BA)**

# Conversions

## Conversions Part 1

<b>Format</b>	<b>Color</b>
Hex	E7C4BA
RGB	231, 196, 186
RGB Percent	91%, 77%, 73%
CMY	0.0941, 0.2314, 0.2706
CMYK	0.00, 0.15, 0.19, 0.09
HSL	13°, 48%, 82%
HSV	13°, 19%, 91%
XYZ	61.5579, 60.0140, 54.7938
YIQ	205.3250, 24.0700, 4.3100

# Conversions

## Conversions Part 2

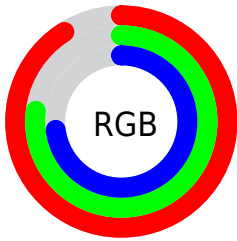
Format	Color
<a href="#">RYB</a>	<a href="#">231, 199, 186</a>
Decimal	<a href="#">15189178</a>
CIELab	<a href="#">81.85, 10.85, 9.62</a>
CIELCh	<a href="#">82, 14.499, 41.556</a>
Yxy	<a href="#">60.0140, 0.3490, 0.3403</a>
Android (android.graphics.Color)	<a href="#">4293379258 (0xFFE7C4BA)</a>
YUV	<a href="#">205.3250, -9.5272, 22.5170</a>
Hunter-Lab	<a href="#">77.4687, 6.2688, 12.2921</a>

# Details

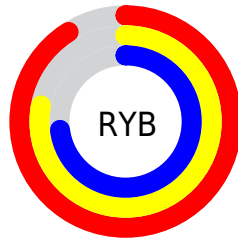
The Hex color **E7C4BA** is a light color, and the websafe version is hex **FFCCCC**. A complement of this color would be **BADDE7**, and the grayscale version is **CDCDCD**.

A 20% lighter version of the original color is **FFFDF2**, and **AF8E85** is the 20% darker color. If you saturate the color by 10%, you get **E7B2A3**, and if you desaturate by 10%, it is **E7D6D1**.

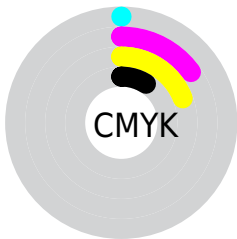
# Distribution



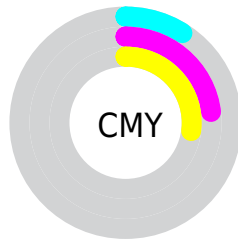
- Red (91%)
- Green (77%)
- Blue (73%)



- Red (91%)
- Yellow (78%)
- Blue (73%)



- Cyan (0%)
- Magenta (15%)
- Yellow (19%)
- Black (9%)



- Cyan (9%)
- Magenta (23%)
- Yellow (27%)

# Brightness & Saturation Gradients

These gradients show how the Hex color E7C4BA changes by changing the brightness by 10 percent. The first figure shows a shift by +10% for each color and the second figure -10%.

Similar to the brightness gradients but the following saturation gradients show a change of the Hex color E7C4BA by changing the saturation by 10% instead.



 E7C4BA

 E7C4BA

FFFFFF

 CBA99F

 FFFDF2

 AF8E85

 94756C

 7A5C53

 60443C

 482E27

 311912

 1C0000

 000000

 E7C4BA

 E7C4BA

 E7B2A3

 E7D6D1

 E7A08C

 E7E8E8

 E78E75

 E7FAFF

 E77C5E

 E7FFFF

 E76A46

 E7582F

 E74618

 E73401

 E73300

# Harmonies

## Analogous

The Analogous color harmony consists of three colors that are next to each other on the color wheel.



E8C2C7



E7C4BA



DFC8B2

# Triad

The Triadic color harmony groups three colors that are evenly spaced from another and form a triangle on the color wheel.



E7C4BA



B3D3C2



C4CBE6

# Complementary

The Complementary color scheme is a pair of colors which are on the opposite of each other on the color wheel.



E7C4BA



BADDE7

# Split Complementary

Split-complementary colors differ from the complementary color scheme. The scheme consists of three colors, the original color and two neighbors of the complement color.



B4CFE5



E7C4BA



AAD4D0

# Square

The Square scheme is like the rectangle color scheme, but the four colors are evenly spaced on the color wheel.



E7C4BA



C1D0B7



AAD2DD



D5C6E0

# Rectangle

The Rectangle color scheme consists of four colors that form a rectangle on the color wheel.



E7C4BA



D6CBB0



AAD2DD



BECCE6

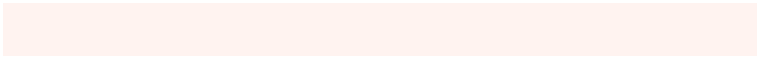


# Sweetspot

The Sweet Spot groups the original color and five complimentary colors.



E7C4BA



FFF3F0



E7BADD



807977



000000



808080



# Same Dimension

The Same Dimension uses a secret algorithm to generate beautiful new colors.



E7C4BA



FFD1C4



E7DABA



736A67



B32800



330B00

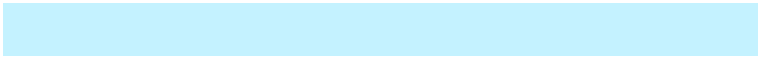


# Inverse Universe

The Inverse Universe completely reimagines the original color for something new.



BADDE7



C4F2FF



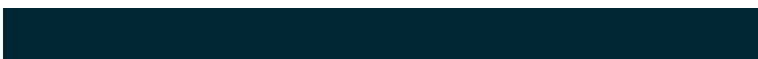
BAC7E7



677073



008BB3

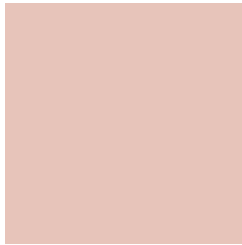


002833



# Previews

## White Background



This preview shows how the Hex color E7C4BA looks on a white background.

## Color Contrast Check

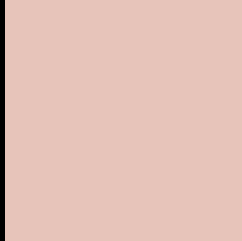
Large Text (above 18pt) WCAG AA × Fail

Any Text WCAG AA × Fail

Large Text (above 18pt) WCAG AAA × Fail

Any Text WCAG AAA × Fail

# Black Background



This preview shows how the Hex color E7C4BA looks on a black background.

## Color Contrast Check

Large Text (above 18pt) WCAG AA ✓ Pass

Any Text WCAG AA ✓ Pass

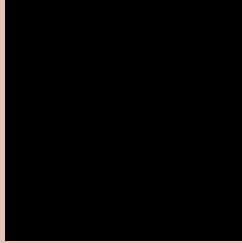
Large Text (above 18pt) WCAG AAA ✓ Pass

Any Text WCAG AAA ✓ Pass

If you want to check with other color combinations, try the [Color Contrast Checker](#).



## Hex E7C4BA Background



This preview shows how black text looks on a background with the Hex color E7C4BA.

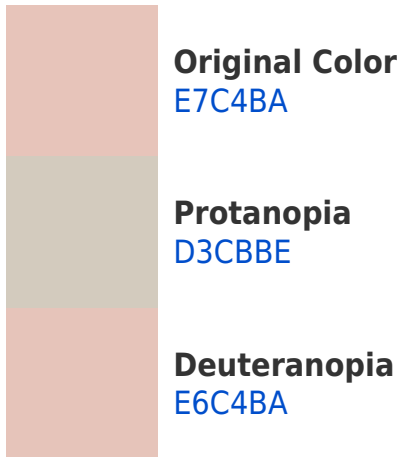


This preview shows how white text looks on a background with the Hex color E7C4BA.

# Color Blindness Simulation

Color vision deficiency is a very complex topic, and I could not describe the different causes any better than Wikipedia does, so if you want to learn more, you should check out their [article about color blindness](#).

## Dichromacy





**Tritanopia**  
EAC1D0

# Trichromacy



**Original Color**  
E7C4BA

**Protanomaly**  
DAC8BD

**Deuteranomaly**  
E6C4BA

**Tritanomaly**  
E9C2C8

# Monochromacy



**Original Color**  
E7C4BA

**Achromatopsia**  
CDCDCD

**Achromatomaly**  
D6CAC6

# CSS Examples

## Text

The CSS property to change the color of the text to Hex E7C4BA is called "color". The color property can be set on classes, ids or directly on the HTML element.

This example shows how text in the color #E7C4BA looks like.

```
.text, #text, p{  
    color:#E7C4BA  
}
```

If you want to add a text shadow in that color use the text-shadow property, you can generate a text shadow directly with our [CSS Text Shadow Generator](#).

Here you see how black text with a 4 pixel #E7C4BA colored shadow looks like.

```
.shadow{ text-shadow: 4px 4px 2px #E7C4BA
}
```

## Border

The CSS property to change the border of an element to Hex E7C4BA is called "border". The border property can be set on classes, ids or directly on the HTML element.

This example shows the color as border, it can be applied via the CSS property "border" or "border-color".

```
.border, #border, table{ border:4px solid
#E7C4BA }
```

If only the border color should be changed use the property `border-color`.

```
.border{ border-color:#E7C4BA }
```

If you want to add a box shadow in that color use:

Here you see how a box with a 4 pixel #E7C4BA colored shadow looks like.

```
.boxshadow{ -moz-box-shadow:4px 4px 4px  
4px #E7C4BA; -webkit-box-shadow:4px 4px  
4px 4px #E7C4BA; box-shadow:4px 4px 4px  
4px #E7C4BA }
```

# Background

The CSS property to change the background color of an element to Hex E7C4BA is called "background". The background property can be set on classes, ids or directly on the HTML element.

```
.background, #background, body{  
background:#E7C4BA }
```

If only the background color should be changed can be used:

```
.background{ background-color:#E7C4BA }
```

This example shows the color as background, it is applied via the CSS property "background".

To optimize and compress your CSS code, you can use our [online CSS compressor and optimizer](#) based on csstidy. If you want to create a linear or radial gradient as background or border, check our [CSS Gradient Generator](#).



Hey! You found this booklet interesting? Support Converting Colors with the new Membership Option!

The pro membership hides all ads, plus gives you double the colors in the color bucket, and more awesome pro features!

**[Learn more, Memberships starting at \\$2.50/m!](#)**

**Follow me  
on Twitter!**

@ConvertingColor