

Converting Colors

Hex(E7C5AC)

Have a look what the booklet for
Hex(E7C5AC) contains.

Hex(E7C5AC)	3
<i>Conversions</i>	4
<i>Details</i>	6
<i>Harmonies</i>	11
<i>Previews</i>	23
<i>Color Blindness Simulation</i>	26
<i>CSS Examples</i>	29

Color

Hex(E7C5AC)

Conversions

Conversions Part 1

Format	Color
Hex	E7C5AC
RGB	231, 197, 172
RGB Percent	91%, 77%, 67%
CMY	0.0941, 0.2275, 0.3255
CMYK	0.00, 0.15, 0.26, 0.09
HSL	25°, 55%, 79%
HSV	25°, 26%, 91%
XYZ	60.3676, 59.9000, 47.4099
YIQ	204.3160, 28.2890, -0.5670

Conversions

Conversions Part 2

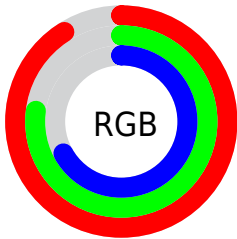
Format	Color
R _Y B	231, 215, 172
Decimal	15189420
CIE Lab	81.78, 8.31, 17.00
CIE LCh	82, 18.926, 63.954
Yxy	59.9000, 0.3600, 0.3572
Android (android.graphics.Color)	4293379500 (0xFFE7C5AC)
YUV	204.3160, -15.9318, 23.4019
Hunter-Lab	77.3951, 3.7874, 17.8573

Details

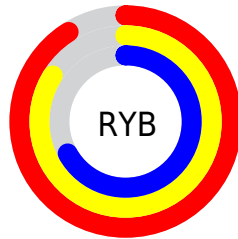
The Hex color **E7C5AC** is a light color, and the websafe version is hex **FFCCCC**. A complement of this color would be **ACCEE7**, and the grayscale version is **CCCCCC**.

A 20% lighter version of the original color is **FFFEE3**, and **AF8F78** is the 20% darker color. If you saturate the color by 10%, you get **E7B895**, and if you desaturate by 10%, it is **E7D2C3**.

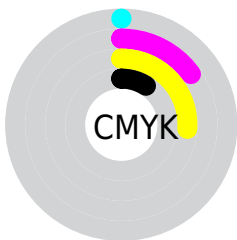
Distribution



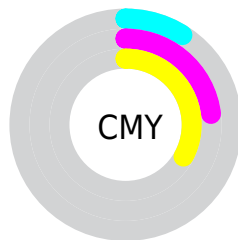
- Red (91%)
- Green (77%)
- Blue (67%)



- Red (91%)
- Yellow (84%)
- Blue (67%)



- Cyan (0%)
- Magenta (15%)
- Yellow (26%)
- Black (9%)



- Cyan (9%)
- Magenta (23%)
- Yellow (33%)

Brightness & Saturation Gradients

These gradients show how the Hex color E7C5AC changes by changing the brightness by 10 percent. The first figure shows a shift by +10% for each color and the second figure -10%.

Similar to the brightness gradients but the following saturation gradients show a change of the Hex color E7C5AC by changing the saturation by 10% instead.

 E7C5AC

 E7C5AC

FFFFFF

 CBAA91

 FFFEE3

 AF8F78

 94765F

 795D47

 604530

 472F1B

 301A02

 190000

 000000

 E7C5AC

 E7C5AC

 E7B895

 E7D2C3

 E7AA7E

 E7E0DA

 E79D67

 E7EDF1

 E79050

 E7FAFF

 E78239

 E7FFFF

 E77521

 E7680A

 E76200

Harmonies

Analogous

The Analogous color harmony consists of three colors that are next to each other on the color wheel.



F0C1B8



E7C5AC



D7CBA8

Triad

The Triadic color harmony groups three colors that are evenly spaced from another and form a triangle on the color wheel.



E7C5AC



A1D6CD



D2C6E9

Complementary

The Complementary color scheme is a pair of colors which are on the opposite of each other on the color wheel.



E7C5AC



ACCEE7

Split Complementary

Split-complementary colors differ from the complementary color scheme. The scheme consists of three colors, the original color and two neighbors of the complement color.



BBCCEE



E7C5AC



9DD5DE

Square

The Square scheme is like the rectangle color scheme, but the four colors are evenly spaced on the color wheel.



E7C5AC



AFD4BB



A6D1EB



E5C1DB

Rectangle

The Rectangle color scheme consists of four colors that form a rectangle on the color wheel.



E7C5AC



CACFAB



A6D1EB



CAC8EC

Sweetspot

The Sweet Spot groups the original color and five complimentary colors.



E7C5AC



FFF3EB



E7ACCE



807873



000000



808080

Same Dimension

The Same Dimension uses a secret algorithm to generate beautiful new colors.



E7C5AC



FFD1B0



E7E2AC



736C67



B34C00



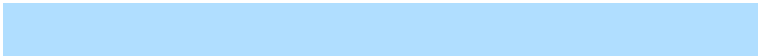
331600

Inverse Universe

The Inverse Universe completely reimagines the original color for something new.



ACCEE7



B0DEFF



ACB1E7



676E73



0067B3



001D33

Previews

White Background



This preview shows how the Hex color E7C5AC looks on a white background.

Color Contrast Check

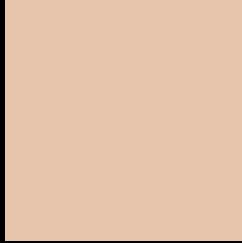
Large Text (above 18pt) WCAG AA × Fail

Any Text WCAG AA × Fail

Large Text (above 18pt) WCAG AAA × Fail

Any Text WCAG AAA × Fail

Black Background



This preview shows how the Hex color E7C5AC looks on a black background.

Color Contrast Check

Large Text (above 18pt) WCAG AA ✓ Pass

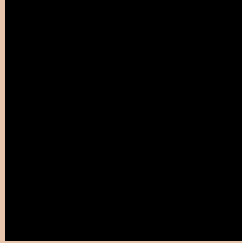
Any Text WCAG AA ✓ Pass

Large Text (above 18pt) WCAG AAA ✓ Pass

Any Text WCAG AAA ✓ Pass

If you want to check with other color combinations, try the [Color Contrast Checker](#).

Hex E7C5AC Background



This preview shows how black text looks on a background with the Hex color E7C5AC.

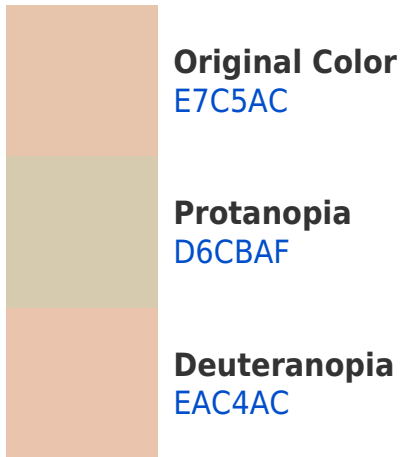


This preview shows how white text looks on a background with the Hex color E7C5AC.

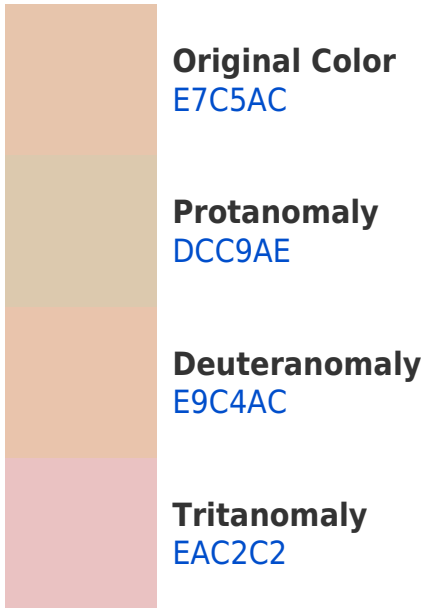
Color Blindness Simulation

Color vision deficiency is a very complex topic, and I could not describe the different causes any better than Wikipedia does, so if you want to learn more, you should check out their [article about color blindness](#).

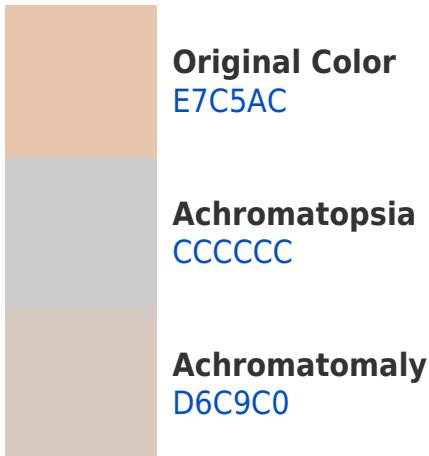
Dichromacy



Trichromacy



Monochromacy



CSS Examples

Text

The CSS property to change the color of the text to Hex E7C5AC is called "color". The color property can be set on classes, ids or directly on the HTML element.

This example shows how text in the color #E7C5AC looks like.

```
.text, #text, p{  
    color:#E7C5AC  
}
```

If you want to add a text shadow in that color use the text-shadow property, you can generate a text shadow directly with our [CSS Text Shadow Generator](#).

Here you see how black text with a 4 pixel #E7C5AC colored shadow looks like.

```
.shadow{ text-shadow: 4px 4px 2px #E7C5AC
}
```

Border

The CSS property to change the border of an element to Hex E7C5AC is called "border". The border property can be set on classes, ids or directly on the HTML element.

This example shows the color as border, it can be applied via the CSS property "border" or "border-color".

```
.border, #border, table{ border:4px solid
#E7C5AC }
```

If only the border color should be changed use the property `border-color`.

```
.border{ border-color:#E7C5AC }
```

If you want to add a box shadow in that color use:

Here you see how a box with a 4 pixel #E7C5AC colored shadow looks like.

```
.boxshadow{ -moz-box-shadow:4px 4px 4px  
4px #E7C5AC; -webkit-box-shadow:4px 4px  
4px 4px #E7C5AC; box-shadow:4px 4px 4px  
4px #E7C5AC }
```

Background

The CSS property to change the background color of an element to Hex E7C5AC is called "background". The background property can be set on classes, ids or directly on the HTML element.

```
.background, #background, body{  
background:#E7C5AC }
```

If only the background color should be changed can be used:

```
.background{ background-color:#E7C5AC }
```

This example shows the color as background, it is applied via the CSS property "background".

To optimize and compress your CSS code, you can use our [online CSS compressor and optimizer](#) based on csstidy. If you want to create a linear or radial gradient as background or border, check our [CSS Gradient Generator](#).

Hey! You found this booklet interesting? Support Converting Colors with the new Membership Option!

The pro membership hides all ads, plus gives you double the colors in the color bucket, and more awesome pro features!

[Learn more, Memberships starting at \\$2.50/m!](#)

**Follow me
on Twitter!**

@ConvertingColor