

Converting Colors

Hex(E7C7BD)

Have a look what the booklet for
Hex(E7C7BD) contains.

Hex(E7C7BD)	3
<i>Conversions</i>	4
<i>Details</i>	6
<i>Harmonies</i>	11
<i>Previews</i>	23
<i>Color Blindness Simulation</i>	26
<i>CSS Examples</i>	29

Color

Hex(E7C7BD)

Conversions

Conversions Part 1

Format	Color
Hex	E7C7BD
RGB	231, 199, 189
RGB Percent	91%, 78%, 74%
CMY	0.0941, 0.2196, 0.2588
CMYK	0.00, 0.14, 0.18, 0.09
HSL	14°, 47%, 82%
HSV	14°, 18%, 91%
XYZ	62.5637, 61.5099, 56.7192
YIQ	207.4280, 22.2820, 3.6740

Conversions

Conversions Part 2

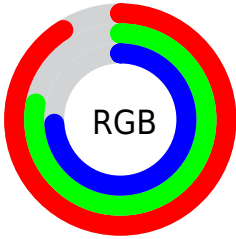
Format	Color
R _Y B	231, 202, 189
Decimal	15189949
CIE Lab	82.65, 9.72, 9.17
CIE LCh	83, 13.358, 43.327
Yxy	61.5099, 0.3461, 0.3402
Android (android.graphics.Color)	4293380029 (0xFFE7C7BD)
YUV	207.4280, -9.0850, 20.6726
Hunter-Lab	78.4282, 5.1435, 12.0213

Details

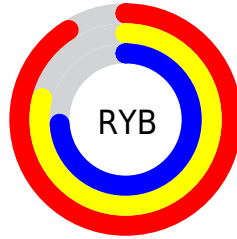
The Hex color **E7C7BD** is a light color, and the websafe version is hex **FFCCCC**. A complement of this color would be **BDDDE7**, and the grayscale version is **CFCFCF**.

A 20% lighter version of the original color is **FFFFFF5**, and **AF9188** is the 20% darker color. If you saturate the color by 10%, you get **E7B5A6**, and if you desaturate by 10%, it is **E7D9D4**.

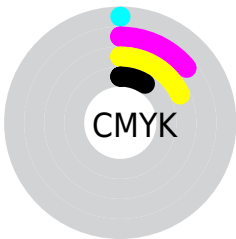
Distribution



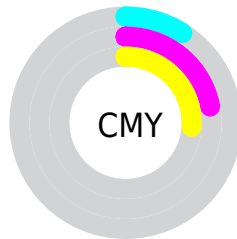
- Red (91%)
- Green (78%)
- Blue (74%)



- Red (91%)
- Yellow (79%)
- Blue (74%)



- Cyan (0%)
- Magenta (14%)
- Yellow (18%)
- Black (9%)



- Cyan (9%)
- Magenta (22%)
- Yellow (26%)

Brightness & Saturation Gradients

These gradients show how the Hex color E7C7BD changes by changing the brightness by 10 percent. The first figure shows a shift by +10% for each color and the second figure -10%.

Similar to the brightness gradients but the following saturation gradients show a change of the Hex color E7C7BD by changing the saturation by 10% instead.

 E7C7BD

 E7C7BD

FFFFFFF

 CBACA2

 FFFFF5


 AF9188

 94776E

 7A5F56

 61473F

 483029

 311B15

 1D0200

 000000

 E7C7BD

 E7C7BD

 E7B5A6

 E7D9D4

 E7A48F

 E7EAEB

 E79278

 E7FCFF

 E78161

 E7FFFF

 E76F49

 E75D32

 E74C1B

 E73A04

 E73700

Harmonies

Analogous

The Analogous color harmony consists of three colors that are next to each other on the color wheel.



E9C5C8



E7C7BD



DFCAB6

Triad

The Triadic color harmony groups three colors that are evenly spaced from another and form a triangle on the color wheel.



E7C7BD



B7D5C6



C7CDE6

Complementary

The Complementary color scheme is a pair of colors which are on the opposite of each other on the color wheel.



E7C7BD



BDDDE7

Split Complementary

Split-complementary colors differ from the complementary color scheme. The scheme consists of three colors, the original color and two neighbors of the complement color.



B9D1E5



E7C7BD



AFD5D3

Square

The Square scheme is like the rectangle color scheme, but the four colors are evenly spaced on the color wheel.



E7C7BD



C4D2BB



AFD4DE



D7C9E0

Rectangle

The Rectangle color scheme consists of four colors that form a rectangle on the color wheel.



E7C7BD



D7CDB5



AFD4DE



C2CEE6

Sweetspot

The Sweet Spot groups the original color and five complimentary colors.



E7C7BD



FFF5F2



E7BDDD



807A78



000000



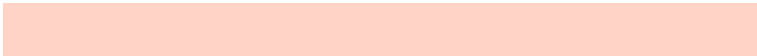
808080

Same Dimension

The Same Dimension uses a secret algorithm to generate beautiful new colors.



E7C7BD



FFD4C7



E7DCBD



736A67



B32A00



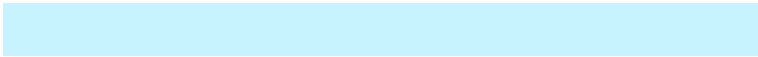
330C00

Inverse Universe

The Inverse Universe completely reimagines the original color for something new.



BDDDE7



C7F2FF



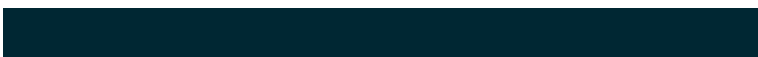
BDC8E7



677073



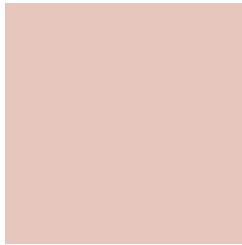
0088B3



002733

Previews

White Background



This preview shows how the Hex color E7C7BD looks on a white background.

Color Contrast Check

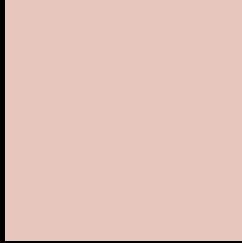
Large Text (above 18pt) WCAG AA × Fail

Any Text WCAG AA × Fail

Large Text (above 18pt) WCAG AAA × Fail

Any Text WCAG AAA × Fail

Black Background



This preview shows how the Hex color E7C7BD looks on a black background.

Color Contrast Check

Large Text (above 18pt) WCAG AA ✓ Pass

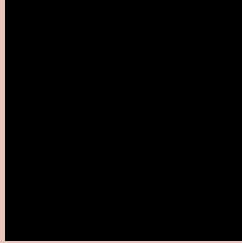
Any Text WCAG AA ✓ Pass

Large Text (above 18pt) WCAG AAA ✓ Pass

Any Text WCAG AAA ✓ Pass

If you want to check with other color combinations, try the [Color Contrast Checker](#).

Hex E7C7BD Background



This preview shows how black text looks on a background with the Hex color E7C7BD.

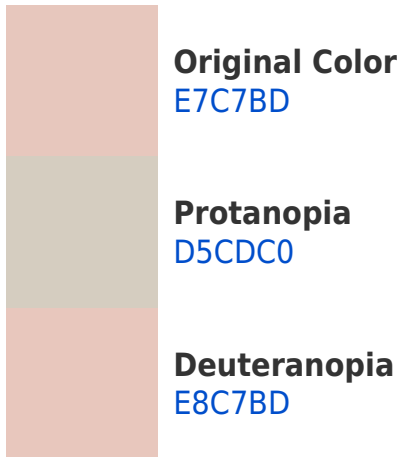


This preview shows how white text looks on a background with the Hex color E7C7BD.

Color Blindness Simulation

Color vision deficiency is a very complex topic, and I could not describe the different causes any better than Wikipedia does, so if you want to learn more, you should check out their [article about color blindness](#).

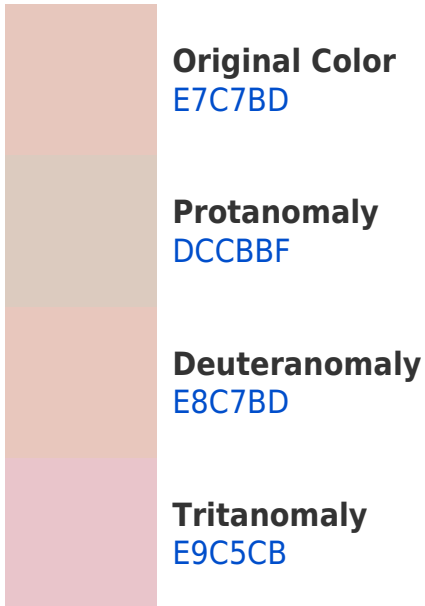
Dichromacy



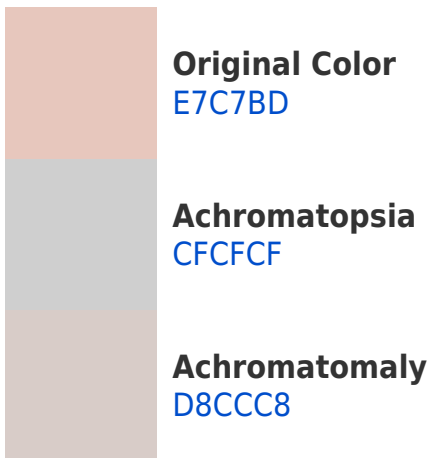


Tritanopia
EAC4D3

Trichromacy



Monochromacy



CSS Examples

Text

The CSS property to change the color of the text to Hex E7C7BD is called "color". The color property can be set on classes, ids or directly on the HTML element.

This example shows how text in the color #E7C7BD looks like.

```
.text, #text, p{  
    color:#E7C7BD  
}
```

If you want to add a text shadow in that color use the text-shadow property, you can generate a text shadow directly with our [CSS Text Shadow Generator](#).

Here you see how black text with a 4 pixel #E7C7BD colored shadow looks like.

```
.shadow{ text-shadow: 4px 4px 2px #E7C7BD }  
}
```

Border

The CSS property to change the border of an element to Hex E7C7BD is called "border". The border property can be set on classes, ids or directly on the HTML element.

This example shows the color as border, it can be applied via the CSS property "border" or "border-color".

```
.border, #border, table{ border:4px solid #E7C7BD }  
}
```

If only the border color should be changed use the property `border-color`.

```
.border{ border-color:#E7C7BD }
```

If you want to add a box shadow in that color use:

Here you see how a box with a 4 pixel #E7C7BD colored shadow looks like.

```
.boxshadow{ -moz-box-shadow:4px 4px 4px  
4px #E7C7BD; -webkit-box-shadow:4px 4px  
4px 4px #E7C7BD; box-shadow:4px 4px 4px  
4px #E7C7BD }
```

Background

The CSS property to change the background color of an element to Hex E7C7BD is called "background". The background property can be set on classes, ids or directly on the HTML element.

```
.background, #background, body{  
background:#E7C7BD }
```

If only the background color should be changed can be used:

```
.background{ background-color:#E7C7BD }
```

This example shows the color as background, it is applied via the CSS property "background".

To optimize and compress your CSS code, you can use our [online CSS compressor and optimizer](#) based on csstidy. If you want to create a linear or radial gradient as background or border, check our [CSS Gradient Generator](#).

Hey! You found this booklet interesting? Support Converting Colors with the new Membership Option!

The pro membership hides all ads, plus gives you double the colors in the color bucket, and more awesome pro features!

[Learn more, Memberships starting at \\$2.50/m!](#)

**Follow me
on Twitter!**

@ConvertingColor