

Converting Colors

Hex(E7C8B8)

Have a look what the booklet for
Hex(E7C8B8) contains.

Hex(E7C8B8)	3
<i>Conversions</i>	4
<i>Details</i>	6
<i>Harmonies</i>	11
<i>Previews</i>	23
<i>Color Blindness Simulation</i>	26
<i>CSS Examples</i>	29

Color

Hex(E7C8B8)

Conversions

Conversions Part 1

Format	Color
Hex	E7C8B8
RGB	231, 200, 184
RGB Percent	91%, 78%, 72%
CMY	0.0941, 0.2157, 0.2784
CMYK	0.00, 0.13, 0.20, 0.09
HSL	20°, 49%, 81%
HSV	20°, 20%, 91%
XYZ	62.2610, 61.7582, 53.9864
YIQ	207.4450, 23.6120, 1.5960

Conversions

Conversions Part 2

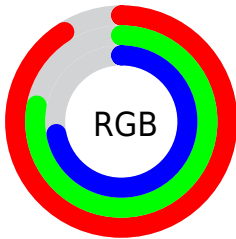
Format	Color
R _Y B	231, 208, 184
Decimal	15190200
CIE Lab	82.78, 8.44, 12.02
CIE LCh	83, 14.691, 54.918
Yxy	61.7582, 0.3498, 0.3469
Android (android.graphics.Color)	4293380280 (0xFFE7C8B8)
YUV	207.4450, -11.5584, 20.6577
Hunter-Lab	78.5864, 3.8927, 14.2801

Details

The Hex color **E7C8B8** is a light color, and the websafe version is hex **FFCCCC**. A complement of this color would be **B8D7E7**, and the grayscale version is **D0D0D0**.

A 20% lighter version of the original color is **FFFFFF0**, and **AF9283** is the 20% darker color. If you saturate the color by 10%, you get **E7B9A1**, and if you desaturate by 10%, it is **E7D7CF**.

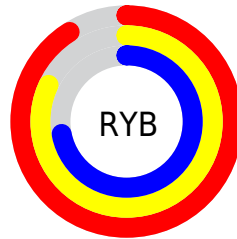
Distribution



Red (91%)

Green (78%)

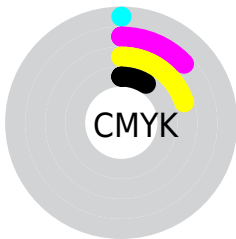
Blue (72%)



Red (91%)

Yellow (82%)

Blue (72%)

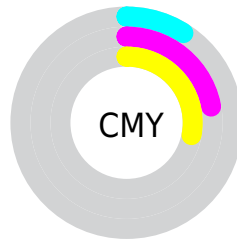


Cyan (0%)

Magenta (13%)

Yellow (20%)

Black (9%)



Cyan (9%)

Magenta (22%)

Yellow (28%)

Brightness & Saturation Gradients

These gradients show how the Hex color E7C8B8 changes by changing the brightness by 10 percent. The first figure shows a shift by +10% for each color and the second figure -10%.

Similar to the brightness gradients but the following saturation gradients show a change of the Hex color E7C8B8 by changing the saturation by 10% instead.

 E7C8B8

FFFFFF

 FFFFF0

 E7C8B8

 CBAD9D

 AF9283

 94786A

 7A6052

 60483B

 483125

 311C10

 1C0300

 000000

 E7C8B8

 E7C8B8

 E7B9A1

 E7D7CF

 E7AA8A

 E7E6E6

 E79A73

 E7F6FD

 E78B5C

 E7FFFF

 E77C45

 E76D2D

 E75D16

 E74F00

Harmonies

Analogous

The Analogous color harmony consists of three colors that are next to each other on the color wheel.



ECC5C3



E7C8B8



DCCCB3

Triad

The Triadic color harmony groups three colors that are evenly spaced from another and form a triangle on the color wheel.



E7C8B8



B0D6CB



CECBE7

Complementary

The Complementary color scheme is a pair of colors which are on the opposite of each other on the color wheel.



E7C8B8



B8D7E7

Split Complementary

Split-complementary colors differ from the complementary color scheme. The scheme consists of three colors, the original color and two neighbors of the complement color.



BDD0E9



E7C8B8



ABD6D9

Square

The Square scheme is like the rectangle color scheme, but the four colors are evenly spaced on the color wheel.



E7C8B8



BDD4BE



AFD4E4



DEC7DE

Rectangle

The Rectangle color scheme consists of four colors that form a rectangle on the color wheel.



E7C8B8



D2CFB3



AFD4E4



C8CDE9

Sweetspot

The Sweet Spot groups the original color and five complimentary colors.



E7C8B8



FFF5F0



E7B8D7



807A77



000000



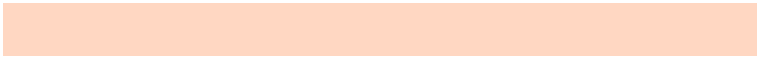
808080

Same Dimension

The Same Dimension uses a secret algorithm to generate beautiful new colors.



E7C8B8



FFD7C2



E7DFB8



736B67



B33D00



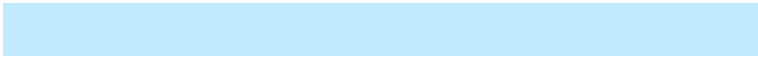
331100

Inverse Universe

The Inverse Universe completely reimagines the original color for something new.



B8D7E7



C2EAFF



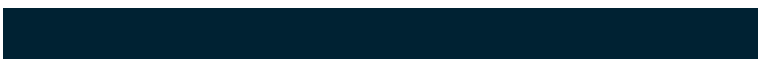
B8C0E7



676F73



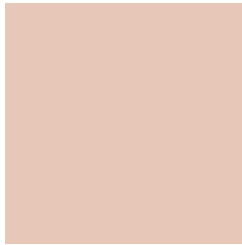
0076B3



002233

Previews

White Background



This preview shows how the Hex color E7C8B8 looks on a white background.

Color Contrast Check

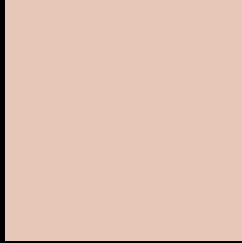
Large Text (above 18pt) WCAG AA × Fail

Any Text WCAG AA × Fail

Large Text (above 18pt) WCAG AAA × Fail

Any Text WCAG AAA × Fail

Black Background



This preview shows how the Hex color E7C8B8 looks on a black background.

Color Contrast Check

Large Text (above 18pt) WCAG AA ✓ Pass

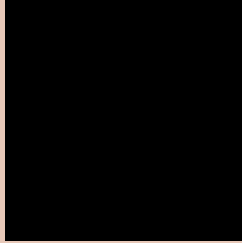
Any Text WCAG AA ✓ Pass

Large Text (above 18pt) WCAG AAA ✓ Pass

Any Text WCAG AAA ✓ Pass

If you want to check with other color combinations, try the [Color Contrast Checker](#).

Hex E7C8B8 Background



This preview shows how black text looks on a background with the Hex color E7C8B8.

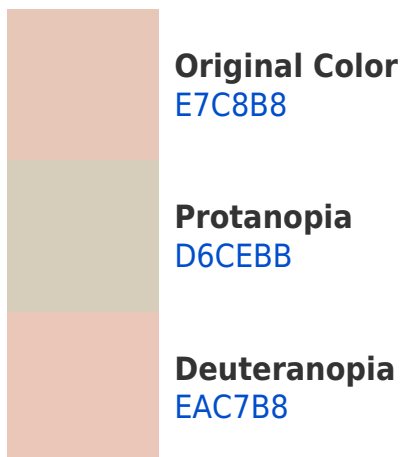


This preview shows how white text looks on a background with the Hex color E7C8B8.

Color Blindness Simulation

Color vision deficiency is a very complex topic, and I could not describe the different causes any better than Wikipedia does, so if you want to learn more, you should check out their [article about color blindness](#).

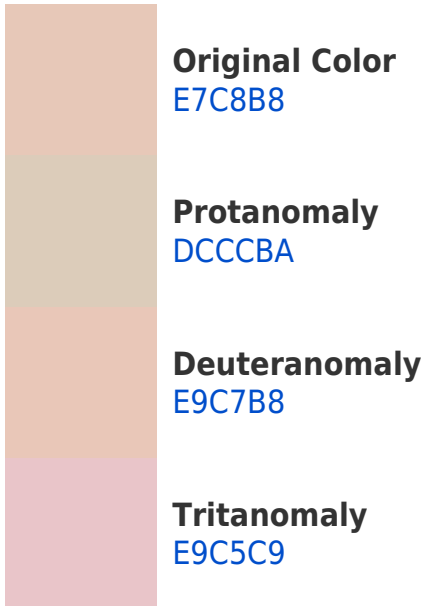
Dichromacy



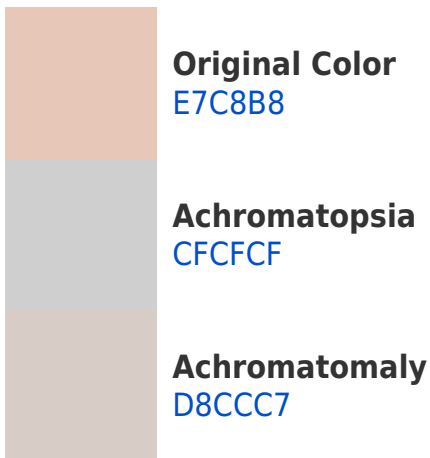


Tritanopia
EAC4D3

Trichromacy



Monochromacy



CSS Examples

Text

The CSS property to change the color of the text to Hex E7C8B8 is called "color". The color property can be set on classes, ids or directly on the HTML element.

This example shows how text in the color #E7C8B8 looks like.

```
.text, #text, p{  
    color:#E7C8B8  
}
```

If you want to add a text shadow in that color use the text-shadow property, you can generate a text shadow directly with our [CSS Text Shadow Generator](#).

Here you see how black text with a 4 pixel #E7C8B8 colored shadow looks like.

```
.shadow{ text-shadow: 4px 4px 2px #E7C8B8
}
```

Border

The CSS property to change the border of an element to Hex E7C8B8 is called "border". The border property can be set on classes, ids or directly on the HTML element.

This example shows the color as border, it can be applied via the CSS property "border" or "border-color".

```
.border, #border, table{ border:4px solid
#E7C8B8 }
```

If only the border color should be changed use the property `border-color`.

```
.border{ border-color:#E7C8B8 }
```

If you want to add a box shadow in that color use:

Here you see how a box with a 4 pixel #E7C8B8 colored shadow looks like.

```
.boxshadow{ -moz-box-shadow:4px 4px 4px  
4px #E7C8B8; -webkit-box-shadow:4px 4px  
4px 4px #E7C8B8; box-shadow:4px 4px 4px  
4px #E7C8B8 }
```

Background

The CSS property to change the background color of an element to Hex E7C8B8 is called "background". The background property can be set on classes, ids or directly on the HTML element.

```
.background, #background, body{  
background:#E7C8B8 }
```

If only the background color should be changed can be used:

```
.background{ background-color:#E7C8B8 }
```

This example shows the color as background, it is applied via the CSS property "background".

To optimize and compress your CSS code, you can use our [online CSS compressor and optimizer](#) based on csstidy. If you want to create a linear or radial gradient as background or border, check our [CSS Gradient Generator](#).

Hey! You found this booklet interesting? Support Converting Colors with the new Membership Option!

The pro membership hides all ads, plus gives you double the colors in the color bucket, and more awesome pro features!

[Learn more, Memberships starting at \\$2.50/m!](#)

**Follow me
on Twitter!**

@ConvertingColor