

Converting Colors

Hex(E7CAC3)

Have a look what the booklet for
Hex(E7CAC3) contains.

Hex(E7CAC3)	3
<i>Conversions</i>	4
<i>Details</i>	6
<i>Harmonies</i>	11
<i>Previews</i>	23
<i>Color Blindness Simulation</i>	26
<i>CSS Examples</i>	29

Color

Hex(E7CAC3)

Conversions

Conversions Part 1

Format	Color
Hex	E7CAC3
RGB	231, 202, 195
RGB Percent	91%, 79%, 76%
CMY	0.0941, 0.2078, 0.2353
CMYK	0.00, 0.13, 0.16, 0.09
HSL	12°, 43%, 84%
HSV	12°, 16%, 91%
XYZ	63.9259, 63.1701, 60.4536
YIQ	209.8730, 19.5310, 3.9710

Conversions

Conversions Part 2

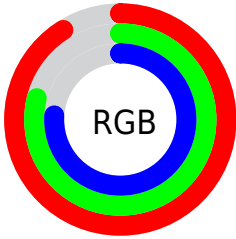
Format	Color
R_{YB}	231, 204, 195
Decimal	15190723
CIE Lab	83.53, 9.06, 7.23
CIE LCh	84, 11.588, 38.576
Yxy	63.1701, 0.3408, 0.3368
Android (android.graphics.Color)	4293380803 (0xFFE7CAC3)
YUV	209.8730, -7.3324, 18.5284
Hunter-Lab	79.4796, 4.4791, 10.5388

Details

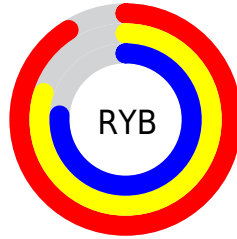
The Hex color **E7CAC3** is a light color, and the websafe version is hex **FFCCCC**. A complement of this color would be **C3E0E7**, and the grayscale version is **D2D2D2**.

A 20% lighter version of the original color is **FFFFFFC**, and **AF948D** is the 20% darker color. If you saturate the color by 10%, you get **E7B7AC**, and if you desaturate by 10%, it is **E7DDDA**.

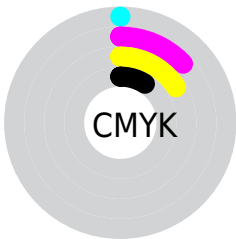
Distribution



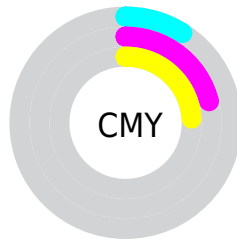
- Red (91%)
- Green (79%)
- Blue (76%)



- Red (91%)
- Yellow (80%)
- Blue (76%)



- Cyan (0%)
- Magenta (13%)
- Yellow (16%)
- Black (9%)



- Cyan (9%)
- Magenta (21%)
- Yellow (24%)

Brightness & Saturation Gradients

These gradients show how the Hex color E7CAC3 changes by changing the brightness by 10 percent. The first figure shows a shift by +10% for each color and the second figure -10%.

Similar to the brightness gradients but the following saturation gradients show a change of the Hex color E7CAC3 by changing the saturation by 10% instead.

 E7CAC3

 E7CAC3

FFFFFFF

 CBAFA8

FFFFFFC

 AF948D

 947A74

 7A615B

 614944

 49332E

 321E19

 1E0500

 000000

 E7CAC3

 E7CAC3

 E7B7AC

 E7DDDA

 E7A595

 E7EFF1

 E7927E

 E7FFFF

 E78067

 E76D4F

 E75A38

 E74821

 E7350A

 E72D00

Harmonies

Analogous

The Analogous color harmony consists of three colors that are next to each other on the color wheel.



E7C9CD



E7CAC3



E1CDBC

Triad

The Triadic color harmony groups three colors that are evenly spaced from another and form a triangle on the color wheel.



E7CAC3



BED6C8



C9D0E6

Complementary

The Complementary color scheme is a pair of colors which are on the opposite of each other on the color wheel.



E7CAC3



C3E0E7

Split Complementary

Split-complementary colors differ from the complementary color scheme. The scheme consists of three colors, the original color and two neighbors of the complement color.



BCD3E4



E7CAC3



B6D7D3

Square

The Square scheme is like the rectangle color scheme, but the four colors are evenly spaced on the color wheel.



E7CAC3



C9D4BF



B6D6DD



D6CCE1

Rectangle

The Rectangle color scheme consists of four colors that form a rectangle on the color wheel.



E7CAC3



DACFBB



B6D6DD



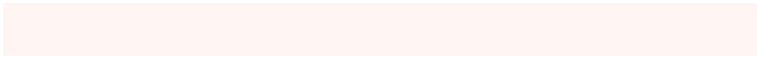
C4D1E6

Sweetspot

The Sweet Spot groups the original color and five complimentary colors.



E7CAC3



FFF5F2



E7C3E0



807978



000000



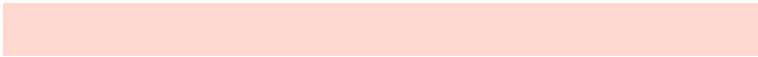
808080

Same Dimension

The Same Dimension uses a secret algorithm to generate beautiful new colors.



E7CAC3



FFD8CF



E7DCC3



736A67



B32300



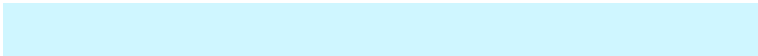
330A00

Inverse Universe

The Inverse Universe completely reimagines the original color for something new.



C3E0E7



CFF6FF



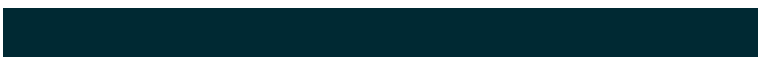
C3CEE7



677173



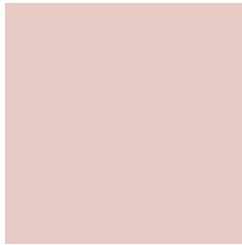
0090B3



002933

Previews

White Background



This preview shows how the Hex color E7CAC3 looks on a white background.

Color Contrast Check

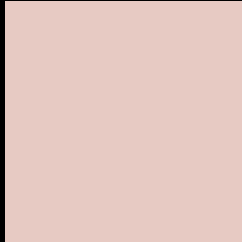
Large Text (above 18pt) WCAG AA × Fail

Any Text WCAG AA × Fail

Large Text (above 18pt) WCAG AAA × Fail

Any Text WCAG AAA × Fail

Black Background



This preview shows how the Hex color E7CAC3 looks on a black background.

Color Contrast Check

Large Text (above 18pt) WCAG AA ✓ Pass

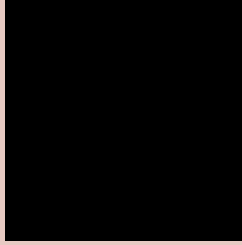
Any Text WCAG AA ✓ Pass

Large Text (above 18pt) WCAG AAA ✓ Pass

Any Text WCAG AAA ✓ Pass

If you want to check with other color combinations, try the [Color Contrast Checker](#).

Hex E7CAC3 Background



This preview shows how black text looks on a background with the Hex color E7CAC3.

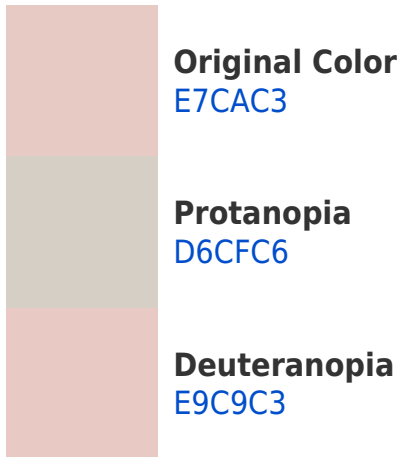


This preview shows how white text looks on a background with the Hex color E7CAC3.

Color Blindness Simulation

Color vision deficiency is a very complex topic, and I could not describe the different causes any better than Wikipedia does, so if you want to learn more, you should check out their [article about color blindness](#).

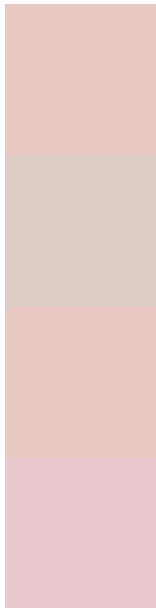
Dichromacy





Tritanopia
EAC7D7

Trichromacy



Original Color
E7CAC3

Protanomaly
DCCDC5

Deuteranomaly
E8C9C3

Tritanomaly
E9C8D0

Monochromacy



Original Color
E7CAC3

Achromatopsia
D2D2D2

Achromatomaly
DACFCD

CSS Examples

Text

The CSS property to change the color of the text to Hex E7CAC3 is called "color". The color property can be set on classes, ids or directly on the HTML element.

This example shows how text in the color #E7CAC3 looks like.

```
.text, #text, p{  
    color:#E7CAC3  
}
```

If you want to add a text shadow in that color use the text-shadow property, you can generate a text shadow directly with our [CSS Text Shadow Generator](#).

Here you see how black text with a 4 pixel #E7CAC3 colored shadow looks like.

```
.shadow{ text-shadow: 4px 4px 2px #E7CAC3
}
```

Border

The CSS property to change the border of an element to Hex E7CAC3 is called "border". The border property can be set on classes, ids or directly on the HTML element.

This example shows the color as border, it can be applied via the CSS property "border" or "border-color".

```
.border, #border, table{ border:4px solid
#E7CAC3 }
```

If only the border color should be changed use the property `border-color`.

```
.border{ border-color:#E7CAC3 }
```

If you want to add a box shadow in that color use:

Here you see how a box with a 4 pixel #E7CAC3 colored shadow looks like.

```
.boxshadow{ -moz-box-shadow:4px 4px 4px  
4px #E7CAC3; -webkit-box-shadow:4px 4px  
4px 4px #E7CAC3; box-shadow:4px 4px 4px  
4px #E7CAC3 }
```

Background

The CSS property to change the background color of an element to Hex E7CAC3 is called "background". The background property can be set on classes, ids or directly on the HTML element.

```
.background, #background, body{  
background:#E7CAC3 }
```

If only the background color should be changed can be used:

```
.background{ background-color:#E7CAC3 }
```

This example shows the color as background, it is applied via the CSS property "background".

To optimize and compress your CSS code, you can use our [online CSS compressor and optimizer](#) based on csstidy. If you want to create a linear or radial gradient as background or border, check our [CSS Gradient Generator](#).

Hey! You found this booklet interesting? Support Converting Colors with the new Membership Option!

The pro membership hides all ads, plus gives you double the colors in the color bucket, and more awesome pro features!

[Learn more, Memberships starting at \\$2.50/m!](#)

**Follow me
on Twitter!**

@ConvertingColor