

Converting Colors

Hex(E7D8CB)

Have a look what the booklet for
Hex(E7D8CB) contains.

| | |
|--|----|
| Hex(E7D8CB) | 3 |
| <i>Conversions</i> | 4 |
| <i>Details</i> | 6 |
| <i>Harmonies</i> | 11 |
| <i>Previews</i> | 23 |
| <i>Color Blindness Simulation</i> | 26 |
| <i>CSS Examples</i> | 29 |

Color

Hex(E7D8CB)

Conversions

Conversions Part 1

| Format | Color |
|-------------|----------------------------|
| Hex | E7D8CB |
| RGB | 231, 216, 203 |
| RGB Percent | 91%, 85%, 80% |
| CMY | 0.0941, 0.1529, 0.2039 |
| CMYK | 0.00, 0.06, 0.12, 0.09 |
| HSL | 28°, 37%, 85% |
| HSV | 28°, 12%, 91% |
| XYZ | 68.2904, 70.4125, 66.4916 |
| YIQ | 219.0030, 13.1130, -0.8630 |

Conversions

Conversions Part 2

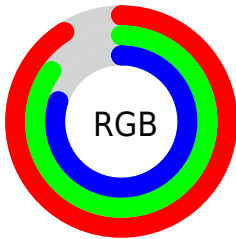
| Format | Color |
|-------------------------------------|-------------------------------|
| R _Y B | 231, 227, 203 |
| Decimal | 15194315 |
| CIE Lab | 87.20, 3.00, 8.25 |
| CIE LCh | 87, 8.779, 69.984 |
| Yxy | 70.4125, 0.3328, 0.3431 |
| Android (android.graphics.Color) | 4293384395 (0xFFE7D8CB) |
| YUV | 219.0030, -7.8895, 10.5214 |
| Hunter-Lab | 83.9121, -1.5773, 11.7574 |

Details

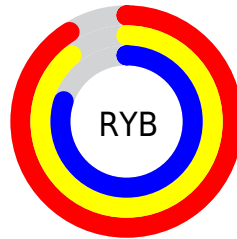
The Hex color **E7D8CB** is a light color, and the websafe version is hex **CCCCCC**. A complement of this color would be **CBDAE7**, and the grayscale version is **DBDBDB**.

A 20% lighter version of the original color is **FFFFFF**, and **AFA195** is the 20% darker color. If you saturate the color by 10%, you get **E7CCB4**, and if you desaturate by 10%, it is **E7E4E2**.

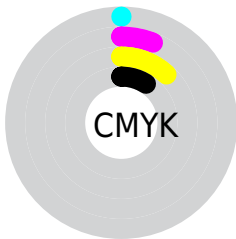
Distribution



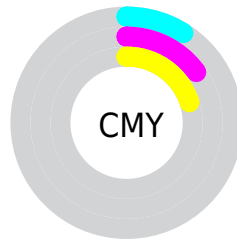
- Red (91%)
- Green (85%)
- Blue (80%)



- Red (91%)
- Yellow (89%)
- Blue (80%)



- Cyan (0%)
- Magenta (6%)
- Yellow (12%)
- Black (9%)



- Cyan (9%)
- Magenta (15%)
- Yellow (20%)

Brightness & Saturation Gradients

These gradients show how the Hex color E7D8CB changes by changing the brightness by 10 percent. The first figure shows a shift by +10% for each color and the second figure -10%.

Similar to the brightness gradients but the following saturation gradients show a change of the Hex color E7D8CB by changing the saturation by 10% instead.

 E7D8CB

FFFFFF

 E7D8CB

 CBBCB0

 AFA195

 95877B

 7B6E62

 62554A

 4A3E34

 33281F

 1E1406

 000000

 E7D8CB

 E7D8CB

 E7CCB4

 E7E4E2

 E7BF9D

 E7F1F9

 E7B386

 E7FDFF

 E7A76F

 E7FFFF

 E79A58

 E78E40

 E78129

 E77512

 E76B00

Harmonies

Analogous

The Analogous color harmony consists of three colors that are next to each other on the color wheel.



ECD6D0



E7D8CB



DFDBCA

Triad

The Triadic color harmony groups three colors that are evenly spaced from another and form a triangle on the color wheel.



E7D8CB



C7E0DD



E0D7E7

Complementary

The Complementary color scheme is a pair of colors which are on the opposite of each other on the color wheel.



E7D8CB



CBDAE7

Split Complementary

Split-complementary colors differ from the complementary color scheme. The scheme consists of three colors, the original color and two neighbors of the complement color.



D5DAEB



E7D8CB



C7DFE5

Square

The Square scheme is like the rectangle color scheme, but the four colors are evenly spaced on the color wheel.



E7D8CB



CCDFD4



CCDDEA



E8D6E0

Rectangle

The Rectangle color scheme consists of four colors that form a rectangle on the color wheel.



E7D8CB



D8DCCC



CCDDEA



DCD8E9

Sweetspot

The Sweet Spot groups the original color and five complimentary colors.



E7D8CB



FFFAF5



E7CBDA



807C79



000000



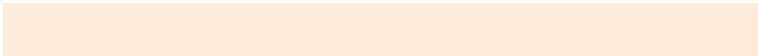
808080

Same Dimension

The Same Dimension uses a secret algorithm to generate beautiful new colors.



E7D8CB



FFEBD9



E7E6CB



736D67



B35300



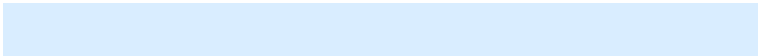
331800

Inverse Universe

The Inverse Universe completely reimagines the original color for something new.



CBDAE7



D9EDFF



CBCCE7



676D73



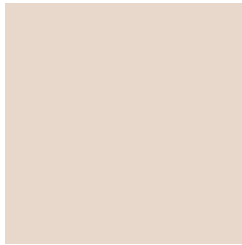
0060B3



001B33

Previews

White Background



This preview shows how the Hex color E7D8CB looks on a white background.

Color Contrast Check

Large Text (above 18pt) WCAG AA × Fail

Any Text WCAG AA × Fail

Large Text (above 18pt) WCAG AAA × Fail

Any Text WCAG AAA × Fail

Black Background



This preview shows how the Hex color E7D8CB looks on a black background.

Color Contrast Check

Large Text (above 18pt) WCAG AA ✓ Pass

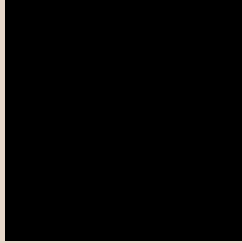
Any Text WCAG AA ✓ Pass

Large Text (above 18pt) WCAG AAA ✓ Pass

Any Text WCAG AAA ✓ Pass

If you want to check with other color combinations, try the [Color Contrast Checker](#).

Hex E7D8CB Background



This preview shows how black text looks on a background with the Hex color E7D8CB.

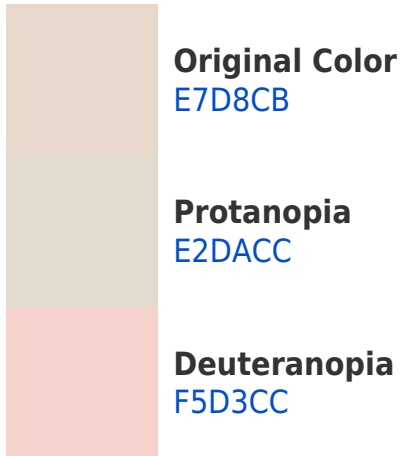


This preview shows how white text looks on a background with the Hex color E7D8CB.

Color Blindness Simulation

Color vision deficiency is a very complex topic, and I could not describe the different causes any better than Wikipedia does, so if you want to learn more, you should check out their [article about color blindness](#).

Dichromacy





Tritanopia
EBD4E5

Trichromacy



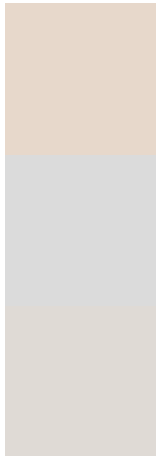
Original Color
E7D8CB

Protanomaly
E4D9CC

Deuteranomaly
F0D5CC

Tritanomaly
EAD5DC

Monochromacy



Original Color
E7D8CB

Achromatopsia
DBDBDB

Achromatomaly
DFDAD5

CSS Examples

Text

The CSS property to change the color of the text to Hex E7D8CB is called "color". The color property can be set on classes, ids or directly on the HTML element.

This example shows how text in the color #E7D8CB looks like.

```
.text, #text, p{  
    color:#E7D8CB  
}
```

If you want to add a text shadow in that color use the text-shadow property, you can generate a text shadow directly with our [CSS Text Shadow Generator](#).

Here you see how black text with a 4 pixel #E7D8CB colored shadow looks like.

```
.shadow{ text-shadow: 4px 4px 2px #E7D8CB
}
```

Border

The CSS property to change the border of an element to Hex E7D8CB is called "border". The border property can be set on classes, ids or directly on the HTML element.

This example shows the color as border, it can be applied via the CSS property "border" or "border-color".

```
.border, #border, table{ border:4px solid
#E7D8CB }
```

If only the border color should be changed use the property `border-color`.

```
.border{ border-color:#E7D8CB }
```

If you want to add a box shadow in that color use:

Here you see how a box with a 4 pixel #E7D8CB colored shadow looks like.

```
.boxshadow{ -moz-box-shadow:4px 4px 4px  
4px #E7D8CB; -webkit-box-shadow:4px 4px  
4px 4px #E7D8CB; box-shadow:4px 4px 4px  
4px #E7D8CB }
```

Background

The CSS property to change the background color of an element to Hex E7D8CB is called "background". The background property can be set on classes, ids or directly on the HTML element.

```
.background, #background, body{  
background:#E7D8CB }
```

If only the background color should be changed can be used:

```
.background{ background-color:#E7D8CB }
```

This example shows the color as background, it is applied via the CSS property "background".

To optimize and compress your CSS code, you can use our [online CSS compressor and optimizer](#) based on csstidy. If you want to create a linear or radial gradient as background or border, check our [CSS Gradient Generator](#).

Hey! You found this booklet interesting? Support Converting Colors with the new Membership Option!

The pro membership hides all ads, plus gives you double the colors in the color bucket, and more awesome pro features!

[Learn more, Memberships starting at \\$2.50/m!](#)

**Follow me
on Twitter!**

@ConvertingColor