

Converting Colors

Hex(E82E64)

Have a look what the booklet for
Hex(E82E64) contains.

Hex(E82E64)	3
<i>Conversions</i>	4
<i>Details</i>	6
<i>Harmonies</i>	11
<i>Previews</i>	23
<i>Color Blindness Simulation</i>	26
<i>CSS Examples</i>	29

Color

Hex(E82E64)

Conversions

Conversions Part 1

Format	Color
Hex	E82E64
RGB	232, 46, 100
RGB Percent	91%, 18%, 39%
CMY	0.0902, 0.8196, 0.6078
CMYK	0.00, 0.80, 0.57, 0.09
HSL	343°, 80%, 55%
HSV	343°, 80%, 91%
XYZ	36.5560, 20.0299, 13.9960
YIQ	107.7700, 93.5220, 56.2260

Conversions

Conversions Part 2

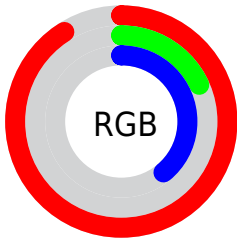
Format	Color
RYB	232, 46, 100
Decimal	15216228
CIELab	51.87, 71.07, 16.08
CIELCh	52, 72.866, 12.752
Yxy	20.0299, 0.5179, 0.2838
Android (android.graphics.Color)	4293406308 (0xFFE82E64)
YUV	107.7700, -3.8306, 108.9497
Hunter-Lab	44.7548, 67.4790, 12.7867

Details

The Hex color **E82E64** is a dark color, and the websafe version is hex **FF3366**. The color can be described as dark washed rose. A complement of this color would be **2EE8B2**, and the grayscale version is **6C6C6C**.

A 20% lighter version of the original color is **FF6F96**, and **A90036** is the 20% darker color. If you saturate the color by 10%, you get **E81754**, and if you desaturate by 10%, it is **E84574**.

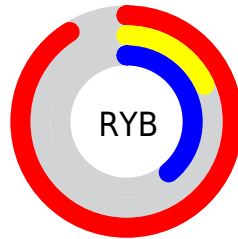
Distribution



Red (91%)

Green (18%)

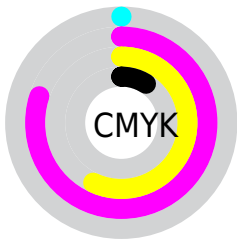
Blue (39%)



Red (91%)

Yellow (18%)

Blue (39%)

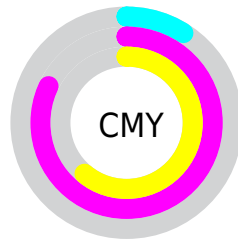


Cyan (0%)

Magenta (80%)

Yellow (57%)

Black (9%)



Cyan (9%)

Magenta (82%)

Yellow (61%)

Brightness & Saturation Gradients

These gradients show how the Hex color E82E64 changes by changing the brightness by 10 percent. The first figure shows a shift by +10% for each color and the second figure -10%.

Similar to the brightness gradients but the following saturation gradients show a change of the Hex color E82E64 by changing the saturation by 10% instead.

 E82E64

 E82E64

FFFFFF

 C8004C

 FF6F96

 A90036

 FF8DB1

 8A0021

 FFAACC

 6C000B

 FFC7E9

 4E0003

 FFE5FF

 2F0002

 000000

 E82E64

 E82E64

 E81754

 E84574

 E80043

 E85C85

 E87495

 E88BA6

 E8A2B6

 E8B9C7

 E8D0D7

 E8E8E8

 E8FFF8

Harmonies

Analogous

The Analogous color harmony consists of three colors that are next to each other on the color wheel.



D739A2



E82E64



D94C28

Triad

The Triadic color harmony groups three colors that are evenly spaced from another and form a triangle on the color wheel.



E82E64



2F8E07



008DF4

Complementary

The Complementary color scheme is a pair of colors which are on the opposite of each other on the color wheel.



E82E64



2EE8B2

Split Complementary

Split-complementary colors differ from the complementary color scheme. The scheme consists of three colors, the original color and two neighbors of the complement color.



0095D0



E82E64



009554

Square

The Square scheme is like the rectangle color scheme, but the four colors are evenly spaced on the color wheel.



E82E64



7D8100



009796



007BF7

Rectangle

The Rectangle color scheme consists of four colors that form a rectangle on the color wheel.



E82E64



C16200



009796



0091EB

Sweetspot

The Sweet Spot groups the original color and five complimentary colors.



E82E64



FFC2D4



B02EE8



805B65



000000



808080

Same Dimension

The Same Dimension uses a secret algorithm to generate beautiful new colors.



E82E64



FF0A51



E8532E



73676B



B30034



33000F

Inverse Universe

The Inverse Universe completely reimagines the original color for something new.



E82E64



FF0A51



2EC3E8



73676B



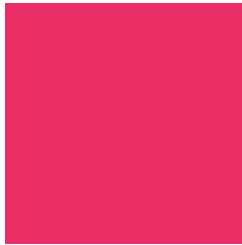
B30034



33000F

Previews

White Background



This preview shows how the Hex color E82E64 looks on a white background.

Color Contrast Check

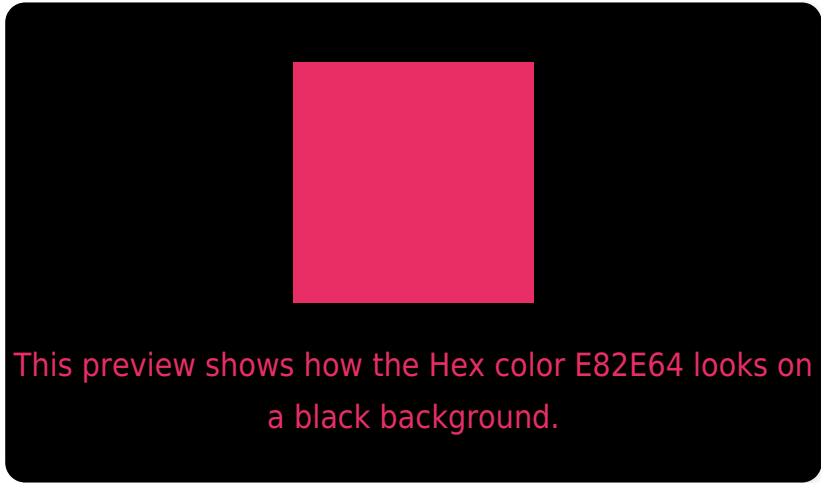
Large Text (above 18pt) WCAG AA ✓ Pass

Any Text WCAG AA × Fail

Large Text (above 18pt) WCAG AAA × Fail

Any Text WCAG AAA × Fail

Black Background



Color Contrast Check

Large Text (above 18pt) WCAG AA ✓ Pass

Any Text WCAG AA ✓ Pass

Large Text (above 18pt) WCAG AAA ✓ Pass

Any Text WCAG AAA × Fail

If you want to check with other color combinations, try the [Color Contrast Checker](#).

Hex E82E64 Background



This preview shows how black text looks on a background with the Hex color E82E64.

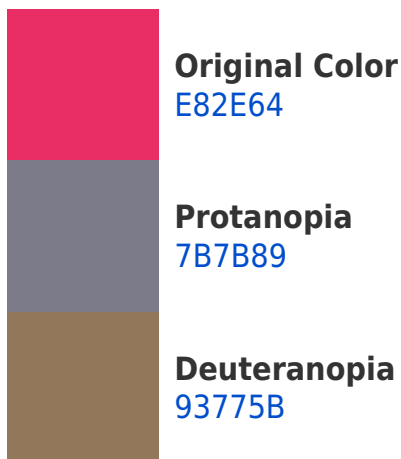


This preview shows how white text looks on a background with the Hex color E82E64.

Color Blindness Simulation

Color vision deficiency is a very complex topic, and I could not describe the different causes any better than Wikipedia does, so if you want to learn more, you should check out their [article about color blindness](#).

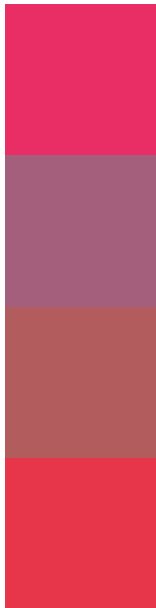
Dichromacy





Tritanopia
E6393A

Trichromacy



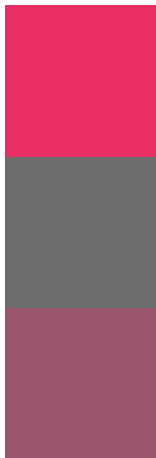
Original Color
E82E64

Protanomaly
A35F7C

Deuteranomaly
B25C5E

Tritanomaly
E73549

Monochromacy



Original Color
E82E64

Achromatopsia
6C6C6C

Achromatomaly
995569

CSS Examples

Text

The CSS property to change the color of the text to Hex E82E64 is called "color". The color property can be set on classes, ids or directly on the HTML element.

This example shows how text in the color #E82E64 looks like.

```
.text, #text, p{  
    color:#E82E64  
}
```

If you want to add a text shadow in that color use the text-shadow property, you can generate a text shadow directly with our [CSS Text Shadow Generator](#).

Here you see how black text with a 4 pixel #E82E64 colored shadow looks like.

```
.shadow{ text-shadow: 4px 4px 2px #E82E64
}
```

Border

The CSS property to change the border of an element to Hex E82E64 is called "border". The border property can be set on classes, ids or directly on the HTML element.

This example shows the color as border, it can be applied via the CSS property "border" or "border-color".

```
.border, #border, table{ border:4px solid
#E82E64 }
```

If only the border color should be changed use the property `border-color`.

```
.border{ border-color:#E82E64 }
```

If you want to add a box shadow in that color use:

Here you see how a box with a 4 pixel #E82E64 colored shadow looks like.

```
.boxshadow{ -moz-box-shadow:4px 4px 4px  
4px #E82E64; -webkit-box-shadow:4px 4px  
4px 4px #E82E64; box-shadow:4px 4px 4px  
4px #E82E64 }
```

Background

The CSS property to change the background color of an element to Hex E82E64 is called "background". The background property can be set on classes, ids or directly on the HTML element.

```
.background, #background, body{  
background:#E82E64 }
```

If only the background color should be changed can be used:

```
.background{ background-color:#E82E64 }
```

This example shows the color as background, it is applied via the CSS property "background".

To optimize and compress your CSS code, you can use our [online CSS compressor and optimizer](#) based on csstidy. If you want to create a linear or radial gradient as background or border, check our [CSS Gradient Generator](#).

Hey! You found this booklet interesting? Support Converting Colors with the new Membership Option!

The pro membership hides all ads, plus gives you double the colors in the color bucket, and more awesome pro features!

[Learn more, Memberships starting at \\$2.50/m!](#)

**Follow me
on Twitter!**

@ConvertingColor