

Converting Colors

Hex(E85378)

Have a look what the booklet for
Hex(E85378) contains.

Hex(E85378)	3
<i>Conversions</i>	4
<i>Details</i>	6
<i>Harmonies</i>	11
<i>Previews</i>	23
<i>Color Blindness Simulation</i>	26
<i>CSS Examples</i>	29

Color

Hex(E85378)

Conversions

Conversions Part 1

Format	Color
Hex	E85378
RGB	232, 83, 120
RGB Percent	91%, 33%, 47%
CMY	0.0902, 0.6745, 0.5294
CMYK	0.00, 0.64, 0.48, 0.09
HSL	345°, 76%, 62%
HSV	345°, 64%, 91%
XYZ	39.7621, 24.6984, 20.4409
YIQ	131.7690, 76.9270, 43.0950

Conversions

Conversions Part 2

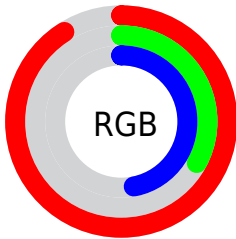
Format	Color
R_{YB}	232, 83, 120
Decimal	15225720
CIE _{Lab}	56.78, 60.24, 10.96
CIE _{LCh}	57, 61.231, 10.316
Yxy	24.6984, 0.4683, 0.2909
Android (android.graphics.Color)	4293415800 (0xFFE85378)
YUV	131.7690, -5.8021, 87.9026
Hunter-Lab	49.6975, 55.8444, 10.4019

Details

The Hex color **E85378** is a dark color, and the websafe version is hex **CC3366**. The color can be described as middle muted rose. A complement of this color would be **53E8C3**, and the grayscale version is **848484**.

A 20% lighter version of the original color is **FF8CAC**, and **AB0D48** is the 20% darker color. If you saturate the color by 10%, you get **E83C67**, and if you desaturate by 10%, it is **E86A89**.

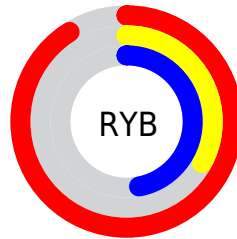
Distribution



Red (91%)

Green (33%)

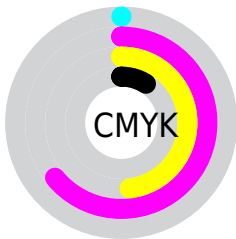
Blue (47%)



Red (91%)

Yellow (33%)

Blue (47%)

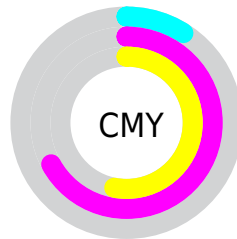


Cyan (0%)

Magenta (64%)

Yellow (48%)

Black (9%)



Cyan (9%)

Magenta (67%)

Yellow (53%)

Brightness & Saturation Gradients

These gradients show how the Hex color E85378 changes by changing the brightness by 10 percent. The first figure shows a shift by +10% for each color and the second figure -10%.

Similar to the brightness gradients but the following saturation gradients show a change of the Hex color E85378 by changing the saturation by 10% instead.

 E85378

 E85378

FFFFFF

 C9355F

 FF8CAC

 AB0D48

 FFA8C7

 8D0032

 FFC5E3

 70001D

 FFE2FF

 530002

 370002

 080000

 000000

 E85378

 E85378

 E83C67

 E86A89

 E82555

 E8819B

 E80D44

 E899AC

 E8003A

 E8B0BE

 E8C7CF

 E8DEE1

 E8F5F2

 E8FFFF

Harmonies

Analogous

The Analogous color harmony consists of three colors that are next to each other on the color wheel.



D65BAD



E85378



DE6246

Triad

The Triadic color harmony groups three colors that are evenly spaced from another and form a triangle on the color wheel.



E85378



57982F



0098ED

Complementary

The Complementary color scheme is a pair of colors which are on the opposite of each other on the color wheel.



E85378



53E8C3

Split Complementary

Split-complementary colors differ from the complementary color scheme. The scheme consists of three colors, the original color and two neighbors of the complement color.



009FCC



E85378



009F62

Square

The Square scheme is like the rectangle color scheme, but the four colors are evenly spaced on the color wheel.



E85378



918C04



00A19A



2F88F2

Rectangle

The Rectangle color scheme consists of four colors that form a rectangle on the color wheel.



E85378



CB7128



00A19A



009BE5

Sweetspot

The Sweet Spot groups the original color and five complimentary colors.



E85378



FFCFDB



C353E8



806269



000000



808080

Same Dimension

The Same Dimension uses a secret algorithm to generate beautiful new colors.



E85378



FF3B6B



E87853



73676A



B3002C



33000D

Inverse Universe

The Inverse Universe completely reimagines the original color for something new.



E85378



FF3B6B



53C3E8



73676A



B3002C



33000D

Previews

White Background



This preview shows how the Hex color E85378 looks on a white background.

Color Contrast Check

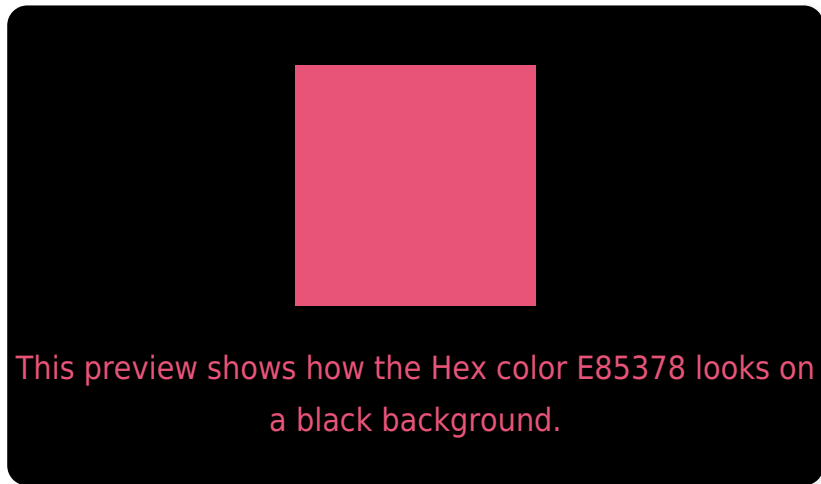
Large Text (above 18pt) WCAG AA ✓ Pass

Any Text WCAG AA ✗ Fail

Large Text (above 18pt) WCAG AAA ✗ Fail

Any Text WCAG AAA ✗ Fail

Black Background



Color Contrast Check

Large Text (above 18pt) WCAG AA ✓ Pass

Any Text WCAG AA ✓ Pass

Large Text (above 18pt) WCAG AAA ✓ Pass

Any Text WCAG AAA × Fail

If you want to check with other color combinations, try the [Color Contrast Checker](#).

Hex E85378 Background



This preview shows how black text looks on a background with the Hex color E85378.



This preview shows how white text looks on a background with the Hex color E85378.

Color Blindness Simulation

Color vision deficiency is a very complex topic, and I could not describe the different causes any better than Wikipedia does, so if you want to learn more, you should check out their [article about color blindness](#).

Dichromacy

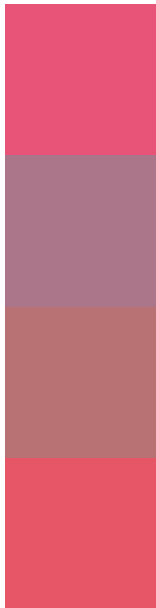


Original Color
E85378

Protanopia
888895

Deuteranopia
9E8371

Trichromacy



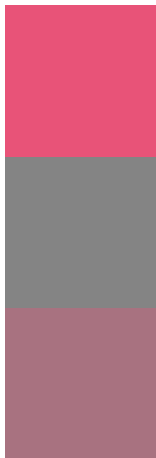
Original Color
E85378

Protanomaly
AB758A

Deuteranomaly
B97274

Tritanomaly
E75667

Monochromacy



Original Color
E85378

Achromatopsia
848484

Achromatomaly
A87280

CSS Examples

Text

The CSS property to change the color of the text to Hex E85378 is called "color". The color property can be set on classes, ids or directly on the HTML element.

This example shows how text in the color #E85378 looks like.

```
.text, #text, p{  
    color:#E85378  
}
```

If you want to add a text shadow in that color use the text-shadow property, you can generate a text shadow directly with our [CSS Text Shadow Generator](#).

Here you see how black text with a 4 pixel #E85378 colored shadow looks like.

```
.shadow{ text-shadow: 4px 4px 2px #E85378
}
```

Border

The CSS property to change the border of an element to Hex E85378 is called "border". The border property can be set on classes, ids or directly on the HTML element.

This example shows the color as border, it can be applied via the CSS property "border" or "border-color".

```
.border, #border, table{ border:4px solid
#E85378 }
```

If only the border color should be changed use the property `border-color`.

```
.border{ border-color:#E85378 }
```

If you want to add a box shadow in that color use:

Here you see how a box with a 4 pixel #E85378 colored shadow looks like.

```
.boxshadow{ -moz-box-shadow:4px 4px 4px  
4px #E85378; -webkit-box-shadow:4px 4px  
4px 4px #E85378; box-shadow:4px 4px 4px  
4px #E85378 }
```

Background

The CSS property to change the background color of an element to Hex E85378 is called "background". The background property can be set on classes, ids or directly on the HTML element.

```
.background, #background, body{  
background:#E85378 }
```

If only the background color should be changed can be used:

```
.background{ background-color:#E85378 }
```

This example shows the color as background, it is applied via the CSS property "background".

To optimize and compress your CSS code, you can use our [online CSS compressor and optimizer](#) based on csstidy. If you want to create a linear or radial gradient as background or border, check our [CSS Gradient Generator](#).

Hey! You found this booklet interesting? Support Converting Colors with the new Membership Option!

The pro membership hides all ads, plus gives you double the colors in the color bucket, and more awesome pro features!

[Learn more, Memberships starting at \\$2.50/m!](#)

**Follow me
on Twitter!**

@ConvertingColor