

# Converting Colors

Hex(E85E94)

Have a look what the booklet for  
Hex(E85E94) contains.

<b>Hex(E85E94)</b> .....	3
<i><b>Conversions</b></i> .....	4
<i><b>Details</b></i> .....	6
<i><b>Harmonies</b></i> .....	11
<i><b>Previews</b></i> .....	23
<i><b>Color Blindness Simulation</b></i> .....	26
<i><b>CSS Examples</b></i> .....	29

# **Color**

**Hex(E85E94)**

# Conversions

## Conversions Part 1

Format	Color
Hex	E85E94
RGB	232, 94, 148
RGB Percent	91%, 37%, 58%
CMY	0.0902, 0.6314, 0.4196
CMYK	0.00, 0.59, 0.36, 0.09
HSL	337°, 75%, 64%
HSV	337°, 59%, 91%
XYZ	42.6267, 27.2993, 31.0396
YIQ	141.4180, 64.9140, 46.0500

# Conversions

## Conversions Part 2

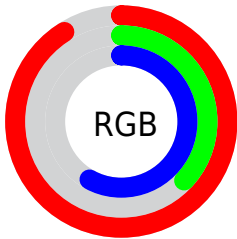
<b>Format</b>	<b>Color</b>
<b>R<sub>YB</sub></b>	232, 94, 148
Decimal	15228564
CIE <sub>Lab</sub>	59.25, 58.37, -1.89
CIE <sub>LCh</sub>	59, 58.398, 358.149
Yxy	27.2993, 0.4222, 0.2704
Android (android.graphics.Color)	4293418644 (0xFFE85E94)
YUV	141.4180, 3.2449, 79.4404
Hunter-Lab	52.2488, 54.1924, 1.3515

# Details

The Hex color **E85E94** is a light color, and the websafe version is hex **FF6699**. The color can be described as light muted rose. A complement of this color would be **5EE8B2**, and the grayscale version is **8D8D8D**.

A 20% lighter version of the original color is **FF96CA**, and **AC2262** is the 20% darker color. If you saturate the color by 10%, you get **E84786**, and if you desaturate by 10%, it is **E875A2**.

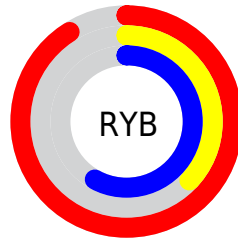
# Distribution



Red (91%)

Green (37%)

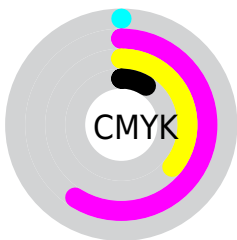
Blue (58%)



Red (91%)

Yellow (37%)

Blue (58%)

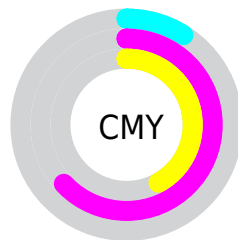


Cyan (0%)

Magenta (59%)

Yellow (36%)

Black (9%)



Cyan (9%)

Magenta (63%)

Yellow (42%)

# Brightness & Saturation Gradients

These gradients show how the Hex color E85E94 changes by changing the brightness by 10 percent. The first figure shows a shift by +10% for each color and the second figure -10%.

Similar to the brightness gradients but the following saturation gradients show a change of the Hex color E85E94 by changing the saturation by 10% instead.



 E85E94

 E85E94

FFFFFF

 CA427A

 FF96CA

 AC2262

 FFB2E6

 8F004A

 FFCFFF

 720033

 FFECFF

 56001F

 3D0004

 190001

 000000

 E85E94

 E85E94

 E84786

 E875A2

 E83078

 E88CB0

 E8186A

 E8A4BE

 E8015C

 E8BBCC

 E8005B

 E8D2DB

 E8E9E9

 E8FFF7

 E8FFFF

# Harmonies

## Analogous

The Analogous color harmony consists of three colors that are next to each other on the color wheel.



CA6CC6



E85E94



E96461

# Triad

The Triadic color harmony groups three colors that are evenly spaced from another and form a triangle on the color wheel.



E85E94



799A2B



00A1E5

# Complementary

The Complementary color scheme is a pair of colors which are on the opposite of each other on the color wheel.



E85E94



5EE8B2

# Split Complementary

Split-complementary colors differ from the complementary color scheme. The scheme consists of three colors, the original color and two neighbors of the complement color.



00A7BE



E85E94



2DA356

# Square

The Square scheme is like the rectangle color scheme, but the four colors are evenly spaced on the color wheel.



E85E94



AC8B1C



00A78A



0095F5

# Rectangle

The Rectangle color scheme consists of four colors that form a rectangle on the color wheel.



E85E94



DC7043



00A78A



00A4DA



# Sweetspot

The Sweet Spot groups the original color and five complimentary colors.



E85E94



FFD1E3



B15EE8



80636E



000000



808080



# Same Dimension

The Same Dimension uses a secret algorithm to generate beautiful new colors.



E85E94



FF4A91



E86C5E



73676C



B30046



330014



# Inverse Universe

The Inverse Universe completely reimagines the original color for something new.



E85E94



FF4A91



5EDAE8



73676C



B30046



330014



# Previews

## White Background



This preview shows how the Hex color E85E94 looks on a white background.

## Color Contrast Check

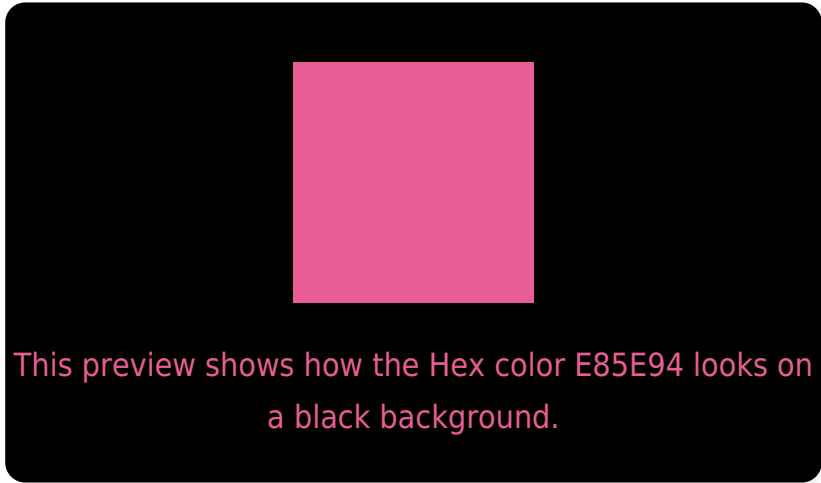
Large Text (above 18pt) WCAG AA ✓ Pass

Any Text WCAG AA × Fail

Large Text (above 18pt) WCAG AAA × Fail

Any Text WCAG AAA × Fail

# Black Background



## Color Contrast Check

Large Text (above 18pt) WCAG AA ✓ Pass

Any Text WCAG AA ✓ Pass

Large Text (above 18pt) WCAG AAA ✓ Pass

Any Text WCAG AAA × Fail

If you want to check with other color combinations, try the [Color Contrast Checker](#).



## Hex E85E94 Background



This preview shows how black text looks on a background with the Hex color E85E94.




This preview shows how white text looks on a background with the Hex color E85E94.

# Color Blindness Simulation

Color vision deficiency is a very complex topic, and I could not describe the different causes any better than Wikipedia does, so if you want to learn more, you should check out their [article about color blindness](#).

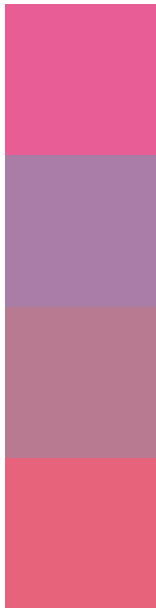
## Dichromacy





**Tritanopia**  
E5666D

# Trichromacy



**Original Color**  
E85E94

**Protanomaly**  
AA7DA7

**Deuteranomaly**  
B87A90

**Tritanomaly**  
E6637B

# Monochromacy



**Original Color**  
E85E94

**Achromatopsia**  
8D8D8D

**Achromatomaly**  
AE7C90

# CSS Examples

## Text

The CSS property to change the color of the text to Hex E85E94 is called "color". The color property can be set on classes, ids or directly on the HTML element.

This example shows how text in the color #E85E94 looks like.

```
.text, #text, p{  
    color:#E85E94  
}
```

If you want to add a text shadow in that color use the text-shadow property, you can generate a text shadow directly with our [CSS Text Shadow Generator](#).

Here you see how black text with a 4 pixel #E85E94 colored shadow looks like.

```
.shadow{ text-shadow: 4px 4px 2px #E85E94
}
```

## Border

The CSS property to change the border of an element to Hex E85E94 is called "border". The border property can be set on classes, ids or directly on the HTML element.

This example shows the color as border, it can be applied via the CSS property "border" or "border-color".

```
.border, #border, table{ border:4px solid
#E85E94 }
```

If only the border color should be changed use the property `border-color`.

```
.border{ border-color:#E85E94 }
```

If you want to add a box shadow in that color use:

Here you see how a box with a 4 pixel #E85E94 colored shadow looks like.

```
.boxshadow{ -moz-box-shadow:4px 4px 4px  
4px #E85E94; -webkit-box-shadow:4px 4px  
4px 4px #E85E94; box-shadow:4px 4px 4px  
4px #E85E94 }
```

# Background

The CSS property to change the background color of an element to Hex E85E94 is called "background". The background property can be set on classes, ids or directly on the HTML element.

```
.background, #background, body{  
background:#E85E94 }
```

If only the background color should be changed can be used:

```
.background{ background-color:#E85E94 }
```

This example shows the color as background, it is applied via the CSS property "background".

To optimize and compress your CSS code, you can use our [online CSS compressor and optimizer](#) based on csstidy. If you want to create a linear or radial gradient as background or border, check our [CSS Gradient Generator](#).



Hey! You found this booklet interesting? Support Converting Colors with the new Membership Option!

The pro membership hides all ads, plus gives you double the colors in the color bucket, and more awesome pro features!

**[Learn more, Memberships starting at \\$2.50/m!](#)**

**Follow me  
on Twitter!**

@ConvertingColor