

Converting Colors

Hex(E864D4)

Have a look what the booklet for
Hex(E864D4) contains.

Hex(E864D4)	3
<i>Conversions</i>	4
<i>Details</i>	6
<i>Harmonies</i>	11
<i>Previews</i>	23
<i>Color Blindness Simulation</i>	26
<i>CSS Examples</i>	29

Color

Hex(E864D4)

Conversions

Conversions Part 1

Format	Color
Hex	E864D4
RGB	232, 100, 212
RGB Percent	91%, 39%, 83%
CMY	0.0902, 0.6078, 0.1686
CMYK	0.00, 0.57, 0.09, 0.09
HSL	309°, 74%, 65%
HSV	309°, 57%, 91%
XYZ	49.7195, 31.0236, 65.6550
YIQ	152.2360, 42.7200, 62.8160

Conversions

Conversions Part 2

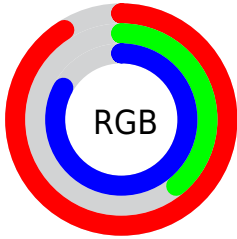
Format	Color
R _Y B	232, 100, 212
Decimal	15230164
CIE Lab	62.53, 64.39, -33.57
CIE LCh	63, 72.618, 332.462
Yxy	31.0236, 0.3396, 0.2119
Android (android.graphics.Color)	4293420244 (0xFFE864D4)
YUV	152.2360, 29.4637, 69.9530
Hunter-Lab	55.6988, 61.8650, -30.8989

Details

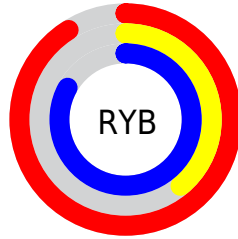
The Hex color **E864D4** is a light color, and the websafe version is hex **CC66CC**. A complement of this color would be **64E878**, and the grayscale version is **989898**.

A 20% lighter version of the original color is **FF9DFF**, and **AD279D** is the 20% darker color. If you saturate the color by 10%, you get **E84DD0**, and if you desaturate by 10%, it is **E87BD8**.

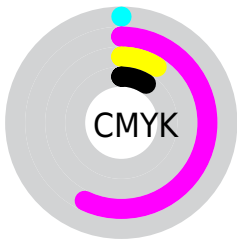
Distribution



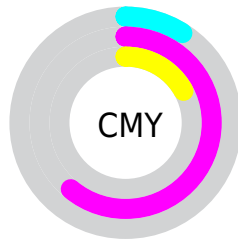
- Red (91%)
- Green (39%)
- Blue (83%)



- Red (91%)
- Yellow (39%)
- Blue (83%)



- Cyan (0%)
- Magenta (57%)
- Yellow (9%)
- Black (9%)



- Cyan (9%)
- Magenta (61%)
- Yellow (17%)

Brightness & Saturation Gradients

These gradients show how the Hex color E864D4 changes by changing the brightness by 10 percent. The first figure shows a shift by +10% for each color and the second figure -10%.

Similar to the brightness gradients but the following saturation gradients show a change of the Hex color E864D4 by changing the saturation by 10% instead.

 E864D4

 E864D4

FFFFFF

 CA47B8

 FF9DFF

 AD279D

 FFB9FF

 910083

 FFD6FF

 750069

 FFF4FF

 590051

 400039

 240023

 000008

 000000

 E864D4

 E864D4

 E84DD0

 E87BD8

 E836CD

 E892DB

 E81EC9

 E8AADF

 E807C6

 E8C1E2

 E800C5

 E8D8E6

 E8EFE9

 E8FFED

 E8FFF0

 E8FFF4

Harmonies

Analogous

The Analogous color harmony consists of three colors that are next to each other on the color wheel.



9C83FF



E864D4



FF5295

Triad

The Triadic color harmony groups three colors that are evenly spaced from another and form a triangle on the color wheel.



E864D4



B09600



00B4DB

Complementary

The Complementary color scheme is a pair of colors which are on the opposite of each other on the color wheel.



E864D4



64E878

Split Complementary

Split-complementary colors differ from the complementary color scheme. The scheme consists of three colors, the original color and two neighbors of the complement color.



00B49B



E864D4



6FA713

Square

The Square scheme is like the rectangle color scheme, but the four colors are evenly spaced on the color wheel.



E864D4



E37D19



00B058



00ADFF

Rectangle

The Rectangle color scheme consists of four colors that form a rectangle on the color wheel.



E864D4



FF586A



00B058



00B4C7

Sweetspot

The Sweet Spot groups the original color and five complimentary colors.



E864D4



FFD4F8



7864E8



80667C



000000



808080

Same Dimension

The Same Dimension uses a secret algorithm to generate beautiful new colors.



E864D4



FF52E5



E86492



736771



B30097



33002B

Inverse Universe

The Inverse Universe completely reimagines the original color for something new.



E864D4



FF52E5



64E8BA



736771



B30097



33002B

Previews

White Background



This preview shows how the Hex color E864D4 looks on a white background.

Color Contrast Check

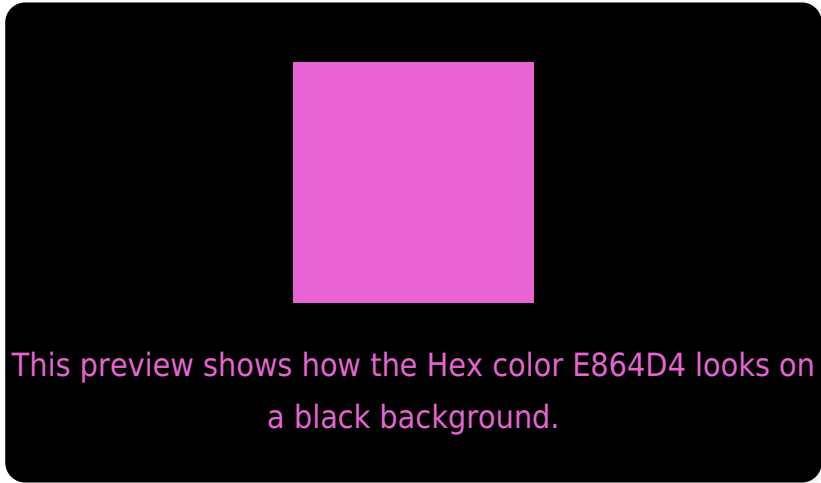
Large Text (above 18pt) WCAG AA × Fail

Any Text WCAG AA × Fail

Large Text (above 18pt) WCAG AAA × Fail

Any Text WCAG AAA × Fail

Black Background



Color Contrast Check

Large Text (above 18pt) WCAG AA ✓ Pass

Any Text WCAG AA ✓ Pass

Large Text (above 18pt) WCAG AAA ✓ Pass

Any Text WCAG AAA ✓ Pass

If you want to check with other color combinations, try the [Color Contrast Checker](#).

Hex E864D4 Background



This preview shows how black text looks on a background with the Hex color E864D4.

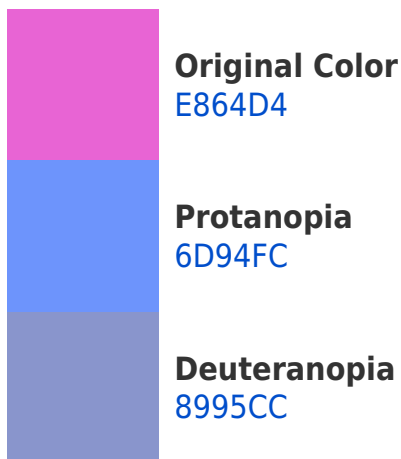


This preview shows how white text looks on a background with the Hex color E864D4.

Color Blindness Simulation

Color vision deficiency is a very complex topic, and I could not describe the different causes any better than Wikipedia does, so if you want to learn more, you should check out their [article about color blindness](#).

Dichromacy





Tritanopia
DF7982

Trichromacy



Original Color
E864D4



Protanomaly
9A83ED



Deuteranomaly
AC83CF



Tritanomaly
E271A0

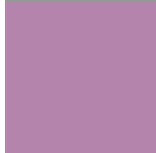
Monochromacy



Original Color
E864D4



Achromatopsia
989898



Achromatomaly
B585AE

CSS Examples

Text

The CSS property to change the color of the text to Hex E864D4 is called "color". The color property can be set on classes, ids or directly on the HTML element.

This example shows how text in the color #E864D4 looks like.

```
.text, #text, p{  
    color:#E864D4  
}
```

If you want to add a text shadow in that color use the text-shadow property, you can generate a text shadow directly with our [CSS Text Shadow Generator](#).

Here you see how black text with a 4 pixel #E864D4 colored shadow looks like.

```
.shadow{ text-shadow: 4px 4px 2px #E864D4
}
```

Border

The CSS property to change the border of an element to Hex E864D4 is called "border". The border property can be set on classes, ids or directly on the HTML element.

This example shows the color as border, it can be applied via the CSS property "border" or "border-color".

```
.border, #border, table{ border:4px solid
#E864D4 }
```

If only the border color should be changed use the property `border-color`.

```
.border{ border-color:#E864D4 }
```

If you want to add a box shadow in that color use:

Here you see how a box with a 4 pixel #E864D4 colored shadow looks like.

```
.boxshadow{ -moz-box-shadow:4px 4px 4px  
4px #E864D4; -webkit-box-shadow:4px 4px  
4px 4px #E864D4; box-shadow:4px 4px 4px  
4px #E864D4 }
```

Background

The CSS property to change the background color of an element to Hex E864D4 is called "background". The background property can be set on classes, ids or directly on the HTML element.

```
.background, #background, body{  
background:#E864D4 }
```

If only the background color should be changed can be used:

```
.background{ background-color:#E864D4 }
```

This example shows the color as background, it is applied via the CSS property "background".

To optimize and compress your CSS code, you can use our [online CSS compressor and optimizer](#) based on csstidy. If you want to create a linear or radial gradient as background or border, check our [CSS Gradient Generator](#).

Hey! You found this booklet interesting? Support Converting Colors with the new Membership Option!

The pro membership hides all ads, plus gives you double the colors in the color bucket, and more awesome pro features!

[Learn more, Memberships starting at \\$2.50/m!](#)

**Follow me
on Twitter!**

@ConvertingColor