

Converting Colors

Hex(E86795)

Have a look what the booklet for
Hex(E86795) contains.

Hex(E86795)	3
<i>Conversions</i>	4
<i>Details</i>	6
<i>Harmonies</i>	11
<i>Previews</i>	23
<i>Color Blindness Simulation</i>	26
<i>CSS Examples</i>	29

Color

Hex(E86795)

Conversions

Conversions Part 1

Format	Color
Hex	E86795
RGB	232, 103, 149
RGB Percent	91%, 40%, 58%
CMY	0.0902, 0.5961, 0.4157
CMYK	0.00, 0.56, 0.36, 0.09
HSL	339°, 74%, 66%
HSV	339°, 56%, 91%
XYZ	43.5538, 29.0262, 31.7409
YIQ	146.8150, 62.1180, 41.6540

Conversions

Conversions Part 2

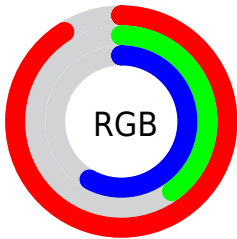
Format	Color
R _Y B	232, 103, 149
Decimal	15230869
CIE Lab	60.80, 54.42, -0.19
CIE LCh	61, 54.423, 359.800
Yxy	29.0262, 0.4175, 0.2782
Android (android.graphics.Color)	4293420949 (0xFFE86795)
YUV	146.8150, 1.0772, 74.7072
Hunter-Lab	53.8760, 50.0178, 2.7827

Details

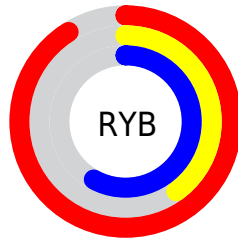
The Hex color **E86795** is a light color, and the websafe version is hex **FF6699**. A complement of this color would be **67E8BA**, and the grayscale version is **939393**.

A 20% lighter version of the original color is **FF9ECB**, and **AD2F62** is the 20% darker color. If you saturate the color by 10%, you get **E85086**, and if you desaturate by 10%, it is **E87EA4**.

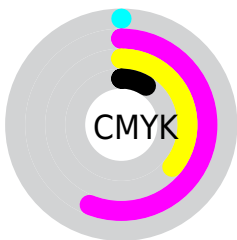
Distribution



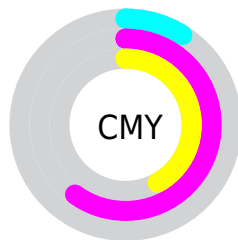
- Red (91%)
- Green (40%)
- Blue (58%)



- Red (91%)
- Yellow (40%)
- Blue (58%)



- Cyan (0%)
- Magenta (56%)
- Yellow (36%)
- Black (9%)



- Cyan (9%)
- Magenta (60%)
- Yellow (42%)

Brightness & Saturation Gradients

These gradients show how the Hex color E86795 changes by changing the brightness by 10 percent. The first figure shows a shift by +10% for each color and the second figure -10%.

Similar to the brightness gradients but the following saturation gradients show a change of the Hex color E86795 by changing the saturation by 10% instead.

 E86795

 E86795

FFFFFF

 CA4B7B

 FF9ECB

 AD2F62

 FFBBE7

 90084B

 FFD7FF

 730034

 FFF5FF

 57001F

 3E0006

 1C0001

 000000

 E86795

 E86795

 E85086

 E87EA4

 E83977

 E895B3

 E82168

 E8ADC2

 E80A59

 E8C4D1

 E80053

 E8DBE0

 E8F2EF

 E8FFFD

 E8FFFF

Harmonies

Analogous

The Analogous color harmony consists of three colors that are next to each other on the color wheel.



CD72C4



E86795



E86D66

Triad

The Triadic color harmony groups three colors that are evenly spaced from another and form a triangle on the color wheel.



E86795



7D9E3A



00A4E5

Complementary

The Complementary color scheme is a pair of colors which are on the opposite of each other on the color wheel.



E86795



67E8BA

Split Complementary

Split-complementary colors differ from the complementary color scheme. The scheme consists of three colors, the original color and two neighbors of the complement color.



00A9C1



E86795



38A660

Square

The Square scheme is like the rectangle color scheme, but the four colors are evenly spaced on the color wheel.



E86795



AD902B



00AA91



0C98F3

Rectangle

The Rectangle color scheme consists of four colors that form a rectangle on the color wheel.



E86795



DC784B



00AA91



00A6DB

Sweetspot

The Sweet Spot groups the original color and five complimentary colors.



E86795



FFD4E3



B967E8



80666F



000000



808080

Same Dimension

The Same Dimension uses a secret algorithm to generate beautiful new colors.



E86795



FF5491



E87867



73676B



B30040



330012

Inverse Universe

The Inverse Universe completely reimagines the original color for something new.



E86795



FF5491



67D7E8



73676B



B30040



330012

Previews

White Background



This preview shows how the Hex color E86795 looks on a white background.

Color Contrast Check

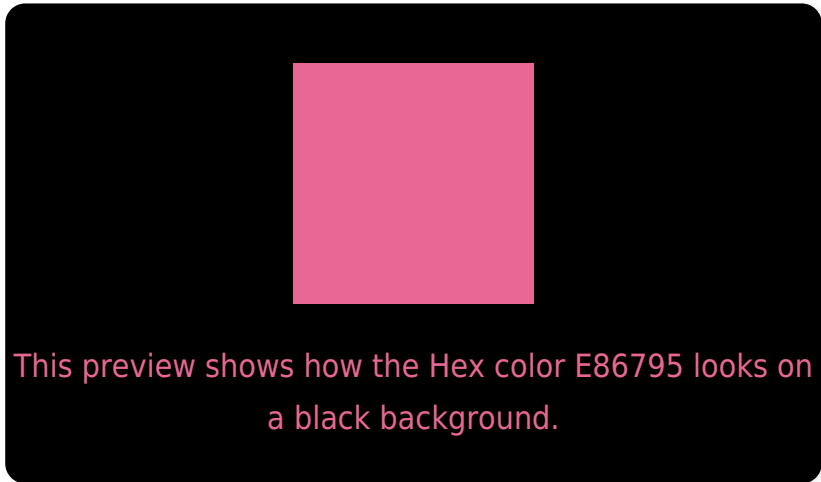
Large Text (above 18pt) WCAG AA ✓ Pass

Any Text WCAG AA × Fail

Large Text (above 18pt) WCAG AAA × Fail

Any Text WCAG AAA × Fail

Black Background



Color Contrast Check

Large Text (above 18pt) WCAG AA ✓ Pass

Any Text WCAG AA ✓ Pass

Large Text (above 18pt) WCAG AAA ✓ Pass

Any Text WCAG AAA × Fail

If you want to check with other color combinations, try the [Color Contrast Checker](#).

Hex E86795 Background



This preview shows how black text looks on a background with the Hex color E86795.



This preview shows how white text looks on a background with the Hex color E86795.

Color Blindness Simulation

Color vision deficiency is a very complex topic, and I could not describe the different causes any better than Wikipedia does, so if you want to learn more, you should check out their [article about color blindness](#).

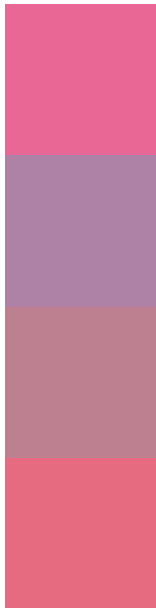
Dichromacy





Tritanopia
E56D75

Trichromacy



Original Color
E86795

Protanomaly
AE82A6

Deuteranomaly
BC8091

Tritanomaly
E66B81

Monochromacy



Original Color
E86795

Achromatopsia
939393

Achromatomaly
B28394

CSS Examples

Text

The CSS property to change the color of the text to Hex E86795 is called "color". The color property can be set on classes, ids or directly on the HTML element.

This example shows how text in the color #E86795 looks like.

```
.text, #text, p{  
  color:#E86795  
}
```

If you want to add a text shadow in that color use the text-shadow property, you can generate a text shadow directly with our [CSS Text Shadow Generator](#).

Here you see how black text with a 4 pixel #E86795 colored shadow looks like.

```
.shadow{ text-shadow: 4px 4px 2px #E86795
}
```

Border

The CSS property to change the border of an element to Hex E86795 is called "border". The border property can be set on classes, ids or directly on the HTML element.

This example shows the color as border, it can be applied via the CSS property "border" or "border-color".

```
.border, #border, table{ border:4px solid
#E86795 }
```

If only the border color should be changed use the property `border-color`.

```
.border{ border-color:#E86795 }
```

If you want to add a box shadow in that color use:

Here you see how a box with a 4 pixel #E86795 colored shadow looks like.

```
.boxshadow{ -moz-box-shadow:4px 4px 4px  
4px #E86795; -webkit-box-shadow:4px 4px  
4px 4px #E86795; box-shadow:4px 4px 4px  
4px #E86795 }
```

Background

The CSS property to change the background color of an element to Hex E86795 is called "background". The background property can be set on classes, ids or directly on the HTML element.

```
.background, #background, body{  
background:#E86795 }
```

If only the background color should be changed can be used:

```
.background{ background-color:#E86795 }
```

This example shows the color as background, it is applied via the CSS property "background".

To optimize and compress your CSS code, you can use our [online CSS compressor and optimizer](#) based on csstidy. If you want to create a linear or radial gradient as background or border, check our [CSS Gradient Generator](#).

Hey! You found this booklet interesting? Support Converting Colors with the new Membership Option!

The pro membership hides all ads, plus gives you double the colors in the color bucket, and more awesome pro features!

[Learn more, Memberships starting at \\$2.50/m!](#)

**Follow me
on Twitter!**

@ConvertingColor