

# Converting Colors

Hex(E86D8C)

Have a look what the booklet for  
Hex(E86D8C) contains.

<b>Hex(E86D8C)</b> .....	3
<b><i>Conversions</i></b> .....	4
<b><i>Details</i></b> .....	6
<b><i>Harmonies</i></b> .....	11
<b><i>Previews</i></b> .....	23
<b><i>Color Blindness Simulation</i></b> .....	26
<b><i>CSS Examples</i></b> .....	29

# **Color**

**Hex(E86D8C)**

# Conversions

## Conversions Part 1

Format	Color
Hex	E86D8C
RGB	232, 109, 140
RGB Percent	91%, 43%, 55%
CMY	0.0902, 0.5725, 0.4510
CMYK	0.00, 0.53, 0.40, 0.09
HSL	345°, 73%, 67%
HSV	345°, 53%, 91%
XYZ	43.4810, 29.9865, 28.3072
YIQ	149.3110, 63.3570, 35.7170

# Conversions

## Conversions Part 2

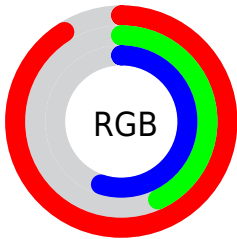
<b>Format</b>	<b>Color</b>
R <sub>Y</sub> B	232, 109, 140
Decimal	15232396
CIE Lab	61.64, 50.60, 6.22
CIE LCh	62, 50.977, 7.008
Yxy	29.9865, 0.4272, 0.2946
Android (android.graphics.Color)	4293422476 (0xFFE86D8C)
YUV	149.3110, -4.5903, 72.5183
Hunter-Lab	54.7600, 45.9042, 7.6830

# Details

The Hex color **E86D8C** is a light color, and the websafe version is hex **FF6699**. A complement of this color would be **6DE8C9**, and the grayscale version is **959595**.

A 20% lighter version of the original color is **FFA4C1**, and **AD375A** is the 20% darker color. If you saturate the color by 10%, you get **E8567B**, and if you desaturate by 10%, it is **E8849D**.

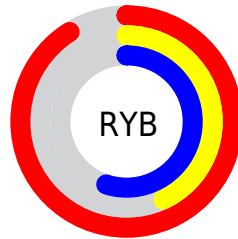
# Distribution



Red (91%)

Green (43%)

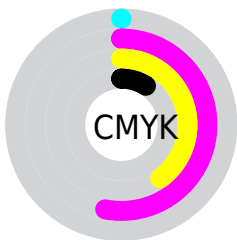
Blue (55%)



Red (91%)

Yellow (43%)

Blue (55%)

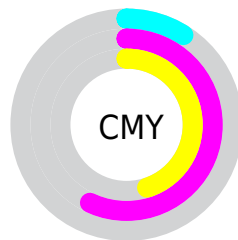


Cyan (0%)

Magenta (53%)

Yellow (40%)

Black (9%)



Cyan (9%)

Magenta (57%)

Yellow (45%)

# Brightness & Saturation Gradients

These gradients show how the Hex color E86D8C changes by changing the brightness by 10 percent. The first figure shows a shift by +10% for each color and the second figure -10%.

Similar to the brightness gradients but the following saturation gradients show a change of the Hex color E86D8C by changing the saturation by 10% instead.



 E86D8C

 E86D8C

FFFFFF

 CA5273

 FFA4C1

 AD375A

 FFC0DD

 901843

 FFDDFA

 73002D

 FFFAFF

 570019

 3D0002

 1C0001

 000000

 E86D8C

 E86D8C

 E8567B

 E8849D

 E83F69

 E89BAF

 E82758

 E8B3C0

 E81047

 E8CAD1

 E8003A

 E8E1E3

 E8F8F4

 E8FFFF

# Harmonies

## Analogous

The Analogous color harmony consists of three colors that are next to each other on the color wheel.



D474B9



E86D8C



E37561

# Triad

The Triadic color harmony groups three colors that are evenly spaced from another and form a triangle on the color wheel.



E86D8C



75A249



00A3E7

# Complementary

The Complementary color scheme is a pair of colors which are on the opposite of each other on the color wheel.



E86D8C



6DE8C9

# Split Complementary

Split-complementary colors differ from the complementary color scheme. The scheme consists of three colors, the original color and two neighbors of the complement color.



00AACA



E86D8C



2CA970

# Square

The Square scheme is like the rectangle color scheme, but the four colors are evenly spaced on the color wheel.



E86D8C



A49636



00AB9E



5496EE

# Rectangle

The Rectangle color scheme consists of four colors that form a rectangle on the color wheel.



E86D8C



D4804A



00AB9E



00A6E0



# Sweetspot

The Sweet Spot groups the original color and five complimentary colors.



E86D8C



FFD6E0



C76DE8



80676D



000000



808080



# Same Dimension

The Same Dimension uses a secret algorithm to generate beautiful new colors.



E86D8C



FF5C85



E88A6D



73676A



B3002D



33000D



# Inverse Universe

The Inverse Universe completely reimagines the original color for something new.



E86D8C



FF5C85



6DCBE8



73676A



B3002D



33000D



# Previews

## White Background



This preview shows how the Hex color E86D8C looks on a white background.

## Color Contrast Check

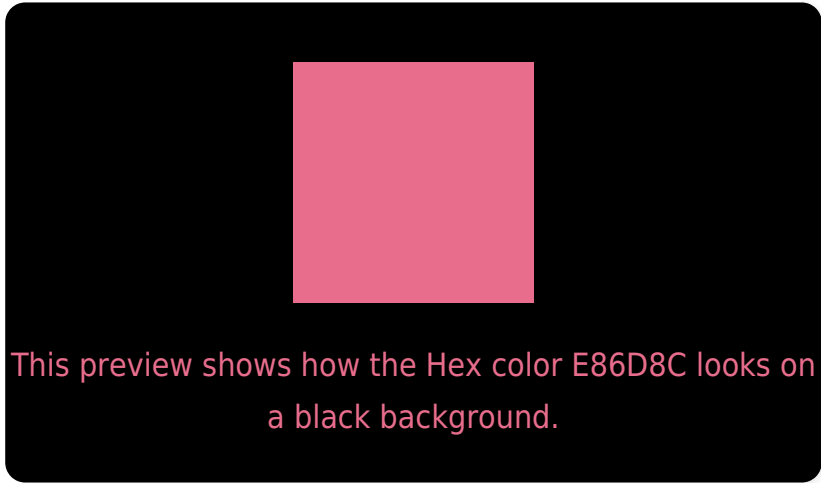
Large Text (above 18pt) WCAG AA ✓ Pass

Any Text WCAG AA × Fail

Large Text (above 18pt) WCAG AAA × Fail

Any Text WCAG AAA × Fail

# Black Background



## Color Contrast Check

Large Text (above 18pt) WCAG AA ✓ Pass

Any Text WCAG AA ✓ Pass

Large Text (above 18pt) WCAG AAA ✓ Pass

Any Text WCAG AAA ✓ Pass

If you want to check with other color combinations, try the [Color Contrast Checker](#).



## Hex E86D8C Background



This preview shows how black text looks on a background with the Hex color E86D8C.

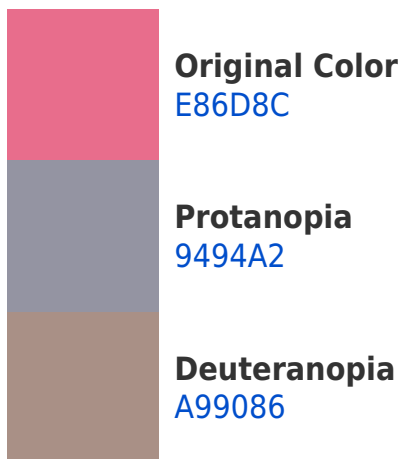


This preview shows how white text looks on a background with the Hex color E86D8C.

# Color Blindness Simulation

Color vision deficiency is a very complex topic, and I could not describe the different causes any better than Wikipedia does, so if you want to learn more, you should check out their [article about color blindness](#).

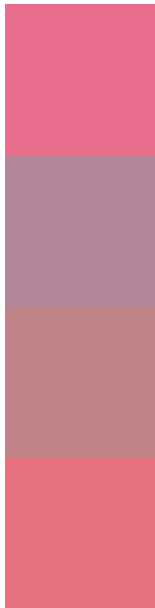
## Dichromacy





**Tritanopia**  
E67178

# Trichromacy



**Original Color**  
E86D8C

**Protanomaly**  
B3869A

**Deuteranomaly**  
C08388

**Tritanomaly**  
E7707F

# Monochromacy



**Original Color**  
E86D8C

**Achromatopsia**  
959595

**Achromatomaly**  
B38692

# CSS Examples

## Text

The CSS property to change the color of the text to Hex E86D8C is called "color". The color property can be set on classes, ids or directly on the HTML element.

This example shows how text in the color #E86D8C looks like.

```
.text, #text, p{  
    color:#E86D8C  
}
```

If you want to add a text shadow in that color use the text-shadow property, you can generate a text shadow directly with our [CSS Text Shadow Generator](#).

Here you see how black text with a 4 pixel #E86D8C colored shadow looks like.

```
.shadow{ text-shadow: 4px 4px 2px #E86D8C
}
```

## Border

The CSS property to change the border of an element to Hex E86D8C is called "border". The border property can be set on classes, ids or directly on the HTML element.

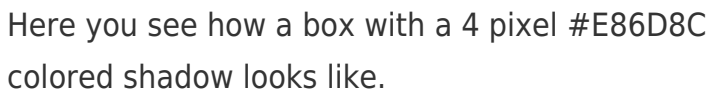
This example shows the color as border, it can be applied via the CSS property "border" or "border-color".

```
.border, #border, table{ border:4px solid
#E86D8C }
```

If only the border color should be changed use the property `border-color`.

```
.border{ border-color:#E86D8C }
```

If you want to add a box shadow in that color use:



Here you see how a box with a 4 pixel #E86D8C colored shadow looks like.

```
.boxshadow{ -moz-box-shadow:4px 4px 4px  
4px #E86D8C; -webkit-box-shadow:4px 4px  
4px 4px #E86D8C; box-shadow:4px 4px 4px  
4px #E86D8C }
```

# Background

The CSS property to change the background color of an element to Hex E86D8C is called "background". The background property can be set on classes, ids or directly on the HTML element.

```
.background, #background, body{  
background:#E86D8C }
```

If only the background color should be changed can be used:

```
.background{ background-color:#E86D8C }
```

This example shows the color as background, it is applied via the CSS property "background".

To optimize and compress your CSS code, you can use our [online CSS compressor and optimizer](#) based on csstidy. If you want to create a linear or radial gradient as background or border, check our [CSS Gradient Generator](#).



Hey! You found this booklet interesting? Support Converting Colors with the new Membership Option!

The pro membership hides all ads, plus gives you double the colors in the color bucket, and more awesome pro features!

**[Learn more, Memberships starting at \\$2.50/m!](#)**

**Follow me  
on Twitter!**

@ConvertingColor