

# Converting Colors

Hex(E87696)

Have a look what the booklet for  
Hex(E87696) contains.

<b>Hex(E87696)</b> .....	3
<i><b>Conversions</b></i> .....	4
<i><b>Details</b></i> .....	6
<i><b>Harmonies</b></i> .....	11
<i><b>Previews</b></i> .....	23
<i><b>Color Blindness Simulation</b></i> .....	26
<i><b>CSS Examples</b></i> .....	29

# **Color**

**Hex(E87696)**

# Conversions

## Conversions Part 1

Format	Color
Hex	E87696
RGB	232, 118, 150
RGB Percent	91%, 46%, 59%
CMY	0.0902, 0.5373, 0.4118
CMYK	0.00, 0.49, 0.35, 0.09
HSL	343°, 71%, 69%
HSV	343°, 49%, 91%
XYZ	45.2622, 32.3147, 32.7059
YIQ	155.7340, 57.6720, 34.1200

# Conversions

## Conversions Part 2

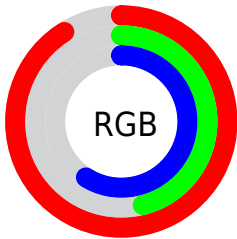
<b>Format</b>	<b>Color</b>
<b>R<sub>YB</sub></b>	232, 118, 150
Decimal	15234710
CIE <sub>Lab</sub>	63.60, 47.34, 3.30
CIE <sub>LCh</sub>	64, 47.456, 3.990
Yxy	32.3147, 0.4104, 0.2930
Android (android.graphics.Color)	4293424790 (0xFFE87696)
YUV	155.7340, -2.8269, 66.8853
Hunter-Lab	56.8460, 42.6455, 5.6801

# Details

The Hex color **E87696** is a light color, and the websafe version is hex **CC6699**. A complement of this color would be **76E8C8**, and the grayscale version is **9C9C9C**.

A 20% lighter version of the original color is **FFADCC**, and **AD4163** is the 20% darker color. If you saturate the color by 10%, you get **E85F85**, and if you desaturate by 10%, it is **E88DA7**.

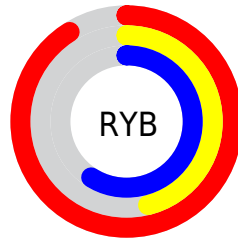
# Distribution



Red (91%)

Green (46%)

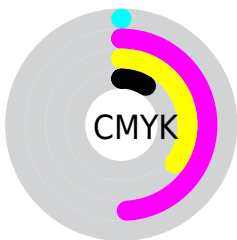
Blue (59%)



Red (91%)

Yellow (46%)

Blue (59%)

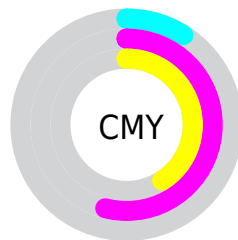


Cyan (0%)

Magenta (49%)

Yellow (35%)

Black (9%)



Cyan (9%)

Magenta (54%)

Yellow (41%)

# Brightness & Saturation Gradients

These gradients show how the Hex color E87696 changes by changing the brightness by 10 percent. The first figure shows a shift by +10% for each color and the second figure -10%.

Similar to the brightness gradients but the following saturation gradients show a change of the Hex color E87696 by changing the saturation by 10% instead.



 E87696

 E87696

FFFFFF

 CA5B7C

 FFADCC

 AD4163

 FFC9E8

 90254C

 FFE6FF

 740035

 590020

 3F0008

 220001

 000000

 E87696

 E87696

 E85F85

 E88DA7

 E84875

 E8A4B7

 E83064

 E8BCC8

 E81953

 E8D3D9

 E80243

 E8EAE9

 E80041

 E8FFFA

 E8FFFF

# Harmonies

## Analogous

The Analogous color harmony consists of three colors that are next to each other on the color wheel.



D37DC0



E87696



E67C6D

# Triad

The Triadic color harmony groups three colors that are evenly spaced from another and form a triangle on the color wheel.



E87696



82A551



00A8E5

# Complementary

The Complementary color scheme is a pair of colors which are on the opposite of each other on the color wheel.



E87696



76E8C8

# Split Complementary

Split-complementary colors differ from the complementary color scheme. The scheme consists of three colors, the original color and two neighbors of the complement color.



00AEC8



E87696



48AD73

# Square

The Square scheme is like the rectangle color scheme, but the four colors are evenly spaced on the color wheel.



E87696



AE9A42



00AF9F



599DEE

# Rectangle

The Rectangle color scheme consists of four colors that form a rectangle on the color wheel.



E87696



D98557



00AF9F



00ABDD



# Sweetspot

The Sweet Spot groups the original color and five complimentary colors.



E87696



FFD9E3



C876E8



80696F



000000



808080



# Same Dimension

The Same Dimension uses a secret algorithm to generate beautiful new colors.



E87696



FF6993



E88F76



73676A



B30032



33000E



# Inverse Universe

The Inverse Universe completely reimagines the original color for something new.



E87696



FF6993



76CFE8



73676A



B30032



33000E



# Previews

## White Background



This preview shows how the Hex color E87696 looks on a white background.

## Color Contrast Check

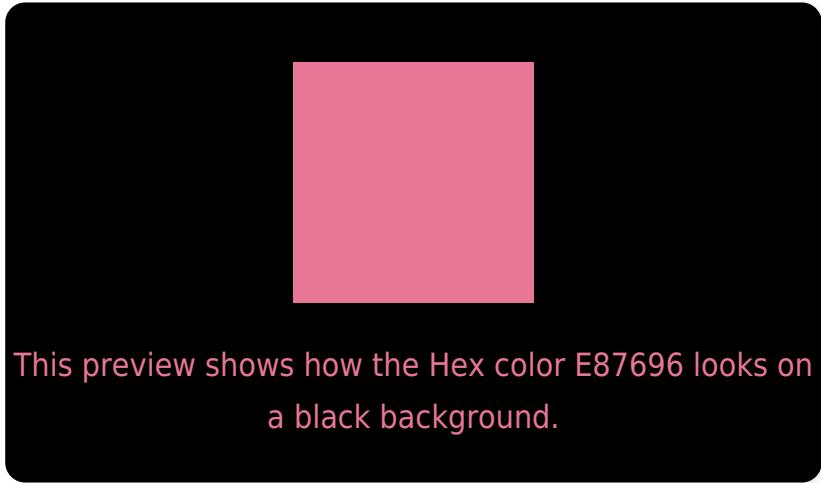
Large Text (above 18pt) WCAG AA × Fail

Any Text WCAG AA × Fail

Large Text (above 18pt) WCAG AAA × Fail

Any Text WCAG AAA × Fail

# Black Background



## Color Contrast Check

Large Text (above 18pt) WCAG AA ✓ Pass

Any Text WCAG AA ✓ Pass

Large Text (above 18pt) WCAG AAA ✓ Pass

Any Text WCAG AAA ✓ Pass

If you want to check with other color combinations, try the [Color Contrast Checker](#).



## Hex E87696 Background



This preview shows how black text looks on a background with the Hex color E87696.



This preview shows how white text looks on a background with the Hex color E87696.

# Color Blindness Simulation

Color vision deficiency is a very complex topic, and I could not describe the different causes any better than Wikipedia does, so if you want to learn more, you should check out their [article about color blindness](#).

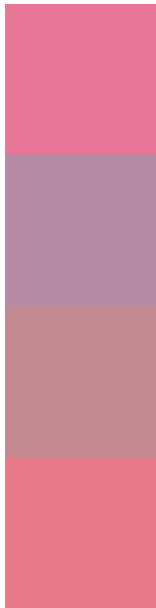
## Dichromacy





**Tritanopia**  
E67A82

# Trichromacy



**Original Color**  
E87696

**Protanomaly**  
B58CA3

**Deuteranomaly**  
C28A93

**Tritanomaly**  
E77989

# Monochromacy



**Original Color**  
E87696

**Achromatopsia**  
9C9C9C

**Achromatomaly**  
B88E9A

# CSS Examples

## Text

The CSS property to change the color of the text to Hex E87696 is called "color". The color property can be set on classes, ids or directly on the HTML element.

This example shows how text in the color #E87696 looks like.

```
.text, #text, p{  
    color:#E87696  
}
```

If you want to add a text shadow in that color use the text-shadow property, you can generate a text shadow directly with our [CSS Text Shadow Generator](#).

Here you see how black text with a 4 pixel #E87696 colored shadow looks like.

```
.shadow{ text-shadow: 4px 4px 2px #E87696
}
```

## Border

The CSS property to change the border of an element to Hex E87696 is called "border". The border property can be set on classes, ids or directly on the HTML element.

This example shows the color as border, it can be applied via the CSS property "border" or "border-color".

```
.border, #border, table{ border:4px solid
#E87696 }
```

If only the border color should be changed use the property `border-color`.

```
.border{ border-color:#E87696 }
```

If you want to add a box shadow in that color use:

Here you see how a box with a 4 pixel #E87696 colored shadow looks like.

```
.boxshadow{ -moz-box-shadow:4px 4px 4px  
4px #E87696; -webkit-box-shadow:4px 4px  
4px 4px #E87696; box-shadow:4px 4px 4px  
4px #E87696 }
```

# Background

The CSS property to change the background color of an element to Hex E87696 is called "background". The background property can be set on classes, ids or directly on the HTML element.

```
.background, #background, body{  
background:#E87696 }
```

If only the background color should be changed can be used:

```
.background{ background-color:#E87696 }
```

This example shows the color as background, it is applied via the CSS property "background".

To optimize and compress your CSS code, you can use our [online CSS compressor and optimizer](#) based on csstidy. If you want to create a linear or radial gradient as background or border, check our [CSS Gradient Generator](#).



Hey! You found this booklet interesting? Support Converting Colors with the new Membership Option!

The pro membership hides all ads, plus gives you double the colors in the color bucket, and more awesome pro features!

**[Learn more, Memberships starting at \\$2.50/m!](#)**

**Follow me  
on Twitter!**

@ConvertingColor