

Converting Colors

Hex(E88590)

Have a look what the booklet for
Hex(E88590) contains.

Hex(E88590)	3
<i>Conversions</i>	4
<i>Details</i>	6
<i>Harmonies</i>	11
<i>Previews</i>	23
<i>Color Blindness Simulation</i>	26
<i>CSS Examples</i>	29

Color

Hex(E88590)

Conversions

Conversions Part 1

Format	Color
Hex	E88590
RGB	232, 133, 144
RGB Percent	91%, 52%, 56%
CMY	0.0902, 0.4784, 0.4353
CMYK	0.00, 0.43, 0.38, 0.09
HSL	353°, 68%, 72%
HSV	353°, 43%, 91%
XYZ	46.7003, 35.9445, 30.8622
YIQ	163.8550, 55.4730, 24.4090

Conversions

Conversions Part 2

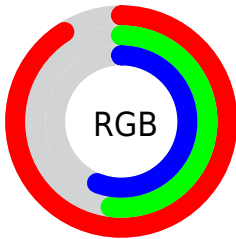
Format	Color
RYB	232, 133, 144
Decimal	15238544
CIELab	66.48, 39.04, 10.83
CIElCh	66, 40.512, 15.499
Yxy	35.9445, 0.4114, 0.3167
Android (android.graphics.Color)	4293428624 (0xFFE88590)
YUV	163.8550, -9.7885, 59.7632
Hunter-Lab	59.9537, 34.1216, 11.4471

Details

The Hex color **E88590** is a light color, and the websafe version is hex **FF9999**. A complement of this color would be **85E8DD**, and the grayscale version is **A4A4A4**.

A 20% lighter version of the original color is **FFBCC6**, and **AD515E** is the 20% darker color. If you saturate the color by 10%, you get **E86E7B**, and if you desaturate by 10%, it is **E89CA5**.

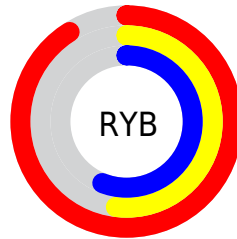
Distribution



Red (91%)

Green (52%)

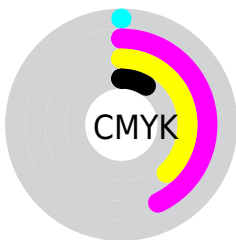
Blue (56%)



Red (91%)

Yellow (52%)

Blue (56%)

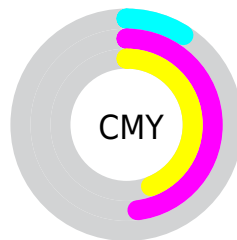


Cyan (0%)

Magenta (43%)

Yellow (38%)

Black (9%)



Cyan (9%)

Magenta (48%)

Yellow (44%)

Brightness & Saturation Gradients

These gradients show how the Hex color E88590 changes by changing the brightness by 10 percent. The first figure shows a shift by +10% for each color and the second figure -10%.

Similar to the brightness gradients but the following saturation gradients show a change of the Hex color E88590 by changing the saturation by 10% instead.

 E88590

 E88590

FFFFFF

 CA6B76

 FFBC6

 AD515E

 FFD8E2

 913846

 FFF5FE

 751E30

 5A001B

 400000

 250001

 000000

 E88590

 E88590

 E86E7B

 E89CA5

 E85767

 E8B3B9

 E83F52

 E8CBCE

 E8283E

 E8E2E2

 E81129

 E8F9F7

 E8001A

 E8FFFF

Harmonies

Analogous

The Analogous color harmony consists of three colors that are next to each other on the color wheel.



DD87B5



E88590



E08D6F

Triad

The Triadic color harmony groups three colors that are evenly spaced from another and form a triangle on the color wheel.



E88590



7DAE6D



44AAE8

Complementary

The Complementary color scheme is a pair of colors which are on the opposite of each other on the color wheel.



E88590



85E8DD

Split Complementary

Split-complementary colors differ from the complementary color scheme. The scheme consists of three colors, the original color and two neighbors of the complement color.



00B2D5



E88590



4BB48E

Square

The Square scheme is like the rectangle color scheme, but the four colors are evenly spaced on the color wheel.



E88590



A6A55A



00B5B4



8A9FE8

Rectangle

The Rectangle color scheme consists of four colors that form a rectangle on the color wheel.



E88590



D19560



00B5B4



21ADE3

Sweetspot

The Sweet Spot groups the original color and five complimentary colors.



E88590



FFDEE2



DC85E8



806B6D



000000



808080

Same Dimension

The Same Dimension uses a secret algorithm to generate beautiful new colors.



E88590



FF7D8B



E8AB85



736769



B30014



330006

Inverse Universe

The Inverse Universe completely reimagines the original color for something new.



E88590



FF7D8B



85C2E8



736769



B30014



330006

Previews

White Background



This preview shows how the Hex color E88590 looks on a white background.

Color Contrast Check

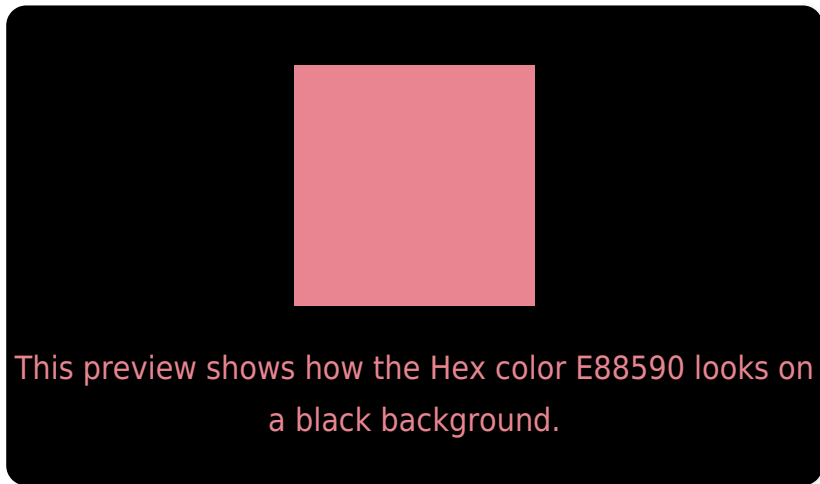
Large Text (above 18pt) WCAG AA × Fail

Any Text WCAG AA × Fail

Large Text (above 18pt) WCAG AAA × Fail

Any Text WCAG AAA × Fail

Black Background



Color Contrast Check

Large Text (above 18pt) WCAG AA ✓ Pass

Any Text WCAG AA ✓ Pass

Large Text (above 18pt) WCAG AAA ✓ Pass

Any Text WCAG AAA ✓ Pass

If you want to check with other color combinations, try the [Color Contrast Checker](#).

Hex E88590 Background



This preview shows how black text looks on a background with the Hex color E88590.

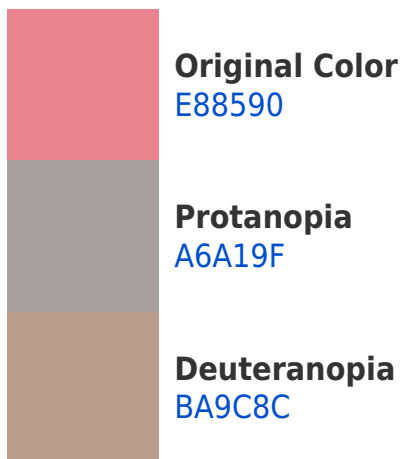



This preview shows how white text looks on a background with the Hex color E88590.

Color Blindness Simulation

Color vision deficiency is a very complex topic, and I could not describe the different causes any better than Wikipedia does, so if you want to learn more, you should check out their [article about color blindness](#).

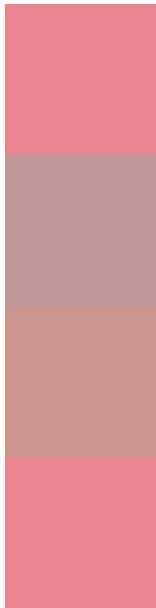
Dichromacy





Tritanopia
E8858F

Trichromacy



Original Color
E88590

Protanomaly
BE979A

Deuteranomaly
CB948D

Tritanomaly
E8858F

Monochromacy



Original Color
E88590

Achromatopsia
A4A4A4

Achromatomaly
BD999D

CSS Examples

Text

The CSS property to change the color of the text to Hex E88590 is called "color". The color property can be set on classes, ids or directly on the HTML element.

This example shows how text in the color #E88590 looks like.

```
.text, #text, p{  
    color:#E88590  
}
```

If you want to add a text shadow in that color use the text-shadow property, you can generate a text shadow directly with our [CSS Text Shadow Generator](#).

Here you see how black text with a 4 pixel #E88590 colored shadow looks like.

```
.shadow{ text-shadow: 4px 4px 2px #E88590
}
```

Border

The CSS property to change the border of an element to Hex E88590 is called "border". The border property can be set on classes, ids or directly on the HTML element.

This example shows the color as border, it can be applied via the CSS property "border" or "border-color".

```
.border, #border, table{ border:4px solid
#E88590 }
```

If only the border color should be changed use the property `border-color`.

```
.border{ border-color:#E88590 }
```

If you want to add a box shadow in that color use:

Here you see how a box with a 4 pixel #E88590 colored shadow looks like.

```
.boxshadow{ -moz-box-shadow:4px 4px 4px  
4px #E88590; -webkit-box-shadow:4px 4px  
4px 4px #E88590; box-shadow:4px 4px 4px  
4px #E88590 }
```

Background

The CSS property to change the background color of an element to Hex E88590 is called "background". The background property can be set on classes, ids or directly on the HTML element.

```
.background, #background, body{  
background:#E88590 }
```

If only the background color should be changed can be used:

```
.background{ background-color:#E88590 }
```

This example shows the color as background, it is applied via the CSS property "background".

To optimize and compress your CSS code, you can use our [online CSS compressor and optimizer](#) based on csstidy. If you want to create a linear or radial gradient as background or border, check our [CSS Gradient Generator](#).

Hey! You found this booklet interesting? Support Converting Colors with the new Membership Option!

The pro membership hides all ads, plus gives you double the colors in the color bucket, and more awesome pro features!

[Learn more, Memberships starting at \\$2.50/m!](#)

**Follow me
on Twitter!**

@ConvertingColor