

Converting Colors

Hex(E897A2)

Have a look what the booklet for
Hex(E897A2) contains.

Hex(E897A2)	3
<i>Conversions</i>	4
<i>Details</i>	6
<i>Harmonies</i>	11
<i>Previews</i>	23
<i>Color Blindness Simulation</i>	26
<i>CSS Examples</i>	29

Color

Hex(E897A2)

Conversions

Conversions Part 1

Format	Color
Hex	E897A2
RGB	232, 151, 162
RGB Percent	91%, 59%, 64%
CMY	0.0902, 0.4078, 0.3647
CMYK	0.00, 0.35, 0.30, 0.09
HSL	352°, 64%, 75%
HSV	352°, 35%, 91%
XYZ	50.8669, 41.8977, 39.5885
YIQ	176.4730, 44.7450, 20.5930

Conversions

Conversions Part 2

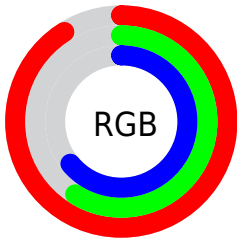
Format	Color
RYB	232, 151, 162
Decimal	15243170
CIELab	70.80, 31.81, 6.91
CIElCh	71, 32.549, 12.255
Yxy	41.8977, 0.3843, 0.3166
Android (android.graphics.Color)	4293433250 (0xFFE897A2)
YUV	176.4730, -7.1352, 48.6972
Hunter-Lab	64.7284, 26.9998, 9.0476

Details

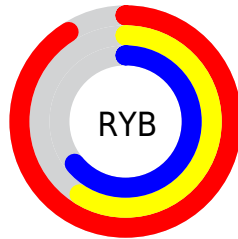
The Hex color **E897A2** is a light color, and the websafe version is hex **FF9999**. A complement of this color would be **97E8DD**, and the grayscale version is **B1B1B1**.

A 20% lighter version of the original color is **FFCED9**, and **AE636F** is the 20% darker color. If you saturate the color by 10%, you get **E8808E**, and if you desaturate by 10%, it is **E8AEB6**.

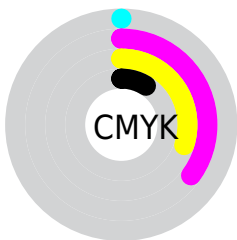
Distribution



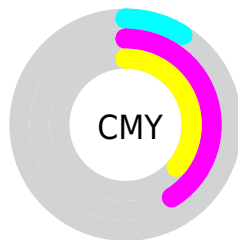
- Red (91%)
- Green (59%)
- Blue (64%)



- Red (91%)
- Yellow (59%)
- Blue (64%)



- Cyan (0%)
- Magenta (35%)
- Yellow (30%)
- Black (9%)



- Cyan (9%)
- Magenta (41%)
- Yellow (36%)

Brightness & Saturation Gradients

These gradients show how the Hex color E897A2 changes by changing the brightness by 10 percent. The first figure shows a shift by +10% for each color and the second figure -10%.

Similar to the brightness gradients but the following saturation gradients show a change of the Hex color E897A2 by changing the saturation by 10% instead.

 E897A2

 E897A2

FFFFFF

 CB7D88

 FFCED9

 AE636F

 FFEAF5

 934A56

 77323F

 5D1A29

 430015

 2D0001

 000000

 E897A2

 E897A2

 E8808E

 E8AEB6

 E8697A

 E8C5CA

 E85166

 E8DDDE

 E83A52

 E8F4F2

 E8233E

 E8FFFF

 E80C2A

 E80020

Harmonies

Analogous

The Analogous color harmony consists of three colors that are next to each other on the color wheel.



DC99C0



E897A2



E39C87

Triad

The Triadic color harmony groups three colors that are evenly spaced from another and form a triangle on the color wheel.



E897A2



95B781



6BB5E5

Complementary

The Complementary color scheme is a pair of colors which are on the opposite of each other on the color wheel.



E897A2



97E8DD

Split Complementary

Split-complementary colors differ from the complementary color scheme. The scheme consists of three colors, the original color and two neighbors of the complement color.



4BBBD4



E897A2



71BC9A

Square

The Square scheme is like the rectangle color scheme, but the four colors are evenly spaced on the color wheel.



E897A2



B6AF73



52BEB9



98ACE7

Rectangle

The Rectangle color scheme consists of four colors that form a rectangle on the color wheel.



E897A2



D8A27A



52BEB9



5DB8E1

Sweetspot

The Sweet Spot groups the original color and five complimentary colors.



E897A2



FFE6E9



DC97E8



807072



000000



808080

Same Dimension

The Same Dimension uses a secret algorithm to generate beautiful new colors.



E897A2



FF94A2



E8B397



736769



B30018



330007

Inverse Universe

The Inverse Universe completely reimagines the original color for something new.



E897A2



FF94A2



97CCE8



736769



B30018



330007

Previews

White Background



This preview shows how the Hex color E897A2 looks on a white background.

Color Contrast Check

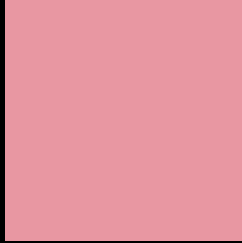
Large Text (above 18pt) WCAG AA × Fail

Any Text WCAG AA × Fail

Large Text (above 18pt) WCAG AAA × Fail

Any Text WCAG AAA × Fail

Black Background



This preview shows how the Hex color E897A2 looks on a black background.

Color Contrast Check

Large Text (above 18pt) WCAG AA ✓ Pass

Any Text WCAG AA ✓ Pass

Large Text (above 18pt) WCAG AAA ✓ Pass

Any Text WCAG AAA ✓ Pass

If you want to check with other color combinations, try the [Color Contrast Checker](#).

Hex E897A2 Background



This preview shows how black text looks on a background with the Hex color E897A2.

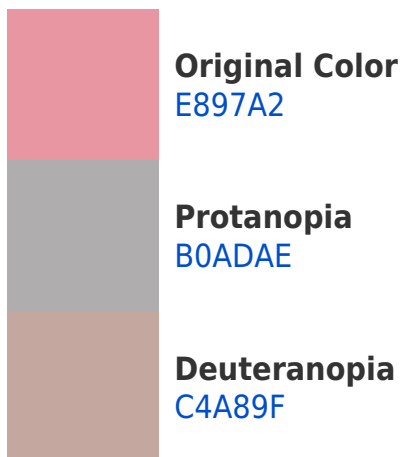


This preview shows how white text looks on a background with the Hex color E897A2.

Color Blindness Simulation

Color vision deficiency is a very complex topic, and I could not describe the different causes any better than Wikipedia does, so if you want to learn more, you should check out their [article about color blindness](#).

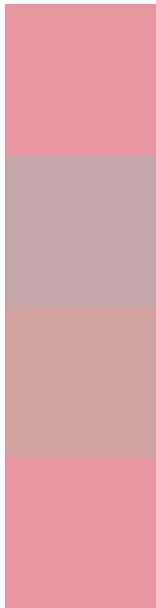
Dichromacy





Tritanopia
E897A2

Trichromacy



Original Color
E897A2

Protanomaly
C4A5AA

Deuteranomaly
D1A2A0

Tritanomaly
E897A2

Monochromacy



Original Color
E897A2

Achromatopsia
B0B0B0

Achromatomaly
C4A7AB

CSS Examples

Text

The CSS property to change the color of the text to Hex E897A2 is called "color". The color property can be set on classes, ids or directly on the HTML element.

This example shows how text in the color #E897A2 looks like.

```
.text, #text, p{  
    color:#E897A2  
}
```

If you want to add a text shadow in that color use the text-shadow property, you can generate a text shadow directly with our [CSS Text Shadow Generator](#).

Here you see how black text with a 4 pixel #E897A2 colored shadow looks like.

```
.shadow{ text-shadow: 4px 4px 2px #E897A2
}
```

Border

The CSS property to change the border of an element to Hex E897A2 is called "border". The border property can be set on classes, ids or directly on the HTML element.

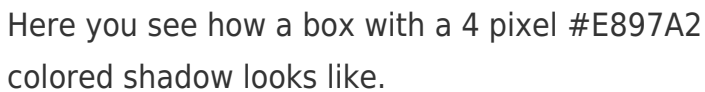
This example shows the color as border, it can be applied via the CSS property "border" or "border-color".

```
.border, #border, table{ border:4px solid
#E897A2 }
```

If only the border color should be changed use the property `border-color`.

```
.border{ border-color:#E897A2 }
```

If you want to add a box shadow in that color use:



Here you see how a box with a 4 pixel #E897A2 colored shadow looks like.

```
.boxshadow{ -moz-box-shadow:4px 4px 4px  
4px #E897A2; -webkit-box-shadow:4px 4px  
4px 4px #E897A2; box-shadow:4px 4px 4px  
4px #E897A2 }
```

Background

The CSS property to change the background color of an element to Hex E897A2 is called "background". The background property can be set on classes, ids or directly on the HTML element.

```
.background, #background, body{  
background:#E897A2 }
```

If only the background color should be changed can be used:

```
.background{ background-color:#E897A2 }
```

This example shows the color as background, it is applied via the CSS property "background".

To optimize and compress your CSS code, you can use our [online CSS compressor and optimizer](#) based on csstidy. If you want to create a linear or radial gradient as background or border, check our [CSS Gradient Generator](#).

Hey! You found this booklet interesting? Support Converting Colors with the new Membership Option!

The pro membership hides all ads, plus gives you double the colors in the color bucket, and more awesome pro features!

[Learn more, Memberships starting at \\$2.50/m!](#)

**Follow me
on Twitter!**

@ConvertingColor