

Converting Colors

Hex(E8A2AC)

Have a look what the booklet for
Hex(E8A2AC) contains.

Hex(E8A2AC)	3
<i>Conversions</i>	4
<i>Details</i>	6
<i>Harmonies</i>	11
<i>Previews</i>	23
<i>Color Blindness Simulation</i>	26
<i>CSS Examples</i>	29

Color

Hex(E8A2AC)

Conversions

Conversions Part 1

Format	Color
Hex	E8A2AC
RGB	232, 162, 172
RGB Percent	91%, 64%, 67%
CMY	0.0902, 0.3647, 0.3255
CMYK	0.00, 0.30, 0.26, 0.09
HSL	351°, 60%, 77%
HSV	351°, 30%, 91%
XYZ	53.6454, 45.9750, 45.0764
YIQ	184.0700, 38.5100, 17.9500

Conversions

Conversions Part 2

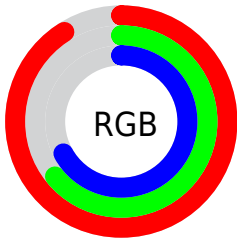
Format	Color
R _{YB}	232, 162, 172
Decimal	15245996
CIE Lab	73.53, 27.31, 5.30
CIE LCh	74, 27.815, 10.988
Yxy	45.9750, 0.3707, 0.3177
Android (android.graphics.Color)	4293436076 (0xFFE8A2AC)
YUV	184.0700, -5.9505, 42.0346
Hunter-Lab	67.8049, 22.5659, 8.0477

Details

The Hex color **E8A2AC** is a light color, and the websafe version is hex **CC9999**. A complement of this color would be **A2E8DE**, and the grayscale version is **B8B8B8**.

A 20% lighter version of the original color is **FFD9E3**, and **AF6E78** is the 20% darker color. If you saturate the color by 10%, you get **E88B98**, and if you desaturate by 10%, it is **E8B9C0**.

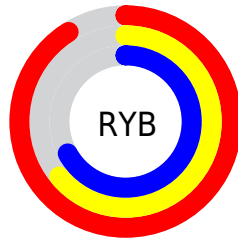
Distribution



Red (91%)

Green (64%)

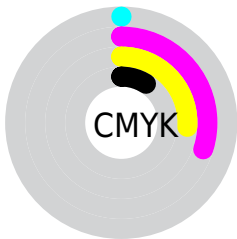
Blue (67%)



Red (91%)

Yellow (64%)

Blue (67%)

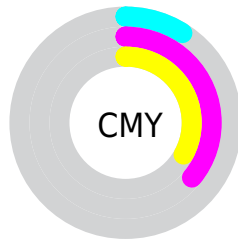


Cyan (0%)

Magenta (30%)

Yellow (26%)

Black (9%)



Cyan (9%)

Magenta (36%)

Yellow (33%)

Brightness & Saturation Gradients

These gradients show how the Hex color E8A2AC changes by changing the brightness by 10 percent. The first figure shows a shift by +10% for each color and the second figure -10%.

Similar to the brightness gradients but the following saturation gradients show a change of the Hex color E8A2AC by changing the saturation by 10% instead.

 E8A2AC

 E8A2AC

FFFFFF

 CB8791

 FFD9E3

 AF6E78

 FFF6FF

 93555F

 783D48

 5E2531

 450E1C

 2E0001

 000000

 E8A2AC

 E8A2AC

 E88B98

 E8B9C0

 E87484

 E8D0D4

 E85C70

 E8E8E8

 E8455C

 E8FFFC

 E82E49

 E8FFFF

 E81735

 E80021

Harmonies

Analogous

The Analogous color harmony consists of three colors that are next to each other on the color wheel.



DDA4C6



E8A2AC



E5A694

Triad

The Triadic color harmony groups three colors that are evenly spaced from another and form a triangle on the color wheel.



E8A2AC



A1BD8E



7FBCE4

Complementary

The Complementary color scheme is a pair of colors which are on the opposite of each other on the color wheel.



E8A2AC



A2E8DE

Split Complementary

Split-complementary colors differ from the complementary color scheme. The scheme consists of three colors, the original color and two neighbors of the complement color.



69C1D5



E8A2AC



84C2A3

Square

The Square scheme is like the rectangle color scheme, but the four colors are evenly spaced on the color wheel.



E8A2AC



BEB682



6DC3BD



A2B4E6

Rectangle

The Rectangle color scheme consists of four colors that form a rectangle on the color wheel.



E8A2AC



DCAB89



6DC3BD



75BEE0

Sweetspot

The Sweet Spot groups the original color and five complimentary colors.



E8A2AC



FFE8EB



DDA2E8



807173



000000



808080

Same Dimension

The Same Dimension uses a secret algorithm to generate beautiful new colors.



E8A2AC



FFA3B0



E8BBA2



736769



B3001A



330007

Inverse Universe

The Inverse Universe completely reimagines the original color for something new.



E8A2AC



FFA3B0



A2D0E8



736769



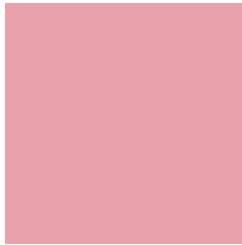
B3001A



330007

Previews

White Background



This preview shows how the Hex color E8A2AC looks on a white background.

Color Contrast Check

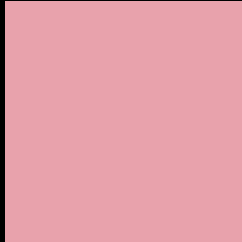
Large Text (above 18pt) WCAG AA × Fail

Any Text WCAG AA × Fail

Large Text (above 18pt) WCAG AAA × Fail

Any Text WCAG AAA × Fail

Black Background



This preview shows how the Hex color E8A2AC looks on a black background.

Color Contrast Check

Large Text (above 18pt) WCAG AA ✓ Pass

Any Text WCAG AA ✓ Pass

Large Text (above 18pt) WCAG AAA ✓ Pass

Any Text WCAG AAA ✓ Pass

If you want to check with other color combinations, try the [Color Contrast Checker](#).

Hex E8A2AC Background



This preview shows how black text looks on a background with the Hex color E8A2AC.

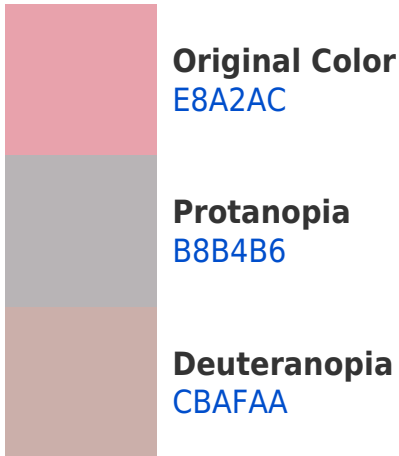


This preview shows how white text looks on a background with the Hex color E8A2AC.

Color Blindness Simulation

Color vision deficiency is a very complex topic, and I could not describe the different causes any better than Wikipedia does, so if you want to learn more, you should check out their [article about color blindness](#).

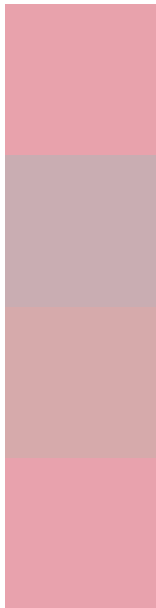
Dichromacy





Tritanopia
E8A2AE

Trichromacy



Original Color
E8A2AC

Protanomaly
C9ADB2

Deuteranomaly
D6AAAB

Tritanomaly
E8A2AD

Monochromacy



Original Color
E8A2AC

Achromatopsia
B8B8B8

Achromatomaly
C9B0B4

CSS Examples

Text

The CSS property to change the color of the text to Hex E8A2AC is called "color". The color property can be set on classes, ids or directly on the HTML element.

This example shows how text in the color #E8A2AC looks like.

```
.text, #text, p{  
    color:#E8A2AC  
}
```

If you want to add a text shadow in that color use the text-shadow property, you can generate a text shadow directly with our [CSS Text Shadow Generator](#).

Here you see how black text with a 4 pixel #E8A2AC colored shadow looks like.

```
.shadow{ text-shadow: 4px 4px 2px #E8A2AC }  
}
```

Border

The CSS property to change the border of an element to Hex E8A2AC is called "border". The border property can be set on classes, ids or directly on the HTML element.

This example shows the color as border, it can be applied via the CSS property "border" or "border-color".

```
.border, #border, table{ border:4px solid #E8A2AC }  
}
```

If only the border color should be changed use the property `border-color`.

```
.border{ border-color:#E8A2AC }
```

If you want to add a box shadow in that color use:

Here you see how a box with a 4 pixel #E8A2AC colored shadow looks like.

```
.boxshadow{ -moz-box-shadow:4px 4px 4px  
4px #E8A2AC; -webkit-box-shadow:4px 4px  
4px 4px #E8A2AC; box-shadow:4px 4px 4px  
4px #E8A2AC }
```

Background

The CSS property to change the background color of an element to Hex E8A2AC is called "background". The background property can be set on classes, ids or directly on the HTML element.

```
.background, #background, body{  
background:#E8A2AC }
```

If only the background color should be changed can be used:

```
.background{ background-color:#E8A2AC }
```

This example shows the color as background, it is applied via the CSS property "background".

To optimize and compress your CSS code, you can use our [online CSS compressor and optimizer](#) based on csstidy. If you want to create a linear or radial gradient as background or border, check our [CSS Gradient Generator](#).

Hey! You found this booklet interesting? Support Converting Colors with the new Membership Option!

The pro membership hides all ads, plus gives you double the colors in the color bucket, and more awesome pro features!

[Learn more, Memberships starting at \\$2.50/m!](#)

**Follow me
on Twitter!**

@ConvertingColor