

Converting Colors

Hex(E8B8A2)

Have a look what the booklet for
Hex(E8B8A2) contains.

Hex(E8B8A2)	3
<i>Conversions</i>	4
<i>Details</i>	6
<i>Harmonies</i>	11
<i>Previews</i>	23
<i>Color Blindness Simulation</i>	26
<i>CSS Examples</i>	29

Color

Hex(E8B8A2)

Conversions

Conversions Part 1

Format	Color
Hex	E8B8A2
RGB	232, 184, 162
RGB Percent	91%, 72%, 64%
CMY	0.0902, 0.2784, 0.3647
CMYK	0.00, 0.21, 0.30, 0.09
HSL	19°, 60%, 77%
HSV	19°, 30%, 91%
XYZ	56.9408, 54.0454, 41.6131
YIQ	195.8440, 35.6700, 3.3340

Conversions

Conversions Part 2

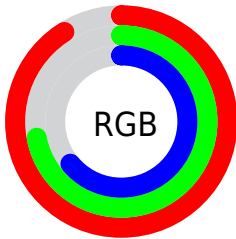
Format	Color
R _Y B	232, 194, 162
Decimal	15251618
CIE Lab	78.49, 14.22, 17.77
CIE LCh	78, 22.762, 51.326
Yxy	54.0454, 0.3731, 0.3542
Android (android.graphics.Color)	4293441698 (0xFFE8B8A2)
YUV	195.8440, -16.6851, 31.7088
Hunter-Lab	73.5156, 9.6032, 17.9001

Details

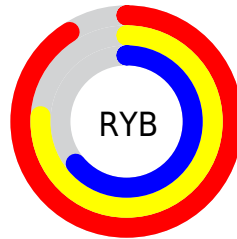
The Hex color **E8B8A2** is a light color, and the websafe version is hex **FFCCCC**. A complement of this color would be **A2D2E8**, and the grayscale version is **C4C4C4**.

A 20% lighter version of the original color is **FFF0D9**, and **AF836E** is the 20% darker color. If you saturate the color by 10%, you get **E8A88B**, and if you desaturate by 10%, it is **E8C8B9**.

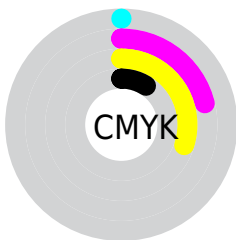
Distribution



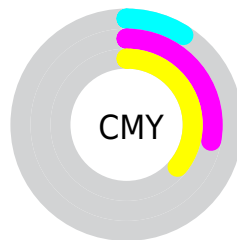
- Red (91%)
- Green (72%)
- Blue (64%)



- Red (91%)
- Yellow (76%)
- Blue (64%)



- Cyan (0%)
- Magenta (21%)
- Yellow (30%)
- Black (9%)



- Cyan (9%)
- Magenta (28%)
- Yellow (36%)

Brightness & Saturation Gradients

These gradients show how the Hex color E8B8A2 changes by changing the brightness by 10 percent. The first figure shows a shift by +10% for each color and the second figure -10%.

Similar to the brightness gradients but the following saturation gradients show a change of the Hex color E8B8A2 by changing the saturation by 10% instead.

 E8B8A2

 E8B8A2

FFFFFF

 CB9D88

 FFF0D9

 AF836E

 FFFFF5

 946A56

 79513F

 5F3A28

 462414

 2F1000

 120000

 000000

 E8B8A2

 E8B8A2

 E8A88B

 E8C8B9

 E89874

 E8D8D0

 E8885C

 E8E8E8

 E87845

 E8F8FF

 E8682E

 E8FFFF

 E85917

 E84900

Harmonies

Analogous

The Analogous color harmony consists of three colors that are next to each other on the color wheel.



EEB4B4



E8B8A2



D8BF99

Triad

The Triadic color harmony groups three colors that are evenly spaced from another and form a triangle on the color wheel.



E8B8A2



94CEBB



BEBFE9

Complementary

The Complementary color scheme is a pair of colors which are on the opposite of each other on the color wheel.



E8B8A2



A2D2E8

Split Complementary

Split-complementary colors differ from the complementary color scheme. The scheme consists of three colors, the original color and two neighbors of the complement color.



A2C6EB



E8B8A2



88CED1

Square

The Square scheme is like the rectangle color scheme, but the four colors are evenly spaced on the color wheel.



E8B8A2



AACBA7



8DCBE2



D8B8DD

Rectangle

The Rectangle color scheme consists of four colors that form a rectangle on the color wheel.



E8B8A2



CAC399



8DCBE2



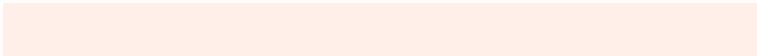
B4C1EB

Sweetspot

The Sweet Spot groups the original color and five complimentary colors.



E8B8A2



FFEFE8



E8A2D3



807671



000000



808080

Same Dimension

The Same Dimension uses a secret algorithm to generate beautiful new colors.



E8B8A2



FFC0A3



E8DAA2



736B67



B33800



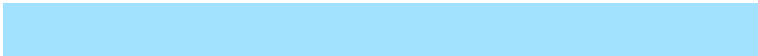
331000

Inverse Universe

The Inverse Universe completely reimagines the original color for something new.



A2D2E8



A3E2FF



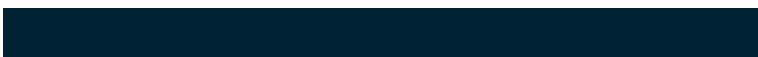
A2B0E8



676F73



007AB3



002333

Previews

White Background



This preview shows how the Hex color E8B8A2 looks on a white background.

Color Contrast Check

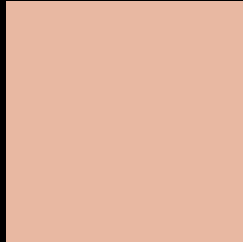
Large Text (above 18pt) WCAG AA × Fail

Any Text WCAG AA × Fail

Large Text (above 18pt) WCAG AAA × Fail

Any Text WCAG AAA × Fail

Black Background



This preview shows how the Hex color E8B8A2 looks on a black background.

Color Contrast Check

Large Text (above 18pt) WCAG AA ✓ Pass

Any Text WCAG AA ✓ Pass

Large Text (above 18pt) WCAG AAA ✓ Pass

Any Text WCAG AAA ✓ Pass

If you want to check with other color combinations, try the [Color Contrast Checker](#).

Hex E8B8A2 Background



This preview shows how black text looks on a background with the Hex color E8B8A2.



This preview shows how white text looks on a background with the Hex color E8B8A2.

Color Blindness Simulation

Color vision deficiency is a very complex topic, and I could not describe the different causes any better than Wikipedia does, so if you want to learn more, you should check out their [article about color blindness](#).

Dichromacy



Original Color
E8B8A2

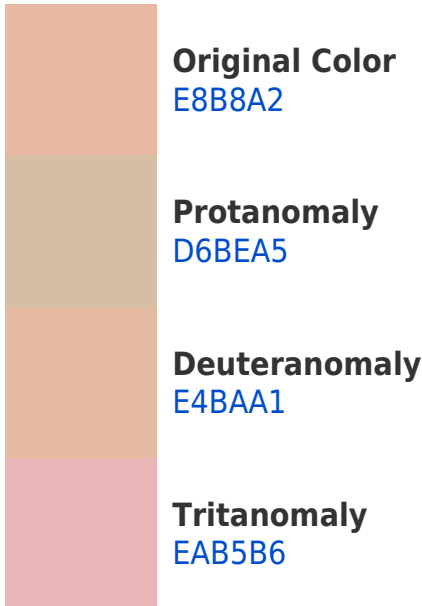
Protanopia
CCC2A7

Deuteranopia
E1BBA1

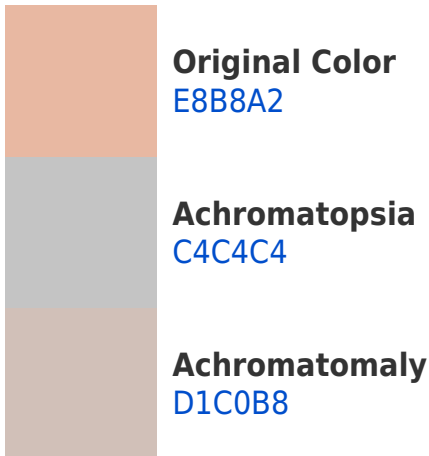


Tritanopia
EBB3C1

Trichromacy



Monochromacy



CSS Examples

Text

The CSS property to change the color of the text to Hex E8B8A2 is called "color". The color property can be set on classes, ids or directly on the HTML element.

This example shows how text in the color #E8B8A2 looks like.

```
.text, #text, p{  
    color:#E8B8A2  
}
```

If you want to add a text shadow in that color use the text-shadow property, you can generate a text shadow directly with our [CSS Text Shadow Generator](#).

Here you see how black text with a 4 pixel #E8B8A2 colored shadow looks like.

```
.shadow{ text-shadow: 4px 4px 2px #E8B8A2
}
```

Border

The CSS property to change the border of an element to Hex E8B8A2 is called "border". The border property can be set on classes, ids or directly on the HTML element.

This example shows the color as border, it can be applied via the CSS property "border" or "border-color".

```
.border, #border, table{ border:4px solid
#E8B8A2 }
```

If only the border color should be changed use the property `border-color`.

```
.border{ border-color:#E8B8A2 }
```

If you want to add a box shadow in that color use:

Here you see how a box with a 4 pixel #E8B8A2 colored shadow looks like.

```
.boxshadow{ -moz-box-shadow:4px 4px 4px  
4px #E8B8A2; -webkit-box-shadow:4px 4px  
4px 4px #E8B8A2; box-shadow:4px 4px 4px  
4px #E8B8A2 }
```

Background

The CSS property to change the background color of an element to Hex E8B8A2 is called "background". The background property can be set on classes, ids or directly on the HTML element.

```
.background, #background, body{  
background:#E8B8A2 }
```

If only the background color should be changed can be used:

```
.background{ background-color:#E8B8A2 }
```

This example shows the color as background, it is applied via the CSS property "background".

To optimize and compress your CSS code, you can use our [online CSS compressor and optimizer](#) based on csstidy. If you want to create a linear or radial gradient as background or border, check our [CSS Gradient Generator](#).

Hey! You found this booklet interesting? Support Converting Colors with the new Membership Option!

The pro membership hides all ads, plus gives you double the colors in the color bucket, and more awesome pro features!

[Learn more, Memberships starting at \\$2.50/m!](#)

**Follow me
on Twitter!**

@ConvertingColor