

# Converting Colors

Hex(E8BFAD)

Have a look what the booklet for  
Hex(E8BFAD) contains.

<b>Hex(E8BFAD)</b> .....	3
<i><b>Conversions</b></i> .....	4
<i><b>Details</b></i> .....	6
<i><b>Harmonies</b></i> .....	11
<i><b>Previews</b></i> .....	23
<i><b>Color Blindness Simulation</b></i> .....	26
<i><b>CSS Examples</b></i> .....	29

# **Color**

**Hex(E8BFAD)**

# Conversions

## Conversions Part 1

Format	Color
Hex	E8BFAD
RGB	232, 191, 173
RGB Percent	91%, 75%, 68%
CMY	0.0902, 0.2510, 0.3216
CMYK	0.00, 0.18, 0.25, 0.09
HSL	18°, 56%, 79%
HSV	18°, 25%, 91%
XYZ	59.4523, 57.4345, 47.4877
YIQ	201.2070, 30.2140, 3.0940

# Conversions

## Conversions Part 2

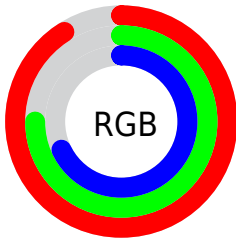
Format	Color
R <sub>Y</sub> B	232, 199, 173
Decimal	15253421
CIE Lab	80.42, 11.99, 14.58
CIE LCh	80, 18.874, 50.557
Yxy	57.4345, 0.3617, 0.3494
Android (android.graphics.Color)	4293443501 (0xFFE8BFAD)
YUV	201.2070, -13.9061, 27.0055
Hunter-Lab	75.7856, 7.4051, 15.8985

# Details

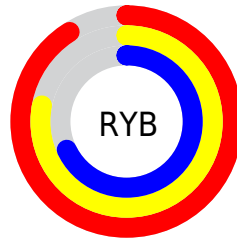
The Hex color **E8BFAD** is a light color, and the websafe version is hex **FFCCCC**. A complement of this color would be **ADD6E8**, and the grayscale version is **C9C9C9**.

A 20% lighter version of the original color is **FFF7E4**, and **B08A79** is the 20% darker color. If you saturate the color by 10%, you get **E8AF96**, and if you desaturate by 10%, it is **E8CFC4**.

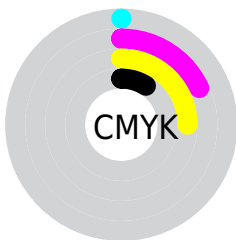
# Distribution



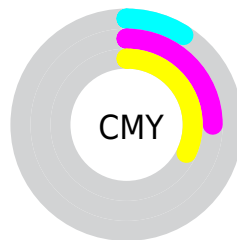
- Red (91%)
- Green (75%)
- Blue (68%)



- Red (91%)
- Yellow (78%)
- Blue (68%)



- Cyan (0%)
- Magenta (18%)
- Yellow (25%)
- Black (9%)



- Cyan (9%)
- Magenta (25%)
- Yellow (32%)

# Brightness & Saturation Gradients

These gradients show how the Hex color E8BFAD changes by changing the brightness by 10 percent. The first figure shows a shift by +10% for each color and the second figure -10%.

Similar to the brightness gradients but the following saturation gradients show a change of the Hex color E8BFAD by changing the saturation by 10% instead.



 E8BFAD

 E8BFAD

FFFFFF

 CBA492

 FFF7E4

 B08A79

 947060

 7A5848

 604032

 472A1C

 301503

 1A0000

 000000

 E8BFAD

 E8BFAD

 E8AF96

 E8CFC4

 E89F7F

 E8DFDB

 E88F67

 E8EFF3

 E87F50

 E8FFFF

 E86E39

 E85E22

 E84E0B

 E84700

# Harmonies

## Analogous

The Analogous color harmony consists of three colors that are next to each other on the color wheel.



EDBCBC



E8BFAD



DBC4A5

# Triad

The Triadic color harmony groups three colors that are evenly spaced from another and form a triangle on the color wheel.



E8BFAD



A3D1C1



C4C5E8

# Complementary

The Complementary color scheme is a pair of colors which are on the opposite of each other on the color wheel.



E8BFAD



ADD6E8

# Split Complementary

Split-complementary colors differ from the complementary color scheme. The scheme consists of three colors, the original color and two neighbors of the complement color.



ADCBEA



E8BFAD



99D2D3

# Square

The Square scheme is like the rectangle color scheme, but the four colors are evenly spaced on the color wheel.



E8BFAD



B4CFB1



9DCFE2



D9BFDE

# Rectangle

The Rectangle color scheme consists of four colors that form a rectangle on the color wheel.



E8BFAD



CFC8A5



9DCFE2



BCC7EA

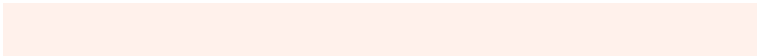


# Sweetspot

The Sweet Spot groups the original color and five complimentary colors.



E8BFAD



FFF1EB



E8ADD6



807773



000000



808080



# Same Dimension

The Same Dimension uses a secret algorithm to generate beautiful new colors.



E8BFAD



FFC8B0



E8DCAD



736B67



B33600



331000

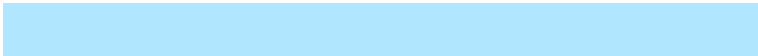


# Inverse Universe

The Inverse Universe completely reimagines the original color for something new.



ADD6E8



B0E7FF



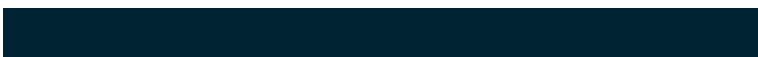
ADB9E8



676F73



007CB3



002333



# Previews

## White Background



This preview shows how the Hex color E8BFAD looks on a white background.

## Color Contrast Check

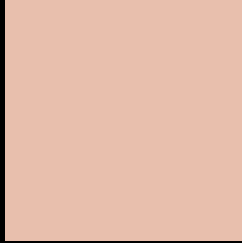
Large Text (above 18pt) WCAG AA × Fail

Any Text WCAG AA × Fail

Large Text (above 18pt) WCAG AAA × Fail

Any Text WCAG AAA × Fail

# Black Background



This preview shows how the Hex color E8BFAD looks on a black background.

## Color Contrast Check

Large Text (above 18pt) WCAG AA ✓ Pass

Any Text WCAG AA ✓ Pass

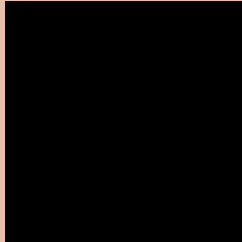
Large Text (above 18pt) WCAG AAA ✓ Pass

Any Text WCAG AAA ✓ Pass

If you want to check with other color combinations, try the [Color Contrast Checker](#).



## Hex E8BFAD Background



This preview shows how black text looks on a background with the Hex color E8BFAD.

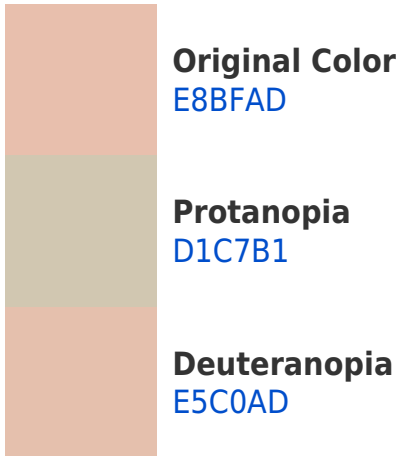


This preview shows how white text looks on a background with the Hex color E8BFAD.

# Color Blindness Simulation

Color vision deficiency is a very complex topic, and I could not describe the different causes any better than Wikipedia does, so if you want to learn more, you should check out their [article about color blindness](#).

## Dichromacy





**Tritanopia**  
EBBBC9

# Trichromacy



**Original Color**  
E8BFAD

**Protanomaly**  
D9C4B0

**Deuteranomaly**  
E6C0AD

**Tritanomaly**  
EABCBF

# Monochromacy



**Original Color**  
E8BFAD

**Achromatopsia**  
C9C9C9

**Achromatomaly**  
D4C5BF

# CSS Examples

## Text

The CSS property to change the color of the text to Hex E8BFAD is called "color". The color property can be set on classes, ids or directly on the HTML element.

This example shows how text in the color #E8BFAD looks like.

```
.text, #text, p{  
    color:#E8BFAD  
}
```

If you want to add a text shadow in that color use the text-shadow property, you can generate a text shadow directly with our [CSS Text Shadow Generator](#).

Here you see how black text with a 4 pixel #E8BFAD colored shadow looks like.

```
.shadow{ text-shadow: 4px 4px 2px #E8BFAD
}
```

## Border

The CSS property to change the border of an element to Hex E8BFAD is called "border". The border property can be set on classes, ids or directly on the HTML element.

This example shows the color as border, it can be applied via the CSS property "border" or "border-color".

```
.border, #border, table{ border:4px solid
#E8BFAD }
```

If only the border color should be changed use the property `border-color`.

```
.border{ border-color:#E8BFAD }
```

If you want to add a box shadow in that color use:

Here you see how a box with a 4 pixel #E8BFAD colored shadow looks like.

```
.boxshadow{ -moz-box-shadow:4px 4px 4px  
4px #E8BFAD; -webkit-box-shadow:4px 4px  
4px 4px #E8BFAD; box-shadow:4px 4px 4px  
4px #E8BFAD }
```

# Background

The CSS property to change the background color of an element to Hex E8BFAD is called "background". The background property can be set on classes, ids or directly on the HTML element.

```
.background, #background, body{  
background:#E8BFAD }
```

If only the background color should be changed can be used:

```
.background{ background-color:#E8BFAD }
```

This example shows the color as background, it is applied via the CSS property "background".

To optimize and compress your CSS code, you can use our [online CSS compressor and optimizer](#) based on csstidy. If you want to create a linear or radial gradient as background or border, check our [CSS Gradient Generator](#).



Hey! You found this booklet interesting? Support Converting Colors with the new Membership Option!

The pro membership hides all ads, plus gives you double the colors in the color bucket, and more awesome pro features!

**[Learn more, Memberships starting at \\$2.50/m!](#)**

**Follow me  
on Twitter!**

@ConvertingColor