

Converting Colors

Hex(E8BFED)

Have a look what the booklet for
Hex(E8BFED) contains.

Hex(E8BFED)	3
<i>Conversions</i>	4
<i>Details</i>	6
<i>Harmonies</i>	11
<i>Previews</i>	23
<i>Color Blindness Simulation</i>	26
<i>CSS Examples</i>	29

Color

Hex(E8BFED)

Conversions

Conversions Part 1

Format	Color
Hex	E8BFED
RGB	232, 191, 237
RGB Percent	91%, 75%, 93%
CMY	0.0902, 0.2510, 0.0706
CMYK	0.02, 0.19, 0.00, 0.07
HSL	293°, 56%, 84%
HSV	293°, 19%, 93%
XYZ	67.1956, 60.5318, 88.2630
YIQ	208.5030, 9.6700, 22.9980

Conversions

Conversions Part 2

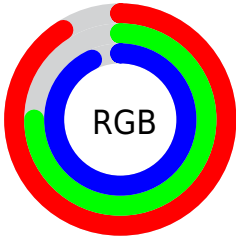
Format	Color
R _Y B	232, 191, 237
Decimal	15253485
CIE Lab	82.13, 22.46, -17.30
CIE LCh	82, 28.351, 322.400
Yxy	60.5318, 0.3111, 0.2803
Android (android.graphics.Color)	4293443565 (0xFFE8BFED)
YUV	208.5030, 14.0490, 20.6069
Hunter-Lab	77.8022, 18.0116, -12.8002

Details

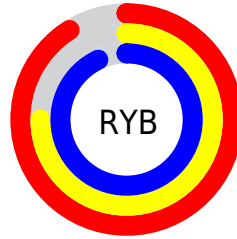
The Hex color **E8BFED** is a light color, and the websafe version is hex **FFCCFF**. A complement of this color would be **C4EDBF**, and the grayscale version is **D0D0D0**.

A 20% lighter version of the original color is **FFF8FF**, and **B089B5** is the 20% darker color. If you saturate the color by 10%, you get **E5A7ED**, and if you desaturate by 10%, it is **EBD7ED**.

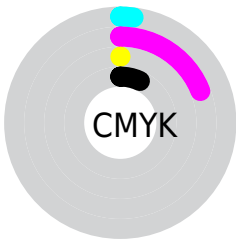
Distribution



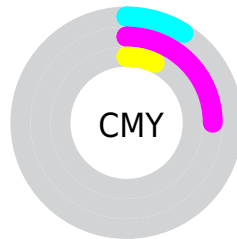
- Red (91%)
- Green (75%)
- Blue (93%)



- Red (91%)
- Yellow (75%)
- Blue (93%)



- Cyan (2%)
- Magenta (19%)
- Yellow (0%)
- Black (7%)



- Cyan (9%)
- Magenta (25%)
- Yellow (7%)

Brightness & Saturation Gradients

These gradients show how the Hex color E8BFED changes by changing the brightness by 10 percent. The first figure shows a shift by +10% for each color and the second figure -10%.

Similar to the brightness gradients but the following saturation gradients show a change of the Hex color E8BFED by changing the saturation by 10% instead.

 E8BFED

FFFFFF

 FFF8FF

 E8BFED

 CCA4D1

 B089B5

 95709A

 7B5780

 623F67

 49294F

 321338

 1F0023

 000009

 E8BFED

 E8BFED

 E5A7ED

 EBD7ED

 E390ED

 EDEEED

 E078ED

 F0FFED

 DE60ED

 F2FFED

 DB49ED

 F5FFED

 D931ED

 F7FFED

 D619ED

 FAFFED

 D301ED

 FDFFED

 D300ED

 FFFFED

Harmonies

Analogous

The Analogous color harmony consists of three colors that are next to each other on the color wheel.



C7C8FD



E8BFED



FDBAD4

Triad

The Triadic color harmony groups three colors that are evenly spaced from another and form a triangle on the color wheel.



E8BFED



E6C898



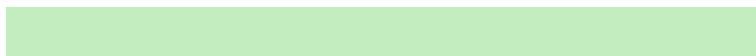
7FDBE0

Complementary

The Complementary color scheme is a pair of colors which are on the opposite of each other on the color wheel.



E8BFED



C4EDBF

Split Complementary

Split-complementary colors differ from the complementary color scheme. The scheme consists of three colors, the original color and two neighbors of the complement color.



90DBC4



E8BFED



CBD19B

Square

The Square scheme is like the rectangle color scheme, but the four colors are evenly spaced on the color wheel.



E8BFED



FAC0A3



ACD7AB



86D8F6

Rectangle

The Rectangle color scheme consists of four colors that form a rectangle on the color wheel.



E8BFED



FFB9C2



ACD7AB



83DBD7

Sweetspot

The Sweet Spot groups the original color and five complimentary colors.



E8BFED



FDF0FF



BFC4ED



7F7780



000000



808080

Same Dimension

The Same Dimension uses a secret algorithm to generate beautiful new colors.



E8BFED



F9C4FF



EDBFDB



746A75



A100B5



300036

Inverse Universe

The Inverse Universe completely reimagines the original color for something new.



EDBFC4



FFC4CB



BFEDD1



756A6B



B50014



360006

Previews

White Background



This preview shows how the Hex color E8BFED looks on a white background.

Color Contrast Check

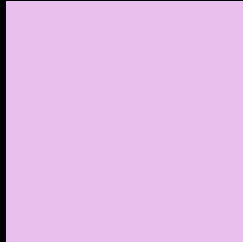
Large Text (above 18pt) WCAG AA × Fail

Any Text WCAG AA × Fail

Large Text (above 18pt) WCAG AAA × Fail

Any Text WCAG AAA × Fail

Black Background



This preview shows how the Hex color E8BFED looks on a black background.

Color Contrast Check

Large Text (above 18pt) WCAG AA ✓ Pass

Any Text WCAG AA ✓ Pass

Large Text (above 18pt) WCAG AAA ✓ Pass

Any Text WCAG AAA ✓ Pass

If you want to check with other color combinations, try the [Color Contrast Checker](#).

Hex E8BFED Background



This preview shows how black text looks on a background with the Hex color E8BFED.

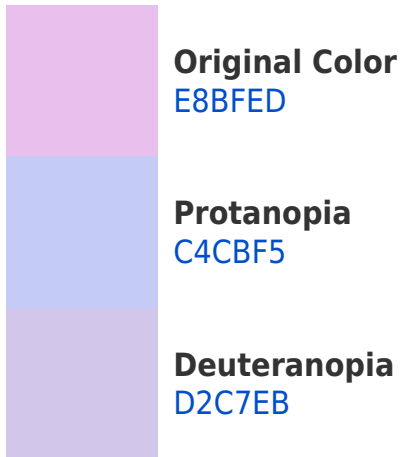


This preview shows how white text looks on a background with the Hex color E8BFED.

Color Blindness Simulation

Color vision deficiency is a very complex topic, and I could not describe the different causes any better than Wikipedia does, so if you want to learn more, you should check out their [article about color blindness](#).

Dichromacy



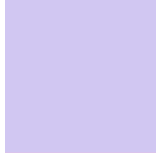


Tritanopia
E4C4D3

Trichromacy



Original Color
E8BFED



Protanomaly
D1C7F2



Deuteranomaly
DAC4EC

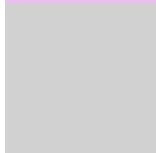


Tritanomaly
E5C2DC

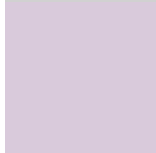
Monochromacy



Original Color
E8BFED



Achromatopsia
D1D1D1



Achromatomaly
D9CADB

CSS Examples

Text

The CSS property to change the color of the text to Hex E8BFED is called "color". The color property can be set on classes, ids or directly on the HTML element.

This example shows how text in the color #E8BFED looks like.

```
.text, #text, p{  
    color:#E8BFED  
}
```

If you want to add a text shadow in that color use the text-shadow property, you can generate a text shadow directly with our [CSS Text Shadow Generator](#).

Here you see how black text with a 4 pixel #E8BFED colored shadow looks like.

```
.shadow{ text-shadow: 4px 4px 2px #E8BFED
}
```

Border

The CSS property to change the border of an element to Hex E8BFED is called "border". The border property can be set on classes, ids or directly on the HTML element.

This example shows the color as border, it can be applied via the CSS property "border" or "border-color".

```
.border, #border, table{ border:4px solid
#E8BFED }
```

If only the border color should be changed use the property `border-color`.

```
.border{ border-color:#E8BFED }
```

If you want to add a box shadow in that color use:

Here you see how a box with a 4 pixel #E8BFED colored shadow looks like.

```
.boxshadow{ -moz-box-shadow:4px 4px 4px  
4px #E8BFED; -webkit-box-shadow:4px 4px  
4px 4px #E8BFED; box-shadow:4px 4px 4px  
4px #E8BFED }
```

Background

The CSS property to change the background color of an element to Hex E8BFED is called "background". The background property can be set on classes, ids or directly on the HTML element.

```
.background, #background, body{  
background:#E8BFED }
```

If only the background color should be changed can be used:

```
.background{ background-color:#E8BFED }
```

This example shows the color as background, it is applied via the CSS property "background".

To optimize and compress your CSS code, you can use our [online CSS compressor and optimizer](#) based on csstidy. If you want to create a linear or radial gradient as background or border, check our [CSS Gradient Generator](#).

Hey! You found this booklet interesting? Support Converting Colors with the new Membership Option!

The pro membership hides all ads, plus gives you double the colors in the color bucket, and more awesome pro features!

[Learn more, Memberships starting at \\$2.50/m!](#)

**Follow me
on Twitter!**

@ConvertingColor