

Converting Colors

Hex(E8C2A9)

Have a look what the booklet for
Hex(E8C2A9) contains.

Hex(E8C2A9)	3
<i>Conversions</i>	4
<i>Details</i>	6
<i>Harmonies</i>	11
<i>Previews</i>	23
<i>Color Blindness Simulation</i>	26
<i>CSS Examples</i>	29

Color

Hex(E8C2A9)

Conversions

Conversions Part 1

Format	Color
Hex	E8C2A9
RGB	232, 194, 169
RGB Percent	91%, 76%, 66%
CMY	0.0902, 0.2392, 0.3373
CMYK	0.00, 0.16, 0.27, 0.09
HSL	24°, 58%, 79%
HSV	24°, 27%, 91%
XYZ	59.7319, 58.6040, 45.6996
YIQ	202.5120, 30.6730, 0.2810

Conversions

Conversions Part 2

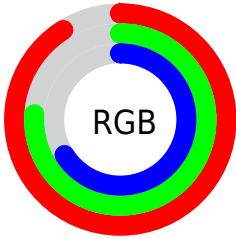
Format	Color
R _Y B	232, 210, 169
Decimal	15254185
CIE Lab	81.07, 9.86, 17.62
CIE LCh	81, 20.194, 60.779
Yxy	58.6040, 0.3641, 0.3573
Android (android.graphics.Color)	4293444265 (0xFFE8C2A9)
YUV	202.5120, -16.5214, 25.8610
Hunter-Lab	76.5532, 5.3095, 18.1932

Details

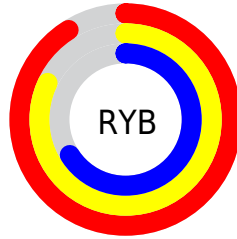
The Hex color **E8C2A9** is a light color, and the websafe version is hex **FFCCCC**. A complement of this color would be **A9CFE8**, and the grayscale version is **CBCBCB**.

A 20% lighter version of the original color is **FFFBE0**, and **B08C75** is the 20% darker color. If you saturate the color by 10%, you get **E8B492**, and if you desaturate by 10%, it is **E8D0C0**.

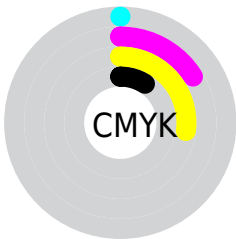
Distribution



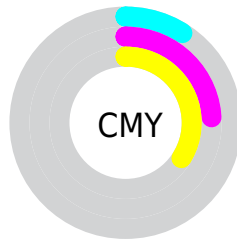
- Red (91%)
- Green (76%)
- Blue (66%)



- Red (91%)
- Yellow (82%)
- Blue (66%)



- Cyan (0%)
- Magenta (16%)
- Yellow (27%)
- Black (9%)



- Cyan (9%)
- Magenta (24%)
- Yellow (34%)

Brightness & Saturation Gradients

These gradients show how the Hex color E8C2A9 changes by changing the brightness by 10 percent. The first figure shows a shift by +10% for each color and the second figure -10%.

Similar to the brightness gradients but the following saturation gradients show a change of the Hex color E8C2A9 by changing the saturation by 10% instead.

 E8C2A9

 E8C2A9

FFFFFF

 CBA78F

 FFFBE0

 B08C75

FFFFFFD

 94735C

 7A5A44

 60432E

 472D19

 301800

 190000

 000000

 E8C2A9

 E8C2A9

 E8B492

 E8D0C0

 E8A67B

 E8DED7

 E89863

 E8ECEf

 E88A4C

 E8FAFF

 E87C35

 E8FFFF

 E86E1E

 E86007

 E85C00

Harmonies

Analogous

The Analogous color harmony consists of three colors that are next to each other on the color wheel.



F0DB7



E8C2A9



D8C8A4

Triad

The Triadic color harmony groups three colors that are evenly spaced from another and form a triangle on the color wheel.



E8C2A9



9DD4C9



CDC4EA

Complementary

The Complementary color scheme is a pair of colors which are on the opposite of each other on the color wheel.



E8C2A9



A9CFE8

Split Complementary

Split-complementary colors differ from the complementary color scheme. The scheme consists of three colors, the original color and two neighbors of the complement color.



B5CBEF



E8C2A9



97D4DC

Square

The Square scheme is like the rectangle color scheme, but the four colors are evenly spaced on the color wheel.



E8C2A9



ADD2B6



A0D0EA



E2BFDC

Rectangle

The Rectangle color scheme consists of four colors that form a rectangle on the color wheel.



E8C2A9



CACCA6



A0D0EA



C5C6EC

Sweetspot

The Sweet Spot groups the original color and five complimentary colors.



E8C2A9



FFF3EB



E8A9D0



807873



000000



808080

Same Dimension

The Same Dimension uses a secret algorithm to generate beautiful new colors.



E8C2A9



FFCCAB



E8E1A9



736C67



B34700



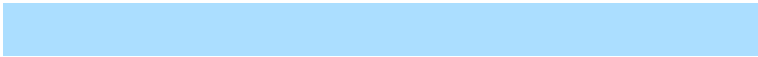
331400

Inverse Universe

The Inverse Universe completely reimagines the original color for something new.



A9CFE8



ABDEFF



A9B0E8



676E73



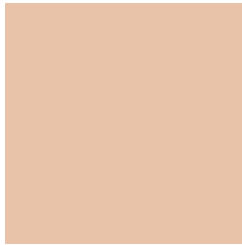
006CB3



001F33

Previews

White Background



This preview shows how the Hex color E8C2A9 looks on a white background.

Color Contrast Check

Large Text (above 18pt) WCAG AA × Fail

Any Text WCAG AA × Fail

Large Text (above 18pt) WCAG AAA × Fail

Any Text WCAG AAA × Fail

Black Background



This preview shows how the Hex color E8C2A9 looks on a black background.

Color Contrast Check

Large Text (above 18pt) WCAG AA ✓ Pass

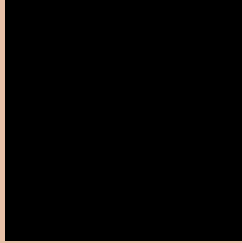
Any Text WCAG AA ✓ Pass

Large Text (above 18pt) WCAG AAA ✓ Pass

Any Text WCAG AAA ✓ Pass

If you want to check with other color combinations, try the [Color Contrast Checker](#).

Hex E8C2A9 Background



This preview shows how black text looks on a background with the Hex color E8C2A9.

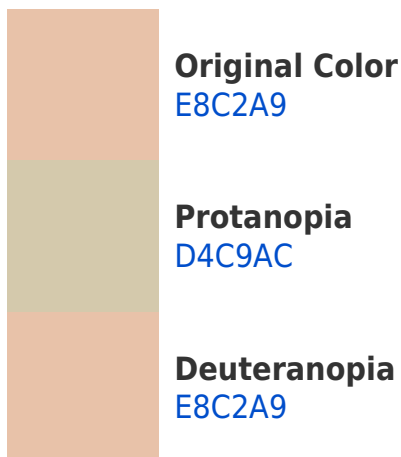


This preview shows how white text looks on a background with the Hex color E8C2A9.

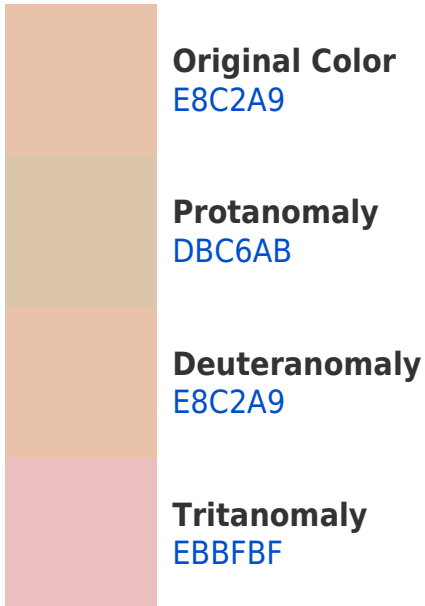
Color Blindness Simulation

Color vision deficiency is a very complex topic, and I could not describe the different causes any better than Wikipedia does, so if you want to learn more, you should check out their [article about color blindness](#).

Dichromacy



Trichromacy



Monochromacy



CSS Examples

Text

The CSS property to change the color of the text to Hex E8C2A9 is called "color". The color property can be set on classes, ids or directly on the HTML element.

This example shows how text in the color #E8C2A9 looks like.

```
.text, #text, p{  
    color:#E8C2A9  
}
```

If you want to add a text shadow in that color use the text-shadow property, you can generate a text shadow directly with our [CSS Text Shadow Generator](#).

Here you see how black text with a 4 pixel #E8C2A9 colored shadow looks like.

```
.shadow{ text-shadow: 4px 4px 2px #E8C2A9
}
```

Border

The CSS property to change the border of an element to Hex E8C2A9 is called "border". The border property can be set on classes, ids or directly on the HTML element.

This example shows the color as border, it can be applied via the CSS property "border" or "border-color".

```
.border, #border, table{ border:4px solid
#E8C2A9 }
```

If only the border color should be changed use the property `border-color`.

```
.border{ border-color:#E8C2A9 }
```

If you want to add a box shadow in that color use:

Here you see how a box with a 4 pixel #E8C2A9 colored shadow looks like.

```
.boxshadow{ -moz-box-shadow:4px 4px 4px  
4px #E8C2A9; -webkit-box-shadow:4px 4px  
4px 4px #E8C2A9; box-shadow:4px 4px 4px  
4px #E8C2A9 }
```

Background

The CSS property to change the background color of an element to Hex E8C2A9 is called "background". The background property can be set on classes, ids or directly on the HTML element.

```
.background, #background, body{  
background:#E8C2A9 }
```

If only the background color should be changed can be used:

```
.background{ background-color:#E8C2A9 }
```

This example shows the color as background, it is applied via the CSS property "background".

To optimize and compress your CSS code, you can use our [online CSS compressor and optimizer](#) based on csstidy. If you want to create a linear or radial gradient as background or border, check our [CSS Gradient Generator](#).

Hey! You found this booklet interesting? Support Converting Colors with the new Membership Option!

The pro membership hides all ads, plus gives you double the colors in the color bucket, and more awesome pro features!

[Learn more, Memberships starting at \\$2.50/m!](#)

**Follow me
on Twitter!**

@ConvertingColor