

Converting Colors

Hex(E8C2B0)

Have a look what the booklet for
Hex(E8C2B0) contains.

Hex(E8C2B0)	3
<i>Conversions</i>	4
<i>Details</i>	6
<i>Harmonies</i>	11
<i>Previews</i>	23
<i>Color Blindness Simulation</i>	26
<i>CSS Examples</i>	29

Color

Hex(E8C2B0)

Conversions

Conversions Part 1

Format	Color
Hex	E8C2B0
RGB	232, 194, 176
RGB Percent	91%, 76%, 69%
CMY	0.0902, 0.2392, 0.3098
CMYK	0.00, 0.16, 0.24, 0.09
HSL	19°, 55%, 80%
HSV	19°, 24%, 91%
XYZ	60.4070, 58.8740, 49.2543
YIQ	203.3100, 28.4260, 2.4580

Conversions

Conversions Part 2

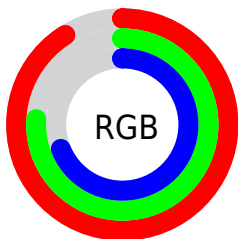
Format	Color
R _Y B	232, 203, 176
Decimal	15254192
CIE Lab	81.22, 10.82, 14.10
CIE LCh	81, 17.772, 52.478
Yxy	58.8740, 0.3584, 0.3493
Android (android.graphics.Color)	4293444272 (0xFFE8C2B0)
YUV	203.3100, -13.4638, 25.1611
Hunter-Lab	76.7294, 6.2518, 15.6510

Details

The Hex color **E8C2B0** is a light color, and the websafe version is hex **FFCCCC**. A complement of this color would be **B0D6E8**, and the grayscale version is **CBCBCB**.

A 20% lighter version of the original color is **FFFBE8**, and **B08C7B** is the 20% darker color. If you saturate the color by 10%, you get **E8B299**, and if you desaturate by 10%, it is **E8D2C7**.

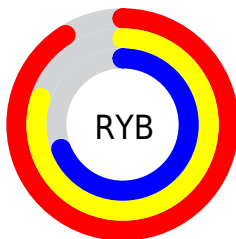
Distribution



Red (91%)

Green (76%)

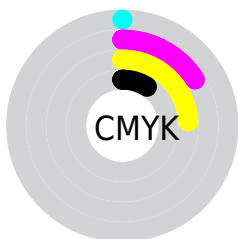
Blue (69%)



Red (91%)

Yellow (80%)

Blue (69%)

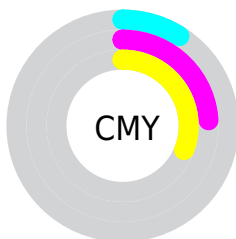


Cyan (0%)

Magenta (16%)

Yellow (24%)

Black (9%)



Cyan (9%)

Magenta (24%)

Yellow (31%)

Brightness & Saturation Gradients

These gradients show how the Hex color E8C2B0 changes by changing the brightness by 10 percent. The first figure shows a shift by +10% for each color and the second figure -10%.

Similar to the brightness gradients but the following saturation gradients show a change of the Hex color E8C2B0 by changing the saturation by 10% instead.

 E8C2B0

 E8C2B0

FFFFFF

 CBA795

 FFFBE8


 B08C7B

 957363

 7A5A4B

 614334

 482C1F

 311807

 1B0000

 000000

 E8C2B0

 E8C2B0

 E8B299

 E8D2C7

 E8A382

 E8E1DE

 E8936A

 E8F1F6

 E88353

 E8FFFF

 E8733C

 E86425

 E8540E

 E84B00

Harmonies

Analogous

The Analogous color harmony consists of three colors that are next to each other on the color wheel.



EDBFBE



E8C2B0



DBC7A9

Triad

The Triadic color harmony groups three colors that are evenly spaced from another and form a triangle on the color wheel.



E8C2B0



A6D3C5



C8C7E8

Complementary

The Complementary color scheme is a pair of colors which are on the opposite of each other on the color wheel.



E8C2B0



B0D6E8

Split Complementary

Split-complementary colors differ from the complementary color scheme. The scheme consists of three colors, the original color and two neighbors of the complement color.



B2CCEA



E8C2B0



9ED3D6

Square

The Square scheme is like the rectangle color scheme, but the four colors are evenly spaced on the color wheel.



E8C2B0



B6D1B5



A3D1E4



DBC2DE

Rectangle

The Rectangle color scheme consists of four colors that form a rectangle on the color wheel.



E8C2B0



D0CBA9



A3D1E4



C0C9EA

Sweetspot

The Sweet Spot groups the original color and five complimentary colors.



E8C2B0



FFF3ED



E8B0D6



807975



000000



808080

Same Dimension

The Same Dimension uses a secret algorithm to generate beautiful new colors.



E8C2B0



FFCDB5



E8DEB0



736B67



B33900



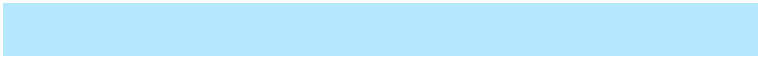
331000

Inverse Universe

The Inverse Universe completely reimagines the original color for something new.



B0D6E8



B5E7FF



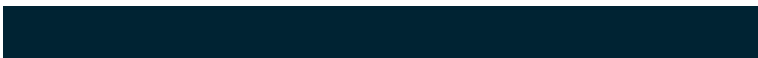
B0BAE8



676F73



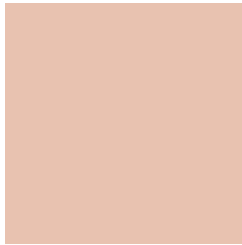
0079B3



002333

Previews

White Background



This preview shows how the Hex color E8C2B0 looks on a white background.

Color Contrast Check

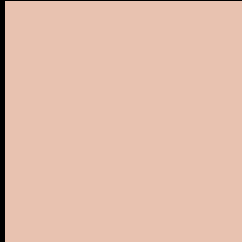
Large Text (above 18pt) WCAG AA × Fail

Any Text WCAG AA × Fail

Large Text (above 18pt) WCAG AAA × Fail

Any Text WCAG AAA × Fail

Black Background



This preview shows how the Hex color E8C2B0 looks on a black background.

Color Contrast Check

Large Text (above 18pt) WCAG AA ✓ Pass

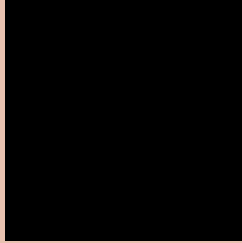
Any Text WCAG AA ✓ Pass

Large Text (above 18pt) WCAG AAA ✓ Pass

Any Text WCAG AAA ✓ Pass

If you want to check with other color combinations, try the [Color Contrast Checker](#).

Hex E8C2B0 Background



This preview shows how black text looks on a background with the Hex color E8C2B0.

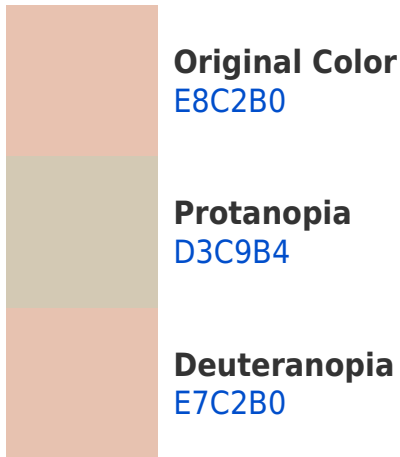


This preview shows how white text looks on a background with the Hex color E8C2B0.

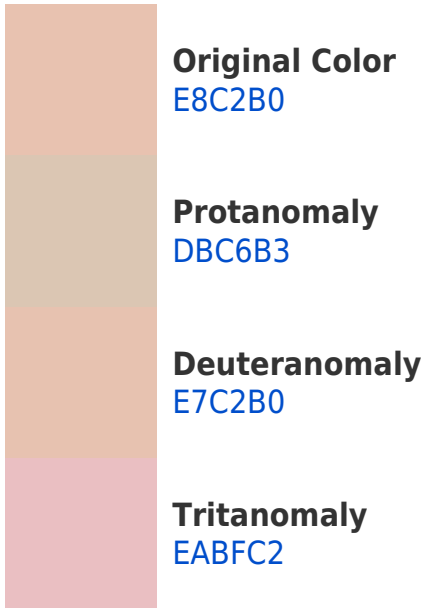
Color Blindness Simulation

Color vision deficiency is a very complex topic, and I could not describe the different causes any better than Wikipedia does, so if you want to learn more, you should check out their [article about color blindness](#).

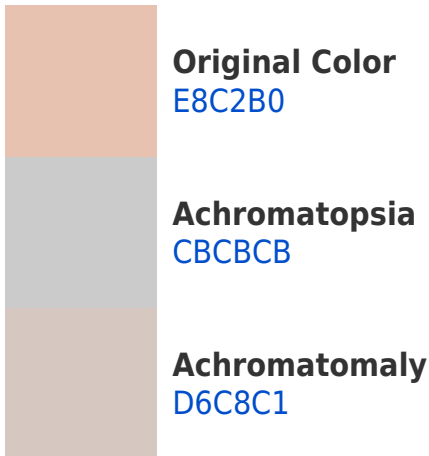
Dichromacy



Trichromacy



Monochromacy



CSS Examples

Text

The CSS property to change the color of the text to Hex E8C2B0 is called "color". The color property can be set on classes, ids or directly on the HTML element.

This example shows how text in the color #E8C2B0 looks like.

```
.text, #text, p{  
    color:#E8C2B0  
}
```

If you want to add a text shadow in that color use the text-shadow property, you can generate a text shadow directly with our [CSS Text Shadow Generator](#).

Here you see how black text with a 4 pixel #E8C2B0 colored shadow looks like.

```
.shadow{ text-shadow: 4px 4px 2px #E8C2B0
}
```

Border

The CSS property to change the border of an element to Hex E8C2B0 is called "border". The border property can be set on classes, ids or directly on the HTML element.

This example shows the color as border, it can be applied via the CSS property "border" or "border-color".

```
.border, #border, table{ border:4px solid
#E8C2B0 }
```

If only the border color should be changed use the property `border-color`.

```
.border{ border-color:#E8C2B0 }
```

If you want to add a box shadow in that color use:

Here you see how a box with a 4 pixel #E8C2B0 colored shadow looks like.

```
.boxshadow{ -moz-box-shadow:4px 4px 4px  
4px #E8C2B0; -webkit-box-shadow:4px 4px  
4px 4px #E8C2B0; box-shadow:4px 4px 4px  
4px #E8C2B0 }
```

Background

The CSS property to change the background color of an element to Hex E8C2B0 is called "background". The background property can be set on classes, ids or directly on the HTML element.

```
.background, #background, body{  
background:#E8C2B0 }
```

If only the background color should be changed can be used:

```
.background{ background-color:#E8C2B0 }
```

This example shows the color as background, it is applied via the CSS property "background".

To optimize and compress your CSS code, you can use our [online CSS compressor and optimizer](#) based on csstidy. If you want to create a linear or radial gradient as background or border, check our [CSS Gradient Generator](#).

Hey! You found this booklet interesting? Support Converting Colors with the new Membership Option!

The pro membership hides all ads, plus gives you double the colors in the color bucket, and more awesome pro features!

[Learn more, Memberships starting at \\$2.50/m!](#)

**Follow me
on Twitter!**

@ConvertingColor