

# Converting Colors

Hex(E8C3F0)

Have a look what the booklet for  
Hex(E8C3F0) contains.

<b>Hex(E8C3F0)</b> .....	3
<i><b>Conversions</b></i> .....	4
<i><b>Details</b></i> .....	6
<i><b>Harmonies</b></i> .....	11
<i><b>Previews</b></i> .....	23
<i><b>Color Blindness Simulation</b></i> .....	26
<i><b>CSS Examples</b></i> .....	29

# Color

**Hex(E8C3F0)**

# Conversions

## Conversions Part 1

Format	Color
Hex	E8C3F0
RGB	232, 195, 240
RGB Percent	91%, 76%, 94%
CMY	0.0902, 0.2353, 0.0588
CMYK	0.03, 0.19, 0.00, 0.06
HSL	289°, 60%, 85%
HSV	289°, 19%, 94%
XYZ	68.5220, 62.4773, 90.8859
YIQ	211.1930, 7.6070, 21.8390

# Conversions

## Conversions Part 2

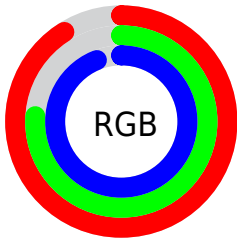
<b>Format</b>	<b>Color</b>
<a href="#">RYB</a>	<a href="#">232, 195, 240</a>
Decimal	<a href="#">15254512</a>
CIELab	<a href="#">83.17, 20.89, -17.33</a>
CIELCh	<a href="#">83, 27.146, 320.316</a>
Yxy	<a href="#">62.4773, 0.3088, 0.2816</a>
Android (android.graphics.Color)	<a href="#">4293444592 (0xFFE8C3F0)</a>
YUV	<a href="#">211.1930, 14.2019, 18.2477</a>
Hunter-Lab	<a href="#">79.0426, 16.4171, -12.8439</a>

# Details

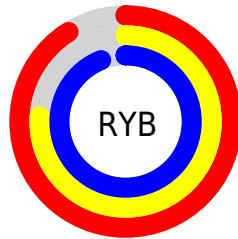
The Hex color **E8C3F0** is a light color, and the websafe version is hex **FFCCFF**. A complement of this color would be **CBF0C3**, and the grayscale version is **D3D3D3**.

A 20% lighter version of the original color is **FFFCFF**, and **B08DB8** is the 20% darker color. If you saturate the color by 10%, you get **E4ABF0**, and if you desaturate by 10%, it is **ECDBF0**.

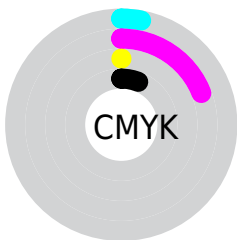
# Distribution



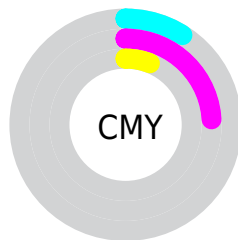
- Red (91%)
- Green (76%)
- Blue (94%)



- Red (91%)
- Yellow (76%)
- Blue (94%)



- Cyan (3%)
- Magenta (19%)
- Yellow (0%)
- Black (6%)



- Cyan (9%)
- Magenta (24%)
- Yellow (6%)

# Brightness & Saturation Gradients

These gradients show how the Hex color E8C3F0 changes by changing the brightness by 10 percent. The first figure shows a shift by +10% for each color and the second figure -10%.

Similar to the brightness gradients but the following saturation gradients show a change of the Hex color E8C3F0 by changing the saturation by 10% instead.



 E8C3F0

FFFFFF

 FFFCFF

 E8C3F0

 CCA8D4

 B08DB8

 95739D

 7B5B83

 62436A

 4A2C51

 32173A

 1E0025

 00010D

 E8C3F0

 E8C3F0

 E4ABF0

 ECDBF0

 DF93F0

 F1F3F0

 DB7BF0

 F5FFF0

 D763F0

 F9FFF0

 D34BF0

 FDFFF0

 CE33F0

 FFFFF0

 CA1BF0

 C603F0

 C500F0

# Harmonies

## Analogous

The Analogous color harmony consists of three colors that are next to each other on the color wheel.



C8CBFF



E8C3F0



FDBED9

# Triad

The Triadic color harmony groups three colors that are evenly spaced from another and form a triangle on the color wheel.



E8C3F0



EACB9D



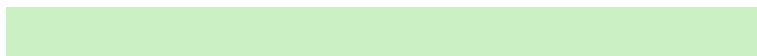
87DDE0

# Complementary

The Complementary color scheme is a pair of colors which are on the opposite of each other on the color wheel.



E8C3F0



CBF0C3

# Split Complementary

Split-complementary colors differ from the complementary color scheme. The scheme consists of three colors, the original color and two neighbors of the complement color.



98DDC6



E8C3F0



D0D39F

# Square

The Square scheme is like the rectangle color scheme, but the four colors are evenly spaced on the color wheel.



E8C3F0



FDC3A9



B3D9AE



8BDAF6

# Rectangle

The Rectangle color scheme consists of four colors that form a rectangle on the color wheel.



E8C3F0



FFBDC7



B3D9AE



8BDED7



# Sweetspot

The Sweet Spot groups the original color and five complimentary colors.



E8C3F0



FCF0FF



C3CBF0



7E7780



000000



808080



# Same Dimension

The Same Dimension uses a secret algorithm to generate beautiful new colors.



E8C3F0



F5C4FF



F0C3E2



766C78



9700B8



2E0038



# Inverse Universe

The Inverse Universe completely reimagines the original color for something new.



F0C3CB



FFC4CF



C3F0D1



786C6E



B80021



38000A



# Previews

## White Background



This preview shows how the Hex color E8C3F0 looks on a white background.

## Color Contrast Check

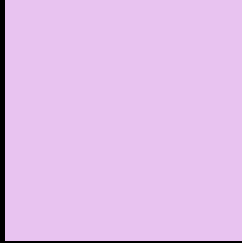
Large Text (above 18pt) WCAG AA × Fail

Any Text WCAG AA × Fail

Large Text (above 18pt) WCAG AAA × Fail

Any Text WCAG AAA × Fail

# Black Background



This preview shows how the Hex color E8C3F0 looks on a black background.

## Color Contrast Check

Large Text (above 18pt) WCAG AA ✓ Pass

Any Text WCAG AA ✓ Pass

Large Text (above 18pt) WCAG AAA ✓ Pass

Any Text WCAG AAA ✓ Pass

If you want to check with other color combinations, try the [Color Contrast Checker](#).



## Hex E8C3F0 Background



This preview shows how black text looks on a background with the Hex color E8C3F0.

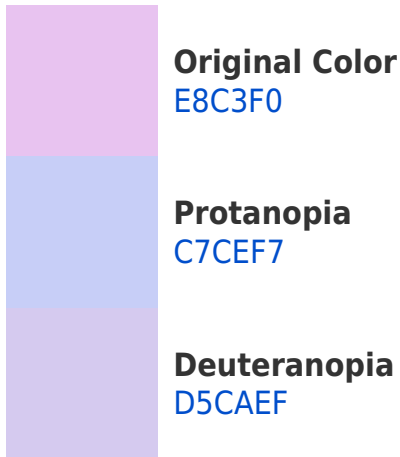


This preview shows how white text looks on a background with the Hex color E8C3F0.

# Color Blindness Simulation

Color vision deficiency is a very complex topic, and I could not describe the different causes any better than Wikipedia does, so if you want to learn more, you should check out their [article about color blindness](#).

## Dichromacy





**Tritanopia**  
E4C7D7

# Trichromacy



**Original Color**  
E8C3F0



**Protanomaly**  
D3CAF4



**Deuteranomaly**  
DCC7EF

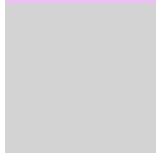


**Tritanomaly**  
E5C6E0

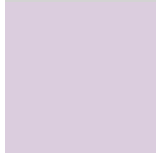
# Monochromacy



**Original Color**  
E8C3F0



**Achromatopsia**  
D3D3D3



**Achromatomaly**  
DBCDDDE

# CSS Examples

## Text

The CSS property to change the color of the text to Hex E8C3F0 is called "color". The color property can be set on classes, ids or directly on the HTML element.

This example shows how text in the color #E8C3F0 looks like.

```
.text, #text, p{  
    color:#E8C3F0  
}
```

If you want to add a text shadow in that color use the text-shadow property, you can generate a text shadow directly with our [CSS Text Shadow Generator](#).

Here you see how black text with a 4 pixel #E8C3F0 colored shadow looks like.

```
.shadow{ text-shadow: 4px 4px 2px #E8C3F0
}
```

## Border

The CSS property to change the border of an element to Hex E8C3F0 is called "border". The border property can be set on classes, ids or directly on the HTML element.

This example shows the color as border, it can be applied via the CSS property "border" or "border-color".

```
.border, #border, table{ border:4px solid
#E8C3F0 }
```

If only the border color should be changed use the property `border-color`.

```
.border{ border-color:#E8C3F0 }
```

If you want to add a box shadow in that color use:

Here you see how a box with a 4 pixel #E8C3F0 colored shadow looks like.

```
.boxshadow{ -moz-box-shadow:4px 4px 4px  
4px #E8C3F0; -webkit-box-shadow:4px 4px  
4px 4px #E8C3F0; box-shadow:4px 4px 4px  
4px #E8C3F0 }
```

# Background

The CSS property to change the background color of an element to Hex E8C3F0 is called "background". The background property can be set on classes, ids or directly on the HTML element.

```
.background, #background, body{  
background:#E8C3F0 }
```

If only the background color should be changed can be used:

```
.background{ background-color:#E8C3F0 }
```

This example shows the color as background, it is applied via the CSS property "background".

To optimize and compress your CSS code, you can use our [online CSS compressor and optimizer](#) based on csstidy. If you want to create a linear or radial gradient as background or border, check our [CSS Gradient Generator](#).



Hey! You found this booklet interesting? Support Converting Colors with the new Membership Option!

The pro membership hides all ads, plus gives you double the colors in the color bucket, and more awesome pro features!

**[Learn more, Memberships starting at \\$2.50/m!](#)**

**Follow me  
on Twitter!**

@ConvertingColor