

# Converting Colors

Hex(E8C5BA)

Have a look what the booklet for  
Hex(E8C5BA) contains.

<b>Hex(E8C5BA)</b> .....	3
<i><b>Conversions</b></i> .....	4
<i><b>Details</b></i> .....	6
<i><b>Harmonies</b></i> .....	11
<i><b>Previews</b></i> .....	23
<i><b>Color Blindness Simulation</b></i> .....	26
<i><b>CSS Examples</b></i> .....	29

# **Color**

**Hex(E8C5BA)**

# Conversions

## Conversions Part 1

Format	Color
Hex	E8C5BA
RGB	232, 197, 186
RGB Percent	91%, 77%, 73%
CMY	0.0902, 0.2275, 0.2706
CMYK	0.00, 0.15, 0.20, 0.09
HSL	14°, 50%, 82%
HSV	14°, 20%, 91%
XYZ	62.1079, 60.6335, 54.8844
YIQ	206.2110, 24.3910, 3.9990

# Conversions

## Conversions Part 2

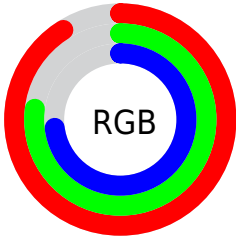
Format	Color
R <sub>Y</sub> B	232, 200, 186
Decimal	15254970
CIE Lab	82.18, 10.69, 10.11
CIE LCh	82, 14.711, 43.405
Yxy	60.6335, 0.3497, 0.3414
Android (android.graphics.Color)	4293445050 (0xFFE8C5BA)
YUV	206.2110, -9.9640, 22.6170
Hunter-Lab	77.8675, 6.1052, 12.7171

# Details

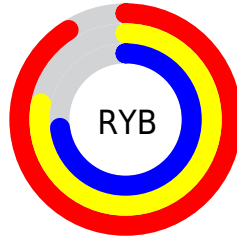
The Hex color **E8C5BA** is a light color, and the websafe version is hex **FFCCCC**. A complement of this color would be **BADDE8**, and the grayscale version is **CECECE**.

A 20% lighter version of the original color is **FFFEF2**, and **B08F85** is the 20% darker color. If you saturate the color by 10%, you get **E8B3A3**, and if you desaturate by 10%, it is **E8D7D1**.

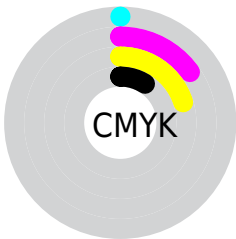
# Distribution



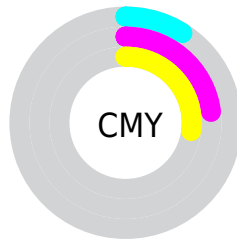
- Red (91%)
- Green (77%)
- Blue (73%)



- Red (91%)
- Yellow (78%)
- Blue (73%)



- Cyan (0%)
- Magenta (15%)
- Yellow (20%)
- Black (9%)



- Cyan (9%)
- Magenta (23%)
- Yellow (27%)

# Brightness & Saturation Gradients

These gradients show how the Hex color E8C5BA changes by changing the brightness by 10 percent. The first figure shows a shift by +10% for each color and the second figure -10%.

Similar to the brightness gradients but the following saturation gradients show a change of the Hex color E8C5BA by changing the saturation by 10% instead.



 E8C5BA

 E8C5BA

FFFFFF

 CCAA9F

 FFFEF2


 B08F85

 95766C

 7B5D53

 61453C

 492F27

 311A12

 1D0000

 000000

 E8C5BA

 E8C5BA

 E8B3A3

 E8D7D1

 E8A28C

 E8E8E8

 E89074

 E8FAFF

 E87E5D

 E8FFFF

 E86D46

 E85B2F

 E84918

 E83800

 E83700

# Harmonies

## Analogous

The Analogous color harmony consists of three colors that are next to each other on the color wheel.



EAC3C7



E8C5BA



DFC9B2

# Triad

The Triadic color harmony groups three colors that are evenly spaced from another and form a triangle on the color wheel.



E8C5BA



B3D4C4



C5CBE7

# Complementary

The Complementary color scheme is a pair of colors which are on the opposite of each other on the color wheel.



E8C5BA



BADDE8

# Split Complementary

Split-complementary colors differ from the complementary color scheme. The scheme consists of three colors, the original color and two neighbors of the complement color.



B5D0E6



E8C5BA



AAD5D2

# Square

The Square scheme is like the rectangle color scheme, but the four colors are evenly spaced on the color wheel.



E8C5BA



C1D1B8



ABD3DF



D7C7E1

# Rectangle

The Rectangle color scheme consists of four colors that form a rectangle on the color wheel.



E8C5BA



D6CCB1



ABD3DF



C0CDE8

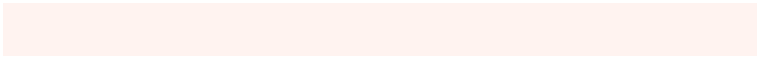


# Sweetspot

The Sweet Spot groups the original color and five complimentary colors.



E8C5BA



FFF3F0



E8BADD



807977



000000



808080



# Same Dimension

The Same Dimension uses a secret algorithm to generate beautiful new colors.



E8C5BA



FFD0C2



E8DCBA



736A67



B32B00



330C00

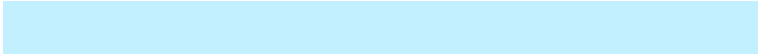


# Inverse Universe

The Inverse Universe completely reimagines the original color for something new.



BADDE8



C2F0FF



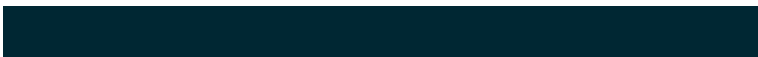
BAC6E8



677073



0088B3

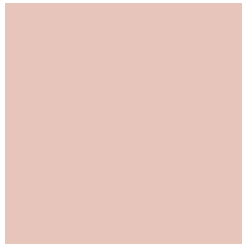


002733



# Previews

## White Background



This preview shows how the Hex color E8C5BA looks on a white background.

## Color Contrast Check

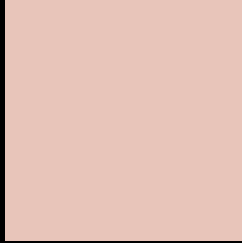
Large Text (above 18pt) WCAG AA × Fail

Any Text WCAG AA × Fail

Large Text (above 18pt) WCAG AAA × Fail

Any Text WCAG AAA × Fail

# Black Background



This preview shows how the Hex color E8C5BA looks on a black background.

## Color Contrast Check

Large Text (above 18pt) WCAG AA ✓ Pass

Any Text WCAG AA ✓ Pass

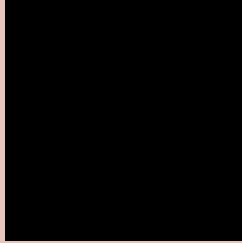
Large Text (above 18pt) WCAG AAA ✓ Pass

Any Text WCAG AAA ✓ Pass

If you want to check with other color combinations, try the [Color Contrast Checker](#).



## Hex E8C5BA Background



This preview shows how black text looks on a background with the Hex color E8C5BA.

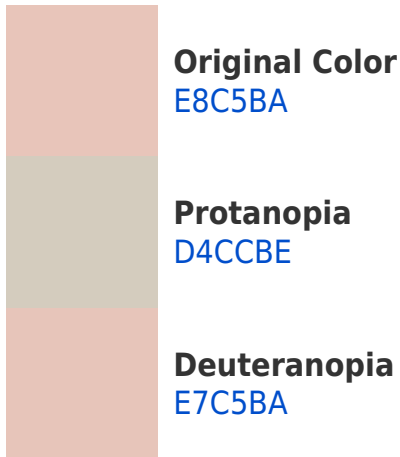


This preview shows how white text looks on a background with the Hex color E8C5BA.

# Color Blindness Simulation

Color vision deficiency is a very complex topic, and I could not describe the different causes any better than Wikipedia does, so if you want to learn more, you should check out their [article about color blindness](#).

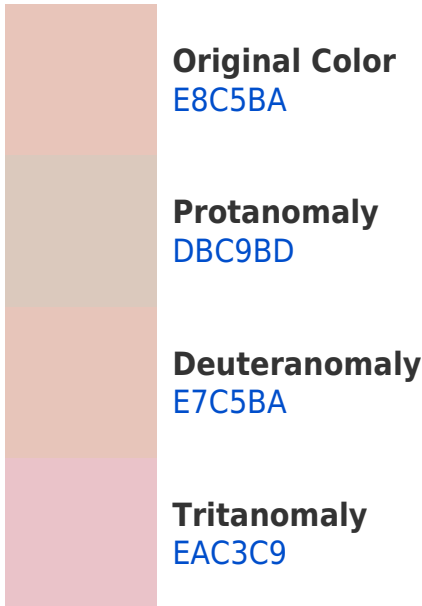
## Dichromacy



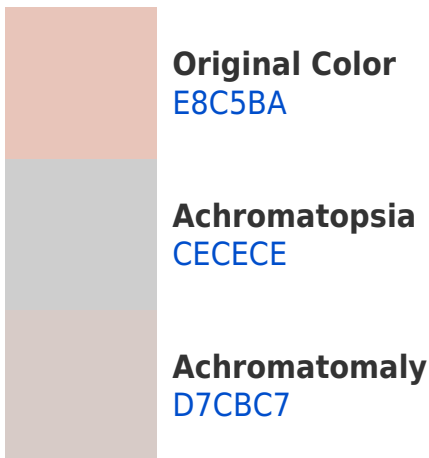


**Tritanopia**  
EBC2D1

# Trichromacy



# Monochromacy



# CSS Examples

## Text

The CSS property to change the color of the text to Hex E8C5BA is called "color". The color property can be set on classes, ids or directly on the HTML element.

This example shows how text in the color #E8C5BA looks like.

```
.text, #text, p{  
    color:#E8C5BA  
}
```

If you want to add a text shadow in that color use the text-shadow property, you can generate a text shadow directly with our [CSS Text Shadow Generator](#).

Here you see how black text with a 4 pixel #E8C5BA colored shadow looks like.

```
.shadow{ text-shadow: 4px 4px 2px #E8C5BA
}
```

## Border

The CSS property to change the border of an element to Hex E8C5BA is called "border". The border property can be set on classes, ids or directly on the HTML element.

This example shows the color as border, it can be applied via the CSS property "border" or "border-color".

```
.border, #border, table{ border:4px solid
#E8C5BA }
```

If only the border color should be changed use the property `border-color`.

```
.border{ border-color:#E8C5BA }
```

If you want to add a box shadow in that color use:

Here you see how a box with a 4 pixel #E8C5BA colored shadow looks like.

```
.boxshadow{ -moz-box-shadow:4px 4px 4px  
4px #E8C5BA; -webkit-box-shadow:4px 4px  
4px 4px #E8C5BA; box-shadow:4px 4px 4px  
4px #E8C5BA }
```

# Background

The CSS property to change the background color of an element to Hex E8C5BA is called "background". The background property can be set on classes, ids or directly on the HTML element.

```
.background, #background, body{  
background:#E8C5BA }
```

If only the background color should be changed can be used:

```
.background{ background-color:#E8C5BA }
```

This example shows the color as background, it is applied via the CSS property "background".

To optimize and compress your CSS code, you can use our [online CSS compressor and optimizer](#) based on csstidy. If you want to create a linear or radial gradient as background or border, check our [CSS Gradient Generator](#).



Hey! You found this booklet interesting? Support Converting Colors with the new Membership Option!

The pro membership hides all ads, plus gives you double the colors in the color bucket, and more awesome pro features!

**[Learn more, Memberships starting at \\$2.50/m!](#)**

**Follow me  
on Twitter!**

@ConvertingColor