

Converting Colors

Hex(E8C5BB)

Have a look what the booklet for
Hex(E8C5BB) contains.

Hex(E8C5BB)	3
<i>Conversions</i>	4
<i>Details</i>	6
<i>Harmonies</i>	11
<i>Previews</i>	23
<i>Color Blindness Simulation</i>	26
<i>CSS Examples</i>	29

Color

Hex(E8C5BB)

Conversions

Conversions Part 1

Format	Color
Hex	E8C5BB
RGB	232, 197, 187
RGB Percent	91%, 77%, 73%
CMY	0.0902, 0.2275, 0.2667
CMYK	0.00, 0.15, 0.19, 0.09
HSL	13°, 49%, 82%
HSV	13°, 19%, 91%
XYZ	62.2146, 60.6762, 55.4463
YIQ	206.3250, 24.0700, 4.3100

Conversions

Conversions Part 2

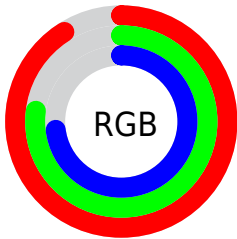
Format	Color
RYB	232, 200, 187
Decimal	15254971
CIELab	82.20, 10.84, 9.61
CIELCh	82, 14.482, 41.557
Yxy	60.6762, 0.3489, 0.3402
Android (android.graphics.Color)	4293445051 (0xFFE8C5BB)
YUV	206.3250, -9.5272, 22.5170
Hunter-Lab	77.8949, 6.2517, 12.3233

Details

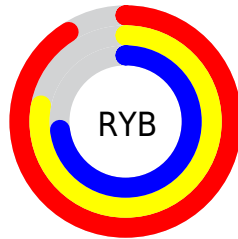
The Hex color **E8C5BB** is a light color, and the websafe version is hex **FFCCCC**. A complement of this color would be **BBDEE8**, and the grayscale version is **CECECE**.

A 20% lighter version of the original color is **FFFEF3**, and **B08F86** is the 20% darker color. If you saturate the color by 10%, you get **E8B3A4**, and if you desaturate by 10%, it is **E8D7D2**.

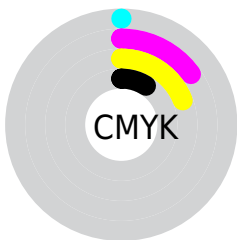
Distribution



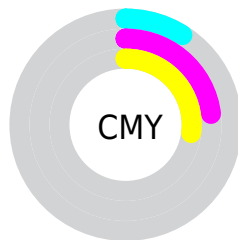
- Red (91%)
- Green (77%)
- Blue (73%)



- Red (91%)
- Yellow (78%)
- Blue (73%)



- Cyan (0%)
- Magenta (15%)
- Yellow (19%)
- Black (9%)



- Cyan (9%)
- Magenta (23%)
- Yellow (27%)

Brightness & Saturation Gradients

These gradients show how the Hex color E8C5BB changes by changing the brightness by 10 percent. The first figure shows a shift by +10% for each color and the second figure -10%.

Similar to the brightness gradients but the following saturation gradients show a change of the Hex color E8C5BB by changing the saturation by 10% instead.

 E8C5BB

FFFFFF

 FFFE3

 E8C5BB

 CCAAA0

 B08F86

 95766D

 7B5D54

 61453D

 492F27

 311A13

 1D0000

 000000

 E8C5BB

 E8C5BB

 E8B3A4

 E8D7D2

 E8A18D

 E8E9E9

 E88F75

 E8FBFF

 E87D5E

 E8FFFF

 E86B47

 E85930

 E84719

 E83501

 E83400

Harmonies

Analogous

The Analogous color harmony consists of three colors that are next to each other on the color wheel.



E9C3C8



E8C5BB



E0C9B3

Triad

The Triadic color harmony groups three colors that are evenly spaced from another and form a triangle on the color wheel.



E8C5BB



B4D4C3



C5CCE7

Complementary

The Complementary color scheme is a pair of colors which are on the opposite of each other on the color wheel.



E8C5BB



BBDEE8

Split Complementary

Split-complementary colors differ from the complementary color scheme. The scheme consists of three colors, the original color and two neighbors of the complement color.



B5D0E6



E8C5BB



ABD5D1

Square

The Square scheme is like the rectangle color scheme, but the four colors are evenly spaced on the color wheel.



E8C5BB



C2D1B8



ABD3DE



D6C7E1

Rectangle

The Rectangle color scheme consists of four colors that form a rectangle on the color wheel.



E8C5BB



D7CCB1



ABD3DE



BFCDE7

Sweetspot

The Sweet Spot groups the original color and five complimentary colors.



E8C5BB



FFF3F0



E8BBDE



807977



000000



808080

Same Dimension

The Same Dimension uses a secret algorithm to generate beautiful new colors.



E8C5BB



FFD1C4



E8DBBB



736A67



B32800



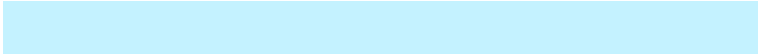
330B00

Inverse Universe

The Inverse Universe completely reimagines the original color for something new.



BBDEE8



C4F2FF



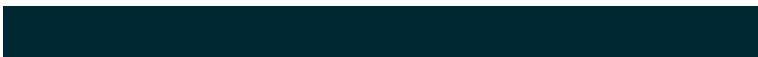
BBC8E8



677073



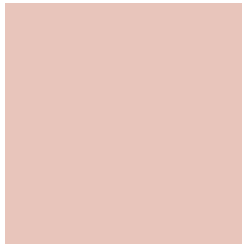
008BB3



002833

Previews

White Background



This preview shows how the Hex color E8C5BB looks on a white background.

Color Contrast Check

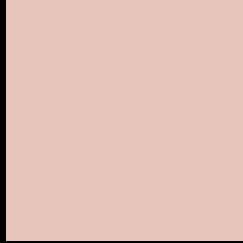
Large Text (above 18pt) WCAG AA × Fail

Any Text WCAG AA × Fail

Large Text (above 18pt) WCAG AAA × Fail

Any Text WCAG AAA × Fail

Black Background



This preview shows how the Hex color E8C5BB looks on a black background.

Color Contrast Check

Large Text (above 18pt) WCAG AA ✓ Pass

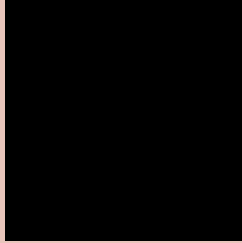
Any Text WCAG AA ✓ Pass

Large Text (above 18pt) WCAG AAA ✓ Pass

Any Text WCAG AAA ✓ Pass

If you want to check with other color combinations, try the [Color Contrast Checker](#).

Hex E8C5BB Background



This preview shows how black text looks on a background with the Hex color E8C5BB.

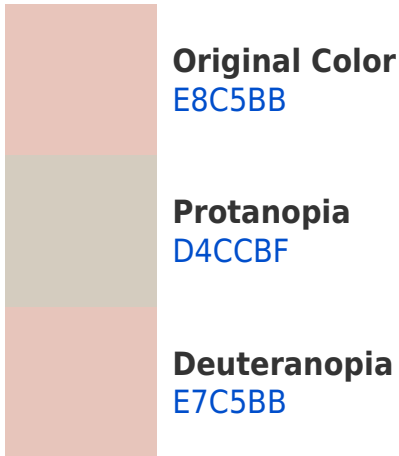


This preview shows how white text looks on a background with the Hex color E8C5BB.

Color Blindness Simulation

Color vision deficiency is a very complex topic, and I could not describe the different causes any better than Wikipedia does, so if you want to learn more, you should check out their [article about color blindness](#).

Dichromacy





Tritanopia
EBC2D1

Trichromacy



Original Color
E8C5BB

Protanomaly
DBC9BE

Deuteranomaly
E7C5BB

Tritanomaly
EAC3C9

Monochromacy



Original Color
E8C5BB

Achromatopsia
CECECE

Achromatomaly
D7CBC7

CSS Examples

Text

The CSS property to change the color of the text to Hex E8C5BB is called "color". The color property can be set on classes, ids or directly on the HTML element.

This example shows how text in the color #E8C5BB looks like.

```
.text, #text, p{  
    color:#E8C5BB  
}
```

If you want to add a text shadow in that color use the text-shadow property, you can generate a text shadow directly with our [CSS Text Shadow Generator](#).

Here you see how black text with a 4 pixel #E8C5BB colored shadow looks like.

```
.shadow{ text-shadow: 4px 4px 2px #E8C5BB  
}
```

Border

The CSS property to change the border of an element to Hex E8C5BB is called "border". The border property can be set on classes, ids or directly on the HTML element.

This example shows the color as border, it can be applied via the CSS property "border" or "border-color".

```
.border, #border, table{ border:4px solid  
#E8C5BB }
```

If only the border color should be changed use the property `border-color`.

```
.border{ border-color:#E8C5BB }
```

If you want to add a box shadow in that color use:

Here you see how a box with a 4 pixel #E8C5BB colored shadow looks like.

```
.boxshadow{ -moz-box-shadow:4px 4px 4px  
4px #E8C5BB; -webkit-box-shadow:4px 4px  
4px 4px #E8C5BB; box-shadow:4px 4px 4px  
4px #E8C5BB }
```

Background

The CSS property to change the background color of an element to Hex E8C5BB is called "background". The background property can be set on classes, ids or directly on the HTML element.

```
.background, #background, body{  
background:#E8C5BB }
```

If only the background color should be changed can be used:

```
.background{ background-color:#E8C5BB }
```

This example shows the color as background, it is applied via the CSS property "background".

To optimize and compress your CSS code, you can use our [online CSS compressor and optimizer](#) based on csstidy. If you want to create a linear or radial gradient as background or border, check our [CSS Gradient Generator](#).

Hey! You found this booklet interesting? Support Converting Colors with the new Membership Option!

The pro membership hides all ads, plus gives you double the colors in the color bucket, and more awesome pro features!

[Learn more, Memberships starting at \\$2.50/m!](#)

**Follow me
on Twitter!**

@ConvertingColor