

Converting Colors

Hex(E8C7BF)

Have a look what the booklet for
Hex(E8C7BF) contains.

Hex(E8C7BF)	3
<i>Conversions</i>	4
<i>Details</i>	6
<i>Harmonies</i>	11
<i>Previews</i>	23
<i>Color Blindness Simulation</i>	26
<i>CSS Examples</i>	29

Color

Hex(E8C7BF)

Conversions

Conversions Part 1

Format	Color
Hex	E8C7BF
RGB	232, 199, 191
RGB Percent	91%, 78%, 75%
CMY	0.0902, 0.2196, 0.2510
CMYK	0.00, 0.14, 0.18, 0.09
HSL	12°, 47%, 83%
HSV	12°, 18%, 91%
XYZ	63.1061, 61.7642, 57.8859
YIQ	207.9550, 22.2360, 4.5080

Conversions

Conversions Part 2

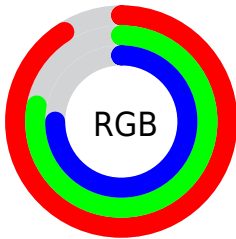
Format	Color
R_{YB}	232, 201, 191
Decimal	15255487
CIE _{Lab}	82.79, 10.39, 8.30
CIE _{LCh}	83, 13.297, 38.646
Yxy	61.7642, 0.3453, 0.3380
Android (android.graphics.Color)	4293445567 (0xFFE8C7BF)
YUV	207.9550, -8.3588, 21.0875
Hunter-Lab	78.5902, 5.7984, 11.3429

Details

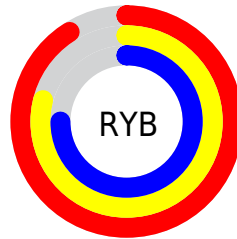
The Hex color **E8C7BF** is a light color, and the websafe version is hex **FFCCCC**. A complement of this color would be **BFE0E8**, and the grayscale version is **D0D0D0**.

A 20% lighter version of the original color is **FFFFFF7**, and **B0918A** is the 20% darker color. If you saturate the color by 10%, you get **E8B4A8**, and if you desaturate by 10%, it is **E8DAD6**.

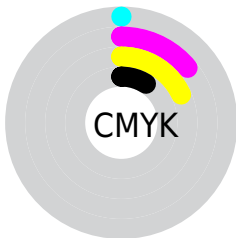
Distribution



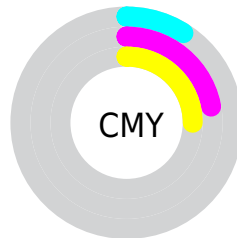
- Red (91%)
- Green (78%)
- Blue (75%)



- Red (91%)
- Yellow (79%)
- Blue (75%)



- Cyan (0%)
- Magenta (14%)
- Yellow (18%)
- Black (9%)



- Cyan (9%)
- Magenta (22%)
- Yellow (25%)

Brightness & Saturation Gradients

These gradients show how the Hex color E8C7BF changes by changing the brightness by 10 percent. The first figure shows a shift by +10% for each color and the second figure -10%.

Similar to the brightness gradients but the following saturation gradients show a change of the Hex color E8C7BF by changing the saturation by 10% instead.

 E8C7BF

 E8C7BF

FFFFFFF

 CCACA4

 FFFFFF7

 B0918A

 957770

 7B5F58

 624740

 49302A

 321B16

 1E0200

 000000

 E8C7BF

 E8C7BF

 E8B4A8

 E8DAD6

 E8A291

 E8ECED

 E88F79

 E8FFFF

 E87C62

 E86A4B

 E85734

 E8441D

 E83205

 E82D00

Harmonies

Analogous

The Analogous color harmony consists of three colors that are next to each other on the color wheel.



E9C6CB



E8C7BF



E1CAB7

Triad

The Triadic color harmony groups three colors that are evenly spaced from another and form a triangle on the color wheel.



E8C7BF



B9D5C5



C5CEE7

Complementary

The Complementary color scheme is a pair of colors which are on the opposite of each other on the color wheel.



E8C7BF



BFE0E8

Split Complementary

Split-complementary colors differ from the complementary color scheme. The scheme consists of three colors, the original color and two neighbors of the complement color.



B7D2E5



E8C7BF



B0D6D1

Square

The Square scheme is like the rectangle color scheme, but the four colors are evenly spaced on the color wheel.



E8C7BF



C6D2BA



AFD5DD



D5CAE2

Rectangle

The Rectangle color scheme consists of four colors that form a rectangle on the color wheel.



E8C7BF



D9CDB5



AFD5DD



C0CFE7

Sweetspot

The Sweet Spot groups the original color and five complimentary colors.



E8C7BF



FFF5F2



E8BFE0



807978



000000



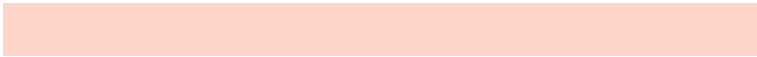
808080

Same Dimension

The Same Dimension uses a secret algorithm to generate beautiful new colors.



E8C7BF



FFD4C9



E8DBBF



736A67



B32300



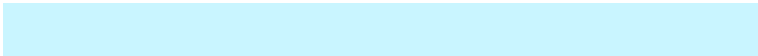
330A00

Inverse Universe

The Inverse Universe completely reimagines the original color for something new.



BFE0E8



C9F5FF



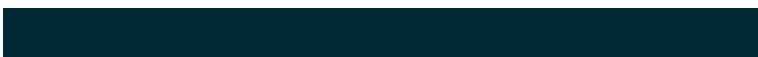
BFCCE8



677173



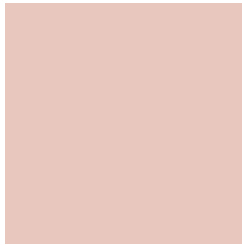
0090B3



002933

Previews

White Background



This preview shows how the Hex color E8C7BF looks on a white background.

Color Contrast Check

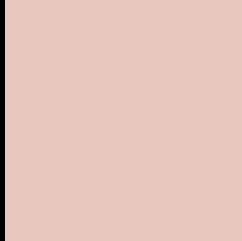
Large Text (above 18pt) WCAG AA × Fail

Any Text WCAG AA × Fail

Large Text (above 18pt) WCAG AAA × Fail

Any Text WCAG AAA × Fail

Black Background



This preview shows how the Hex color E8C7BF looks on a black background.

Color Contrast Check

Large Text (above 18pt) WCAG AA ✓ Pass

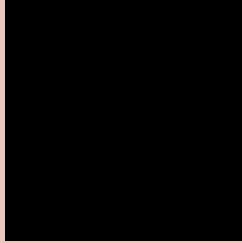
Any Text WCAG AA ✓ Pass

Large Text (above 18pt) WCAG AAA ✓ Pass

Any Text WCAG AAA ✓ Pass

If you want to check with other color combinations, try the [Color Contrast Checker](#).

Hex E8C7BF Background



This preview shows how black text looks on a background with the Hex color E8C7BF.

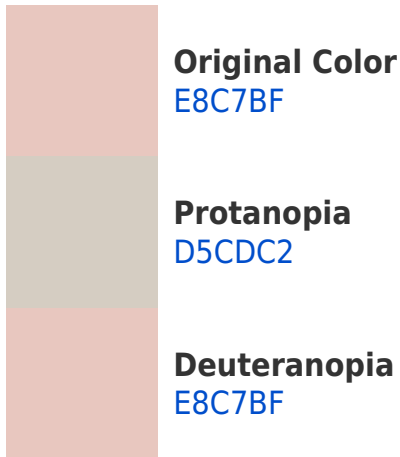


This preview shows how white text looks on a background with the Hex color E8C7BF.

Color Blindness Simulation

Color vision deficiency is a very complex topic, and I could not describe the different causes any better than Wikipedia does, so if you want to learn more, you should check out their [article about color blindness](#).

Dichromacy



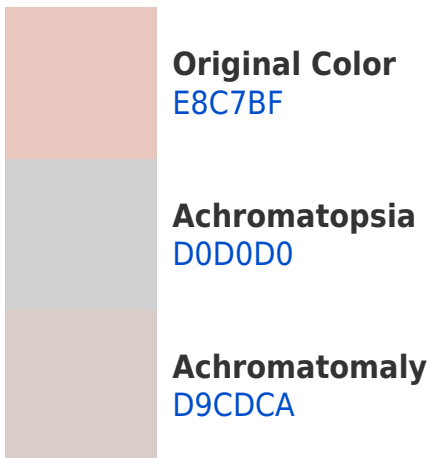


Tritanopia
EBC4D3

Trichromacy



Monochromacy



CSS Examples

Text

The CSS property to change the color of the text to Hex E8C7BF is called "color". The color property can be set on classes, ids or directly on the HTML element.

This example shows how text in the color #E8C7BF looks like.

```
.text, #text, p{  
    color:#E8C7BF  
}
```

If you want to add a text shadow in that color use the text-shadow property, you can generate a text shadow directly with our [CSS Text Shadow Generator](#).

Here you see how black text with a 4 pixel #E8C7BF colored shadow looks like.

```
.shadow{ text-shadow: 4px 4px 2px #E8C7BF  
}
```

Border

The CSS property to change the border of an element to Hex E8C7BF is called "border". The border property can be set on classes, ids or directly on the HTML element.

This example shows the color as border, it can be applied via the CSS property "border" or "border-color".

```
.border, #border, table{ border:4px solid  
#E8C7BF }
```

If only the border color should be changed use the property `border-color`.

```
.border{ border-color:#E8C7BF }
```

If you want to add a box shadow in that color use:

Here you see how a box with a 4 pixel #E8C7BF colored shadow looks like.

```
.boxshadow{ -moz-box-shadow:4px 4px 4px  
4px #E8C7BF; -webkit-box-shadow:4px 4px  
4px 4px #E8C7BF; box-shadow:4px 4px 4px  
4px #E8C7BF }
```

Background

The CSS property to change the background color of an element to Hex E8C7BF is called "background". The background property can be set on classes, ids or directly on the HTML element.

```
.background, #background, body{  
background:#E8C7BF }
```

If only the background color should be changed can be used:

```
.background{ background-color:#E8C7BF }
```

This example shows the color as background, it is applied via the CSS property "background".

To optimize and compress your CSS code, you can use our [online CSS compressor and optimizer](#) based on csstidy. If you want to create a linear or radial gradient as background or border, check our [CSS Gradient Generator](#).

Hey! You found this booklet interesting? Support Converting Colors with the new Membership Option!

The pro membership hides all ads, plus gives you double the colors in the color bucket, and more awesome pro features!

[Learn more, Memberships starting at \\$2.50/m!](#)

**Follow me
on Twitter!**

@ConvertingColor