

Converting Colors

Hex(E8C9BF)

Have a look what the booklet for
Hex(E8C9BF) contains.

Hex(E8C9BF)	3
<i>Conversions</i>	4
<i>Details</i>	6
<i>Harmonies</i>	11
<i>Previews</i>	23
<i>Color Blindness Simulation</i>	26
<i>CSS Examples</i>	29

Color

Hex(E8C9BF)

Conversions

Conversions Part 1

Format	Color
Hex	E8C9BF
RGB	232, 201, 191
RGB Percent	91%, 79%, 75%
CMY	0.0902, 0.2118, 0.2510
CMYK	0.00, 0.13, 0.18, 0.09
HSL	15°, 47%, 83%
HSV	15°, 18%, 91%
XYZ	63.5693, 62.6907, 58.0403
YIQ	209.1290, 21.6860, 3.4620

Conversions

Conversions Part 2

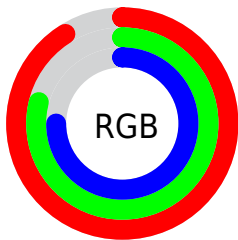
Format	Color
R _Y B	232, 204, 191
Decimal	15255999
CIE Lab	83.28, 9.33, 9.01
CIE LCh	83, 12.970, 43.988
Yxy	62.6907, 0.3449, 0.3402
Android (android.graphics.Color)	4293446079 (0xFFE8C9BF)
YUV	209.1290, -8.9376, 20.0579
Hunter-Lab	79.1774, 4.7521, 11.9623

Details

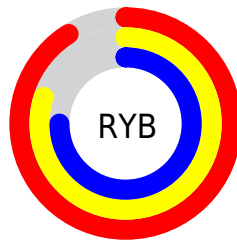
The Hex color **E8C9BF** is a light color, and the websafe version is hex **FFCCCC**. A complement of this color would be **BFDEE8**, and the grayscale version is **D1D1D1**.

A 20% lighter version of the original color is **FFFFFF7**, and **B0938A** is the 20% darker color. If you saturate the color by 10%, you get **E8B7A8**, and if you desaturate by 10%, it is **E8DBD6**.

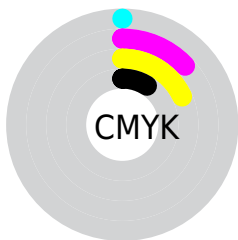
Distribution



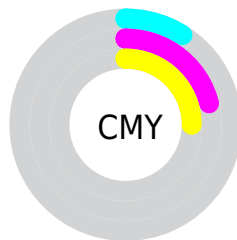
- Red (91%)
- Green (79%)
- Blue (75%)



- Red (91%)
- Yellow (80%)
- Blue (75%)



- Cyan (0%)
- Magenta (13%)
- Yellow (18%)
- Black (9%)



- Cyan (9%)
- Magenta (21%)
- Yellow (25%)

Brightness & Saturation Gradients

These gradients show how the Hex color E8C9BF changes by changing the brightness by 10 percent. The first figure shows a shift by +10% for each color and the second figure -10%.

Similar to the brightness gradients but the following saturation gradients show a change of the Hex color E8C9BF by changing the saturation by 10% instead.

 E8C9BF

 E8C9BF

FFFFFFF

 CCAEA4

 FFFFF7

 B0938A

 957970

 7B6058

 624940

 49322A

 321D16

 1E0400

 000000

 E8C9BF

 E8C9BF

 E8B7A8

 E8DBD6

 E8A691

 E8ECED

 E89479

 E8FEFF

 E88362

 E8FFFF

 E8714B

 E86034

 E84E1D

 E83D05

 E83900

Harmonies

Analogous

The Analogous color harmony consists of three colors that are next to each other on the color wheel.



EAC7CA



E8C9BF



E0CCB8

Triad

The Triadic color harmony groups three colors that are evenly spaced from another and form a triangle on the color wheel.



E8C9BF



B9D6C8



CACFE7

Complementary

The Complementary color scheme is a pair of colors which are on the opposite of each other on the color wheel.



E8C9BF



BFDEE8

Split Complementary

Split-complementary colors differ from the complementary color scheme. The scheme consists of three colors, the original color and two neighbors of the complement color.



BBD3E7



E8C9BF



B2D7D5

Square

The Square scheme is like the rectangle color scheme, but the four colors are evenly spaced on the color wheel.



E8C9BF



C5D4BE



B2D5E0



D9CBE1

Rectangle

The Rectangle color scheme consists of four colors that form a rectangle on the color wheel.



E8C9BF



D8CFB7



B2D5E0



C5D0E8

Sweetspot

The Sweet Spot groups the original color and five complimentary colors.



E8C9BF



FFF5F2



E8BFDE



807A78



000000



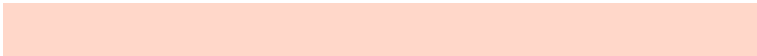
808080

Same Dimension

The Same Dimension uses a secret algorithm to generate beautiful new colors.



E8C9BF



FFD7C9



E8DDBF



736A67



B32C00



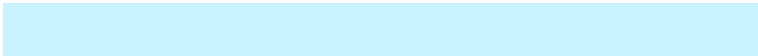
330C00

Inverse Universe

The Inverse Universe completely reimagines the original color for something new.



BFDEE8



C9F2FF



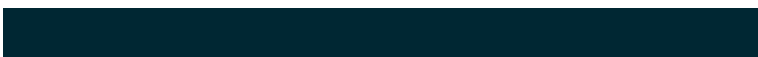
BFCAE8



677073



0087B3



002733

Previews

White Background



This preview shows how the Hex color E8C9BF looks on a white background.

Color Contrast Check

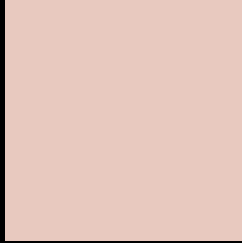
Large Text (above 18pt) WCAG AA × Fail

Any Text WCAG AA × Fail

Large Text (above 18pt) WCAG AAA × Fail

Any Text WCAG AAA × Fail

Black Background



This preview shows how the Hex color E8C9BF looks on a black background.

Color Contrast Check

Large Text (above 18pt) WCAG AA ✓ Pass

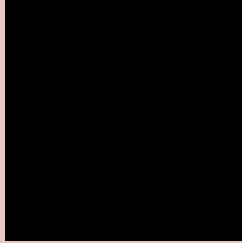
Any Text WCAG AA ✓ Pass

Large Text (above 18pt) WCAG AAA ✓ Pass

Any Text WCAG AAA ✓ Pass

If you want to check with other color combinations, try the [Color Contrast Checker](#).

Hex E8C9BF Background



This preview shows how black text looks on a background with the Hex color E8C9BF.



This preview shows how white text looks on a background with the Hex color E8C9BF.

Color Blindness Simulation

Color vision deficiency is a very complex topic, and I could not describe the different causes any better than Wikipedia does, so if you want to learn more, you should check out their [article about color blindness](#).

Dichromacy





Tritanopia
EBC6D5

Trichromacy



Original Color
E8C9BF

Protanomaly
DDCDC1

Deuteranomaly
E9C8BF

Tritanomaly
EAC7CD

Monochromacy



Original Color
E8C9BF

Achromatopsia
D1D1D1

Achromatomaly
D9CECA

CSS Examples

Text

The CSS property to change the color of the text to Hex E8C9BF is called "color". The color property can be set on classes, ids or directly on the HTML element.

This example shows how text in the color #E8C9BF looks like.

```
.text, #text, p{  
    color:#E8C9BF  
}
```

If you want to add a text shadow in that color use the text-shadow property, you can generate a text shadow directly with our [CSS Text Shadow Generator](#).

Here you see how black text with a 4 pixel #E8C9BF colored shadow looks like.

```
.shadow{ text-shadow: 4px 4px 2px #E8C9BF
}
```

Border

The CSS property to change the border of an element to Hex E8C9BF is called "border". The border property can be set on classes, ids or directly on the HTML element.

This example shows the color as border, it can be applied via the CSS property "border" or "border-color".

```
.border, #border, table{ border:4px solid
#E8C9BF }
```

If only the border color should be changed use the property border-color.

```
.border{ border-color:#E8C9BF }
```

If you want to add a box shadow in that color use:

Here you see how a box with a 4 pixel #E8C9BF colored shadow looks like.

```
.boxshadow{ -moz-box-shadow:4px 4px 4px  
4px #E8C9BF; -webkit-box-shadow:4px 4px  
4px 4px #E8C9BF; box-shadow:4px 4px 4px  
4px #E8C9BF }
```

Background

The CSS property to change the background color of an element to Hex E8C9BF is called "background". The background property can be set on classes, ids or directly on the HTML element.

```
.background, #background, body{  
background:#E8C9BF }
```

If only the background color should be changed can be used:

```
.background{ background-color:#E8C9BF }
```

This example shows the color as background, it is applied via the CSS property "background".

To optimize and compress your CSS code, you can use our [online CSS compressor and optimizer](#) based on csstidy. If you want to create a linear or radial gradient as background or border, check our [CSS Gradient Generator](#).

Hey! You found this booklet interesting? Support Converting Colors with the new Membership Option!

The pro membership hides all ads, plus gives you double the colors in the color bucket, and more awesome pro features!

[Learn more, Memberships starting at \\$2.50/m!](#)

**Follow me
on Twitter!**

@ConvertingColor