

Converting Colors

Hex(E8C9C2)

Have a look what the booklet for
Hex(E8C9C2) contains.

Hex(E8C9C2)	3
<i>Conversions</i>	4
<i>Details</i>	6
<i>Harmonies</i>	11
<i>Previews</i>	23
<i>Color Blindness Simulation</i>	26
<i>CSS Examples</i>	29

Color

Hex(E8C9C2)

Conversions

Conversions Part 1

Format	Color
Hex	E8C9C2
RGB	232, 201, 194
RGB Percent	91%, 79%, 76%
CMY	0.0902, 0.2118, 0.2392
CMYK	0.00, 0.13, 0.16, 0.09
HSL	11°, 45%, 84%
HSV	11°, 16%, 91%
XYZ	63.9030, 62.8241, 59.7972
YIQ	209.4710, 20.7230, 4.3950

Conversions

Conversions Part 2

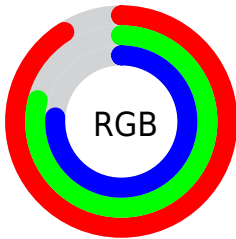
Format	Color
R _Y B	232, 203, 194
Decimal	15256002
CIE Lab	83.35, 9.79, 7.51
CIE LCh	83, 12.340, 37.484
Yxy	62.8241, 0.3426, 0.3368
Android (android.graphics.Color)	4293446082 (0xFFE8C9C2)
YUV	209.4710, -7.6272, 19.7579
Hunter-Lab	79.2617, 5.2037, 10.7532

Details

The Hex color **E8C9C2** is a light color, and the websafe version is hex **FFCCCC**. A complement of this color would be **C2E1E8**, and the grayscale version is **D2D2D2**.

A 20% lighter version of the original color is **FFFFFFA**, and **B0938C** is the 20% darker color. If you saturate the color by 10%, you get **E8B6AB**, and if you desaturate by 10%, it is **E8DCD9**.

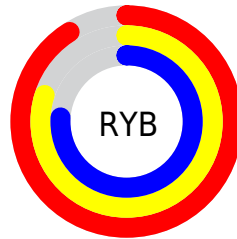
Distribution



Red (91%)

Green (79%)

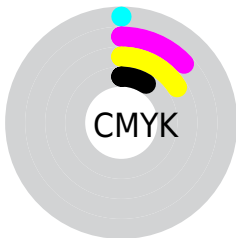
Blue (76%)



Red (91%)

Yellow (80%)

Blue (76%)

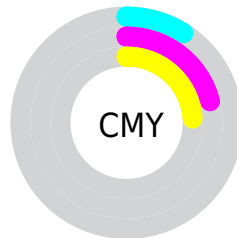


Cyan (0%)

Magenta (13%)

Yellow (16%)

Black (9%)



Cyan (9%)

Magenta (21%)

Yellow (24%)

Brightness & Saturation Gradients

These gradients show how the Hex color E8C9C2 changes by changing the brightness by 10 percent. The first figure shows a shift by +10% for each color and the second figure -10%.

Similar to the brightness gradients but the following saturation gradients show a change of the Hex color E8C9C2 by changing the saturation by 10% instead.

 E8C9C2

 E8C9C2

FFFFFF

 CCAEA7

 FFFFFA

 B0938C

 957973

 7B605A

 624943

 49322D

 321D18

 1F0400

 000000

 E8C9C2

 E8C9C2

 E8B6AB

 E8DCD9

 E8A394

 E8EFF0

 E8907C

 E8FFFF

 E87D65

 E86A4E

 E85737

 E84520

 E83208

 E82B00

Harmonies

Analogous

The Analogous color harmony consists of three colors that are next to each other on the color wheel.



E8C8CD



E8C9C2



E1CCBB

Triad

The Triadic color harmony groups three colors that are evenly spaced from another and form a triangle on the color wheel.



E8C9C2



BCD6C6



C7D0E6

Complementary

The Complementary color scheme is a pair of colors which are on the opposite of each other on the color wheel.



E8C9C2



C2E1E8

Split Complementary

Split-complementary colors differ from the complementary color scheme. The scheme consists of three colors, the original color and two neighbors of the complement color.



BAD3E5



E8C9C2



B4D7D2

Square

The Square scheme is like the rectangle color scheme, but the four colors are evenly spaced on the color wheel.



E8C9C2



C9D3BD



B3D6DD



D6CCE2

Rectangle

The Rectangle color scheme consists of four colors that form a rectangle on the color wheel.



E8C9C2



DACEB9



B3D6DD



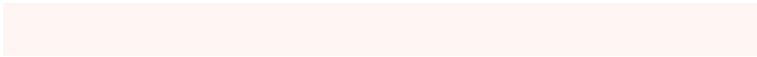
C2D1E7

Sweetspot

The Sweet Spot groups the original color and five complimentary colors.



E8C9C2



FFF5F2



E8C2E1



807978



000000



808080

Same Dimension

The Same Dimension uses a secret algorithm to generate beautiful new colors.



E8C9C2



FFD5CC



E8DCC2



736967



B32100



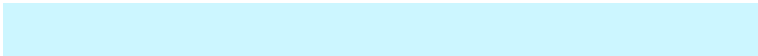
330900

Inverse Universe

The Inverse Universe completely reimagines the original color for something new.



C2E1E8



CCF6FF



C2CEE8



677173



0092B3



002A33

Previews

White Background



This preview shows how the Hex color E8C9C2 looks on a white background.

Color Contrast Check

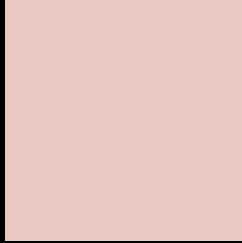
Large Text (above 18pt) WCAG AA × Fail

Any Text WCAG AA × Fail

Large Text (above 18pt) WCAG AAA × Fail

Any Text WCAG AAA × Fail

Black Background



This preview shows how the Hex color E8C9C2 looks on a black background.

Color Contrast Check

Large Text (above 18pt) WCAG AA ✓ Pass

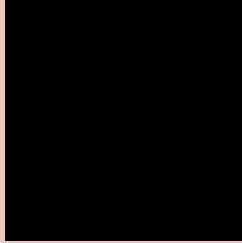
Any Text WCAG AA ✓ Pass

Large Text (above 18pt) WCAG AAA ✓ Pass

Any Text WCAG AAA ✓ Pass

If you want to check with other color combinations, try the [Color Contrast Checker](#).

Hex E8C9C2 Background



This preview shows how black text looks on a background with the Hex color E8C9C2.

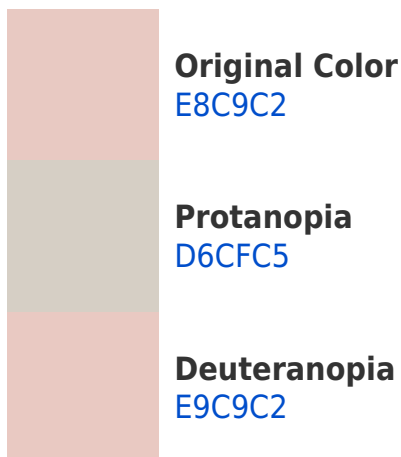


This preview shows how white text looks on a background with the Hex color E8C9C2.

Color Blindness Simulation

Color vision deficiency is a very complex topic, and I could not describe the different causes any better than Wikipedia does, so if you want to learn more, you should check out their [article about color blindness](#).

Dichromacy





Tritanopia
EAC6D5

Trichromacy



Original Color
E8C9C2

Protanomaly
DDCDC4

Deuteranomaly
E9C9C2

Tritanomaly
E9C7CE

Monochromacy



Original Color
E8C9C2

Achromatopsia
D1D1D1

Achromatomaly
D9CECC

CSS Examples

Text

The CSS property to change the color of the text to Hex E8C9C2 is called "color". The color property can be set on classes, ids or directly on the HTML element.

This example shows how text in the color #E8C9C2 looks like.

```
.text, #text, p{  
    color:#E8C9C2  
}
```

If you want to add a text shadow in that color use the text-shadow property, you can generate a text shadow directly with our [CSS Text Shadow Generator](#).

Here you see how black text with a 4 pixel #E8C9C2 colored shadow looks like.

```
.shadow{ text-shadow: 4px 4px 2px #E8C9C2
}
```

Border

The CSS property to change the border of an element to Hex E8C9C2 is called "border". The border property can be set on classes, ids or directly on the HTML element.

This example shows the color as border, it can be applied via the CSS property "border" or "border-color".

```
.border, #border, table{ border:4px solid
#E8C9C2 }
```

If only the border color should be changed use the property `border-color`.

```
.border{ border-color:#E8C9C2 }
```

If you want to add a box shadow in that color use:

Here you see how a box with a 4 pixel #E8C9C2 colored shadow looks like.

```
.boxshadow{ -moz-box-shadow:4px 4px 4px  
4px #E8C9C2; -webkit-box-shadow:4px 4px  
4px 4px #E8C9C2; box-shadow:4px 4px 4px  
4px #E8C9C2 }
```

Background

The CSS property to change the background color of an element to Hex E8C9C2 is called "background". The background property can be set on classes, ids or directly on the HTML element.

```
.background, #background, body{  
background:#E8C9C2 }
```

If only the background color should be changed can be used:

```
.background{ background-color:#E8C9C2 }
```

This example shows the color as background, it is applied via the CSS property "background".

To optimize and compress your CSS code, you can use our [online CSS compressor and optimizer](#) based on csstidy. If you want to create a linear or radial gradient as background or border, check our [CSS Gradient Generator](#).

Hey! You found this booklet interesting? Support Converting Colors with the new Membership Option!

The pro membership hides all ads, plus gives you double the colors in the color bucket, and more awesome pro features!

[Learn more, Memberships starting at \\$2.50/m!](#)

**Follow me
on Twitter!**

@ConvertingColor