

Converting Colors

Hex(E8CBC9)

Have a look what the booklet for
Hex(E8CBC9) contains.

Hex(E8CBC9)	3
<i>Conversions</i>	4
<i>Details</i>	6
<i>Harmonies</i>	11
<i>Previews</i>	23
<i>Color Blindness Simulation</i>	26
<i>CSS Examples</i>	29

Color

Hex(E8CBC9)

Conversions

Conversions Part 1

Format	Color
Hex	E8CBC9
RGB	232, 203, 201
RGB Percent	91%, 80%, 79%
CMY	0.0902, 0.2039, 0.2118
CMYK	0.00, 0.13, 0.13, 0.09
HSL	4°, 40%, 85%
HSV	4°, 13%, 91%
XYZ	65.1773, 64.0847, 64.1927
YIQ	211.4430, 17.9260, 5.5260

Conversions

Conversions Part 2

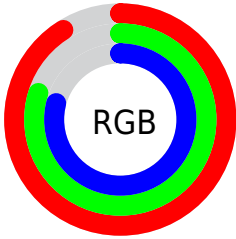
Format	Color
RYB	232, 203, 201
Decimal	15256521
CIELab	84.01, 9.84, 4.73
CIElCh	84, 10.916, 25.669
Yxy	64.0847, 0.3369, 0.3313
Android (android.graphics.Color)	4293446601 (0xFFE8CBC9)
YUV	211.4430, -5.1484, 18.0285
Hunter-Lab	80.0529, 5.2380, 8.4937

Details

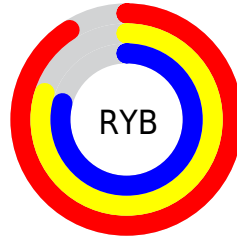
The Hex color **E8CBC9** is a light color, and the websafe version is hex **FFCCCC**. A complement of this color would be **C9E6E8**, and the grayscale version is **D3D3D3**.

A 20% lighter version of the original color is **FFFFFF**, and **B09593** is the 20% darker color. If you saturate the color by 10%, you get **E8B5B2**, and if you desaturate by 10%, it is **E8E1E0**.

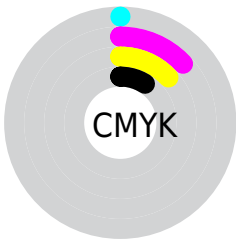
Distribution



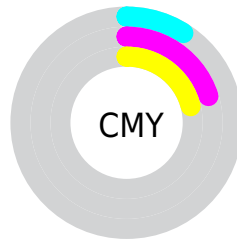
- Red (91%)
- Green (80%)
- Blue (79%)



- Red (91%)
- Yellow (80%)
- Blue (79%)



- Cyan (0%)
- Magenta (13%)
- Yellow (13%)
- Black (9%)



- Cyan (9%)
- Magenta (20%)
- Yellow (21%)

Brightness & Saturation Gradients

These gradients show how the Hex color E8CBC9 changes by changing the brightness by 10 percent. The first figure shows a shift by +10% for each color and the second figure -10%.

Similar to the brightness gradients but the following saturation gradients show a change of the Hex color E8CBC9 by changing the saturation by 10% instead.

 E8CBC9

FFFFFF

 E8CBC9

 CCB0AE

 B09593

 957B79

 7B6261

 624A49

 4A3432

 331E1D

 1F0704

 000000

 E8CBC9

 E8CBC9

 E8B5B2

 E8E1E0

 E8A09B

 E8F6F7

 E88A83

 E8FFFF

 E8746C

 E85E55

 E8493E

 E83327

 E81D0F

 E80F00

Harmonies

Analogous

The Analogous color harmony consists of three colors that are next to each other on the color wheel.



E6CBD3



E8CBC9



E4CDC1

Triad

The Triadic color harmony groups three colors that are evenly spaced from another and form a triangle on the color wheel.



E8CBC9



C5D6C6



C5D3E6

Complementary

The Complementary color scheme is a pair of colors which are on the opposite of each other on the color wheel.



E8CBC9



C9E6E8

Split Complementary

Split-complementary colors differ from the complementary color scheme. The scheme consists of three colors, the original color and two neighbors of the complement color.



BCD6E2



E8CBC9



BCD8D0

Square

The Square scheme is like the rectangle color scheme, but the four colors are evenly spaced on the color wheel.



E8CBC9



D0D4BF



B8D7DA



D2CFE4

Rectangle

The Rectangle color scheme consists of four colors that form a rectangle on the color wheel.



E8CBC9



DFCFBE



B8D7DA



C1D4E5

Sweetspot

The Sweet Spot groups the original color and five complimentary colors.



E8CBC9



FFF5F5



E8C9E6



807A79



000000



808080

Same Dimension

The Same Dimension uses a secret algorithm to generate beautiful new colors.



E8CBC9



FFD9D6



E8DAC9



736867



B30C00



330300

Inverse Universe

The Inverse Universe completely reimagines the original color for something new.



C9E6E8



D6FCFF



C9D7E8



677273



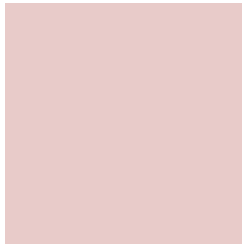
00A7B3



003033

Previews

White Background



This preview shows how the Hex color E8CBC9 looks on a white background.

Color Contrast Check

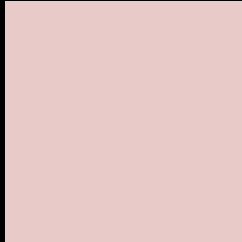
Large Text (above 18pt) WCAG AA × Fail

Any Text WCAG AA × Fail

Large Text (above 18pt) WCAG AAA × Fail

Any Text WCAG AAA × Fail

Black Background



This preview shows how the Hex color E8CBC9 looks on a black background.

Color Contrast Check

Large Text (above 18pt) WCAG AA ✓ Pass

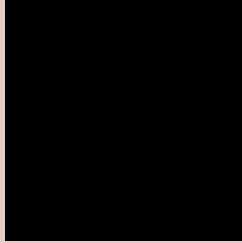
Any Text WCAG AA ✓ Pass

Large Text (above 18pt) WCAG AAA ✓ Pass

Any Text WCAG AAA ✓ Pass

If you want to check with other color combinations, try the [Color Contrast Checker](#).

Hex E8CBC9 Background



This preview shows how black text looks on a background with the Hex color E8CBC9.

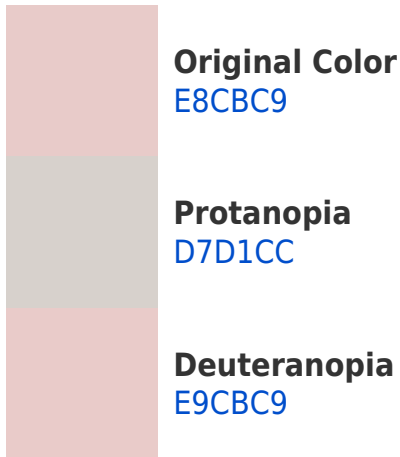


This preview shows how white text looks on a background with the Hex color E8CBC9.

Color Blindness Simulation

Color vision deficiency is a very complex topic, and I could not describe the different causes any better than Wikipedia does, so if you want to learn more, you should check out their [article about color blindness](#).

Dichromacy





Tritanopia
EAC9D8

Trichromacy



Original Color
E8CBC9

Protanomaly
DDCFB

Deuteranomaly
E9CBC9

Tritanomaly
E9CAD3

Monochromacy



Original Color
E8CBC9

Achromatopsia
D3D3D3

Achromatomaly
DBD0CF

CSS Examples

Text

The CSS property to change the color of the text to Hex E8CBC9 is called "color". The color property can be set on classes, ids or directly on the HTML element.

This example shows how text in the color #E8CBC9 looks like.

```
.text, #text, p{  
    color:#E8CBC9  
}
```

If you want to add a text shadow in that color use the text-shadow property, you can generate a text shadow directly with our [CSS Text Shadow Generator](#).

Here you see how black text with a 4 pixel #E8CBC9 colored shadow looks like.

```
.shadow{ text-shadow: 4px 4px 2px #E8CBC9
}
```

Border

The CSS property to change the border of an element to Hex E8CBC9 is called "border". The border property can be set on classes, ids or directly on the HTML element.

This example shows the color as border, it can be applied via the CSS property "border" or "border-color".

```
.border, #border, table{ border:4px solid
#E8CBC9 }
```

If only the border color should be changed use the property `border-color`.

```
.border{ border-color:#E8CBC9 }
```

If you want to add a box shadow in that color use:

Here you see how a box with a 4 pixel #E8CBC9 colored shadow looks like.

```
.boxshadow{ -moz-box-shadow:4px 4px 4px  
4px #E8CBC9; -webkit-box-shadow:4px 4px  
4px 4px #E8CBC9; box-shadow:4px 4px 4px  
4px #E8CBC9 }
```

Background

The CSS property to change the background color of an element to Hex E8CBC9 is called "background". The background property can be set on classes, ids or directly on the HTML element.

```
.background, #background, body{  
background:#E8CBC9 }
```

If only the background color should be changed can be used:

```
.background{ background-color:#E8CBC9 }
```

This example shows the color as background, it is applied via the CSS property "background".

To optimize and compress your CSS code, you can use our [online CSS compressor and optimizer](#) based on csstidy. If you want to create a linear or radial gradient as background or border, check our [CSS Gradient Generator](#).

Hey! You found this booklet interesting? Support Converting Colors with the new Membership Option!

The pro membership hides all ads, plus gives you double the colors in the color bucket, and more awesome pro features!

[Learn more, Memberships starting at \\$2.50/m!](#)

**Follow me
on Twitter!**

@ConvertingColor