

# Converting Colors

Hex(E8CBCB)

Have a look what the booklet for  
Hex(E8CBCB) contains.

|  |    |
|--|----|
| <b>Hex(E8CBCB)</b> .....                       | 3  |
| <i><b>Conversions</b></i> .....                | 4  |
| <i><b>Details</b></i> .....                    | 6  |
| <i><b>Harmonies</b></i> .....                  | 11 |
| <i><b>Previews</b></i> .....                   | 23 |
| <i><b>Color Blindness Simulation</b></i> ..... | 26 |
| <i><b>CSS Examples</b></i> .....               | 29 |

# **Color**

**Hex(E8CBCB)**

# Conversions

## Conversions Part 1

| Format      | Color                     |
|-------------|---------------------------|
| Hex         | E8CBCB                    |
| RGB         | 232, 203, 203             |
| RGB Percent | 91%, 80%, 80%             |
| CMY         | 0.0902, 0.2039, 0.2039    |
| CMYK        | 0.00, 0.13, 0.13, 0.09    |
| HSL         | 0°, 39%, 85%              |
| HSV         | 0°, 13%, 91%              |
| XYZ         | 65.4141, 64.1795, 65.4401 |
| YIQ         | 211.6710, 17.2840, 6.1480 |

# Conversions

## Conversions Part 2

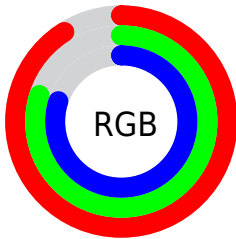
| Format                              | Color                         |
|-------------------------------------|-------------------------------|
| R <sub>Y</sub> B                    | 232, 203, 203                 |
| Decimal                             | 15256523                      |
| CIE Lab                             | 84.06, 10.16, 3.73            |
| CIE LCh                             | 84, 10.825, 20.181            |
| Yxy                                 | 64.1795, 0.3354,<br>0.3291    |
| Android<br>(android.graphics.Color) | 4293446603<br>(0xFFE8CBCB)    |
| YUV                                 | 211.6710, -4.2748,<br>17.8285 |
| Hunter-Lab                          | 80.1121, 5.5549,<br>7.6470    |

# Details

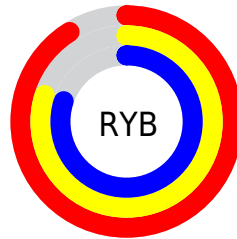
The Hex color **E8CBCB** is a light color, and the websafe version is hex **FFCCCC**. A complement of this color would be **CBE8E8**, and the grayscale version is **D4D4D4**.

A 20% lighter version of the original color is **FFFFFF**, and **B09595** is the 20% darker color. If you saturate the color by 10%, you get **E8B4B4**, and if you desaturate by 10%, it is **E8E2E2**.

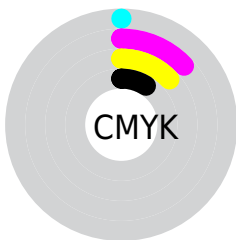
# Distribution



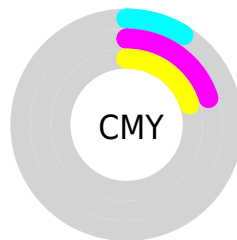
- Red (91%)
- Green (80%)
- Blue (80%)



- Red (91%)
- Yellow (80%)
- Blue (80%)



- Cyan (0%)
- Magenta (13%)
- Yellow (13%)
- Black (9%)



- Cyan (9%)
- Magenta (20%)
- Yellow (20%)

# Brightness & Saturation Gradients

These gradients show how the Hex color E8CBCB changes by changing the brightness by 10 percent. The first figure shows a shift by +10% for each color and the second figure -10%.

Similar to the brightness gradients but the following saturation gradients show a change of the Hex color E8CBCB by changing the saturation by 10% instead.



 E8CBCB

 E8CBCB

FFFFFF

 CCB0B0

 B09595

 957B7B

 7B6262

 624A4B

 4A3434

 331E1F

 1F0706

 000000

 E8CBCB

 E8CBCB

 E8B4B4

 E8E2E2

 E89D9D

 E8F9F9

 E88585

 E8FFFF

 E86E6E

 E85757

 E84040

 E82929

 E81111

 E80000

# Harmonies

## Analogous

The Analogous color harmony consists of three colors that are next to each other on the color wheel.



E5CBD5



E8CBCB



E5CDC2

# Triad

The Triadic color harmony groups three colors that are evenly spaced from another and form a triangle on the color wheel.



E8CBCB



C7D6C4



C3D4E5

# Complementary

The Complementary color scheme is a pair of colors which are on the opposite of each other on the color wheel.



E8CBCB



CBE8E8

# Split Complementary

Split-complementary colors differ from the complementary color scheme. The scheme consists of three colors, the original color and two neighbors of the complement color.



BBD6E1



E8CBCB



BDD8CE

# Square

The Square scheme is like the rectangle color scheme, but the four colors are evenly spaced on the color wheel.



E8CBCB



D3D3BE



B9D8D8



D0D0E5

# Rectangle

The Rectangle color scheme consists of four colors that form a rectangle on the color wheel.



E8CBCB



E1CFBF



B9D8D8



C0D5E4



# Sweetspot

The Sweet Spot groups the original color and five complimentary colors.



E8CBCB



FFF5F5



E8CBE8



807979



000000



808080



# Same Dimension

The Same Dimension uses a secret algorithm to generate beautiful new colors.



E8CBCB



FFD9D9



E8DACB



736767



B30000



330000



# Inverse Universe

The Inverse Universe completely reimagines the original color for something new.



CBE8E8



D9FFFF



CBD4E8



677373



00B3B3

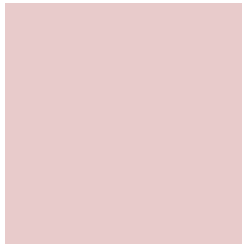


003333



# Previews

## White Background



This preview shows how the Hex color E8CBCB looks on a white background.

## Color Contrast Check

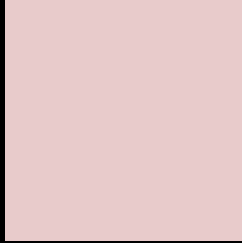
Large Text (above 18pt) WCAG AA × Fail

Any Text WCAG AA × Fail

Large Text (above 18pt) WCAG AAA × Fail

Any Text WCAG AAA × Fail

# Black Background



This preview shows how the Hex color E8CBCB looks on a black background.

## Color Contrast Check

Large Text (above 18pt) WCAG AA ✓ Pass

Any Text WCAG AA ✓ Pass

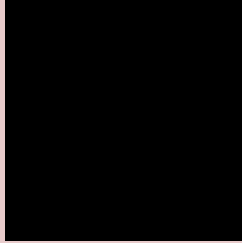
Large Text (above 18pt) WCAG AAA ✓ Pass

Any Text WCAG AAA ✓ Pass

If you want to check with other color combinations, try the [Color Contrast Checker](#).



## Hex E8CBCB Background



This preview shows how black text looks on a background with the Hex color E8CBCB.

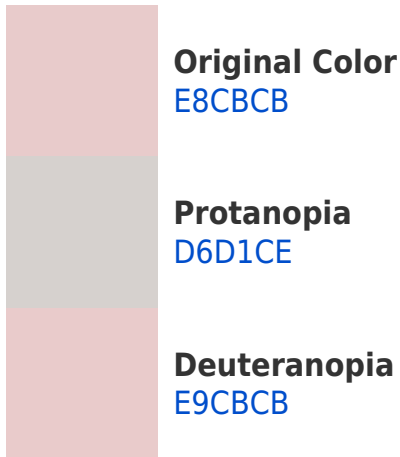


This preview shows how white text looks on a background with the Hex color E8CBCB.

# Color Blindness Simulation

Color vision deficiency is a very complex topic, and I could not describe the different causes any better than Wikipedia does, so if you want to learn more, you should check out their [article about color blindness](#).

## Dichromacy





**Tritanopia**  
EAC9D9

# Trichromacy



**Original Color**  
E8CBCB

**Protanomaly**  
DDCFCD

**Deuteranomaly**  
E9CBCB

**Tritanomaly**  
E9CAD4

# Monochromacy



**Original Color**  
E8CBCB

**Achromatopsia**  
D4D4D4

**Achromatomaly**  
DBD1D1

# CSS Examples

## Text

The CSS property to change the color of the text to Hex E8CBCB is called "color". The color property can be set on classes, ids or directly on the HTML element.

This example shows how text in the color #E8CBCB looks like.

```
.text, #text, p{  
    color:#E8CBCB  
}
```

If you want to add a text shadow in that color use the text-shadow property, you can generate a text shadow directly with our [CSS Text Shadow Generator](#).

Here you see how black text with a 4 pixel #E8CBCB colored shadow looks like.

```
.shadow{ text-shadow: 4px 4px 2px #E8CBCB
}
```

## Border

The CSS property to change the border of an element to Hex E8CBCB is called "border". The border property can be set on classes, ids or directly on the HTML element.

This example shows the color as border, it can be applied via the CSS property "border" or "border-color".

```
.border, #border, table{ border:4px solid
#E8CBCB }
```

If only the border color should be changed use the property `border-color`.

```
.border{ border-color:#E8CBCB }
```

If you want to add a box shadow in that color use:

Here you see how a box with a 4 pixel #E8CBCB colored shadow looks like.

```
.boxshadow{ -moz-box-shadow:4px 4px 4px  
4px #E8CBCB; -webkit-box-shadow:4px 4px  
4px 4px #E8CBCB; box-shadow:4px 4px 4px  
4px #E8CBCB }
```

# Background

The CSS property to change the background color of an element to Hex E8CBCB is called "background". The background property can be set on classes, ids or directly on the HTML element.

```
.background, #background, body{  
background:#E8CBCB }
```

If only the background color should be changed can be used:

```
.background{ background-color:#E8CBCB }
```

This example shows the color as background, it is applied via the CSS property "background".

To optimize and compress your CSS code, you can use our [online CSS compressor and optimizer](#) based on csstidy. If you want to create a linear or radial gradient as background or border, check our [CSS Gradient Generator](#).



Hey! You found this booklet interesting? Support Converting Colors with the new Membership Option!

The pro membership hides all ads, plus gives you double the colors in the color bucket, and more awesome pro features!

**[Learn more, Memberships starting at \\$2.50/m!](#)**

**Follow me  
on Twitter!**

@ConvertingColor