

Converting Colors

Hex(E8CCCC)

Have a look what the booklet for
Hex(E8CCCC) contains.

Hex(E8CCCC)	3
<i>Conversions</i>	4
<i>Details</i>	6
<i>Harmonies</i>	11
<i>Previews</i>	23
<i>Color Blindness Simulation</i>	26
<i>CSS Examples</i>	29

Color

Hex(E8CCCC)

Conversions

Conversions Part 1

Format	Color
Hex	E8CCCC
RGB	232, 204, 204
RGB Percent	91%, 80%, 80%
CMY	0.0902, 0.2000, 0.2000
CMYK	0.00, 0.12, 0.12, 0.09
HSL	0°, 38%, 85%
HSV	0°, 12%, 91%
XYZ	65.7707, 64.7012, 66.1488
YIQ	212.3720, 16.6880, 5.9360

Conversions

Conversions Part 2

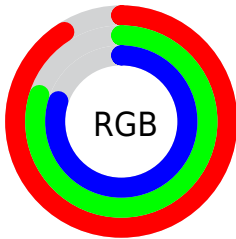
Format	Color
R _Y B	232, 204, 204
Decimal	15256780
CIE Lab	84.33, 9.80, 3.59
CIE LCh	84, 10.434, 20.145
Yxy	64.7012, 0.3345, 0.3291
Android (android.graphics.Color)	4293446860 (0xFFE8CCCC)
YUV	212.3720, -4.1274, 17.2138
Hunter-Lab	80.4370, 5.1886, 7.5477

Details

The Hex color **E8CCCC** is a light color, and the websafe version is hex **FFCCCC**. A complement of this color would be **CCE8E8**, and the grayscale version is **D4D4D4**.

A 20% lighter version of the original color is **FFFFFF**, and **B09696** is the 20% darker color. If you saturate the color by 10%, you get **E8B5B5**, and if you desaturate by 10%, it is **E8E3E3**.

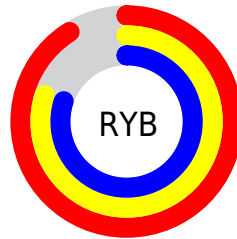
Distribution



Red (91%)

Green (80%)

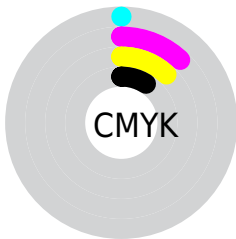
Blue (80%)



Red (91%)

Yellow (80%)

Blue (80%)

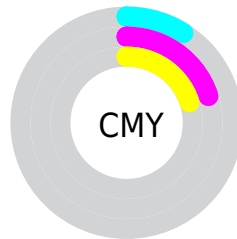


Cyan (0%)

Magenta (12%)

Yellow (12%)

Black (9%)



Cyan (9%)

Magenta (20%)

Yellow (20%)

Brightness & Saturation Gradients

These gradients show how the Hex color E8CCCC changes by changing the brightness by 10 percent. The first figure shows a shift by +10% for each color and the second figure -10%.

Similar to the brightness gradients but the following saturation gradients show a change of the Hex color E8CCCC by changing the saturation by 10% instead.

 E8CCCC

 E8CCCC

FFFFFF

 CCB1B1

 B09696

 957C7C

 7B6363

 624B4B

 4A3435

 331F20

 1F0807

 000000

 E8CCCC

 E8CCCC

 E8B5B5

 E8E3E3

 E89E9E

 E8FAFA

 E88686

 E8FFFF

 E86F6F

 E85858

 E84141

 E82A2A

 E81212

 E80000

Harmonies

Analogous

The Analogous color harmony consists of three colors that are next to each other on the color wheel.



E5CCD6



E8CCCC



E6CEC4

Triad

The Triadic color harmony groups three colors that are evenly spaced from another and form a triangle on the color wheel.



E8CCCC



C8D7C6



C5D4E5

Complementary

The Complementary color scheme is a pair of colors which are on the opposite of each other on the color wheel.



E8CCCC



CCE8E8

Split Complementary

Split-complementary colors differ from the complementary color scheme. The scheme consists of three colors, the original color and two neighbors of the complement color.



BCD7E1



E8CCCC



BFD8CF

Square

The Square scheme is like the rectangle color scheme, but the four colors are evenly spaced on the color wheel.



E8CCCC



D3D4C0



BAD8D9



D0D1E5

Rectangle

The Rectangle color scheme consists of four colors that form a rectangle on the color wheel.



E8CCCC



E1D0C0



BAD8D9



C1D5E5

Sweetspot

The Sweet Spot groups the original color and five complimentary colors.



E8CCCC



FFF5F5



E8CCE8



807979



000000



808080

Same Dimension

The Same Dimension uses a secret algorithm to generate beautiful new colors.



E8CCCC



FFDBDB



E8DACC



736767



B30000



330000

Inverse Universe

The Inverse Universe completely reimagines the original color for something new.



CCE8E8



DBFFFF



CCDAE8



677373



00B3B3



003333

Previews

White Background



This preview shows how the Hex color E8CCCC looks on a white background.

Color Contrast Check

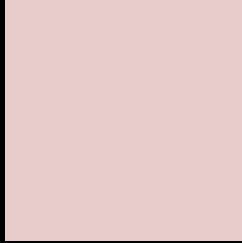
Large Text (above 18pt) WCAG AA × Fail

Any Text WCAG AA × Fail

Large Text (above 18pt) WCAG AAA × Fail

Any Text WCAG AAA × Fail

Black Background



This preview shows how the Hex color E8CCCC looks on a black background.

Color Contrast Check

Large Text (above 18pt) WCAG AA ✓ Pass

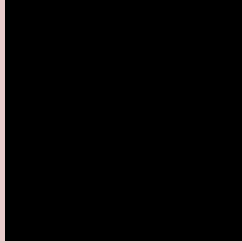
Any Text WCAG AA ✓ Pass

Large Text (above 18pt) WCAG AAA ✓ Pass

Any Text WCAG AAA ✓ Pass

If you want to check with other color combinations, try the [Color Contrast Checker](#).

Hex E8CCCC Background



This preview shows how black text looks on a background with the Hex color E8CCCC.

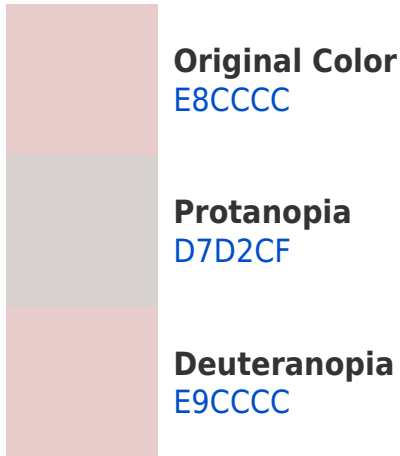


This preview shows how white text looks on a background with the Hex color E8CCCC.

Color Blindness Simulation

Color vision deficiency is a very complex topic, and I could not describe the different causes any better than Wikipedia does, so if you want to learn more, you should check out their [article about color blindness](#).

Dichromacy



Trichromacy



Original Color
E8CCCC

Protanomaly
DDD0CE

Deuteranomaly
E9CCCC

Tritanomaly
E9CBD5

Monochromacy



Original Color
E8CCCC

Achromatopsia
D4D4D4

Achromatomaly
DBD1D1

CSS Examples

Text

The CSS property to change the color of the text to Hex E8CCCC is called "color". The color property can be set on classes, ids or directly on the HTML element.

This example shows how text in the color #E8CCCC looks like.

```
.text, #text, p{  
    color:#E8CCCC  
}
```

If you want to add a text shadow in that color use the text-shadow property, you can generate a text shadow directly with our [CSS Text Shadow Generator](#).

Here you see how black text with a 4 pixel #E8CCCC colored shadow looks like.

```
.shadow{ text-shadow: 4px 4px 2px #E8CCCC
}
```

Border

The CSS property to change the border of an element to Hex E8CCCC is called "border". The border property can be set on classes, ids or directly on the HTML element.

This example shows the color as border, it can be applied via the CSS property "border" or "border-color".

```
.border, #border, table{ border:4px solid
#E8CCCC }
```

If only the border color should be changed use the property `border-color`.

```
.border{ border-color:#E8CCCC }
```

If you want to add a box shadow in that color use:

Here you see how a box with a 4 pixel #E8CCCC colored shadow looks like.

```
.boxshadow{ -moz-box-shadow:4px 4px 4px  
4px #E8CCCC; -webkit-box-shadow:4px 4px  
4px 4px #E8CCCC; box-shadow:4px 4px 4px  
4px #E8CCCC }
```

Background

The CSS property to change the background color of an element to Hex E8CCCC is called "background". The background property can be set on classes, ids or directly on the HTML element.

```
.background, #background, body{  
background:#E8CCCC }
```

If only the background color should be changed can be used:

```
.background{ background-color:#E8CCCC }
```

This example shows the color as background, it is applied via the CSS property "background".

To optimize and compress your CSS code, you can use our [online CSS compressor and optimizer](#) based on csstidy. If you want to create a linear or radial gradient as background or border, check our [CSS Gradient Generator](#).

Hey! You found this booklet interesting? Support Converting Colors with the new Membership Option!

The pro membership hides all ads, plus gives you double the colors in the color bucket, and more awesome pro features!

[Learn more, Memberships starting at \\$2.50/m!](#)

**Follow me
on Twitter!**

@ConvertingColor