

Converting Colors

Hex(E8CED1)

Have a look what the booklet for
Hex(E8CED1) contains.

Hex(E8CED1)	3
<i>Conversions</i>	4
<i>Details</i>	6
<i>Harmonies</i>	11
<i>Previews</i>	23
<i>Color Blindness Simulation</i>	26
<i>CSS Examples</i>	29

Color

Hex(E8CED1)

Conversions

Conversions Part 1

Format	Color
Hex	E8CED1
RGB	232, 206, 209
RGB Percent	91%, 81%, 82%
CMY	0.0902, 0.1922, 0.1804
CMYK	0.00, 0.11, 0.10, 0.09
HSL	353°, 36%, 86%
HSV	353°, 11%, 91%
XYZ	66.8586, 65.9019, 69.5181
YIQ	214.1160, 14.5330, 6.4450

Conversions

Conversions Part 2

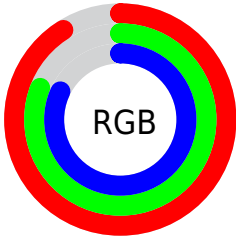
Format	Color
R _Y B	232, 206, 209
Decimal	15257297
CIE Lab	84.95, 9.56, 1.83
CIE LCh	85, 9.735, 10.826
Yxy	65.9019, 0.3305, 0.3258
Android (android.graphics.Color)	4293447377 (0xFFE8CED1)
YUV	214.1160, -2.5222, 15.6843
Hunter-Lab	81.1800, 4.9451, 6.0532

Details

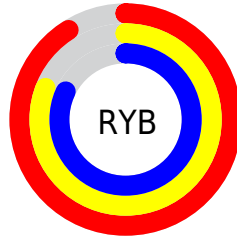
The Hex color **E8CED1** is a light color, and the websafe version is hex **FFCCCC**. A complement of this color would be **CEE8E5**, and the grayscale version is **D6D6D6**.

A 20% lighter version of the original color is **FFFFFF**, and **B0989B** is the 20% darker color. If you saturate the color by 10%, you get **E8B7BC**, and if you desaturate by 10%, it is **E8E5E6**.

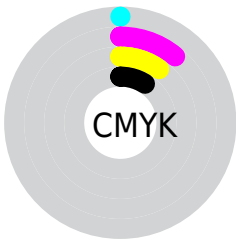
Distribution



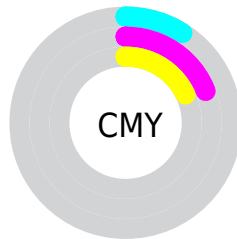
- Red (91%)
- Green (81%)
- Blue (82%)



- Red (91%)
- Yellow (81%)
- Blue (82%)



- Cyan (0%)
- Magenta (11%)
- Yellow (10%)
- Black (9%)



- Cyan (9%)
- Magenta (19%)
- Yellow (18%)

Brightness & Saturation Gradients

These gradients show how the Hex color E8CED1 changes by changing the brightness by 10 percent. The first figure shows a shift by +10% for each color and the second figure -10%.

Similar to the brightness gradients but the following saturation gradients show a change of the Hex color E8CED1 by changing the saturation by 10% instead.

 E8CED1

FFFFFF

 E8CED1

 CCB2B5

 B0989B

 957E81

 7B6568

 624D50

 4A3639

 332123

 1F0A0E

 000000

 E8CED1

 E8CED1

 E8B7BC

 E8E5E6

 E8A0A8

 E8FCFA

 E88893

 E8FFFF

 E8717F

 E85A6A

 E84356

 E82C41

 E8142D

 E8001B

Harmonies

Analogous

The Analogous color harmony consists of three colors that are next to each other on the color wheel.



E3CFDA



E8CED1



E7CFC8

Triad

The Triadic color harmony groups three colors that are evenly spaced from another and form a triangle on the color wheel.



E8CED1



CED7C6



C4D7E5

Complementary

The Complementary color scheme is a pair of colors which are on the opposite of each other on the color wheel.



E8CED1



CEE8E5

Split Complementary

Split-complementary colors differ from the complementary color scheme. The scheme consists of three colors, the original color and two neighbors of the complement color.



BED9E0



E8CED1



C4D9CE

Square

The Square scheme is like the rectangle color scheme, but the four colors are evenly spaced on the color wheel.



E8CED1



D8D5C2



BEDAD7



CFD4E6

Rectangle

The Rectangle color scheme consists of four colors that form a rectangle on the color wheel.



E8CED1



E4D1C4



BEDAD7



C2D8E4

Sweetspot

The Sweet Spot groups the original color and five complimentary colors.



E8CED1



FFF7F8



E5CEE8



807A7B



000000



808080

Same Dimension

The Same Dimension uses a secret algorithm to generate beautiful new colors.



E8CED1



FFDEE2



E8D8CE



736769



B30015



330006

Inverse Universe

The Inverse Universe completely reimagines the original color for something new.



E8CED1



FFDEE2



CEDEE8



736769



B30015



330006

Previews

White Background



This preview shows how the Hex color E8CED1 looks on a white background.

Color Contrast Check

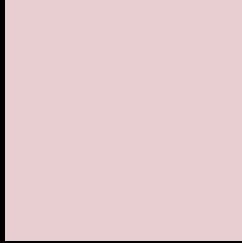
Large Text (above 18pt) WCAG AA × Fail

Any Text WCAG AA × Fail

Large Text (above 18pt) WCAG AAA × Fail

Any Text WCAG AAA × Fail

Black Background



This preview shows how the Hex color E8CED1 looks on a black background.

Color Contrast Check

Large Text (above 18pt) WCAG AA ✓ Pass

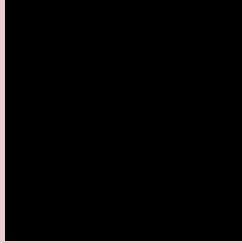
Any Text WCAG AA ✓ Pass

Large Text (above 18pt) WCAG AAA ✓ Pass

Any Text WCAG AAA ✓ Pass

If you want to check with other color combinations, try the [Color Contrast Checker](#).

Hex E8CED1 Background



This preview shows how black text looks on a background with the Hex color E8CED1.

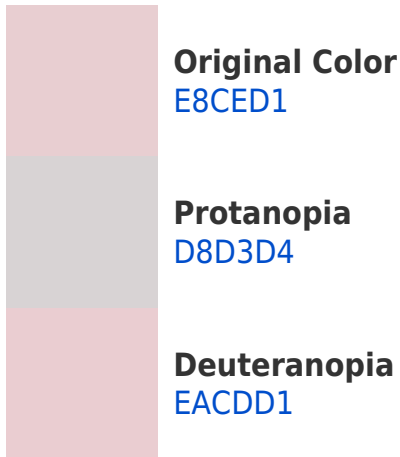


This preview shows how white text looks on a background with the Hex color E8CED1.

Color Blindness Simulation

Color vision deficiency is a very complex topic, and I could not describe the different causes any better than Wikipedia does, so if you want to learn more, you should check out their [article about color blindness](#).

Dichromacy



Trichromacy



Original Color
E8CED1

Protanomaly
DED1D3

Deuteranomaly
E9CDD1

Tritanomaly
E9CDD8

Monochromacy



Original Color
E8CED1

Achromatopsia
D6D6D6

Achromatomaly
DDD3D4

CSS Examples

Text

The CSS property to change the color of the text to Hex E8CED1 is called "color". The color property can be set on classes, ids or directly on the HTML element.

This example shows how text in the color #E8CED1 looks like.

```
.text, #text, p{  
    color:#E8CED1  
}
```

If you want to add a text shadow in that color use the text-shadow property, you can generate a text shadow directly with our [CSS Text Shadow Generator](#).

Here you see how black text with a 4 pixel #E8CED1 colored shadow looks like.

```
.shadow{ text-shadow: 4px 4px 2px #E8CED1  
}
```

Border

The CSS property to change the border of an element to Hex E8CED1 is called "border". The border property can be set on classes, ids or directly on the HTML element.

This example shows the color as border, it can be applied via the CSS property "border" or "border-color".

```
.border, #border, table{ border:4px solid  
#E8CED1 }
```

If only the border color should be changed use the property `border-color`.

```
.border{ border-color:#E8CED1 }
```

If you want to add a box shadow in that color use:

Here you see how a box with a 4 pixel #E8CED1 colored shadow looks like.

```
.boxshadow{ -moz-box-shadow:4px 4px 4px  
4px #E8CED1; -webkit-box-shadow:4px 4px  
4px 4px #E8CED1; box-shadow:4px 4px 4px  
4px #E8CED1 }
```

Background

The CSS property to change the background color of an element to Hex E8CED1 is called "background". The background property can be set on classes, ids or directly on the HTML element.

```
.background, #background, body{  
background:#E8CED1 }
```

If only the background color should be changed can be used:

```
.background{ background-color:#E8CED1 }
```

This example shows the color as background, it is applied via the CSS property "background".

To optimize and compress your CSS code, you can use our [online CSS compressor and optimizer](#) based on csstidy. If you want to create a linear or radial gradient as background or border, check our [CSS Gradient Generator](#).

Hey! You found this booklet interesting? Support Converting Colors with the new Membership Option!

The pro membership hides all ads, plus gives you double the colors in the color bucket, and more awesome pro features!

[Learn more, Memberships starting at \\$2.50/m!](#)

**Follow me
on Twitter!**

@ConvertingColor